

Cool Fixes for Hot Cities

Part 2: Los Angeles

September 12, 2018

Hosted by:

U.S. EPA Heat Island Reduction Program





Webcast Agenda

- **Introduction**
 - Victoria Ludwig, U.S. EPA Heat Island Reduction Program
- **Overview of Cool Pavements for Heat Island Reduction**
 - Kurt Shickman, Global Cool Cities Alliance
- **Los Angeles' Cool Pavements Pilot Project**
 - Greg Spotts, Los Angeles Bureau of Street Services
- **Los Angeles' Cool Roof Ordinance and Free Tree Program**
 - Craig Tranby, Los Angeles Department of Water & Power
- **Question and Answer Session**



Webcasts now use Adobe Connect

Troubleshooting Tips

- Try a different web browser (e.g., Firefox, Chrome)
- Download the latest version of Adobe Flash Player or the Adobe Connect Plug-in
- Check with your Information Technology (IT) department about your internet security settings
- Find help [online](#)





How to Participate



Audio

■ Computer

- Audio will begin when the Host signs on
- Tip! Unmute your speakers or headphones



■ Phone

- Call in to 1-855-210-5748
- Tip! Mute your computer speakers to avoid audio feedback

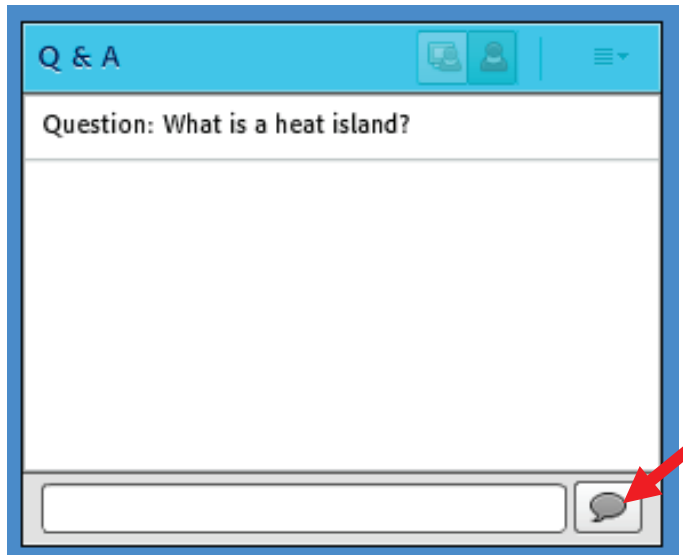


■ Participants are muted

How to Participate

Question and Answer

- Enter your question in the Q&A box
- Questions will be moderated at the end
- EPA will post responses to unanswered questions on the [Heat Islands webpage](#)

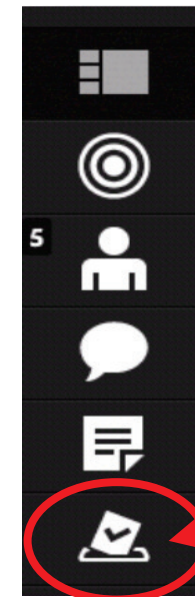
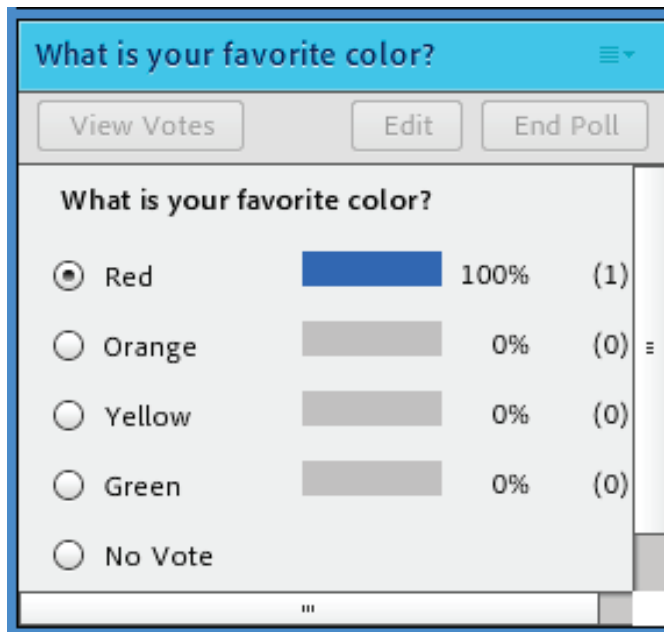


The screenshot shows a web interface for a Q&A section. At the top, there is a blue header with the text "Q & A" and icons for a computer, a person, and a menu. Below the header, the question "Question: What is a heat island?" is displayed. Underneath the question is a large white text input area. At the bottom of the input area, there is a text input field and a speech bubble icon, which is highlighted by a red arrow pointing to it.

How to Participate

Polling

- We'll ask several poll questions during the webcast
- On mobile devices or tablets
 - Exit full screen mode
 - Tap on the Poll icon



Introduction

Victoria Ludwig
U.S. EPA Heat Island Reduction Program



EPA's Heat Island Reduction Program

■ Mission

Outreach and technical assistance program working with local officials, researchers, non-profits, and industry to identify opportunities to implement effective heat island reduction programs and policies.

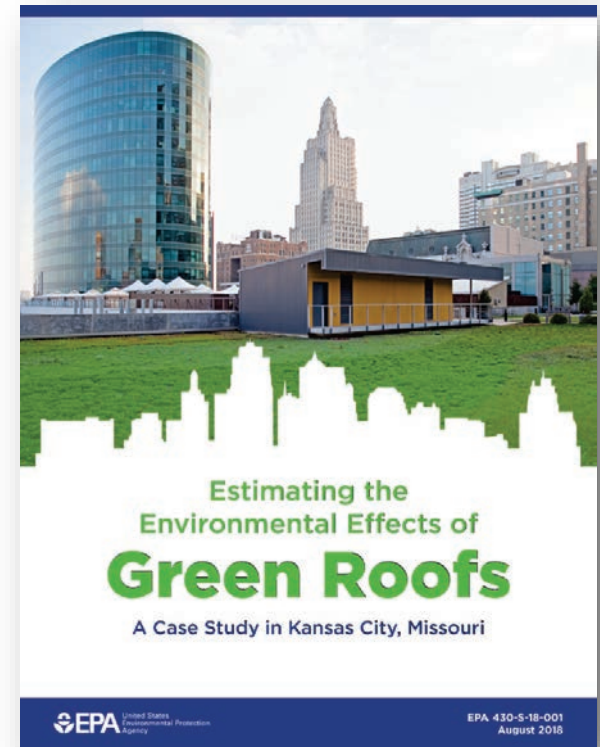
■ Program Audiences

- Local and state policymakers and program implementers
- Academia/researchers
- Other federal agencies
- Non-profit organizations
- Industry



Newly Sprouted Green Roofs Page!

- [Using Green Roofs to Reduce Heat Islands](#)
- [Estimating the Environmental Effects of Green Roofs, A Case Study in Kansas City, Missouri](#)
- New photo gallery and graphics
- Refreshed content



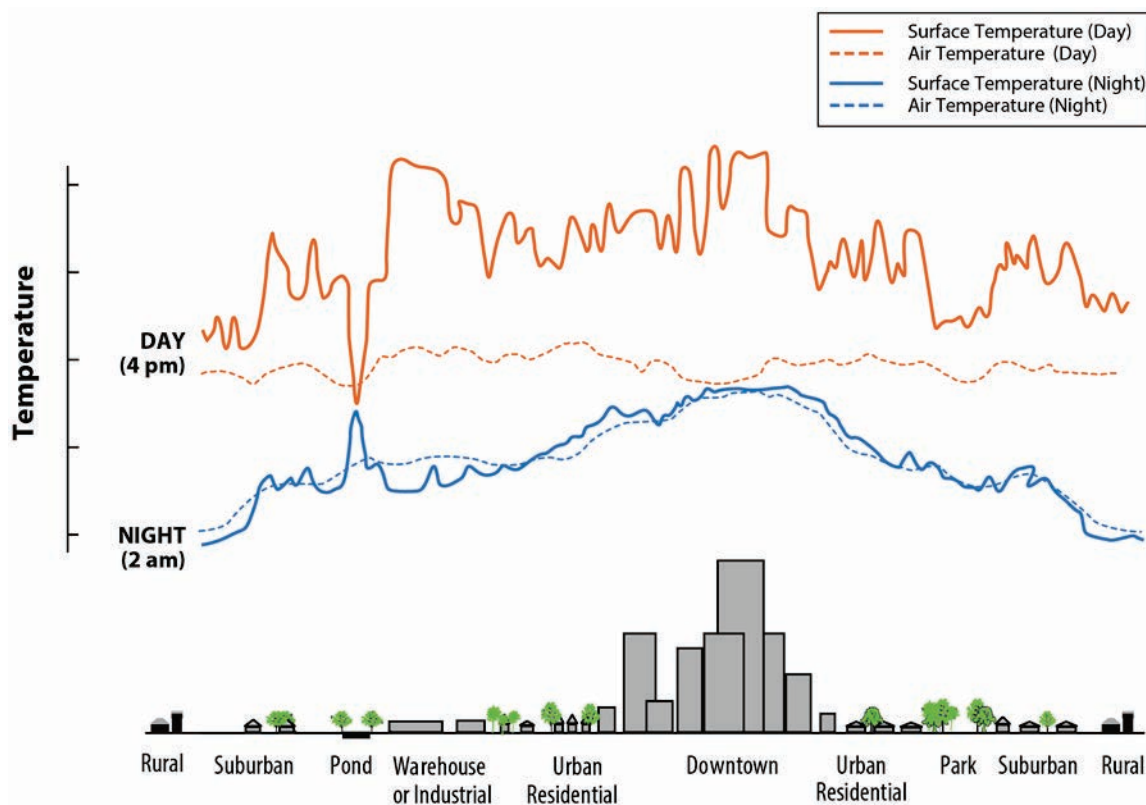
Heat Island Program Resources

- **[Compendium of Strategies: Reducing Urban Heat Islands:](#)** Heat island science, detailed info on mitigation strategies, local examples, policy options
- **[Website:](#)** Basic information on heat island topics, calendar of events, newsroom, links to other resources
 - NEW: [Using Green Roofs to Reduce Heat Islands](#)
- **[Examples:](#)** Database of more than 75 local and statewide initiatives to reduce heat islands
- **[Webcasts:](#)** Topics include case studies, public health connections, advances in mitigation policy
 - NEW: [Materials from Cool Fixes for Hot Cities Part 1: San Antonio](#)
- **[Newsletter:](#)** Recent news on projects and policies, research, funding opportunities



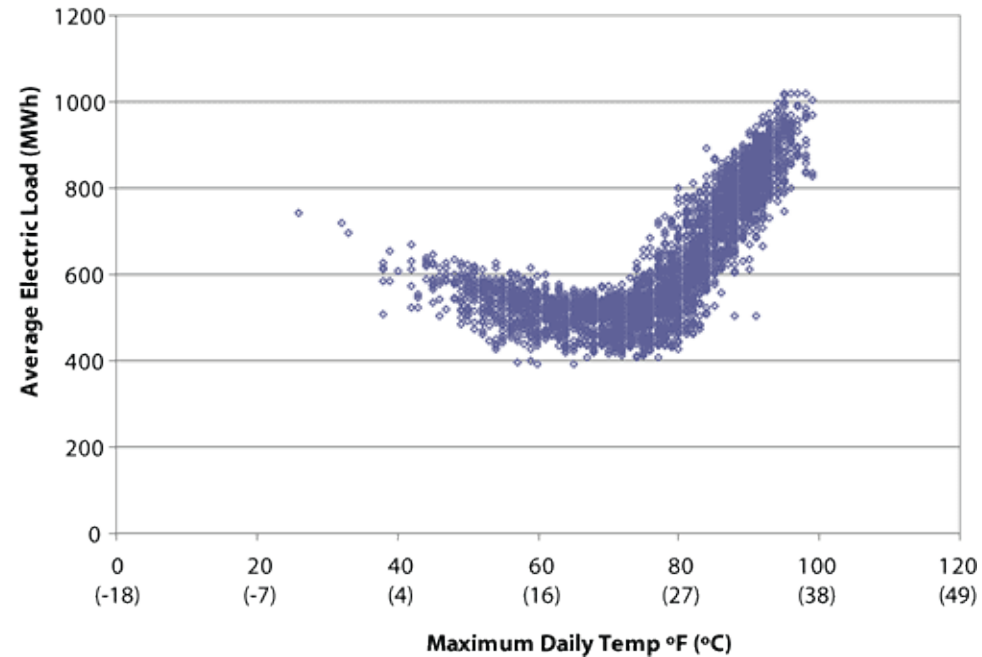
What is the Heat Island Effect?

- Micro-scale temperature differences between urban and rural areas
- Urban areas can be 0.9 °– 7.2 ° F higher than rural areas in the daytime, and 1.8 °– 4.5 ° F higher at nighttime



Heat Island Impacts

- Higher energy consumption and emissions
- Lower air quality
- Higher risks to public health
- Impaired water quality
- Quality of life





Contact Information

[Victoria Ludwig](#)

U.S. Environmental Protection Agency

202-343-9291



[Website](#)



[EPA Heat Island Newsletter Sign-Up](#)





Connect with the Heat Island Program

[Victoria Ludwig](#)

U.S. Environmental Protection Agency

202-343-9291



[Webcast Feedback Form](#)



[Heat Island Program Website](#)



[EPA Heat Island Newsletter Sign-Up](#)

