



NR-COGEN-CM  
Construction Management Services for North River  
Cogeneration and Electrification  
AECOM  
125 Broad St., 16<sup>th</sup> Floor  
New York, NY 10004  
T 212.377.8693

August 10, 2018

Via email to: Timothy P. Burns, P.E.  
NYS AIS Coordinator  
[CWSRFinfo@efc.ny.gov](mailto:CWSRFinfo@efc.ny.gov)

NYS Environmental Facilities Corporation

Subject: AIS Availability Waiver Request (10" and 12" Globe Valves)  
New York City Department of Environmental Protection  
North River WWTP, WP-164  
Contract NR-38, Cogeneration and Electrification  
Registration No. 20171426056  
SRF Project No. C2-5234-28-00

Attachments:

- Letter from Yonkers Contracting Company, Inc. dated May 1, 2018
- Detailed Specifications 15111G
- Contract Drawings G00-6029, G00-6030, M22-1001 and M22-100
- RFI 15
- Correspondence from vendors re: valve AIS compliance
- Excerpts from Project Schedule update #5

Dear Mr. Burns:

Under contract with New York City Department of Environmental Protection (NYCDEP), AECOM provides construction management services for the NYCDEP for the Cogeneration and Electrification program at the North River Wastewater Treatment Plant. I am the Resident Engineer overseeing the performance of work under Construction Contract NR-38.

Under this Contract NR-38 with NYC DEP, Yonkers Contracting Company, Inc. (YCC) is required to furnish and install One (1) -10" Manual Globe Valve and One (1) -12" Manual Globe Valve for water service of the cogeneration engine exhaust heat recovery and cooling heat rejection systems in accordance with the Contract detailed specification 15111G "Valves – 4 inches and Larger" and as shown in the Contract Drawings G00-6029, G00-6030, M22-1001 and M22-1004.

The Contract includes the New York State Environmental Facilities Corporation contract packet with the American Iron and Steel (AIS) Requirement for this CWSRF project, which include valves. The AIS requirements section also allows for the submission of a waiver request if:

"Iron and steel products are not produced in the US in sufficient and reasonably available quantities and of a satisfactory quality;"

The following information is provided to the EFC in requesting AIS Waiver for the following item:



NR-COGEN-CM  
Construction Management Services for North River  
Cogeneration and Electrification  
AECOM  
125 Broad St., 16<sup>th</sup> Floor  
New York, NY 10004  
T 212.377.8693

- **One (1) -10” Manual Globe Valve**
- **One (1) -12” Manual Globe Valve**

The Project Team evaluated the six vendors for the globes valves listed in the contract specifications as well as three additional vendors (per the attached RFI 15) and determined these valves are currently only manufactured by Valvitalia, Mascot, Powell Valves or William Valve Corporation. These vendors have indicated they can not provide AIS compliant valves that meet the design requirements (see attached contractor/vendor correspondence). For reference, also attached are the valve specifications and drawings supplemented by the related RFI 15. The approximate cost of these valves is \$22,000.

Per the Project Schedule (update #5), the delivery of these valves is to occur on July 20, 2018 with the estimated fabrication time of approximately 16 weeks. The available float cannot fully offset the current delay to the schedule. As such, it is important to issue these valves for fabrication as soon as possible, so as not to delay the schedule further.

We request the waiver be considered and granted.

Please review and advise if you have any questions or comments, or submit this request to EPA for request of the waiver.

Sincerely,

Peter Marzziotti, P.E.  
Resident Engineer  
AECOM

C: James Lauria, P.E., BEDC  
Frank Giardina, BEDC  
Domenick Loschiavo, P.E., Black & Veatch  
Timothy Loewen, BEDC



May 15, 2018  
No. NR-38-AECOM-009

Peter Marzziotti, P.E.  
AECOM Power and Industrial  
125 Broad St.  
New York, NY 10004

Re: New York City Department of Environmental Protection (NYC DEP)  
WP-164, North River WWTP Cogeneration and Electrification  
Contract NR-38  
Manual Globe Valves - AIS Waiver Request

Dear Mr. Peter Marzziotti,

Due to the specific project requirements, Yonkers Contracting Company, Inc. (YCC) the General Contractor for the NYC DEP Contract NR-38 - North River Wastewater Treatment Plant Cogeneration and Electrification is formally requesting an AIS Waiver for the following item:

- (1) – 10” Manual Globe Valve
- (1) – 12” Manual Globe Valve

Detailed Specification Section 15111G “Valves – 4 Inch and Larger” Paragraph 2.01, Z lists the following acceptable manufacturers:

1. American R/D
2. Mueller Water Co.
3. Amot
4. Valvitalia
5. Nor’East
6. Dezurik

Only one of the listed manufacturers(Valvitalia) can provide the specified valves, and they are not AIS compliant. Yonkers inquired whether an alternate valve would be considered, but due to the project specific requirements the designer has indicated that the specified globe valves must be used.

In addition to the Manufacturers indicated, Yonkers has investigated Mascot, Powell and Williams Valve as suggested by the designer in RFI-015, and none can provide 10” & 12” AIS compliant globe valves as per the specification.

The estimated cost of these valves is approximately [redacted].

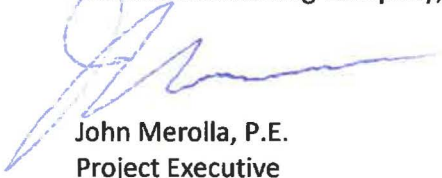


---

The current schedule shows delivery of these valves to occur July 17, 2018. The valves have been approved by the designer since February 16, 2018. The estimated fabrication for the valves is approximately 16 weeks. This activity is currently being delayed. Please expedite review of this waiver request.

Should you have any questions, please contact me at (646) 374-0133 Ext. 201 or at [jmerolla@yonkerscontractingco.com](mailto:jmerolla@yonkerscontractingco.com).

Sincerely,  
Yonkers Contracting Company, Inc.



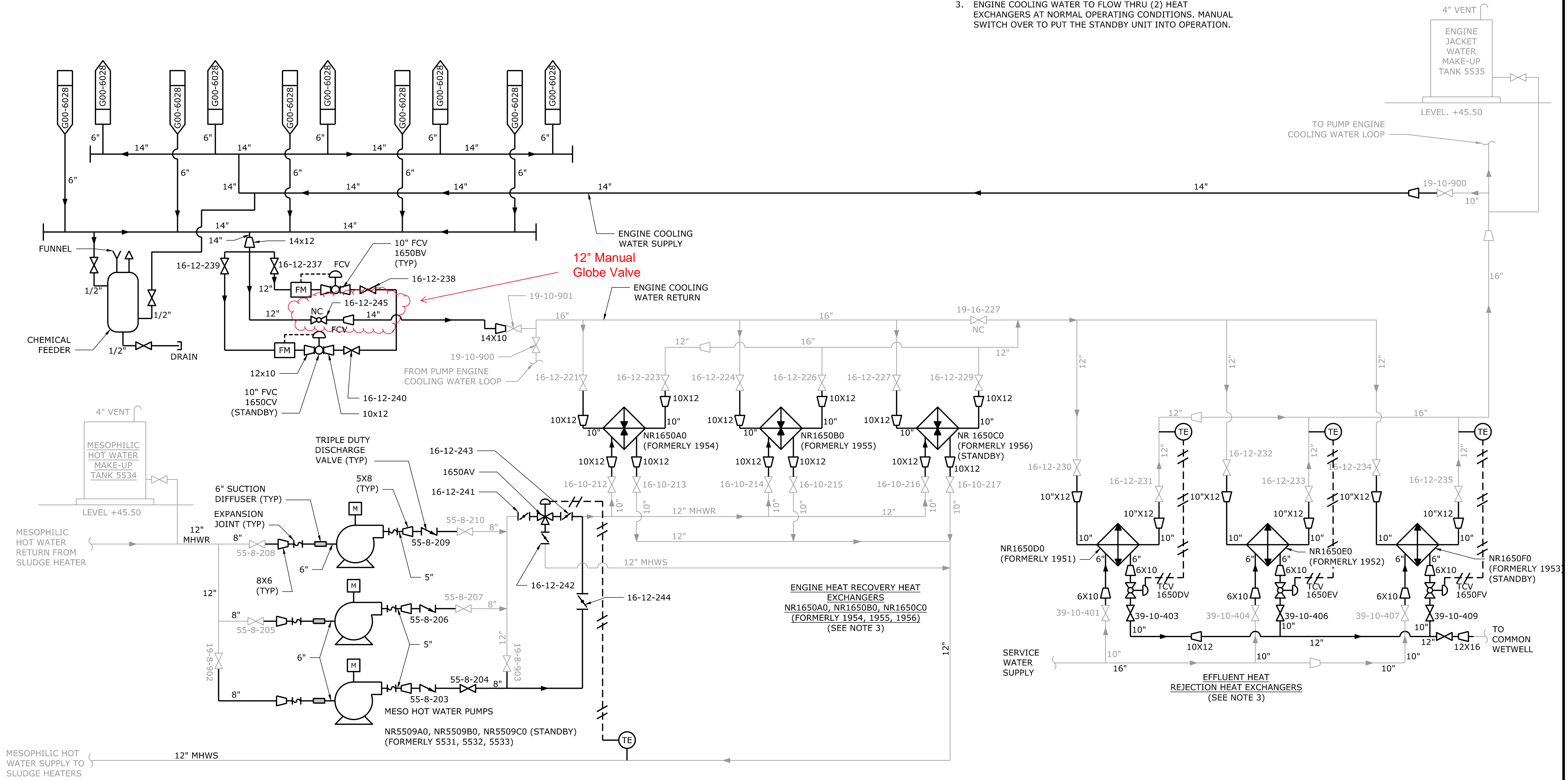
John Merolla, P.E.  
Project Executive





**NOTES:**

- FOR LEGENDS, SEE SHEET G00-6001.
- ALL EQUIPMENT TAG NUMBERS SHALL HAVE THE PREFIX "NR" (NORTH RIVER) INCLUDED ON ANY DOCUMENTATION OR SUBMITTAL INFORMATION.
- ENGINE COOLING WATER TO FLOW THRU (2) HEAT EXCHANGERS AT NORMAL OPERATING CONDITIONS. MANUAL SWITCH OVER TO PUT THE STANDBY UNIT INTO OPERATION.



MAIN BUILDING LEVEL +5.00

GRAPHIC SCALES  
CHECK BEFORE USE

IF SHEET IS LESS THAN 22" X 34"  
IT IS A REDUCED PRINT.  
SCALE ACCORDINGLY

FD177129 BORDER  
 Last Save By Date and Time: mgodby\4/11/2017 9:09 AM\Plotstyle Table: dep-bedc - 11x17 reduced drawings.ctb  
 Date Plotted: 4/13/2017 9:25 AM\Author: mgodby\Location: c:\pw\_working\cngpw\0923373\g00-6029.dwg

NO.	DATE	DESCRIPTION	APPR'D.
1	4/14/17	CONFORMED	
0	8/26/16	ISSUED FOR BID	SM
REVISIONS			

DESIGNED BY:  
KS  
CHECKED BY:  
EC  
DESIGN LEAD:  
SM  
SECTION CHIEF:

DRAWN BY:  
JC  
**BLACK & VEATCH**  
Building a world of difference  
Black & Veatch New York LLP  
400 Fifth Avenue, New York, New York 10017  
**NYC**  
SINCE 1898  
SINCE 1898  
SINCE 1898

THIS DRAWING WAS  
ORIGINALLY SEALED BY  
STEVEN A. MARTINO  
08/26/16 A LICENSED  
PROFESSIONAL ENGINEER IN  
THE STATE OF NEW YORK,  
NO. 083631



ACCOUNTABLE MANAGER  
FRANK GIARDINA  
PORTFOLIO MANAGER  
JAMES LAURIA  
ASST. COMMISSIONER  
KENNETH MORIARTY

"WARNING—IT IS A VIOLATION, OF THE NEW YORK STATE  
EDUCATION LAW, SECTION, 7209.2, FOR ANY PERSON,  
UNLESS (S)HE IS ACTING UNDER THE DIRECTION OF A  
LICENSED PROFESSIONAL ENGINEER, TO ALTER THIS  
DOCUMENT IN ANY WAY. IF ALTERED, THE ALTERING PERSON  
SHALL COMPLY WITH THE REQUIREMENTS OF NEW YORK  
EDUCATION, LAW, SECTION, 7209.2."

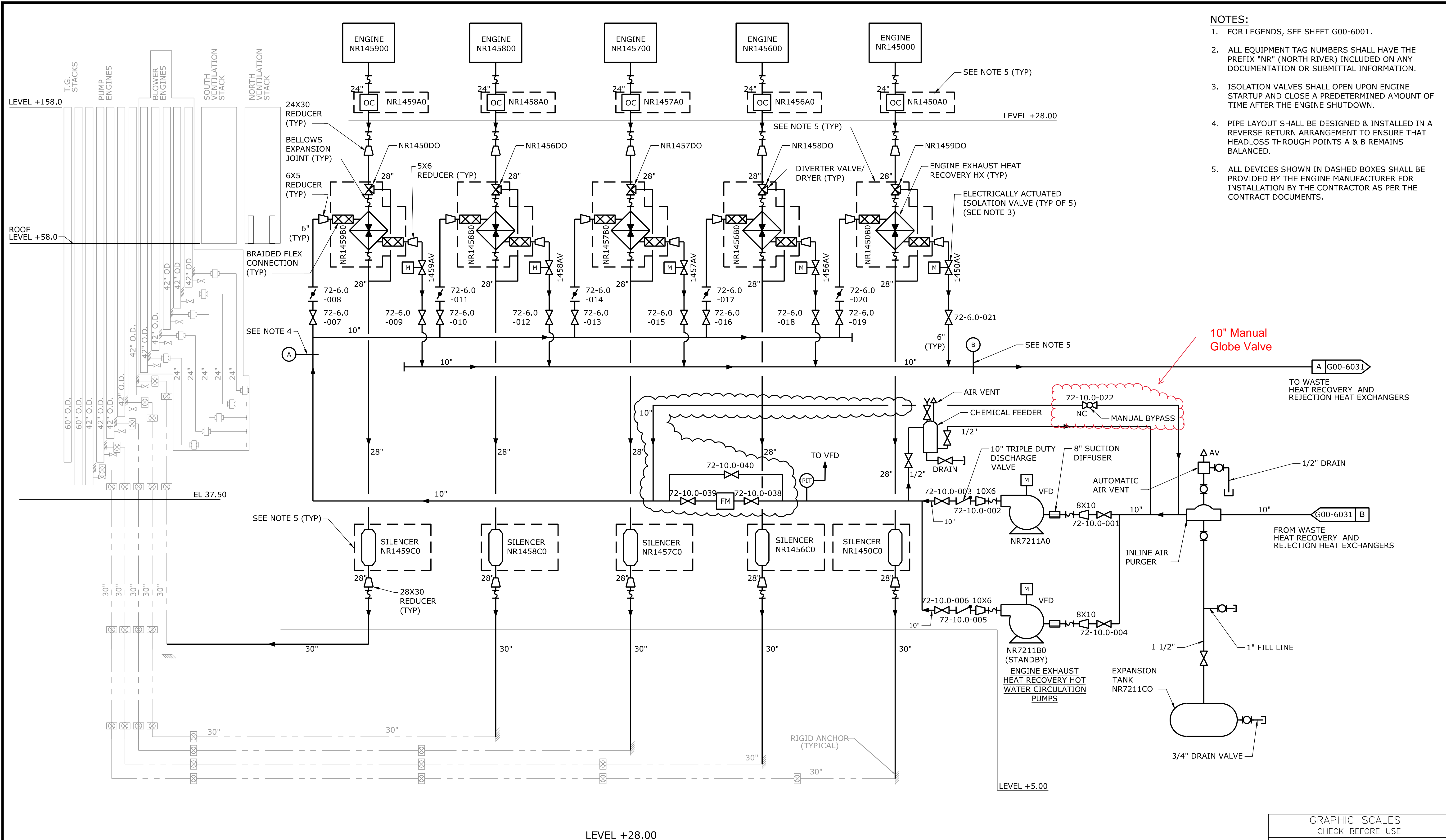
**NEW YORK CITY**  
**ENVIRONMENTAL PROTECTION**  
BUREAU OF ENGINEERING DESIGN & CONSTRUCTION

**NORTH RIVER WWTP**  
**COGENERATION & ELECTRIFICATION**  
CONTRACT NR-38  
PROCESS FLOW DIAGRAM  
ENGINE COOLING HEAT RECOVERY  
AND REJECTION

DATE: 8/26/16  
SCALE:  
SHEET NO:  
36 OF 1176  
DRAWING NO.  
G00-6029

**NOTES:**

- FOR LEGENDS, SEE SHEET G00-6001.
- ALL EQUIPMENT TAG NUMBERS SHALL HAVE THE PREFIX "NR" (NORTH RIVER) INCLUDED ON ANY DOCUMENTATION OR SUBMITTAL INFORMATION.
- ISOLATION VALVES SHALL OPEN UPON ENGINE STARTUP AND CLOSE A PREDETERMINED AMOUNT OF TIME AFTER THE ENGINE SHUTDOWN.
- PIPE LAYOUT SHALL BE DESIGNED & INSTALLED IN A REVERSE RETURN ARRANGEMENT TO ENSURE THAT HEADLOSS THROUGH POINTS A & B REMAINS BALANCED.
- ALL DEVICES SHOWN IN DASHED BOXES SHALL BE PROVIDED BY THE ENGINE MANUFACTURER FOR INSTALLATION BY THE CONTRACTOR AS PER THE CONTRACT DOCUMENTS.



10" Manual  
Globe Valve

A G00-6031

TO WASTE  
HEAT RECOVERY AND  
REJECTION HEAT EXCHANGERS

1/2" DRAIN

FROM WASTE  
HEAT RECOVERY AND  
REJECTION HEAT EXCHANGERS

1" FILL LINE

3/4" DRAIN VALVE

GRAPHIC SCALES  
CHECK BEFORE USE

IF SHEET IS LESS THAN 22" X 34"  
IT IS A REDUCED PRINT.  
SCALE ACCORDINGLY

NO.	DATE	DESCRIPTION	APPR'D.
1	11/13/17	PER RFI-035	
1	4/14/17	CONFORMED	
0	8/26/16	ISSUED FOR BID	SM
REVISIONS			

DESIGNED BY:  
KS  
CHECKED BY:  
EC  
DESIGN LEAD:  
SM  
SECTION CHIEF:

DRAWN BY:  
JC  
**BLACK & VEATCH**  
Building a world of difference  
Black & Veatch New York LLP  
400 Park Avenue New York, New York 10022  
**NYC**  
Environmental Protection  
ASST. ENGINEER P.C.  
3 SCARLE DRIVE  
PLANNINGVILLE, NY 10970

THIS DRAWING WAS  
ORIGINALLY SEALED BY  
STEVEN A. MARTINO  
08/26/16 A LICENSED  
PROFESSIONAL ENGINEER IN  
THE STATE OF NEW YORK,  
NO. 083631



ACCOUNTABLE MANAGER  
FRANK GIARDINA  
PORTFOLIO MANAGER  
JAMES LAURIA  
ASST. COMMISSIONER  
KENNETH MORIARTY

"WARNING—IT IS A VIOLATION, OF THE NEW YORK STATE  
EDUCATION LAW, SECTION, 7209.2, FOR ANY PERSON,  
UNLESS (S)HE IS ACTING UNDER THE DIRECTION OF A  
LICENSED PROFESSIONAL ENGINEER, TO ALTER THIS  
DOCUMENT IN ANY WAY. IF ALTERED, THE ALTERING PERSON  
SHALL COMPLY WITH THE REQUIREMENTS OF NEW YORK  
EDUCATION, LAW, SECTION, 7209.2."

**NEW YORK CITY  
ENVIRONMENTAL PROTECTION  
BUREAU OF ENGINEERING DESIGN & CONSTRUCTION**

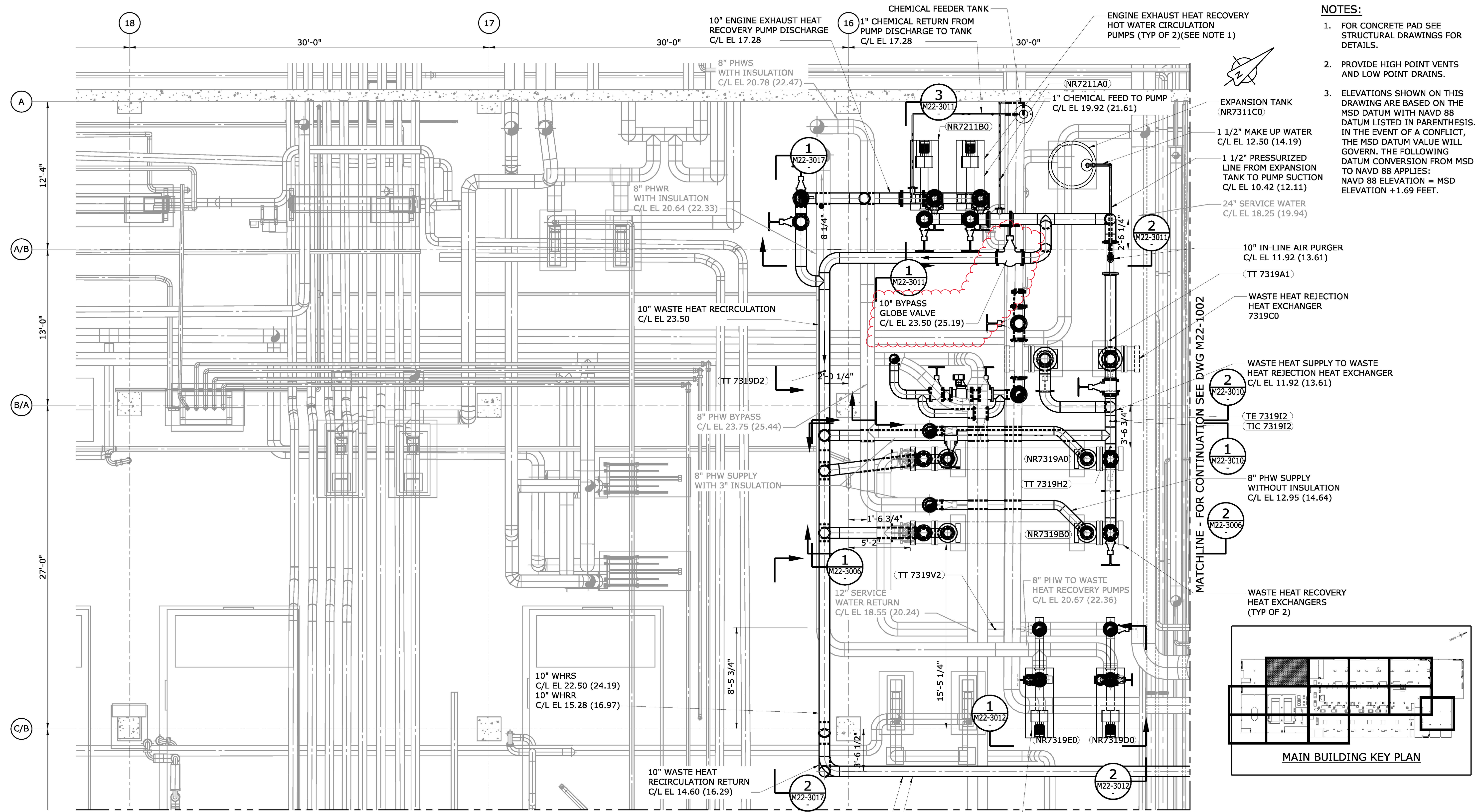
**NORTH RIVER WWTP  
COGENERATION & ELECTRIFICATION**  
CONTRACT NR-38  
**PROCESS FLOW DIAGRAM  
ENGINE EXHAUST HEAT RECOVERY  
AND REJECTION**

DATE: 8/26/16  
SCALE: NONE  
SHEET NO:  
37 OF 1176  
DRAWING NO.  
G00-6030

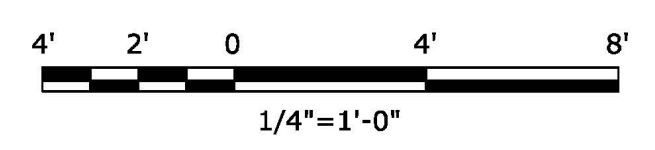
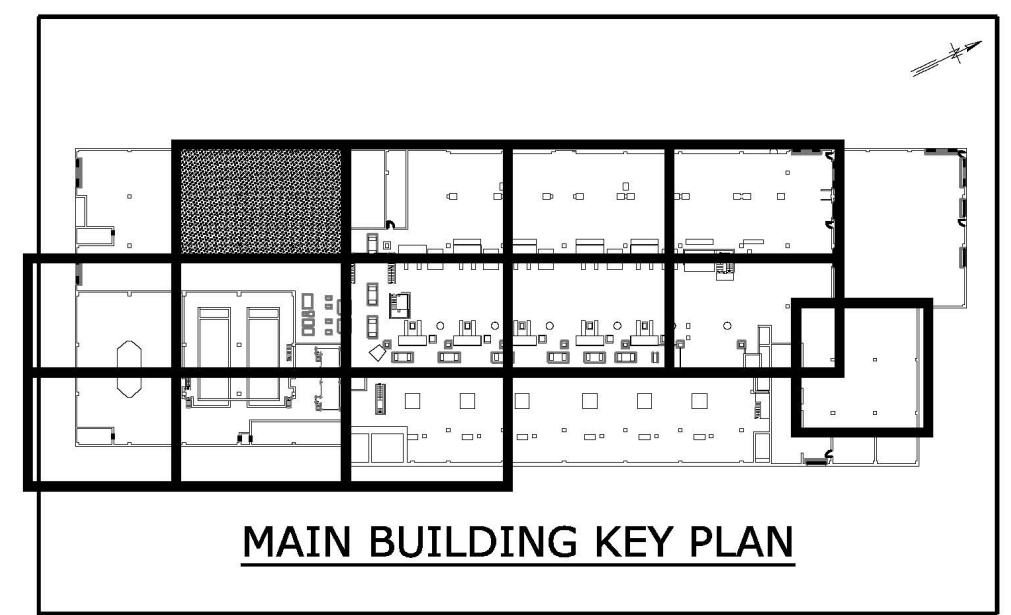
FD177129 BORDER  
Last Save By Date and Time: mgodby\11/13/2017 10:04 AM\Plotstyle Table: dep-bedc - 11x17 reduced drawings.ctb  
Date Plotted: 11/13/2017 10:50 AM\Author: mgodby\Location: g:\savin\autocad\2103dep\09nr\cogen\g00-6030\g00-6030.dwg



FD174911 BORDER  
 Last Save By Date and Time: mgooby\1/26/2017 1:59 PM\Plotstyle Table: dep-bedc - 11x17 reduced drawings.ctb  
 Date Plotted: 4/11/2017 11:04 AM\Author: mgooby\File Location: c:\pw\_working\cngpw\0923893\m22-1001.dwg



- NOTES:**
- FOR CONCRETE PAD SEE STRUCTURAL DRAWINGS FOR DETAILS.
  - PROVIDE HIGH POINT VENTS AND LOW POINT DRAINS.
  - ELEVATIONS SHOWN ON THIS DRAWING ARE BASED ON THE MSD DATUM WITH NAVD 88 DATUM LISTED IN PARENTHESIS. IN THE EVENT OF A CONFLICT, THE MSD DATUM VALUE WILL GOVERN. THE FOLLOWING DATUM CONVERSION FROM MSD TO NAVD 88 APPLIES:  
 NAVD 88 ELEVATION = MSD ELEVATION + 1.69 FEET.



MATCHLINE - FOR CONTINUATION SEE DWG M22-1005

**PLAN - LEVEL +5**  
 1/4" = 1'-0"

NO.	DATE	DESCRIPTION	APPR'D.
1	4/14/17	CONFORMED	
0	8/26/16	ISSUED FOR BID	SM
REVISIONS			

DESIGNED BY: KS
CHECKED BY: EC
DESIGN LEAD: SM
SECTION CHIEF:

DRAWN BY: MEG
<b>BLACK &amp; VEATCH</b> <small>Building a world of difference</small> Black & Veatch New York LLP 480 Park Avenue, New York, New York 10022
<b>SWIN</b> <small>SWIN ENGINEERING, P.C.</small> 25 CHARLES DRIVE PLUMBOVILLE, NY 10291

THIS DRAWING WAS  
 ORIGINALLY SEALED BY  
 STEVEN A. MARTINO  
 08/26/16 A LICENSED  
 PROFESSIONAL ENGINEER IN  
 THE STATE OF NEW YORK,  
 NO. 083631



ACCOUNTABLE MANAGER FRANK GIARDINA
PORTFOLIO MANAGER JAMES LAURIA
ASST. COMMISSIONER KENNETH MORIARTY

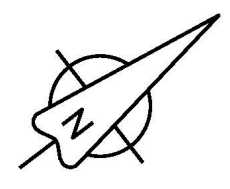
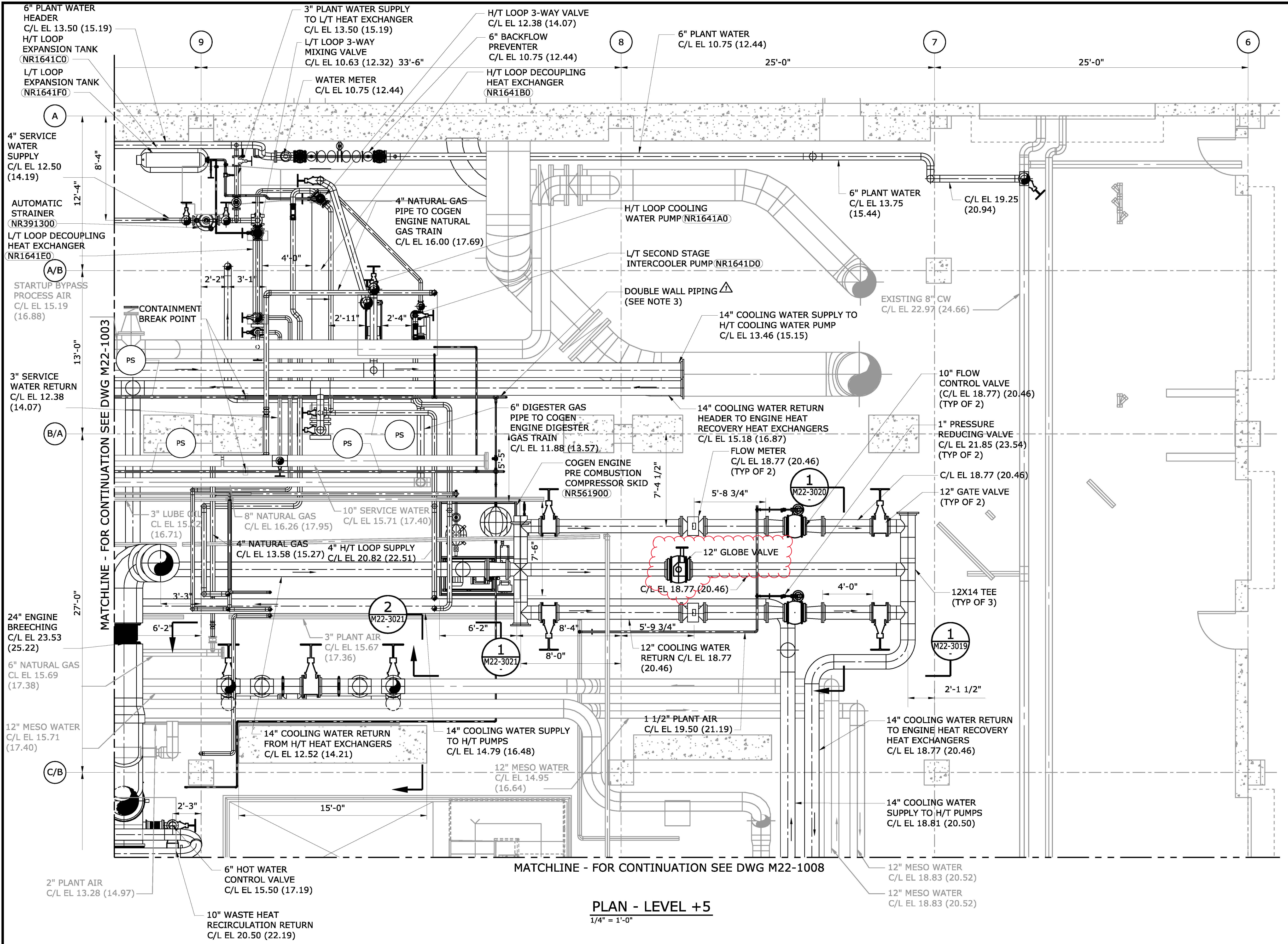
\*WARNING—IT IS A VIOLATION, OF THE NEW YORK STATE EDUCATION LAW, SECTION, 7209.2, FOR ANY PERSON, UNLESS (S)HE IS ACTING UNDER THE DIRECTION OF A LICENSED PROFESSIONAL ENGINEER, TO ALTER THIS DOCUMENT IN ANY WAY. IF ALTERED, THE ALTERING PERSON SHALL COMPLY WITH THE REQUIREMENTS OF NEW YORK EDUCATION, LAW, SECTION, 7209.2.\*

**NEW YORK CITY**  
**ENVIRONMENTAL PROTECTION**  
 BUREAU OF ENGINEERING DESIGN & CONSTRUCTION

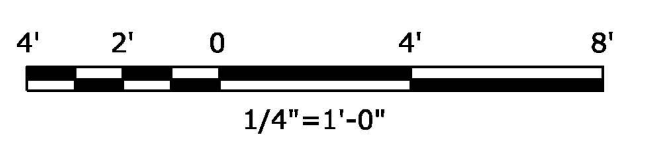
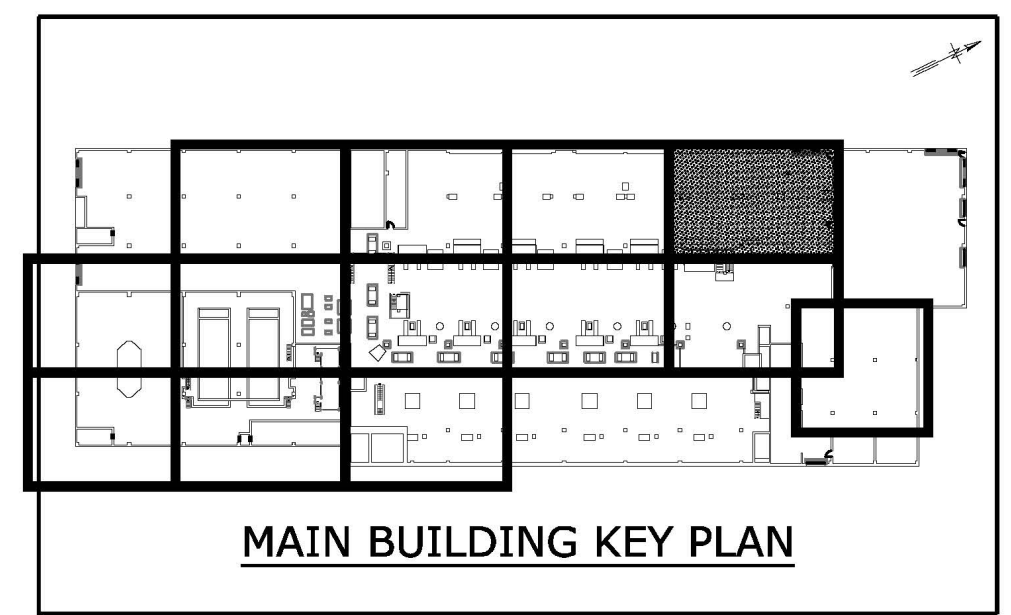
**NORTH RIVER WWTP**  
**COGENERATION & ELECTRIFICATION**  
 CONTRACT NR-38  
 MECHANICAL  
 MAIN BUILDING  
 ENLARGED PLAN AT LEVEL +5 (1 OF 13)

DATE: 8/26/16
SCALE: 1/4" = 1'-0"
SHEET NO: 337 OF 1176
DRAWING NO. M22-1001





- NOTES:**
- ELEVATIONS SHOWN ON THIS DRAWING ARE BASED ON THE MSD DATUM WITH NAVD 88 DATUM LISTED IN PARENTHESIS. IN THE EVENT OF A CONFLICT, THE MSD DATUM VALUE WILL GOVERN. THE FOLLOWING DATUM CONVERSION FROM MSD TO NAVD 88 APPLIES:  
 NAVD 88 ELEVATION = MSD ELEVATION + 1.69 FEET.
  - PROVIDE 316 STAINLESS STEEL PNEUMATIC PIPING FROM THE EXISTING 3" PLANT AIR PIPING TO 12" FLOW CONTROL VALVE. CONTRACTOR TO VERIFY LOCATION OF EXISTING PIPING AND ROUTING OF NEW PIPING.
  - PROVIDE STEEL-IN-STEEL DOUBLE WALL CONTAINMENT PIPING FOR THE 1" AND 1 1/2" NATURAL GAS PRE-COMBUSTION PIPING INCLUDING THE PRE-COMBUSTION NATURAL GAS HEADER AS SHOWN HEREIN AND UP TO THE PRE-COMBUSTION NATURAL GAS TRAIN ON LEVEL +28.



GRAPHIC SCALES  
 CHECK BEFORE USE  
 IF SHEET IS LESS THAN 22" X 34"  
 IT IS A REDUCED PRINT.  
 SCALE ACCORDINGLY

PLAN - LEVEL +5  
 1/4" = 1'-0"

Last Save By Date and Time: mgodby\2/16/2017 12:41 PM PlotStyle Table: dep-bedc - 11x17 reduced drawings.ctb  
 Date Plotted: 4/11/2017 9:57 AM Author: mgodby File Location: c:\pw\_working\cngpw\40923893\m22-1004.dwg  
 FD174911 BORDER

NO.	DATE	DESCRIPTION	APPR'D.
1	4/14/17	CONFORMED	
0	8/26/16	ISSUED FOR BID	SM
REVISIONS			

DESIGNED BY:  
 KS  
 CHECKED BY:  
 EC  
 DESIGN LEAD:  
 SM  
 SECTION CHIEF:

DRAWN BY:  
 MEG  
**BLACK & VEATCH**  
 Building a world of difference  
 Black & Veatch New York LLP  
 480 Fifth Avenue, New York, New York 10017  
**ENVIRONMENTAL PROTECTION**  
 ENVIRONMENTAL ENGINEERS, P.C.  
 3 CAMPUS DRIVE  
 PLUMANTON, NY 10929

THIS DRAWING WAS  
 ORIGINALLY SEALED BY  
 STEVEN A. MARTINO  
 08/26/16 A LICENSED  
 PROFESSIONAL ENGINEER IN  
 THE STATE OF NEW YORK,  
 NO. 083631



ACCOUNTABLE MANAGER  
 FRANK GIARDINA  
 PORTFOLIO MANAGER  
 JAMES LAURIA  
 ASST. COMMISSIONER  
 KENNETH MORIARTY

\*WARNING—IT IS A VIOLATION, OF THE NEW YORK STATE EDUCATION LAW, SECTION, 7209.2, FOR ANY PERSON, UNLESS (S)HE IS ACTING UNDER THE DIRECTION OF A LICENSED PROFESSIONAL ENGINEER, TO ALTER THIS DOCUMENT IN ANY WAY. IF ALTERED, THE ALTERING PERSON SHALL COMPLY WITH THE REQUIREMENTS OF NEW YORK EDUCATION, LAW, SECTION, 7209.2.\*

**NEW YORK CITY**  
**ENVIRONMENTAL PROTECTION**  
 BUREAU OF ENGINEERING DESIGN & CONSTRUCTION

**NORTH RIVER WWTP**  
**COGENERATION & ELECTRIFICATION**  
 CONTRACT NR-38  
 MECHANICAL  
 MAIN BUILDING  
 ENLARGED PLAN AT LEVEL +5 (4 OF 13)

DATE: 8/26/16  
 SCALE: 1/4" = 1'-0"  
 SHEET NO:  
 340 OF 1176  
 DRAWING NO.  
 M22-1004



**DETAILED SPECIFICATION 15111G – VALVES – 4 INCH AND LARGER**  
**CONTRACT NR-38**

---

- 3. Aurora
- V. V-Notch Ball Valves:
  - 1. Fisher
  - 2. Emerson
  - 3. Mascot
- W. Gas Safety Shutoff valves
  - 1. Maxon Corporation
  - 2. Honeywell
- X. Two-Way Temperature Control Globe Valves – Modulating Application
  - 1. Valvitalia
  - 2. Amot
  - 3. Dezurik
  - 4. Nor'East
- Y. Three-way Temperature Control Valve
  - 1. Amot
  - 2. Valvitalia
  - 3. Nor'East
  - 4. Dezurik
- Z. Globe Valves
  - 1. American R/D
  - 2. Mueller Water Co.
  - 3. Amot
  - 4. Valvitalia
  - 5. Nor'East
  - 6. Dezurik
- ~~AA. Backflow Preventers.~~
  - 1. Watts Regulator Company.
  - 2. Wilkins.
- BB. Motor-Operators (Open/Close and Modulating):
  - 1. Limitorque.
  - 2. Rotork.

**DETAILED SPECIFICATION 15111G – VALVES – 4 INCH AND LARGER**  
**CONTRACT NR-38**

---

3. Actuators shall be quarter turn electric with a linear output providing modulating thrust.
4. Special features:
  - a. Rugged, compact and light weight
  - b. Powerful thrust at high response speed
  - c. Low friction
  - d. No special tools required to change the bench range or to reverse the actuator action
  - e. Permissible operating temperatures from -31 to 300 degree F.
  - f. Operated by hand in case of an emergency or power outage.
  - g. Provides network system connectivity, position controls and display.
  - h. Actuator speed. 1.5 mm/sec
5. Direction of action: Actuator motor drives a gearbox connected to the rotor shaft and turns the valve rotor clockwise or counter-clockwise, a maximum of 90 degrees. At the end of the travel, limit switches isolate the electrical supply to the motor when the valve rotor has reached either end of rotation.
6. Globe valve shall be provided with an electrical modulating actuator, Amot G Series, Rotork model IQML10 or approved equal. The actuator shall be designed for minimum 1200 starts per hour and 50% duty cycled based on a modulating torque of 50% of rated torque.
7. Provide actuator, PID controller and temperature sensor as part of the valve package. Provide additional accessories and parts for approved equal products at no additional costs to the authority.
8. Actuator operating power supply shall be 460V/3ph with 4-20A control signal.
9. Actuator shall be provided with a controller located in close proximity as per manufacturer recommendations.
10. Control wiring and power supply connections from and to the actuator and PID controller shall be provided.
11. Travel: Up to 160 mm (6.3in)

D. Three-way temperature control valves shall be Valvitalia TRV model 3 or equal from Amot GEF Series, Dezurik, Nor'East or approved equal

2.30 GLOBE VALVES

A. General:

**DETAILED SPECIFICATION 15111G – VALVES – 4 INCH AND LARGER**  
**CONTRACT NR-38**

---

1. The valves shall conform to, ANSI standards and as specified herein.
  2. Sizes: 4 in.-12
  3. Type: Globe valve with end flanges conform to ANSI B16.5
  4. Design Pressure: 100 psig Internal Temperature Rating: 250 °F.
  5. Maximum Allowable Inlet Pressure: 300 psig
  6. Minimum Design Flow Rate: 700 gpm
  7. Maximum Design Flow Rate: 3200 gpm
  8. Globe valves shall have an unrestricted straight-through flow.
  9. Valve shall be operable with hand wheel or chain wheel.
  10. Hand wheel shall have an arrow and the word "Open" or "Close" indicating required rotation. Hand wheel shall operate in the clockwise direction to close.
- B. Materials of Construction: All materials of construction shall conform to the requirements of AWWA C508 and shall be as follows for various valve components:
1. Body and Seal Protector Ring: Cast Steel
  2. Bonnet: Cast Steel
  3. Seat and Plug: Cast Steel or Stainless Steel
  4. Seal Ring: PTFE with glass fiber
  5. Guide Bushing: Cast Steel or Stainless Steel
  6. Packing: V-ring packing – PTFE with carbon, Spring-high temp. packing
  7. Heating Jackets: A240 316L
  8. Seal Retainer Screws and Washers: Stainless Steel
  9. Actuator Mounting Bolts and Nuts: Grade 5 steel or strain hardened B8M stainless steel
  10. I.D. Tags and Pins: Stainless Steel
- C. Testing:
1. All valves shall be shop tested in conformance with the requirement of AWWA C507.
- D. Permitted Leakage at Design Working and Operating Pressures: Zero
- 2.31 BACKFLOW PREVENTERS
- A. Reduced Pressure Zone (RPZ) backflow preventers shall consist of isolation valves, two independent check valves, and differential relief valve.



## Request for Information (RFI) - 15

Project:	NR-38 - North River WWTP Cogeneration and Electrification	Project Number:	
Process Document:	RFI - 15	Overall Due Date:	
Current Workflow Step:	Finish	Step Due Date:	
Subject:	Globe Valves		
Status:	Approved		

Initiated on Behalf Of:		Project Commitment:	
		Date Requested By:	10.10.2017

### RFI Details

Critical?:	Yes
Problem/Description/Question:	<p>Refer to Specification Section 15111G - Valves 4" and larger. This section lists the following valves with the following manufacturers:</p> <p><b>2.01.X. Two-Way Temperature Control Globe Valves - Modulating Application:</b></p> <ol style="list-style-type: none"> <li>1. Valvitalia</li> <li>2. Amot</li> <li>3. Dezurik</li> <li>4. Nor'East</li> </ol> <p><b>2.01.Y. Three-Way Temperature Control Valves:</b></p> <ol style="list-style-type: none"> <li>1. Amot</li> <li>2. Valvitalia</li> <li>3. Nor'East</li> <li>4. Dezurik</li> </ol> <p><b>2.01.Z. Globe Valves:</b></p> <ol style="list-style-type: none"> <li>1. American R/D</li> <li>2. Mueller Water Co.</li> </ol>



3. Amot
4. Valvitalia
5. Nor'East
6. Dezurik

After reaching out to the headquarters and/or local representatives of each of the manufacturers listed above we received the following responses:

- Valvitalia
  - No local representative
  - Valves are fabricated in Italy and shipped directly
  - Not AIS compliant
  
- Amot
  - Local representative is Thermal Products Inc.
  - They mentioned they cannot meet all the requirements. Some of the reasons are:
    - Battery backup for the actuator
    - 425F operating temperatures
    - Carbon steel in the large sizes
    - Class IV leakage
    - AWWA
  
- Dezurik
  - Local representative is Tek-Sales
  - Stopped fabricating these valves a long time ago
  - The company was Nor'East and was sold
  
- Nor'East (Allagash)
  - Local representative is Raritan Valve & Automation
  - They do not make the specified valves. They are not able to quote.
  
- American R/D
  - Spoke directly with fabricator
  - They stopped fabricating these valves in the 70s
  
- Mueller Water Co.
  - Spoke directly with fabricator
  - They do not offer Globe Valves

Provide manufacturers that comply with project requirements.

Spec Section & Paragraph:

15111G (2.01.X, 2.01.Y, 2.01.Z)

Drawing Reference:

N/A

Code Reference/Other Reference:	
Suggested Solution:	<b>Provide manufacturers that comply with project requirements.</b>
Potential Cost Impact:	<b>No</b>
Potential Schedule Impact:	<b>No</b>

#### Originated From

Non-Conformance Report:	
-------------------------	--

#### RFI Response

Response:	<p><b>The following clarification is provided in reference to Detailed Specification 15111G.</b></p> <p><b>Articles 2.01 X. and 2.28 - Delete the word "Globe" from the heading.</b></p> <p><b>Article 2.28 A. 1. a - The temperature range should be: 14 to 212 degrees Fahrenheit.</b></p> <p><b>Article 2.28 A. 3. - Delete and replace the word "globe" with "control"</b></p> <p><b>Article 2.28 C. 5. - Delete the word first word "Globe" and replace with "Control."</b></p> <p><b>Article 2.29 A. 1. a - The temperature range should be: 14 to 212 degrees Fahrenheit.</b></p> <p><b>Article 2.29 A. 3. - Please delete the word "globe."</b></p> <p><b>Article 2.29 C. 6. - Delete the word first word "Globe" and replace with "Control."</b></p> <p><b>Article 3.04 Valve Schedule - For Valves 1650DV, 1650EV and 1650FV, Revise the Type to "Two-Way Control"</b></p> <p><b>Manufacturers that can provide two way control valves, three way control valves, and globe valves that meet the contract requirements are as follows:</b></p> <p><b>Article 2.01 X. - Two way Control Valve - Modulating Application</b></p> <ol style="list-style-type: none"> <li><b>1. Mascot</b></li> <li><b>2. DeZurik - DeZurik Model RCV-Rotary Control Valve with Carbon steel body meets the specification requirement, They even comply with ANSI/FCI 70-2 - Control Valve Seat Leakage Classification - Class IV - metal to metal with a metal seat. Most of the material of construction for this valve are rated for high temperature.</b></li> </ol> <p><b>Article 2.01 Y. - Three-Way Temperature Control Valve</b></p> <ol style="list-style-type: none"> <li><b>1. Mascot</b></li> <li><b>2. Amot - Amot GEF and GPD Series fabricated of stainless steel or Ductile iron for sizes up to 16" is available and can meet the design specification with</b></li> </ol>
-----------	----------------------------------------------------------------------------------------------------------------------------------------------------------------------------------------------------------------------------------------------------------------------------------------------------------------------------------------------------------------------------------------------------------------------------------------------------------------------------------------------------------------------------------------------------------------------------------------------------------------------------------------------------------------------------------------------------------------------------------------------------------------------------------------------------------------------------------------------------------------------------------------------------------------------------------------------------------------------------------------------------------------------------------------------------------------------------------------------------------------------------------------------------------------------------------------------------------------------------------------------------------------------------------------------------------------------------------------------------------------------------------------------------------------------------------------------------------------------------------------------------------------------------------------------------------------------------------------------------------------------------------------------------------------------------------------------------------------------------------------------------------------------------------------------------------------------------------------------------------------------------------

temperature up to 212 deg F. They can meet the leakage classification for stainless steel and nitrile (rubber) and or Ductile iron with Viton.

**Article 2.01 Z. - Globe Valve**

- 1. Mascot**
- 2. Powell Valves**
- 3. William Valve Corporation**

The following bullets provide further clarification:

- 1. No Battery backup is specified in Specification 15111G.**
- 2. Temperature range is as revised above.**
- 3. Carbon steel flanges are available in accordance with ANSI B16.5.**
- 4. Class IV leakage classification - Both two way and three way control valves with the type of seat material can meet the class IV leakage classification in accordance with ANSI/FCI 70-2.**
- 5. AWWA-Testing shall be in accordance with API 598.**

**Comments**

Khalil Rouchdy, Yonkers Contracting, 10.03.2017 8:54 AM

A document was attached

**Files Attached:** RFI-015 Final.pdf

**Attached Documents**

File Name	Attached By	Date Attached	Step
RFI-015 Final.pdf	Rouchdy, Khalil (Yonkers Contracting)	10.03.2017	RE Review



# CONSTRUCTION MANAGEMENT SERVICES REQUEST FOR INFORMATION



<b>Project:</b>			
<b>Contract:</b>		<b>DEP AM:</b>	
<b>Contract No:</b>		<b>CM:</b>	
<b>Contractor:</b>		<b>EOR:</b>	

## FOR CONTRACTOR

<b>RFI NUMBER:</b>	
<b>RFI TITLE:</b>	

### PROBLEM DESCRIPTION:

--

<b>Attachments:</b>	
---------------------	--

### REFERENCES

<b>Specification:</b>	
<b>Drawing:</b>	
<b>Code/Other:</b>	

### APPROVAL FOR RELEASE

<b>Initiated by:</b>		<b>Signature</b>	<b>Date</b>
		<i>Khalil Rouchdy</i>	
<b>Date Required by:</b>			

## ENGINEER RESPONSE

### PROBLEM SOLUTION:

--

<b>Attachments:</b>	
---------------------	--

<b>Check one that applies:</b>	
<b>No Cost Impact to Contract</b>	
<b>Credit is due back to the City</b>	
<b>Payment is Due to the Contractor</b>	
<b>To Be Determined</b>	

<b>Answered by:</b>		<b>CM Approval:</b>	
<b>Date:</b>		<b>Date :</b>	

Refer to Specification Section 15111G - Valves 4” and larger. This section lists the following valves with the following manufacturers:

2.01.X. Two-Way Temperature Control Globe Valves – Modulating Application:

1. Valvitalia
2. Amot
3. Dezurik
4. Nor’East

2.01.Y. Three-Way Temperature Control Valves:

1. Amot
2. Valvitalia
3. Nor’East
4. Dezurik

2.01.Z. Globe Valves:

1. American R/D
2. Mueller Water Co.
3. Amot
4. Valvitalia
5. Nor’East
6. Dezurik

After reaching out to the headquarters and/or local representatives of each of the manufacturers listed above we received the following responses:

- Valvitalia
  - No local representative
  - Valves are fabricated in Italy and shipped directly
  - Not AIS compliant
- Amot
  - Local representative is Thermal Products Inc.
  - They mentioned they cannot meet all the requirements. Some of the reasons are:
    - Battery backup for the actuator
    - 425F operating temperatures
    - Carbon steel in the large sizes
    - Class IV leakage
    - AWWA
- Dezurik
  - Local representative is Tek-Sales
  - Stopped fabricating these valves a long time ago
  - The company was Nor’East and was sold

RFI 015 – Globe Valves

Additional Comment Sheet.

- Nor'East (Allagash)
  - Local representative is Raritan Valve & Automation
  - They do not make the specified valves. They are not able to quote.
  
- American R/D
  - Spoke directly with fabricator
  - They stopped fabricating these valves in the 70s
  
- Mueller Water Co.
  - Spoke directly with fabricator
  - They do not offer Globe Valves

Provide manufacturers that comply with project requirements.

Good morning sir,

As discussed on the phone our valves do not conform to the American Iron and Steel requirements (AIS).

More so, if you can bypass that requirement you will need to go through a distributor to purchase these valves. Here is a list of distributors in New York:

Albany - F W WEBB COMPANY (518-472-9322)  
Binghamton - F W WEBB COMPANY (518-472-9322)  
Horseheads - WOLSELEY INDUSTRIAL (607-739-3013)  
Newburgh - F W WEBB COMPANY (845-567-0242)  
Niagara Falls - LAKES PIPE & SUPPLY (800-654-0465)  
Queensbury - F W WEBB COMPANY (518-792-1316)  
Rochester - WOLSELEY INDUSTRIAL (585-458-2930)  
Syracuse - F W WEBB COMPANY (315-476-9322)

Let me know if you have any questions!

*All quotations and orders are processed according to Powell's Terms & Conditions. Any deviations must be communicated to buyer in writing by management of The WM. Powell Company. Link to [The WM. Powell Company Terms & Conditions](#)*

**Joshua Mannix**  
Customer Service Representative  
**The Wm. Powell Company**  
T: 513.852.2269  
F: 513.852.2997  
[powellvalves.com](http://powellvalves.com)



**HIGH PERFORMANCE  
BUTTERFLY VALVES**  
REAL PERFORMANCE  
REAL ADVANTAGE

---

This message has been filtered by Cohere Communication's Email Security System to scan for

virus threats and reduce unwanted SPAM.

---



Carl,

In researching manufacturers of cast steel valves, gate, globe and checks, I have been unable to find one that actually casts them in in the US.

Ray

--

Regards,  
Ray Virgens



Email: [ray.virgens@tek-sales.com](mailto:ray.virgens@tek-sales.com)

Cell: (201) 563-6594

Phone: (585) 426-4580



***"The Bitterness of Low Quality Remains Long after the Sweetness of Low Price is Forgotten"***

---

This message has been filtered by Cohere Communication's Email Security System to scan for virus threats and reduce unwanted SPAM.

On Mon, May 14, 2018 at 10:53 AM, Carl Pica <[cpica@yonkerscontractingco.com](mailto:cpica@yonkerscontractingco.com)> wrote:

Ray,

Just left you a message. Give me a call back when you get a chance.

Thanks,

**Carl Pica**

Project Engineer



***Yonkers Contracting Company***

North River WWTP

T 646.374.0133

C 914.261.0223

[cpica@yonkerscontractingco.com](mailto:cpica@yonkerscontractingco.com)

*Yonkers Contracting Celebrates 70<sup>th</sup> Anniversary with New Website Launch-*

[www.yonkerscontractingco.com](http://www.yonkerscontractingco.com)

Response from  
Williams Valve

Carl,

Our Globe valves are not AIS compliant. Valves are made overseas.

Best Regards,

Glen Werthmuller

---

**From:** Carl Pica <[cpica@yonkerscontractingco.com](mailto:cpica@yonkerscontractingco.com)>

**Sent:** Monday, May 7, 2018 8:35:06 AM

**To:** wew

**Subject:** RE: North River WWTP Globe Valves

Just following up, please confirm receipt of this email.

**Carl Pica**

Project Engineer



**Yonkers Contracting Company**

North River WWTP

T 646.374.0133

C 914.261.0223

[cpica@yonkerscontractingco.com](mailto:cpica@yonkerscontractingco.com)

*Yonkers Contracting Celebrates 70<sup>th</sup> Anniversary with New Website Launch-*  
[www.yonkerscontractingco.com](http://www.yonkerscontractingco.com)

**From:** Carl Pica

**Sent:** Thursday, May 3, 2018 1:21 PM

**To:** 'wew@williamsvalve.com' <[wew@williamsvalve.com](mailto:wew@williamsvalve.com)>

**Subject:** North River WWTP Globe Valves

Good Morning,

We are looking for AIS compliant Globe Valves 10 and 12". If these are not made AIS compliant then we need a statement to that effect in writing via email, so we can request a project waiver. If you need additional information please let me know.

Thanks,

**Carl Pica**

Project Engineer



**Yonkers Contracting Company**

North River WWTP

T 646.374.0133

C 914.261.0223

[cpica@yonkerscontractingco.com](mailto:cpica@yonkerscontractingco.com)

*Yonkers Contracting Celebrates 70<sup>th</sup> Anniversary with New Website Launch-*  
[www.yonkerscontractingco.com](http://www.yonkerscontractingco.com)

---

This message has been filtered by Cohere Communication's Email Security System to scan for virus threats and reduce unwanted SPAM.

---



To Yonkers contracting,

This is regarding the valves quoted by us as per your order no 17-0257-29.

Unfortunately, Mascot USA would not be able to comply with the AIS requirements in their entirety for these valves.

