

Update | February 2019



EnviroAtlas Update Bulletin

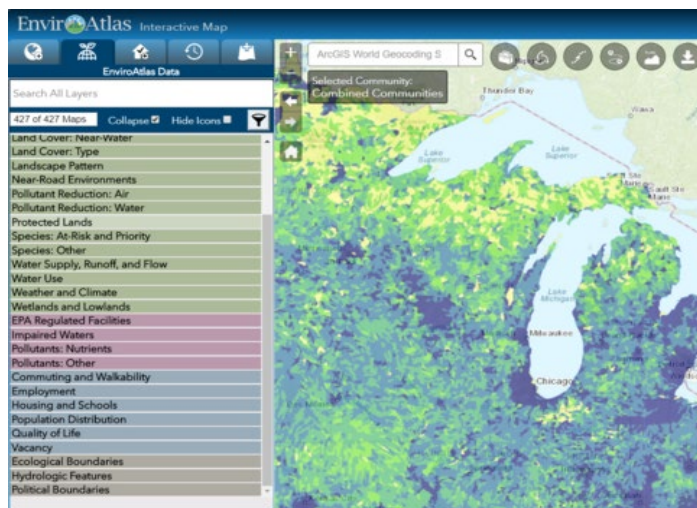
Keep up with the latest in EnviroAtlas news

IN THIS UPDATE

- New Map Features | [Universal Search](#)
- New Map Tools | [Featured Collections](#) and [Demographic Widget](#) Debut
- New Data | [National Floodplains](#), [Species Richness](#), [and More](#)

New Map Features

The EnviroAtlas Team is excited to announce a new Interactive Map layout and enhanced map features to improve user experience.



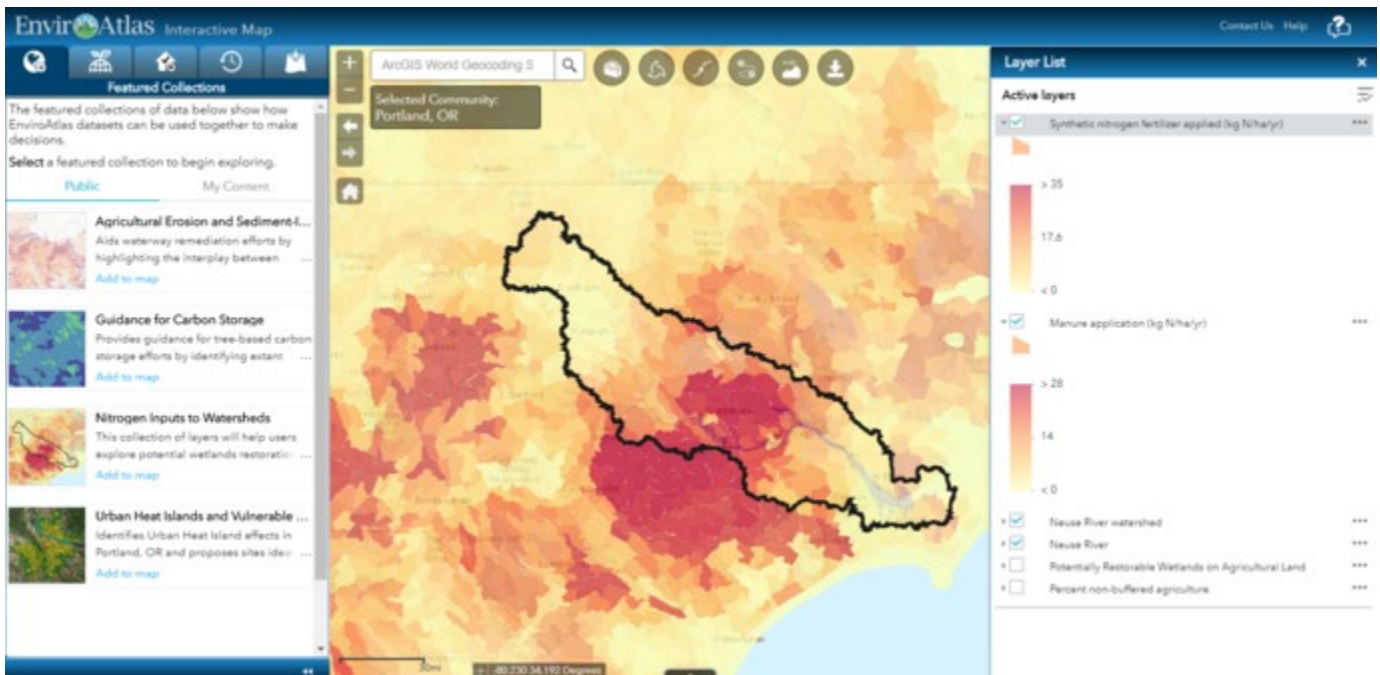
Universal Search

All [EnviroAtlas data layers](#), including *people and built spaces* and *boundaries*, are now housed under a single tab.

Users can now easily search all 400+ data layers.

[Explore in the Interactive Map >>](#)

Featured Collections Widget



Featured Collections are clusters of data that highlight different environmental decision-making contexts.

The new EnviroAtlas widget contains four Featured Collections:

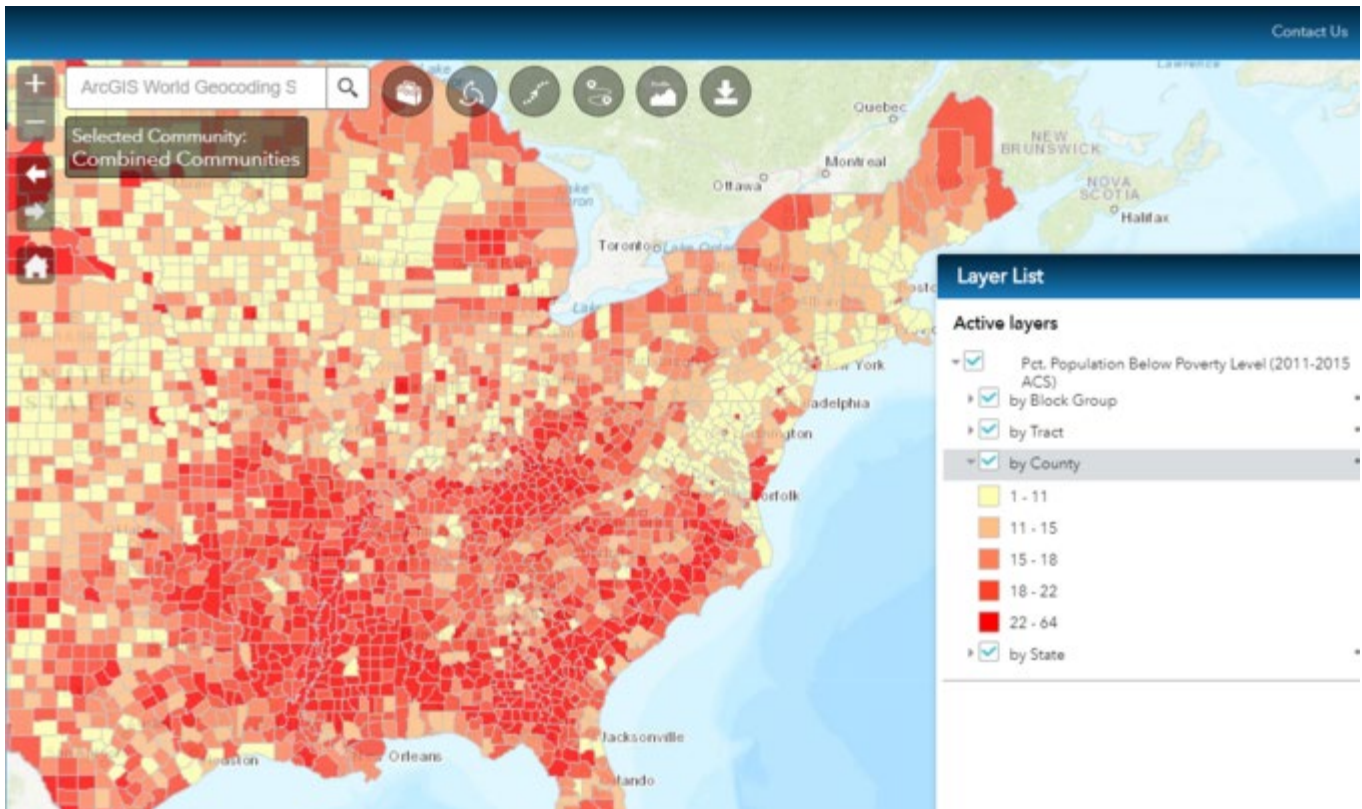
- [Agricultural Erosion and Sediment-Impaired Waterways](#)
- [Guidance for Carbon Storage](#)
- [Nitrogen Inputs to Watersheds](#)
- [Urban Heat Islands and Vulnerable Populations](#)

More collections will be added throughout 2019. Have an idea for a Featured Collection? [Contact us!](#)

Demographics Widget

The *Demographic widget* contains data sourced from the 2011-2015 American Community Survey (ACS) & US 2000 & 2010 Census data. The widget contains:

- hundreds of demographic variables
- user-preferred symbology (chloropleth OR markers)
- and scale-dependent data displays (e.g., county, census tract, and census block group) that recalculate when the map is zoomed in or out

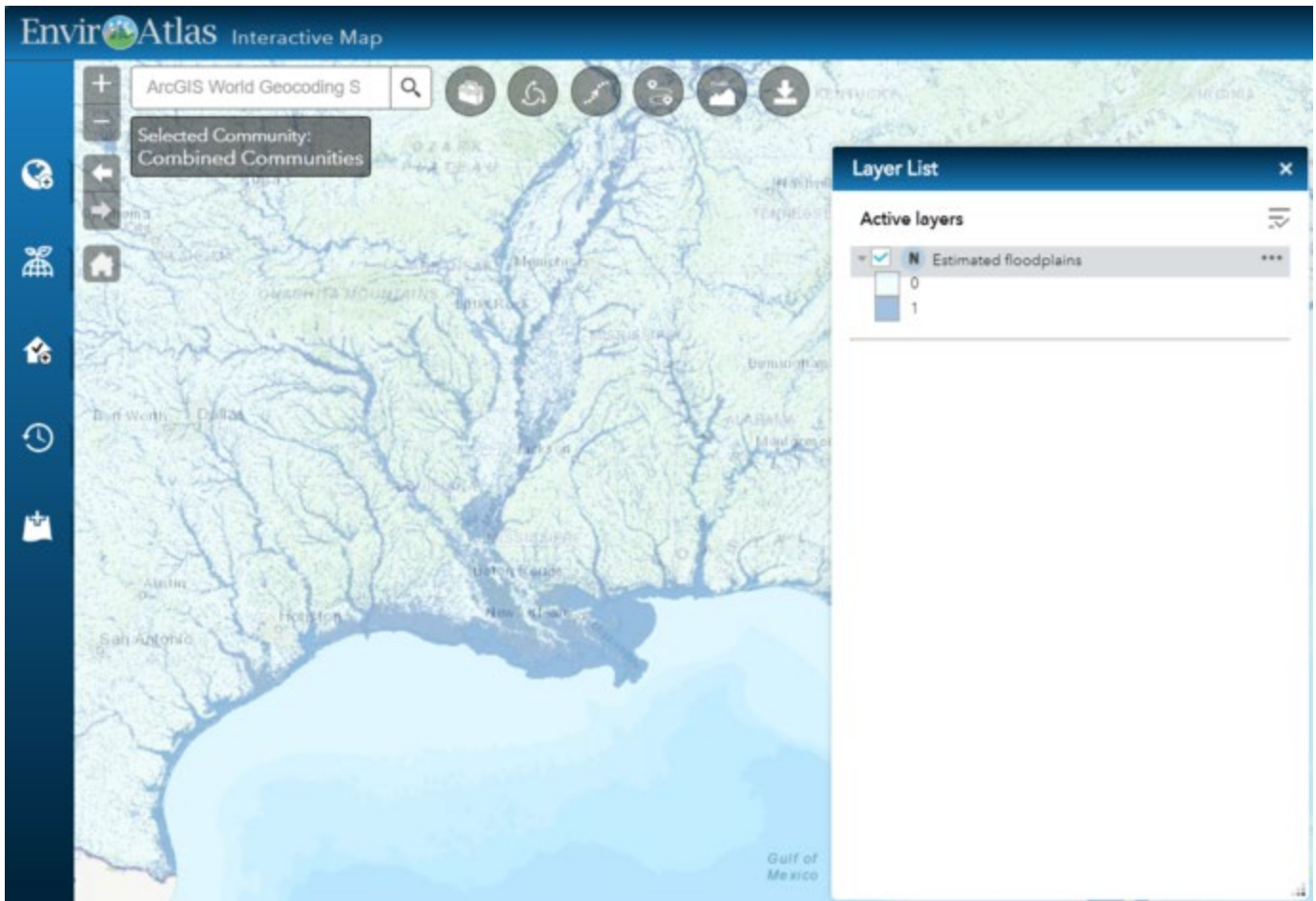


% US population below the poverty level, by county.

[Explore these updates in the Interactive Map >>](#)

New Data Floodplains

- [Estimated Floodplains data](#) were developed to close critical gaps where FEMA Digital Flood Insurance Rate Maps are unavailable. FEMA floodplain data were used to train a machine-learning algorithm to predict floodplain presence or absence for the entire continental United States, establishing full National coverage.
- [FEMA based flood hazard data](#) were recently released, allowing for census-block scale identification of land area, impervious surface, and population in flood risk zones in the 24 EnviroAtlas community areas.



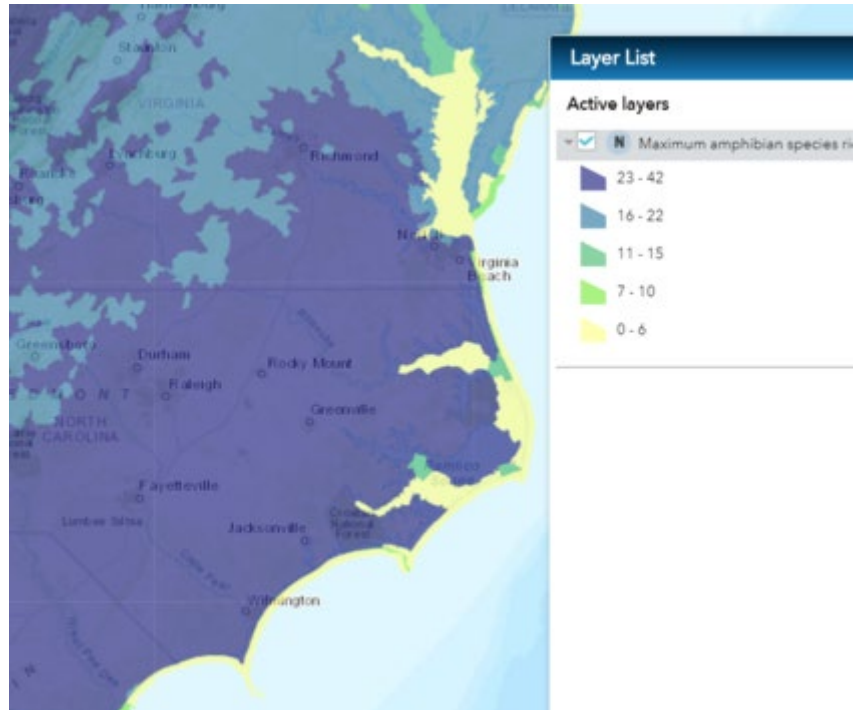
Estimated floodplain presence (1, dark blue) or absence (0, white) at 30 m resolution for the United States. Focal region: Mississippi river watershed & delta.

Modeled Species Richness

Previously available for Southeast and Southwest regions only, these EnviroAtlas Species Richness data are derived from habitat suitability models and now extend across the country for wall-to-wall National coverage. New and existing species richness data are available for:

- [amphibians](#)
- [reptiles](#)
- [mammals](#)
- [birds](#)
- [threatened & endangered species](#)
- [large & small game](#)
- and more!

All of the layers related to species richness give users the option to select from maximum richness, mean richness, or Normalized Index of Biodiversity (NIB).



Other new data layers:

- Roads near streams
 - Identifies paved roadways within 50 m of a stream for enhanced runoff mitigation planning.
- Percent tree canopy
 - Percent of land area that is covered by tree canopy within each subwatershed (12 digit HUC).
- Percent tree canopy in stream buffers
 - Percent of tree canopy in the riparian buffer zone.
- Population by HUC12
 - Population summarized by subwatershed.

[Use our data matrix to search and sort our 400+ data layers >>](#)

EnviroAtlas interactive tools allow users to discover, analyze, and download data and maps related to ecosystem services, or the benefits people receive from nature.