

PINEVILLE UTILITY COMMISSION

**P.O. Box 277
PINEVILLE, KENTUCKY 40977
PHONE (606) 337-6611
FAX (606) 337-6846**

April 22, 2019

Terry Humphries, P.E.
Supervisor, Engineering Section
Water Infrastructure Branch
KY Division of Water
300 Sower Blvd, 3rd Floor
Frankfort, KY 40601

Re: Project Waiver Request for American Iron and Steel Requirements
Pineville Utility Commission
Pineville WTP Expansion
Pineville, KY
WX # 21013918
KIA Loan # F18-003

Dear Mr. Humphries:

The City of Pineville and the Pineville Utility Commission are seeking an availability waiver for the subject project based on the lack availability and the extensive long lead time for acquisition of a 20" x 16" FLG reducing bend fitting and a 20" FLG Cross. The delivery time of 5 – 6 months will lead to the construction of the project exceeding the Contract dates for substantial and final completion. The Pineville WTP is also in dire need to have the new package WTP installed due to structural concerns with the existing units.

General Background:

Project Description

The Project consists of the installation of an additional 2.0 mgd package type water treatment plant with supporting pipes, valves, flow control devices, electrical and instrumentation. The new WTP is designed to provide additional water treatment capacity and also increase the dependability of the treatment system. The project schedule became significantly more important when the one of the existing package WTP's experienced structural failure during design of the new WTP. The problem was addressed for the short term but the both existing WTPs need to be intermittingly shut down and the structural repairs fully implemented. The repair contractor could not provide an estimate for how long the short term repair may hold so installation of the new WTP as soon as possible is imperative.

About the Fittings

The W. Rogers Company notified the City and the City's engineer, HDR Engineering, about two fittings that they recently were notified by their supplier of an extremely long and unforeseen manufacturing lead time. The 3 fittings have 5-6 month lead times due to the AIS domestic sourcing, size and type. Fortiline Waterworks of Georgetown, Ky. has checked with multiple fitting manufacturers and the lead time is the same or relative. Please find attached drawings indicating the fittings as shown highlighted on the attached drawings. The unexpected lead time greatly jeopardizes the contractor's ability to meet the construction schedule. The contractor originally addressed the AIS requirements without any expected problems and the recent change in events leads to the waiver request.

Waiver Request Details:

- Description of the construction materials:
 - Cement lined ductile iron
- Unit of measure:
 - The unit of measure is each
- Quantity:
 - (1) 20" x 16" FLG reducing bend fitting
 - (1) 20" FLG Cross
- Price:
 -
 -
- Time of delivery:
 - 22 – 24 weeks
- Location of the construction project:
 - Pineville WTP
 - Pineville, KY
- Detailed Justification:
 - The justification behind this waiver request is the lack of a timely delivery of the listed fittings that are manufactured in the USA that meets both the specification and AIOS requirements. The extended delivery delay would cause the project to exceed the Contracted completion date.
 - The fittings are not a standard size to meet the flow and design requirements.
 - The contractor was not able to find another supplier that can achieve a quicker delivery.
 - The only way to meet the construction schedule is to reach out to another source that is not AIS compliant. All other fittings and valves will be AIS compliant and the need for a waiver has been kept to a minimum.

Attachments:

- Highlighted drawings indicating the fittings location.
- Frontline's stated price for the fittings
- Supplier's statements of delivery
- Construction schedule

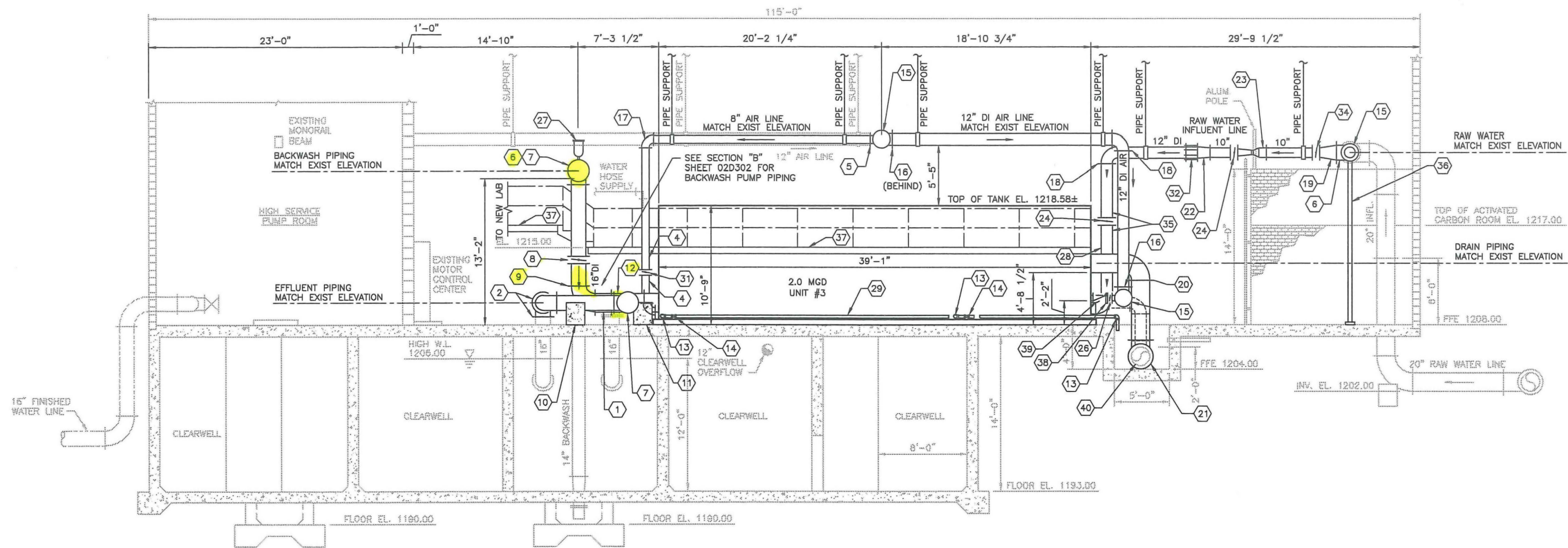
If you should have any questions concerning this evaluation, please contact Jerry Mc Clary with HDR Engineering at (859) 629 – 4830.

Sincerely,



Robert Roan, P.E.
Utility Manager

This waiver request was submitted to the EPA by the state of Kentucky. All supporting correspondence and/or documentation from contractors, suppliers or manufacturers included as a part of this waiver request was done so by the recipient to provide an appropriate level of detail and context for the submission. There may be documents with project diagrams, schedules, and supplier correspondence in formats that do not meet the Federal accessibility requirements for publication on the Agency's website. Hence, these exhibits have been omitted from this waiver publication. They are available upon request by emailing SRF_AIS@epa.gov.



SECTION
3/16"=1'-0"
A 02D101

- KEY NOTES:**
- (1) 18" LONG X 20" DIA. FLANGED SPOOL PIECE
 - (2) 16" DUCTILE IRON FLANGED 90° BEND
 - (3) OPEN
 - (4) 8" SPOOL PIECE
 - (5) 12"x8" DUCTILE IRON FLANGED TEE
 - (6) 16" DUCTILE IRON FLANGED TEE
 - (7) 16" DUCTILE IRON BLIND FLANGE
 - (8) REPLACE 16" FINISHED WATER FLANGED BUTTERFLY VALVE W/ ELECTRIC ACTUATOR (TOTAL 3)
 - (9) 20"x16" DUCTILE IRON FLANGED REDUCING ELBOW
 - (10) CONCRETE PIPE SUPPORT FOR 16" PIPE
 - (11) CONCRETE PIPE SUPPORT FOR 20" PIPE
 - (12) 20" DUCTILE IRON FLANGED CROSS
 - (13) 3" SCHEDULE 40 PVC 90° BEND
 - (14) 3" SCHEDULE 40 PVC BALL VALVE
 - (15) 12" DUCTILE IRON BLIND FLANGE
 - (16) 12" DUCTILE IRON FLANGED TEE
 - (17) 8" DUCTILE IRON FLANGED 90° BEND
 - (18) 12" DUCTILE IRON FLANGED 90° BEND
 - (19) 16"x10" DUCTILE IRON FLANGED REDUCER
 - (20) 20" DUCTILE IRON FLANGED 90° BEND
 - (21) 20" DUCTILE IRON FLANGED TEE
 - (22) 12"x10" DUCTILE IRON FLANGED REDUCER
 - (23) 10" PFS RATE OF FLOW CONTROLLED VENTURI FLOW METER OR APPROVED EQUAL WITH STRAIGHT PIPE RUNS OF AT LEAST 50' BEFORE METER AND AT LEAST 30' AFTER METER.
 - (24) RAW WATER 12" BUTTERFLY VALVE W/ ELECTRIC ACTUATOR
 - (25) 12" FLANGED CHECK VALVE
 - (26) 6" BUTTERFLY VALVE AND AIR PNEUMATIC OPERATOR W/ ELECTRIC ACTUATOR
 - (27) 2" COMBINATION AIR VALVE
 - (28) 12" DUCTILE IRON INFLUENT PIPE
 - (29) 3" PVC SCHEDULE 40 DRAIN
 - (30) 8" FLANGED CHECK VALVE
 - (31) 8" FLANGED BUTTERFLY VALVE WITH ELECTRIC ACTUATOR
 - (32) 12" FLANGED COUPLING ADAPTER WITH RESTRAINT
 - (33) OPEN
 - (34) 10" FLANGED MANUAL BUTTERFLY VALVE
 - (35) 12" SPOOL PIECE
 - (36) PIPE STANCHION
 - (37) ACCESS CATWALKS AND HANDRAILS (TYP.) VERTICAL COLUMN SUPPORTS NOT SHOWN TO PROMOTE CLARITY OF PROCESS PIPING. SEE ALSO STRUCTURAL SHEETS FOR MORE HANDRAIL AND CATWALK DETAILS.
 - (38) 2" FLANGE FILLER (APPROXIMATE) CONTRACTOR TO WORK OUT FILLERS NEEDED TO OPEN AND CLOSE VALVES.
 - (39) 6" FLANGED CHECK VALVE
 - (40) 20" DUCTILE IRON FLANGED DRAIN



ISSUE	DATE	DESCRIPTION
A	05/2018	ISSUED FOR BIDS
	03/10/16	KDOW SUBMITTAL
	02/01/16	100% DESIGN PLANS - NOT FOR CONSTRUCTION
	06/02/15	60% DESIGN PLANS - NOT FOR CONSTRUCTION

PROJECT MANAGER	BRENT A. TIPPEY, P.E.
DESIGNED	J.T. McCLARY
DRAWN	T.M. ALEKSIN
CHECKED	J.T. McCLARY
QA/QC	B.A. TIPPEY
	M.K. MESSINGER
PROJECT NUMBER	10022668



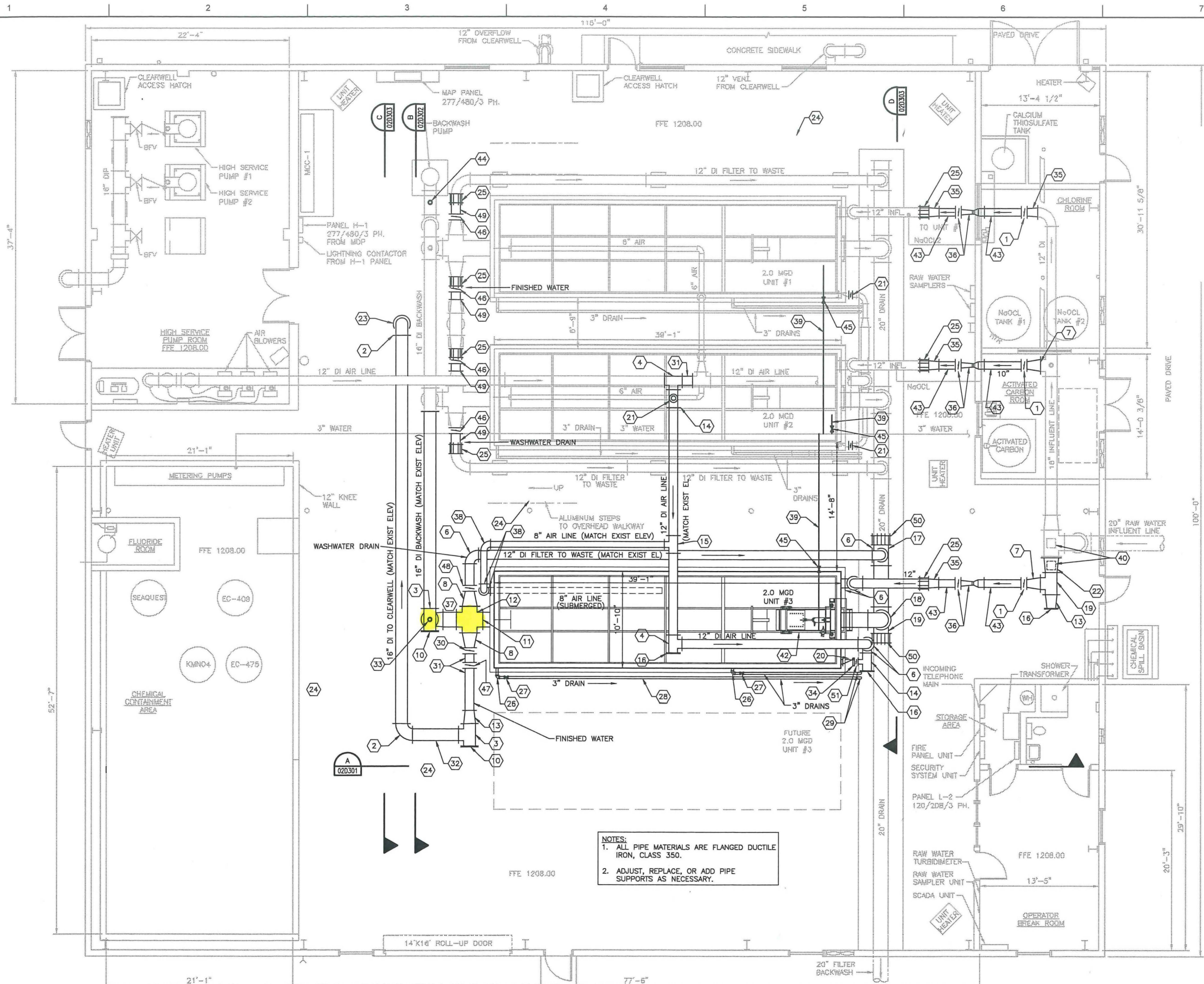
Pineville Utility Commission
PINEVILLE WTP EXPANSION
PINEVILLE, KENTUCKY



FILENAME | 02D301.dwg
SCALE | 3/16"=1'-0"

PROCESS PIPING LEVEL SECTIONS

SHEET
02D301



- KEY NOTES:**
- 1 10" DUCTILE IRON MANUAL BUTTERFLY VALVE
 - 2 16" DUCTILE IRON FLANGED 90° BEND
 - 3 16" DUCTILE IRON FLANGED TEE
 - 4 12" DUCTILE IRON FLANGED TEE
 - 5 NOT USED
 - 6 12" DUCTILE IRON FLANGED 90° BEND
 - 7 16"x10" DUCTILE IRON FLANGED REDUCER
 - 8 20"x12" DUCTILE IRON FLANGED REDUCER
 - 9 OPEN
 - 10 16" DUCTILE IRON BLIND FLANGE
 - 11 20"x16" DUCTILE IRON FLANGED REDUCING ELBOW
 - 12 20" DUCTILE IRON FLANGED CROSS
 - 13 16"x12" DUCTILE IRON FLANGED REDUCER
 - 14 12"x8" DUCTILE IRON FLANGED TEE
 - 15 12"x8" DUCTILE IRON FLANGED TEE
 - 16 12" DUCTILE IRON BLIND FLANGE
 - 17 20"x12" DUCTILE IRON FLANGED TEE
 - 18 20" DUCTILE IRON FLANGED 90° ELBOW
 - 19 20" DUCTILE IRON FLANGED TEE
 - 20 6" FLANGED CHECK VALVE
 - 21 6" ELECTRICALLY ACTUATED AIR SURGE RELIEF BUTTERFLY VALVE
 - 22 20"x16" DUCTILE IRON FLANGED REDUCER
 - 23 CONNECT 16" FILTERED EFFLUENT LINE TO EXISTING 16" FLANGE TO CLEARWELL
 - 24 SEE SHEET 00A101 FOR STAIR AND CATWALK CONFIGURATIONS FOR TANKAGE ACCESS.
 - 25 12" FLANGED COUPLING ADAPTER W/RESTRAINT
 - 26 3" SCHEDULE 40 PVC 90° ELBOW
 - 27 3" SCHEDULE 40 PVC BALL VALVE
 - 28 3" SCHEDULE 40 PVC PIPE
 - 29 3" SCHEDULE 40 PVC PIPE DROPS INTO TRENCH DRAIN
 - 30 12" DUCTILE IRON MANUAL BUTTERFLY VALVE
 - 31 12" DUCTILE IRON SPOOL PIECE
 - 32 16" FLANGED DUCTILE IRON SPOOL PIECE, LENGTH AS NEEDED
 - 33 3" COMBINATION AIR VACUUM VALVE
 - 34 2" FLANGE FILLER (APPROXIMATE), CONTRACTOR TO WORK OUT. FILLERS NEEDED TO OPEN AND CLOSE VALVES.
 - 35 12"x10" DUCTILE IRON FLANGED REDUCER
 - 36 10" VENTURI METER W/ELECTRICALLY ACTUATED MODULATING BUTTERFLY VALVE (RATE-OF-FLOW CONTROLLER)
 - 37 18" LONG X 20" DIA. FLANGED SPOOL PIECE
 - 38 8" DUCTILE IRON FLANGED 90° ELBOW
 - 39 1/2" COPPER WATER LINE FOR WASTE GATE OPERATOR
 - 40 NEW PIPE STANCHION TO SUPPORT INFLUENT PIPING (MATCH EXISTING SUPPORT)
 - 41 12"x8" DUCTILE IRON FLANGED LONG RADIUS REDUCING 90° BEND
 - 42 NEW WASTE GATE
 - 43 10" DUCTILE IRON FLANGED SPOOL PIECE
 - 44 REPLACED EXISTING AIR RELEASE VALVE
 - 45 1/2" MANUAL GATE VALVE
 - 46 REPLACE 12" FINISHED WATER VALVE AND AIR PNEUMATIC OPERATOR WITH NEW BUTTERFLY VALVE AND ELECTRIC OPERATOR
 - 47 INSTALL NEW 12" FINISHED WATER BUTTERFLY VALVE AND ELECTRIC OPERATOR
 - 48 INSTALL NEW 12" WASTE VALVE AND ELECTRIC OPERATOR
 - 49 12" FLANGED X PLAIN END PIPE
 - 50 20" FLANGED COUPLING ADAPTER W/RESTRAINT
 - 51 ELECTRIC OPERATED BUTTERFLY VALVE

NOTES:
 1. ALL PIPE MATERIALS ARE FLANGED DUCTILE IRON, CLASS 350.
 2. ADJUST, REPLACE, OR ADD PIPE SUPPORTS AS NECESSARY.



ISSUE	DATE	DESCRIPTION
A	05/2018	ISSUED FOR BIDS
	03/10/16	KDOW SUBMITTAL
	02/01/16	100% DESIGN PLANS - NOT FOR CONSTRUCTION
	06/02/15	60% DESIGN PLANS - NOT FOR CONSTRUCTION

PROJECT MANAGER	BRENT A. TIPPEY, P.E.
DESIGNED	J.T. McCLARY
DRAWN	T.M. ALEKSIN
CHECKED	J.T. McCLARY
QA/QC	B.A. TIPPEY
	M.K. MESSINGER
PROJECT NUMBER	10022668



Pineville Utility Commission
PINEVILLE WTP EXPANSION
PINEVILLE, KENTUCKY



PROCESS PIPING LEVEL PLAN

FILENAME | 02D101.dwg
 SCALE | 3/16"=1'-0"

SHEET | 02D101