



# Changes in Nonroad Mobile Inventories in the Washington, DC Region from 2011 to 2014

Joseph Jakuta (DOEE)

2019 International Emissions Inventory Conference

July 30, 2019

Dallas, TX

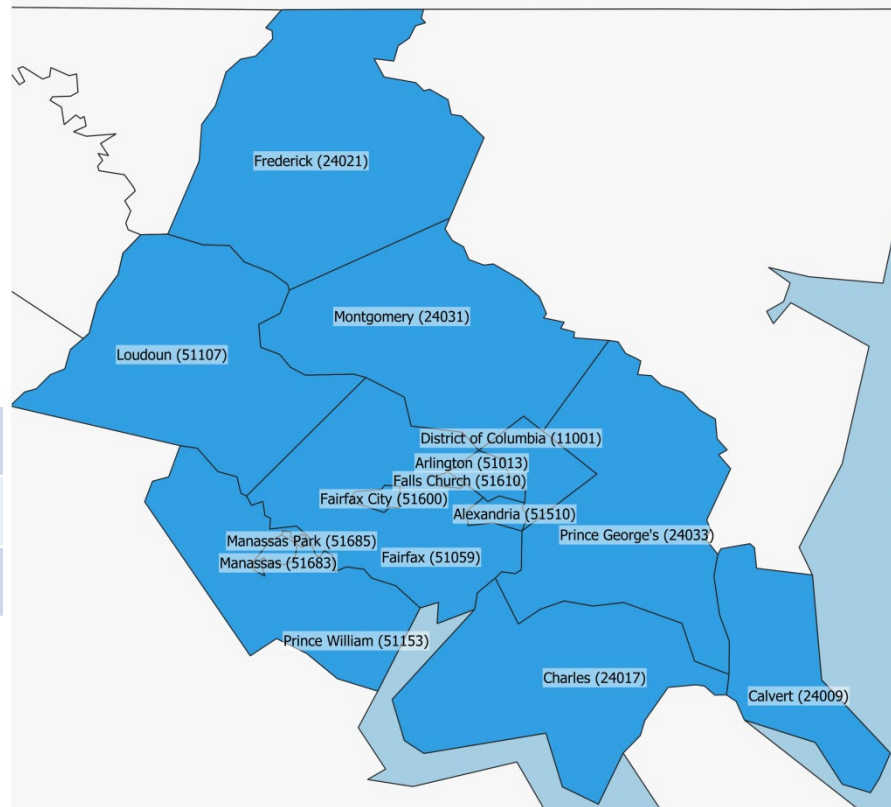
[joseph.jakuta@dc.gov](mailto:joseph.jakuta@dc.gov)

# Overview

- Reran using NEI Inputs
  - Inventory Mode
  - 15 Counties in DC NAA
  - 8 Combinations

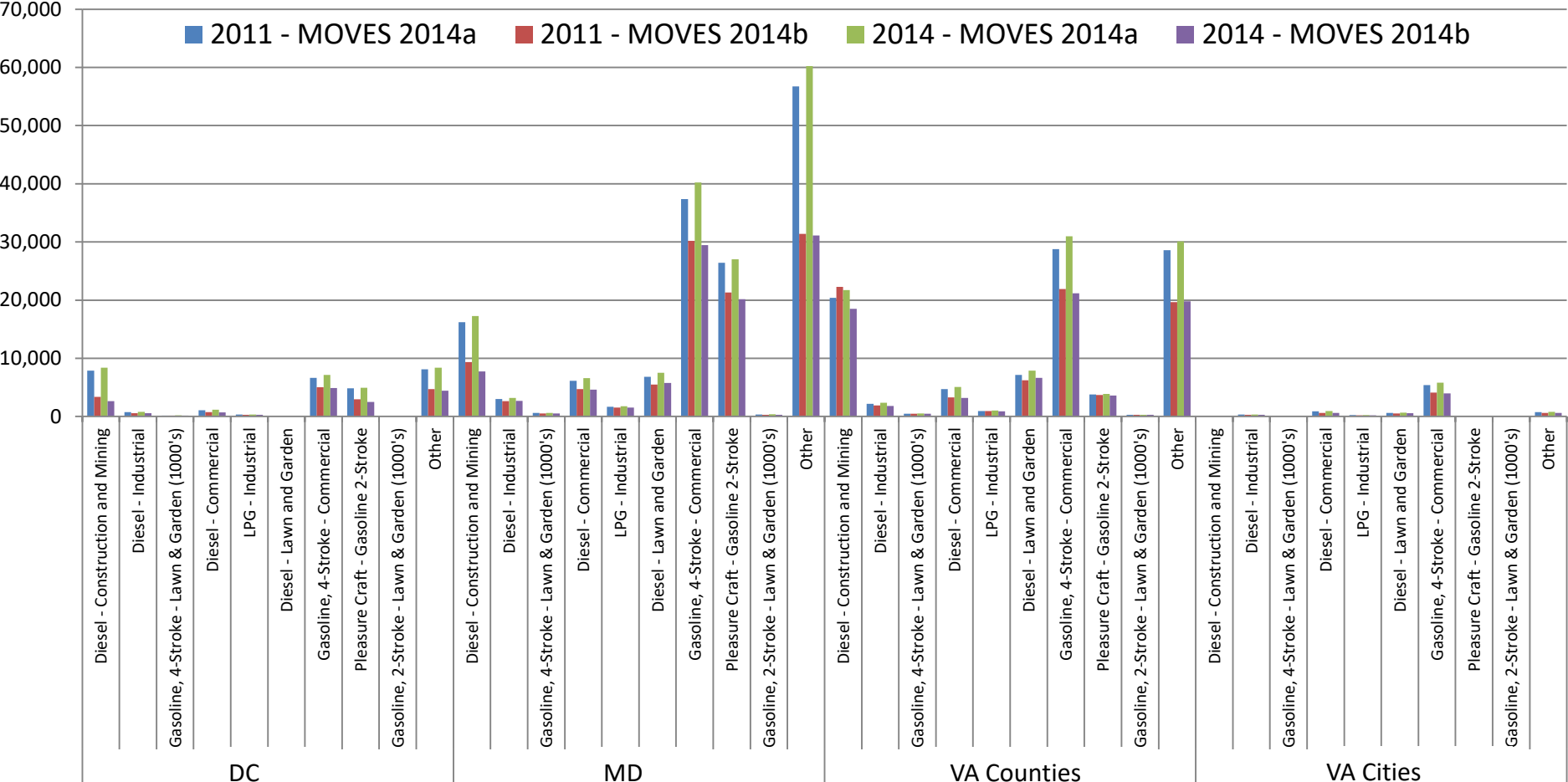
NEI Version	2011	2014
MOVES Version	2014a	2014b
Sectors	Onroad	Nonroad

- 3 pollutants
- Used MD nonroad DB

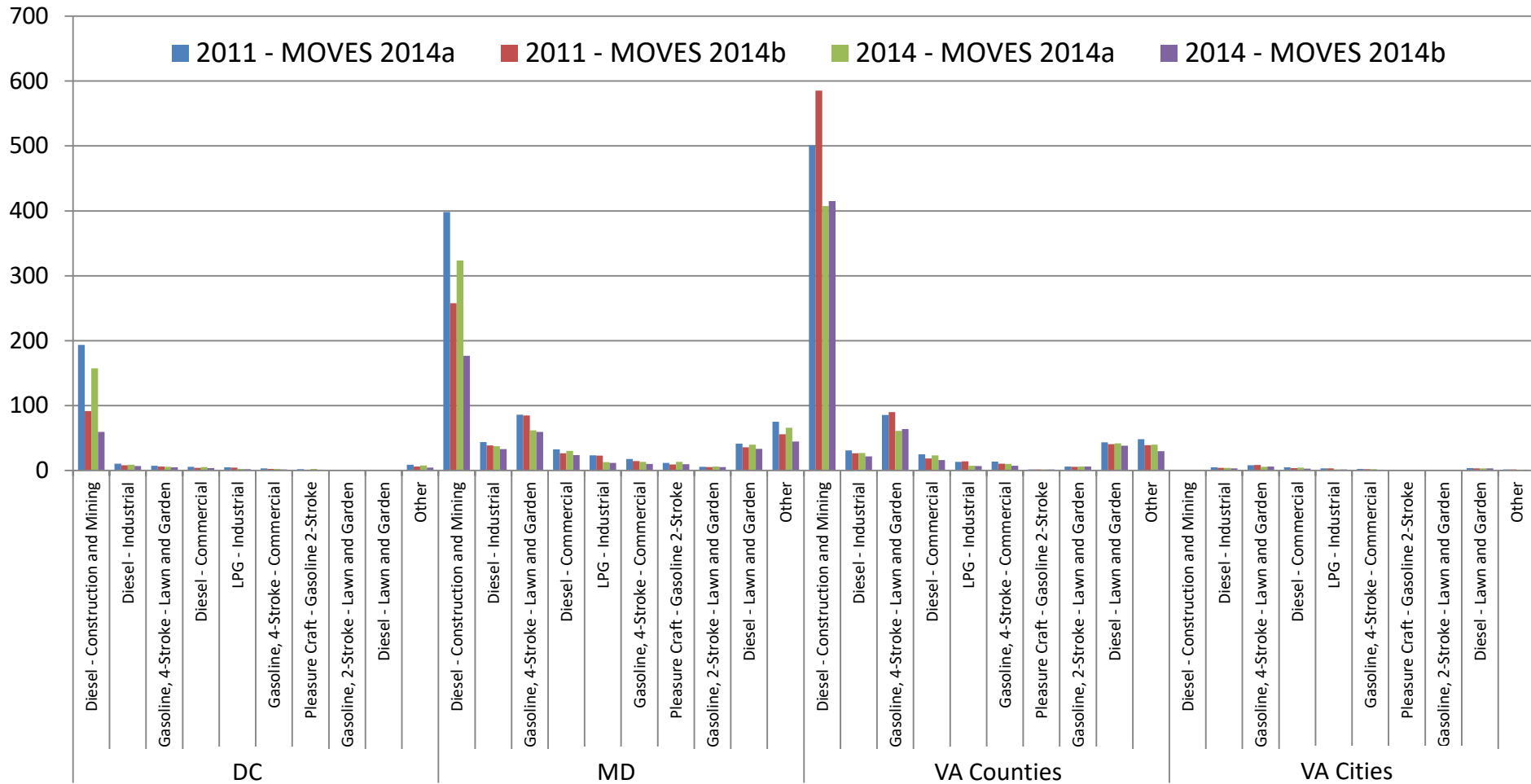


# Populations

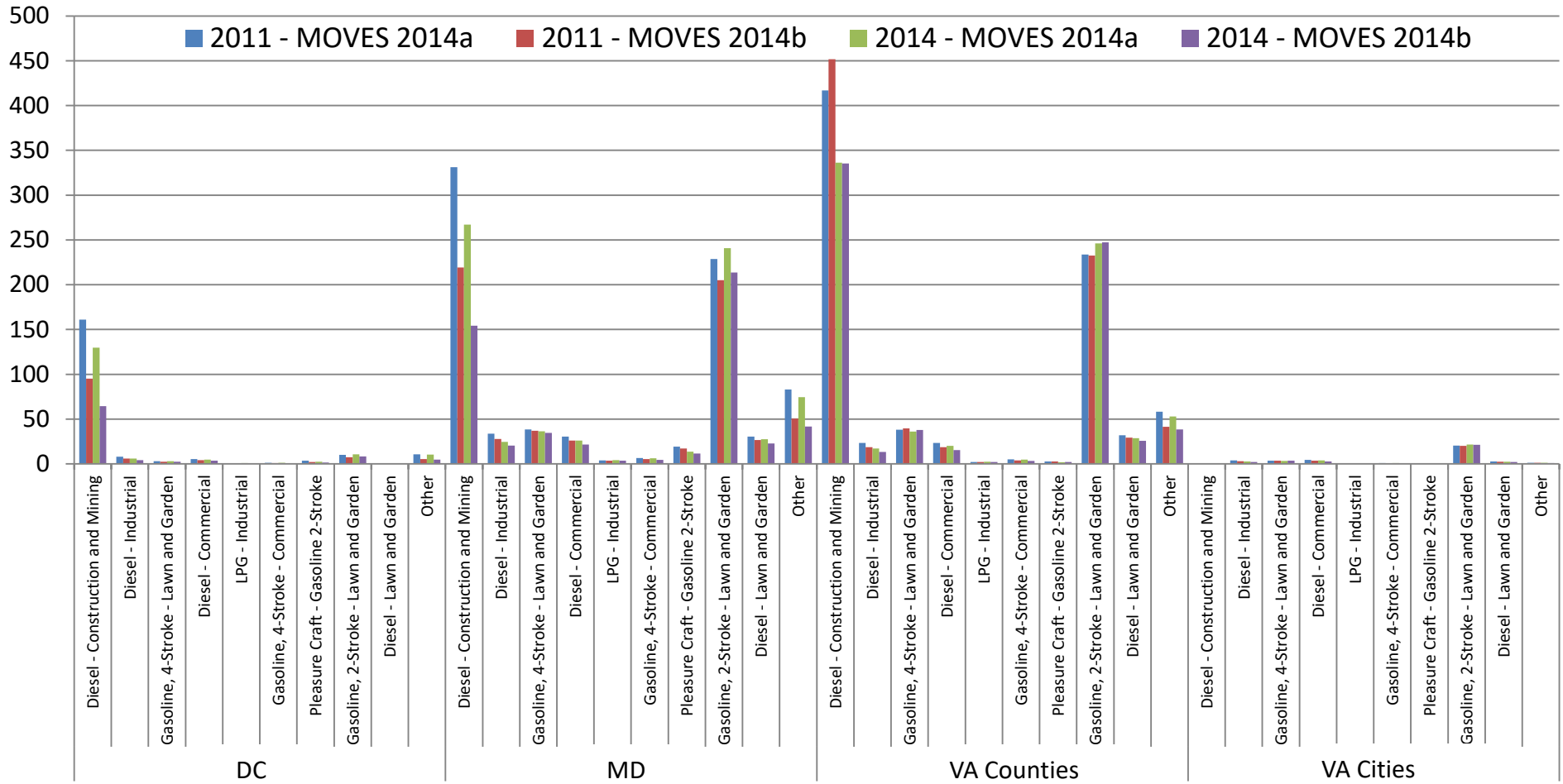
■ 2011 - MOVES 2014a   
 ■ 2011 - MOVES 2014b   
 ■ 2014 - MOVES 2014a   
 ■ 2014 - MOVES 2014b



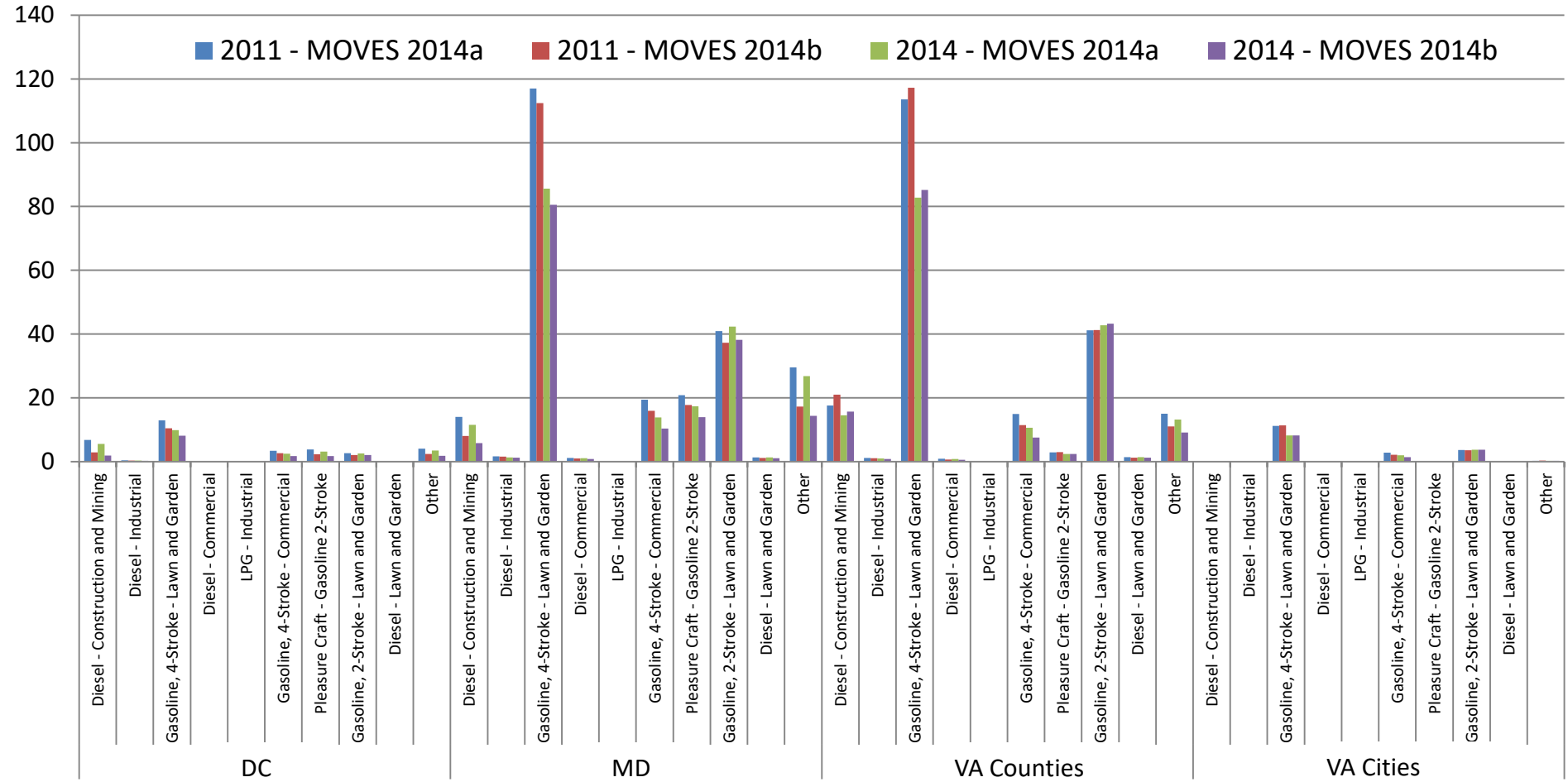
# NO<sub>x</sub> Results



# PM<sub>2.5</sub> Results



# Benzene Results



# Questions

---



[joseph.jakuta@dc.gov](mailto:joseph.jakuta@dc.gov)

