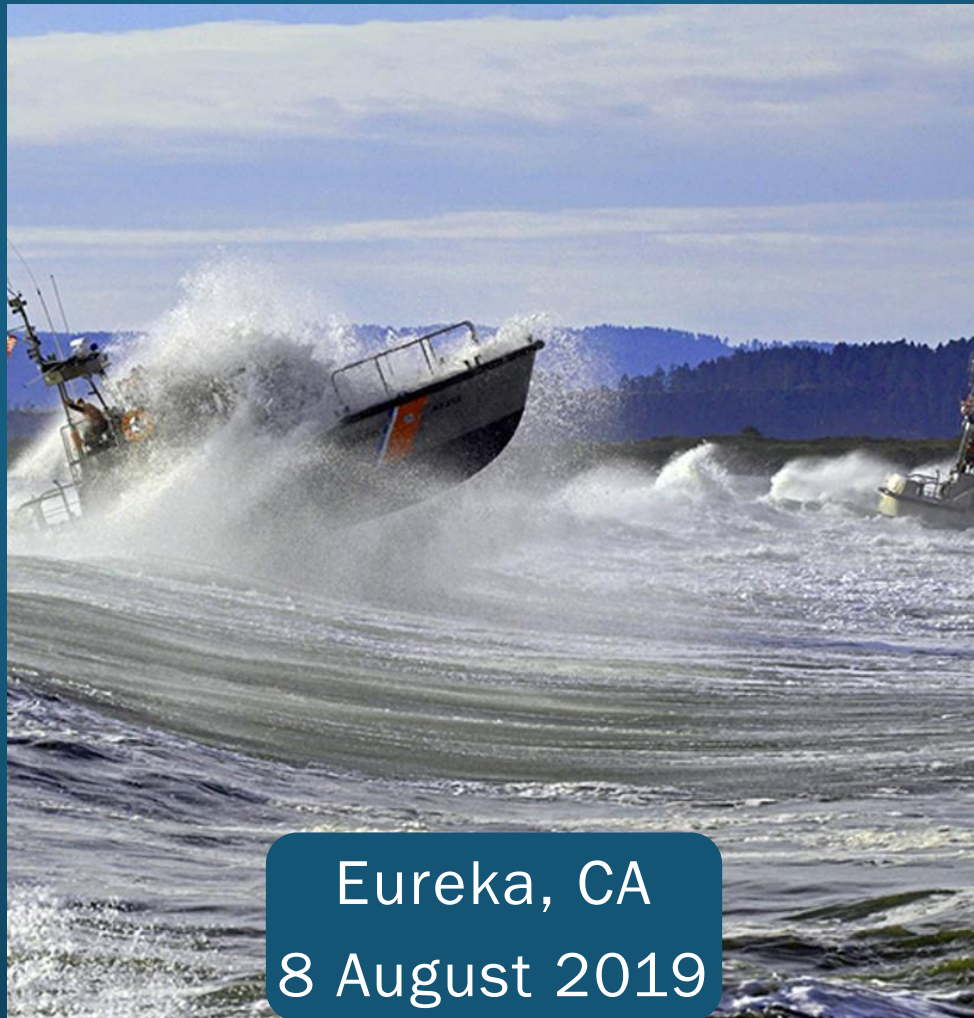


HOODS EXPANSION: INFORMATION WORKSHOP FOR THE CA COASTAL COMMISSION



Eureka, CA
8 August 2019



- Humboldt Harbor Dredging
- Need to expand HOODS capacity
 - EPA Monitoring (2008, 2014)
 - Mounding
 - Expansion Alternatives
- Nearshore Sand Placement Site (NSPS)
- USACE Shoreline monitoring

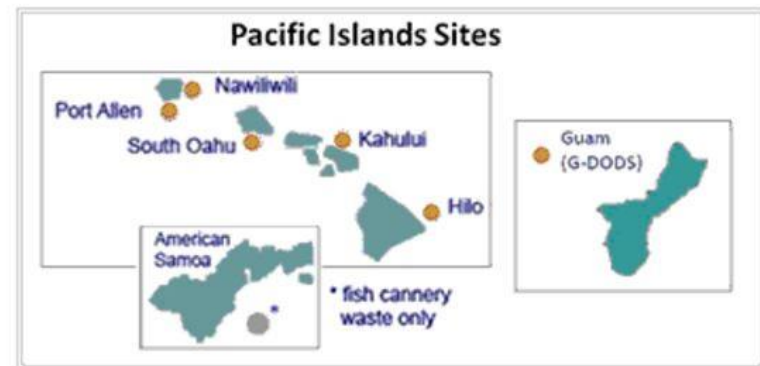


OCEAN DISPOSAL SITES IN EPA REGION 9

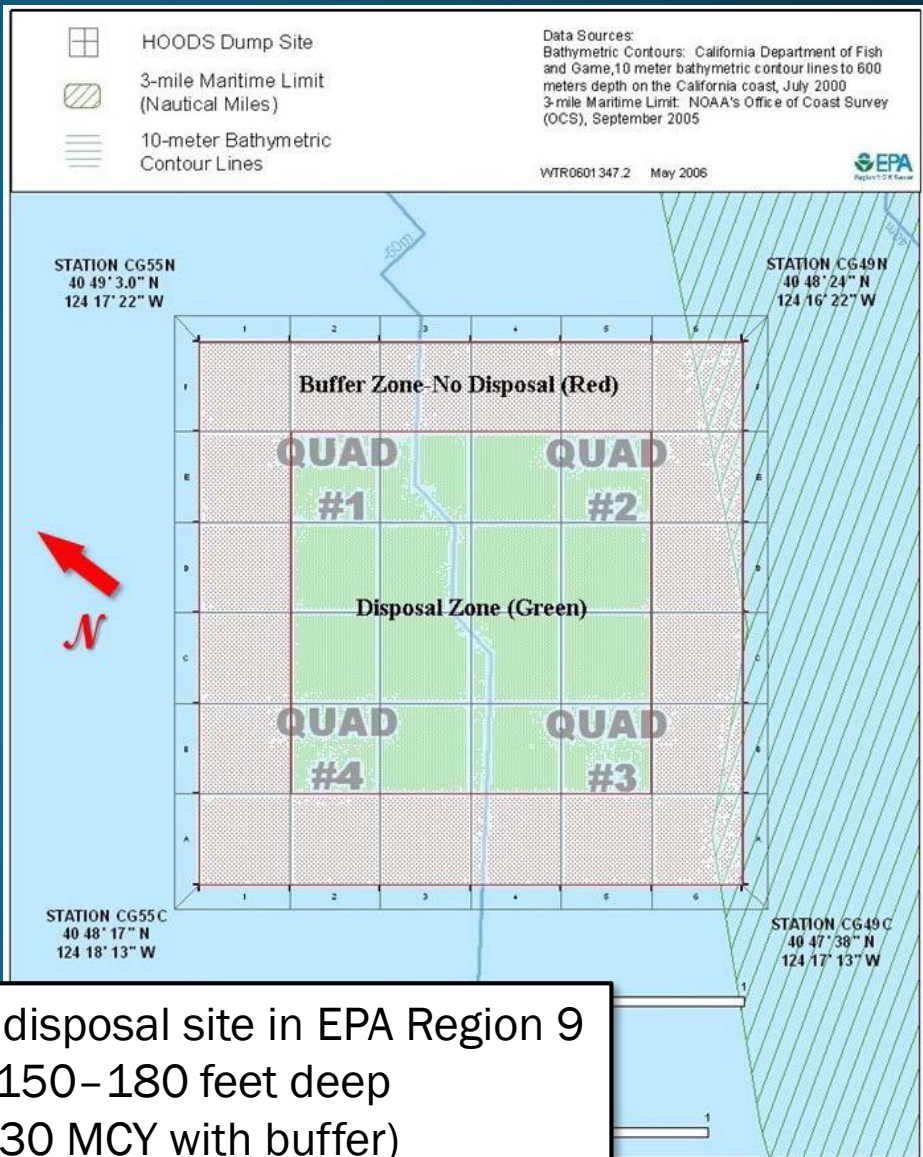
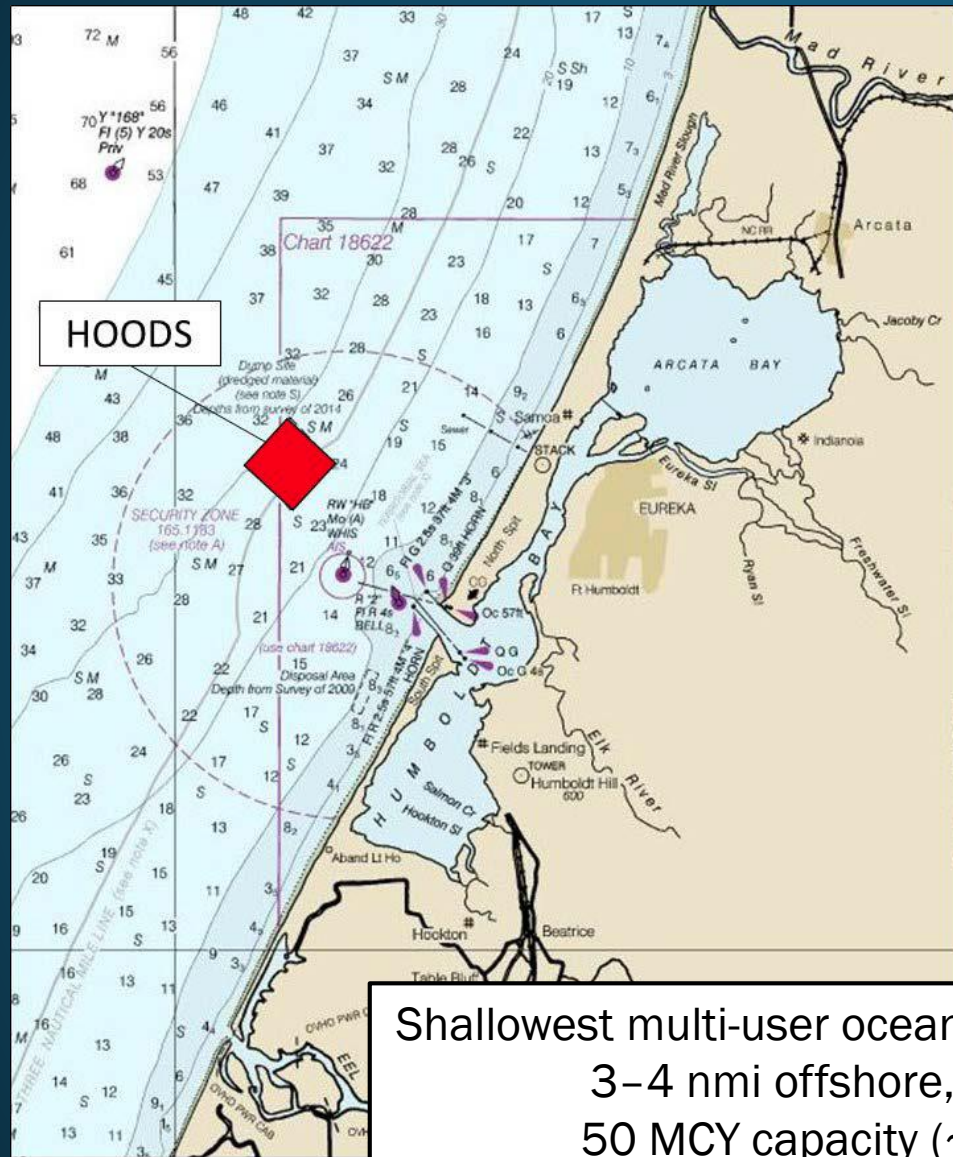
Ocean Disposal Sites in Region 9

There are 12 EPA-designated ocean disposal sites for dredged material in Region 9: six along the California coast, five around the Hawaiian Islands, and the newly-established site west of Guam. Each site is managed according to a Site Management and Monitoring Plan (SMMP). EPA also manages one ocean disposal site for fish processor waste in American Samoa.

- **Guam Deep Ocean Disposal Site (G-DODS)**
 - northwest of Apra Harbor, Guam
- **Humboldt Site (HOODS)**
 - off Eureka, CA
- **San Francisco Deep Ocean Disposal Site (SF-DODS)**
 - off San Francisco, CA
- **San Francisco Channel Bar Site (SF-8)**
 - off San Francisco, CA
- **Los Angeles Site (LA-2)** –
 - off San Pedro, CA
- **Newport Bay Site (LA-3)** –
 - off Newport Beach, CA
- **San Diego Site (LA-5)** –
 - off San Diego, CA
- **Hawaii Sites**
 - South Oahu, off Honolulu, HI
 - Hilo, off Hilo, HI
 - Kahului, off Maui, HI
 - Nawiliwili, off Kauai, HI
 - Port Allen site, Kauai, HI



HOODS AS DESIGNATED IN 1995



Data Sources:
 Bathymetric Contours: California Department of Fish and Game, 10 meter bathymetric contour lines to 600 meters depth on the California coast, July 2000
 3-mile Maritime Limit: NOAA's Office of Coast Survey (OCS), September 2005

WTR0601 347.2 May 2006

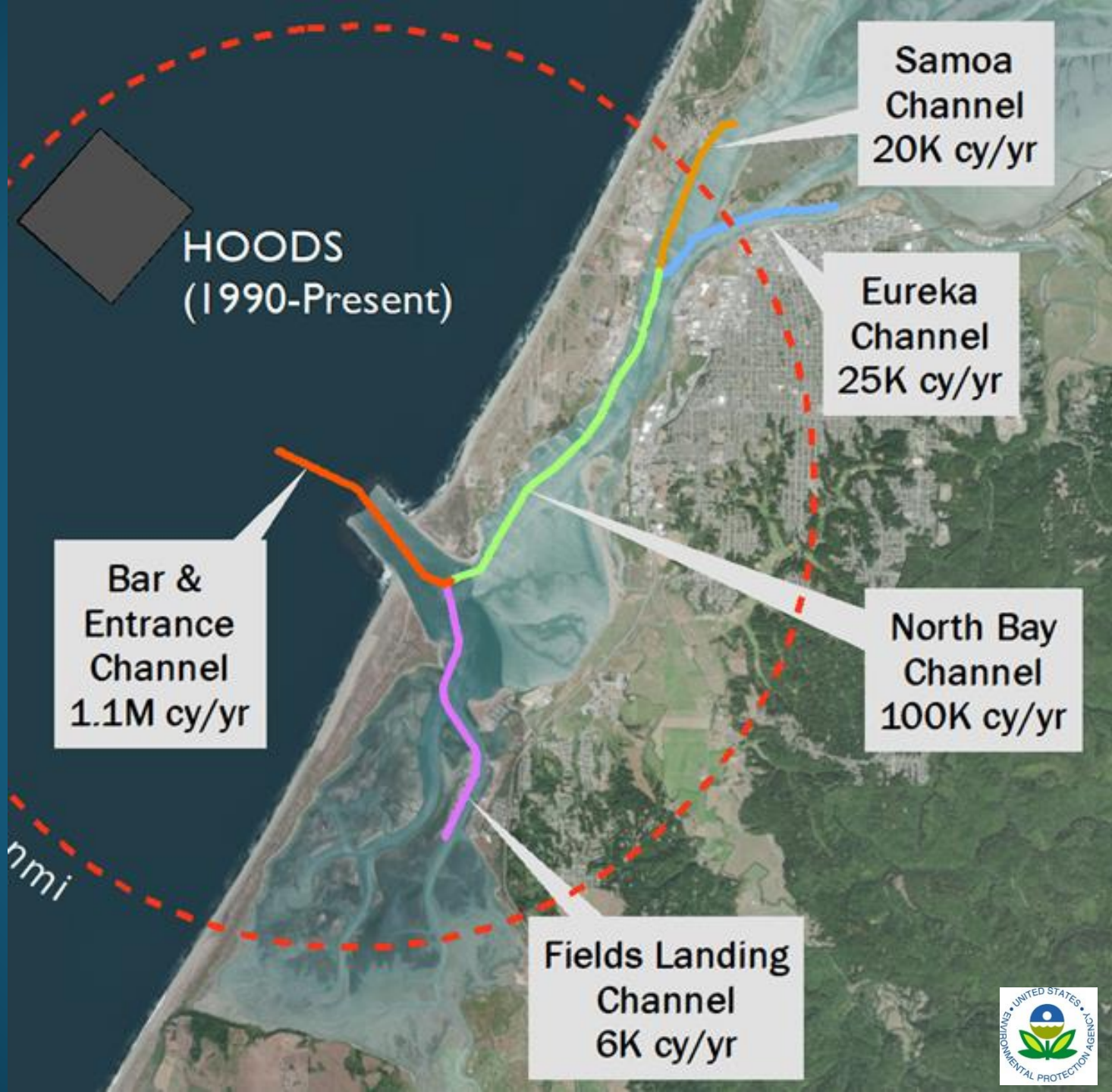


Shallowest multi-user ocean disposal site in EPA Region 9
 3-4 nmi offshore, 150-180 feet deep
 50 MCY capacity (~30 MCY with buffer)
 1 MCY/yr disposal estimate
 Individual disposal cells to manage mounding

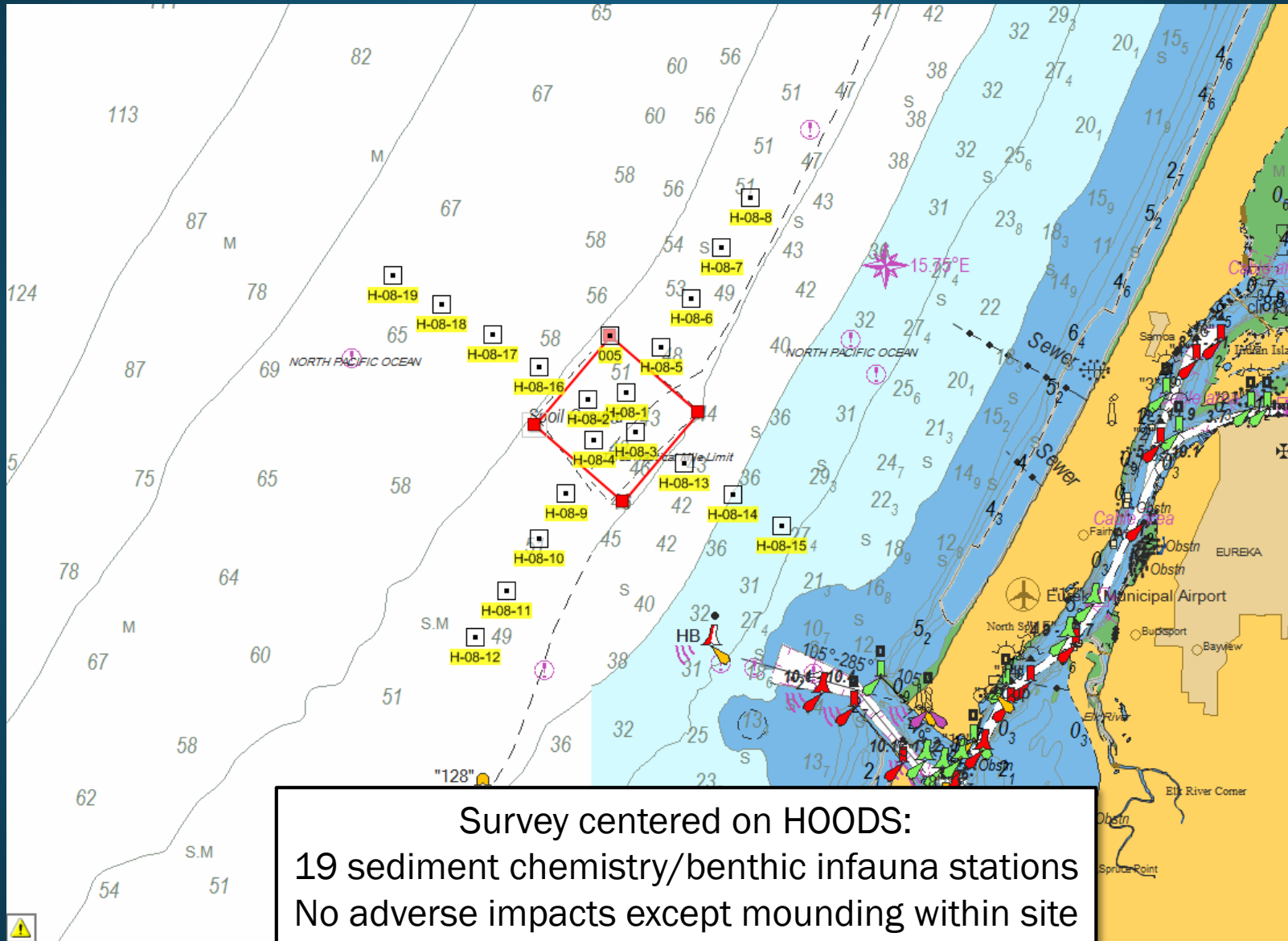


HUMBOLDT HARBOR FEDERAL CHANNELS ANNUAL DREDGE VOLUMES

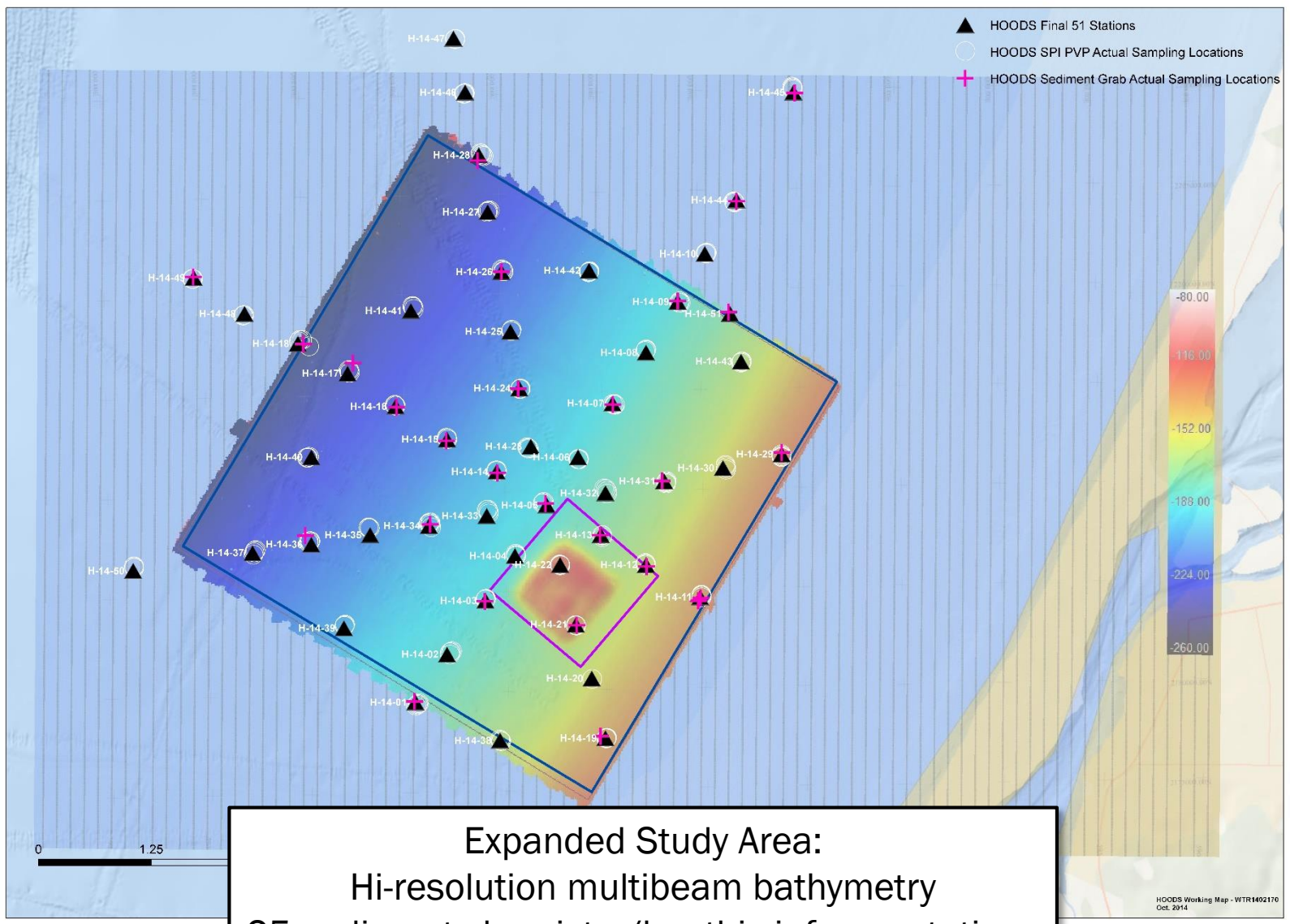
Feb. 2019
backlog is
4 million yd³



EPA MONITORING IN 2008



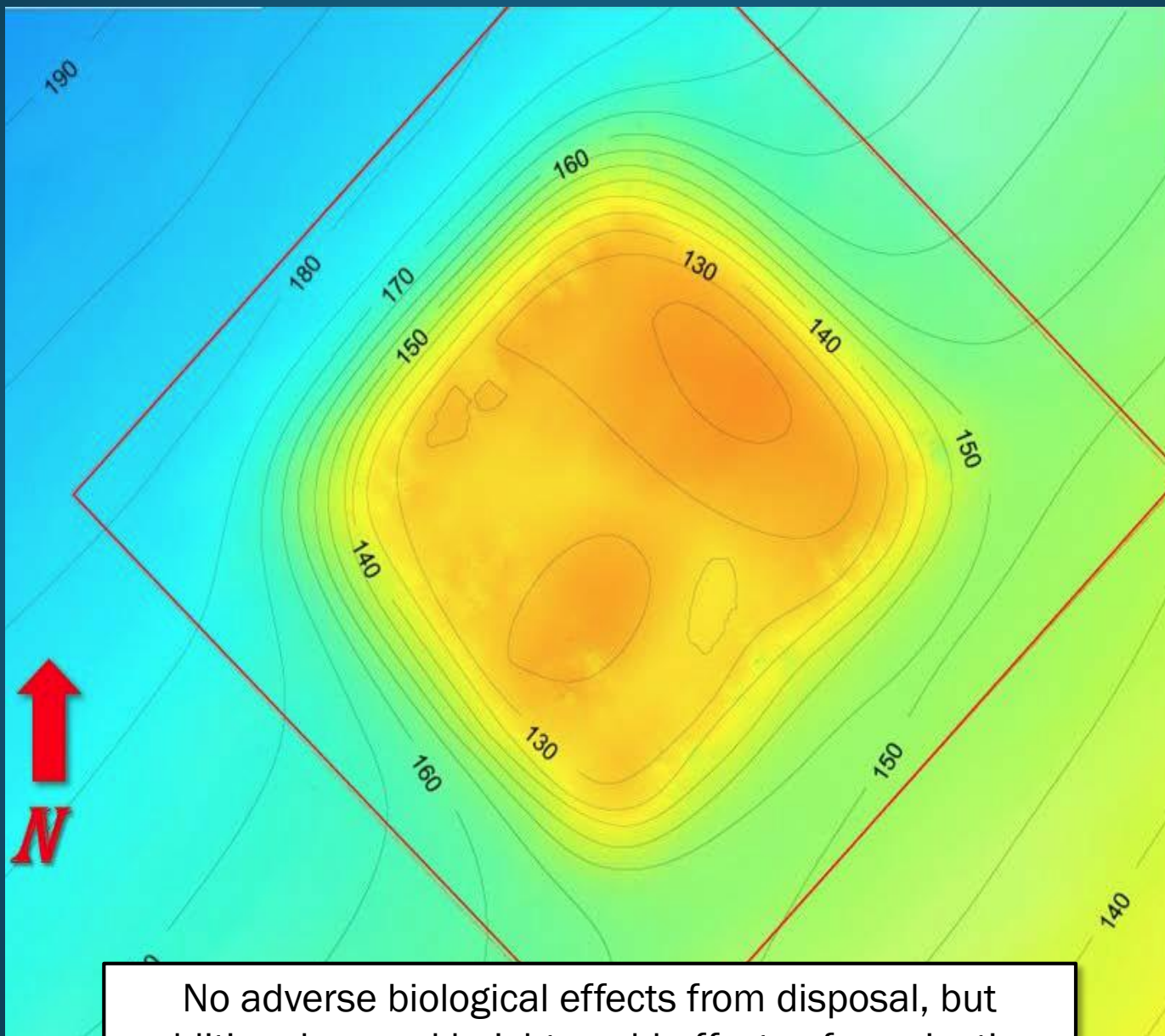
EPA MONITORING IN 2014



Expanded Study Area:
Hi-resolution multibeam bathymetry
25 sediment chemistry/benthic infauna stations
51 SPI and PV imagery stations



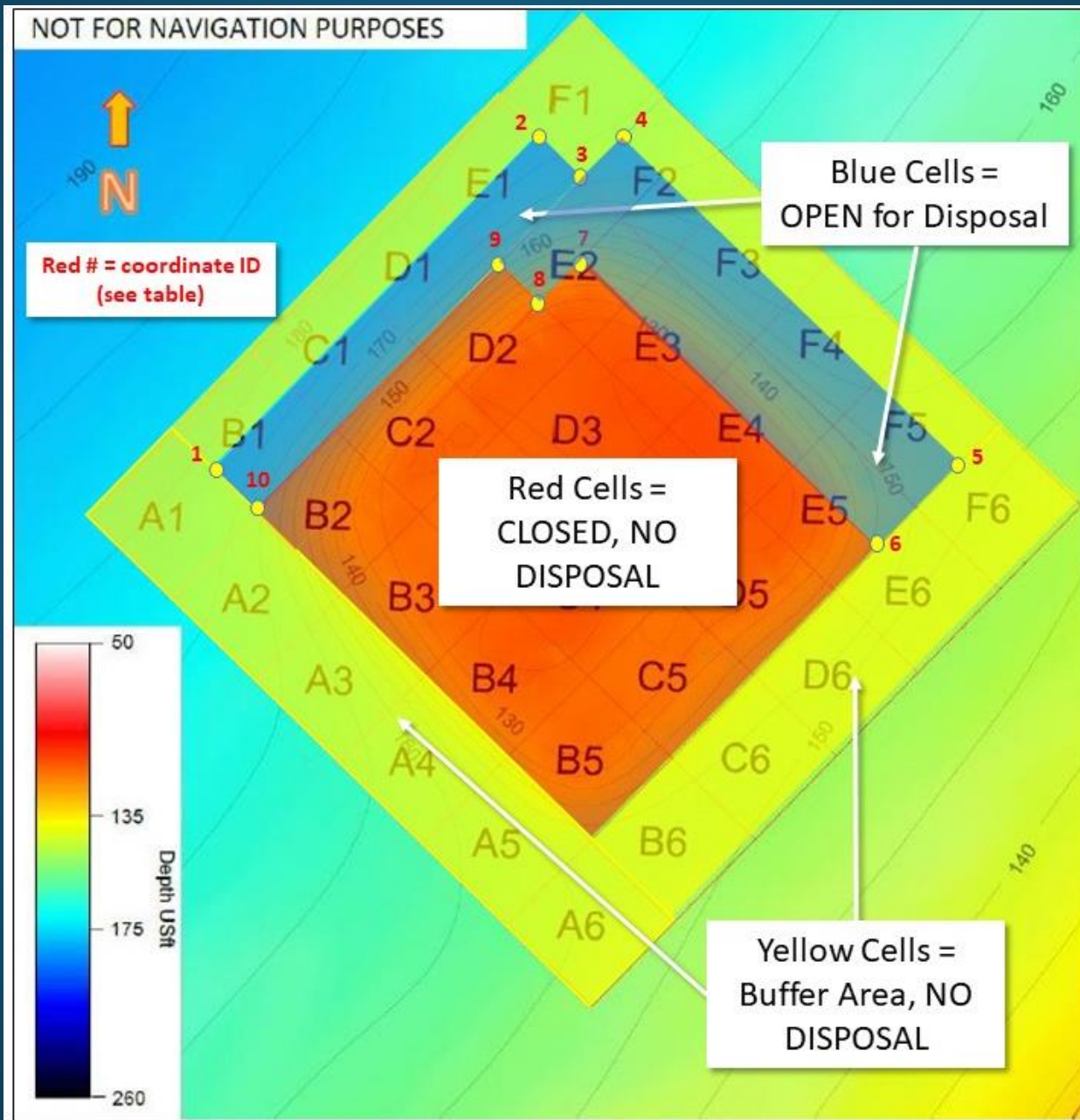
2014 MONITORING FINDINGS



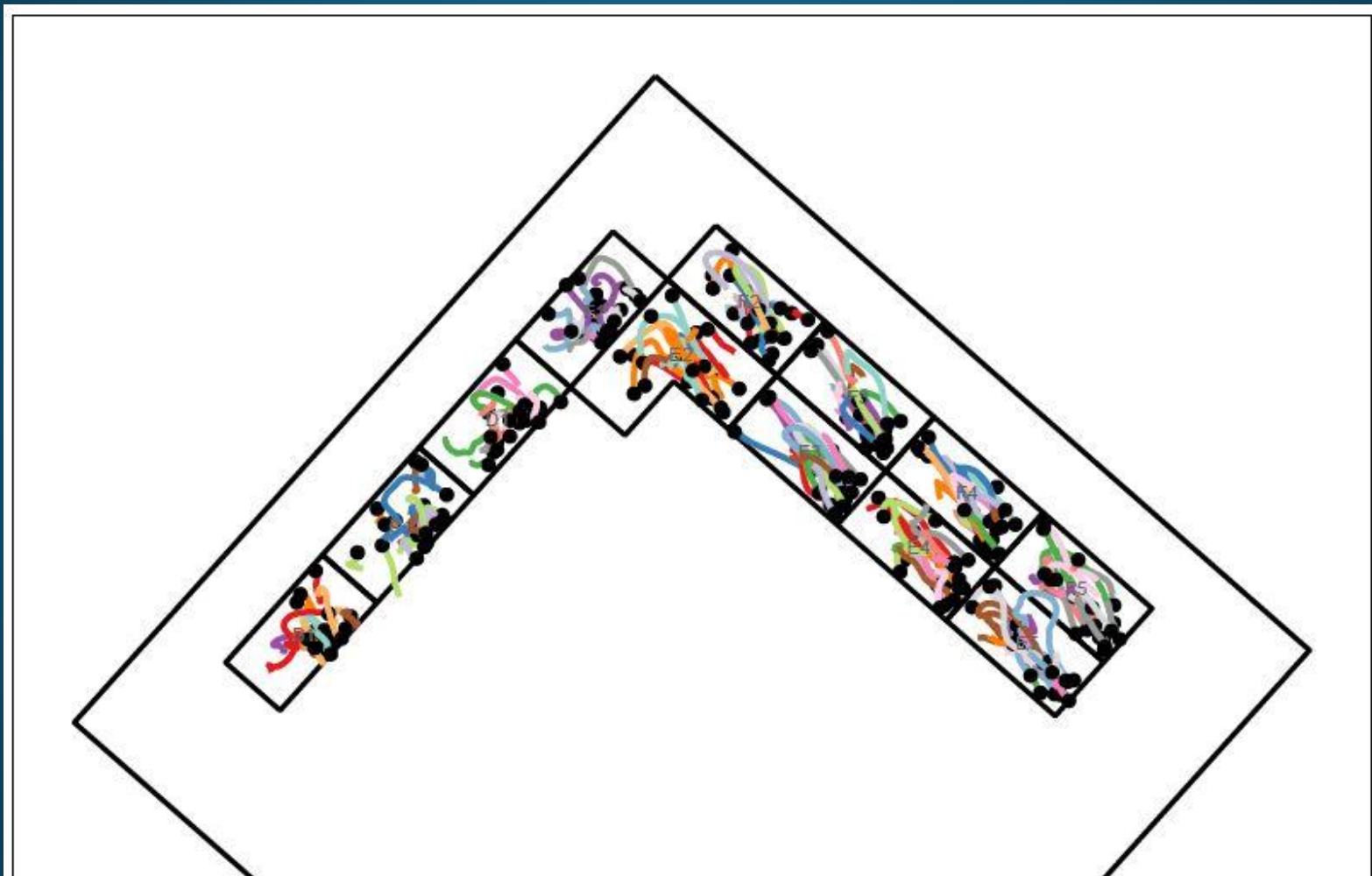
No adverse biological effects from disposal, but additional mound height could affect safe navigation



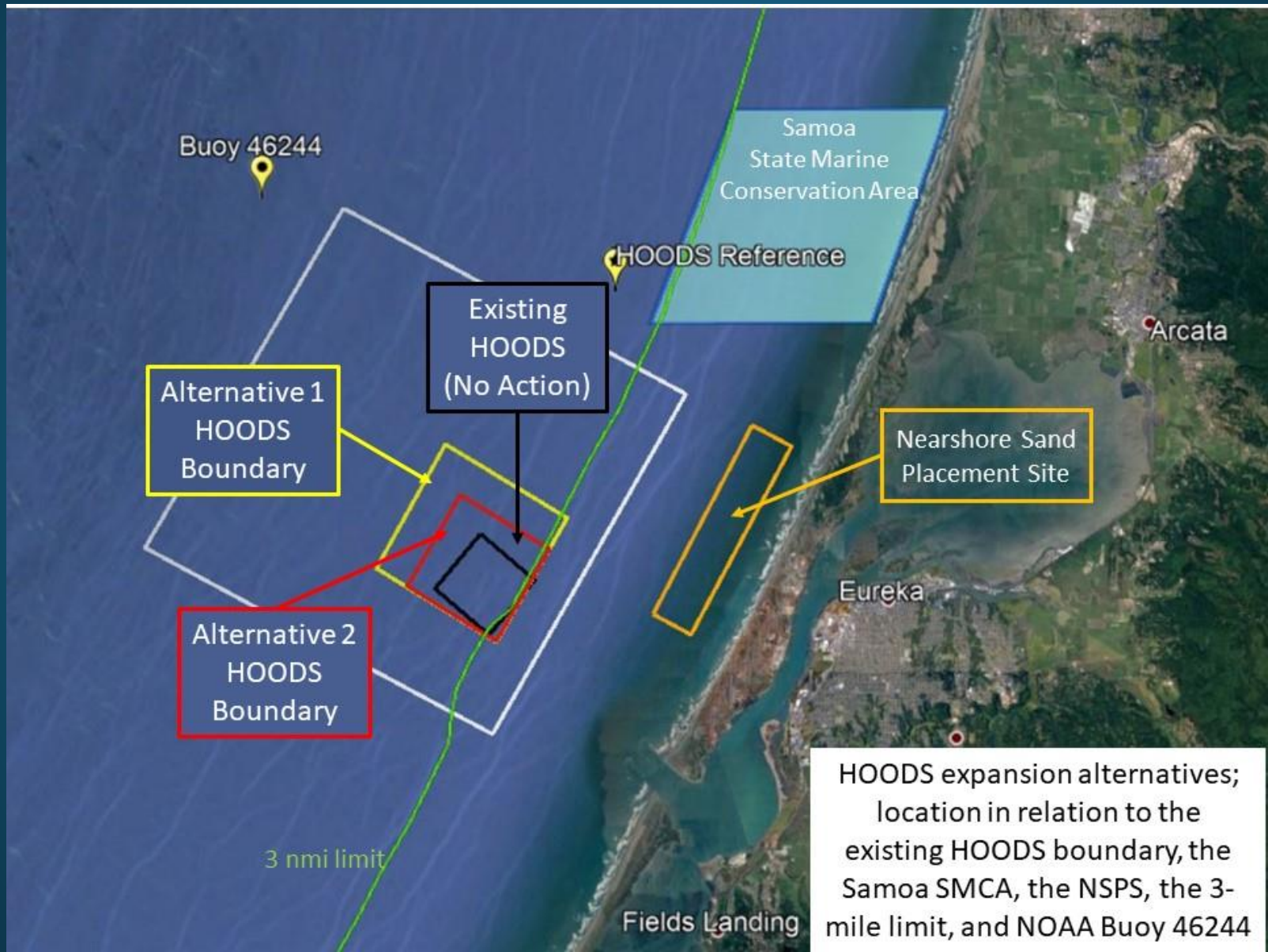
MANAGING MOUNDING AT HOODS



MANAGING MOUNDING AT HOODS: ACTIVE CELLS AS OF 2019



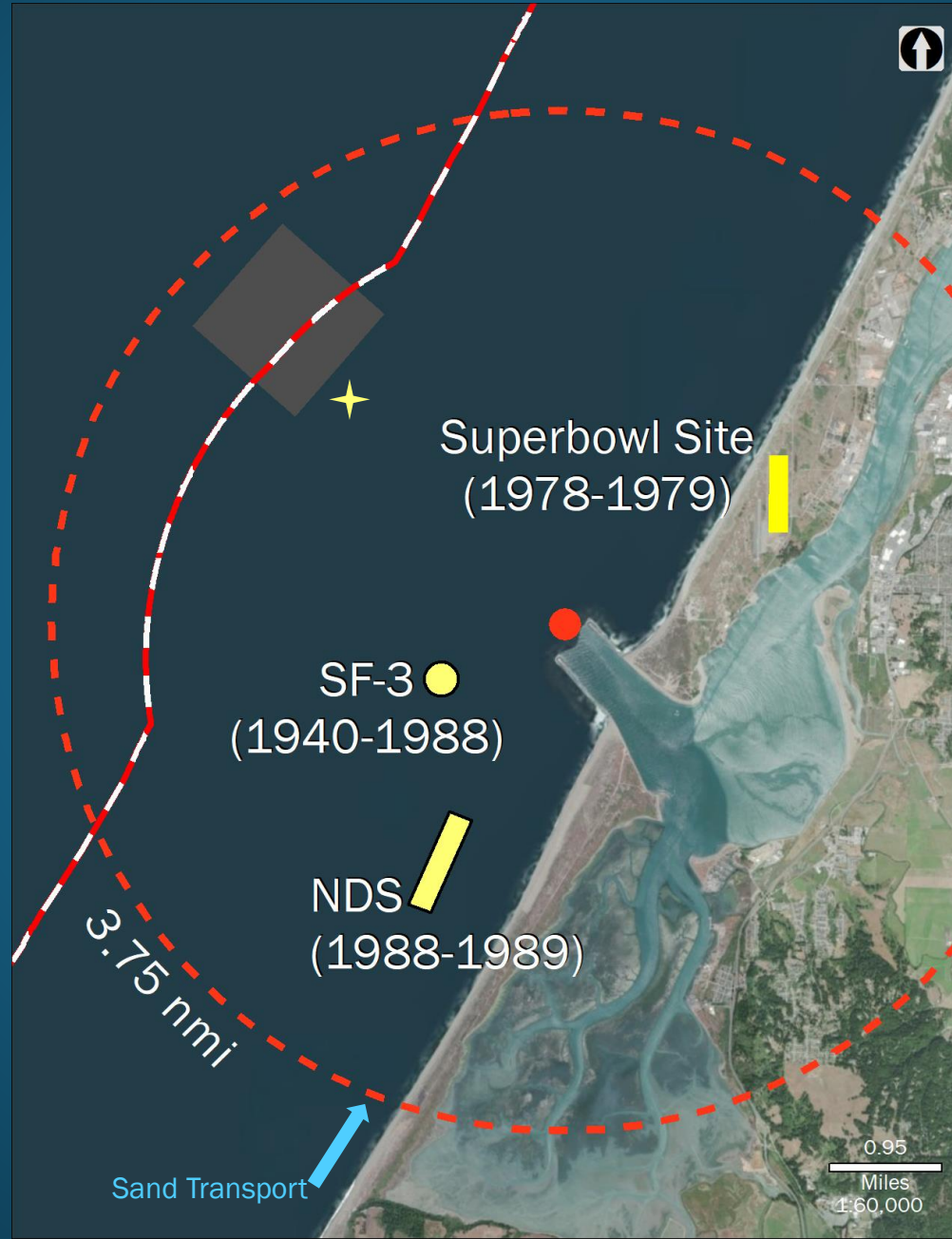
HOODS EXPANSION ALTERNATIVES



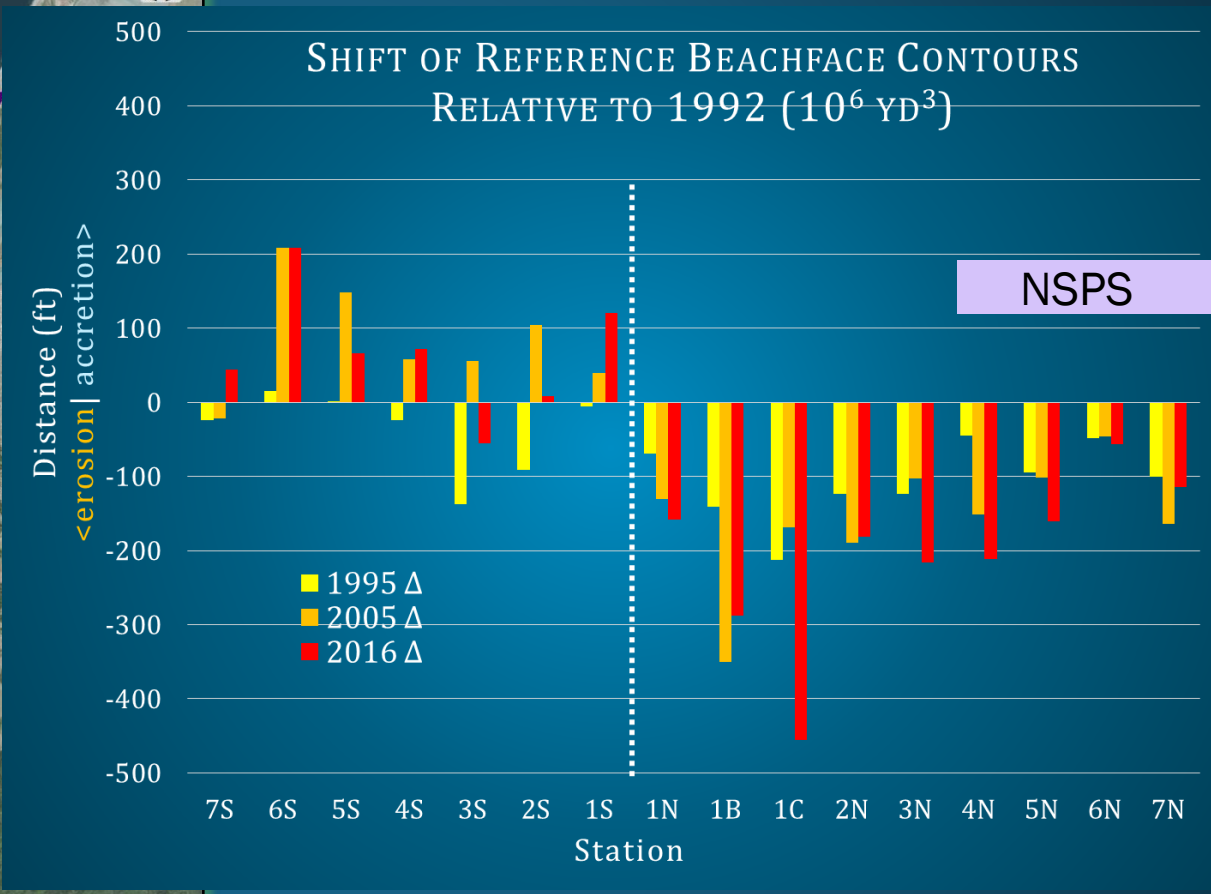
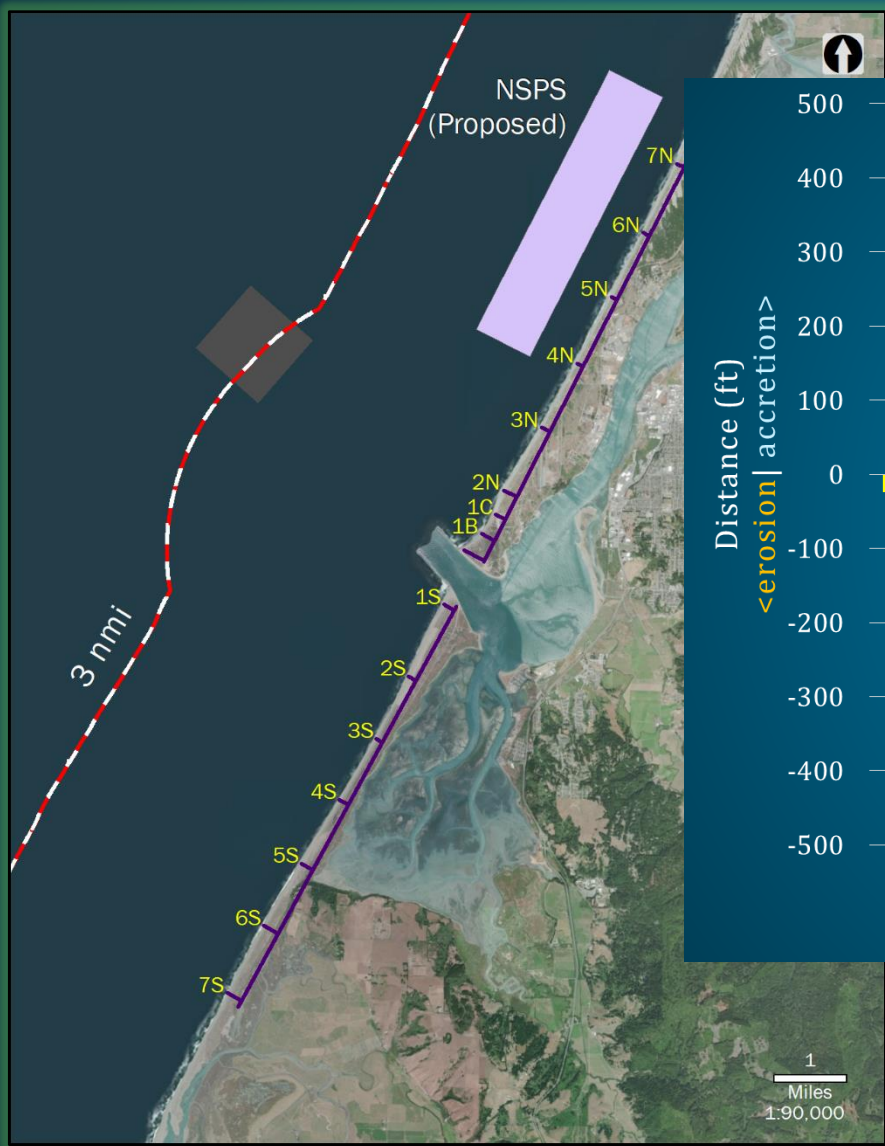
HOODS expansion alternatives; location in relation to the existing HOODS boundary, the Samoa SMCA, the NSPS, the 3-mile limit, and NOAA Buoy 46244



DISPOSAL BEFORE HOODS



HUMBOLDT HARBOR USACE SHORELINE MONITORING



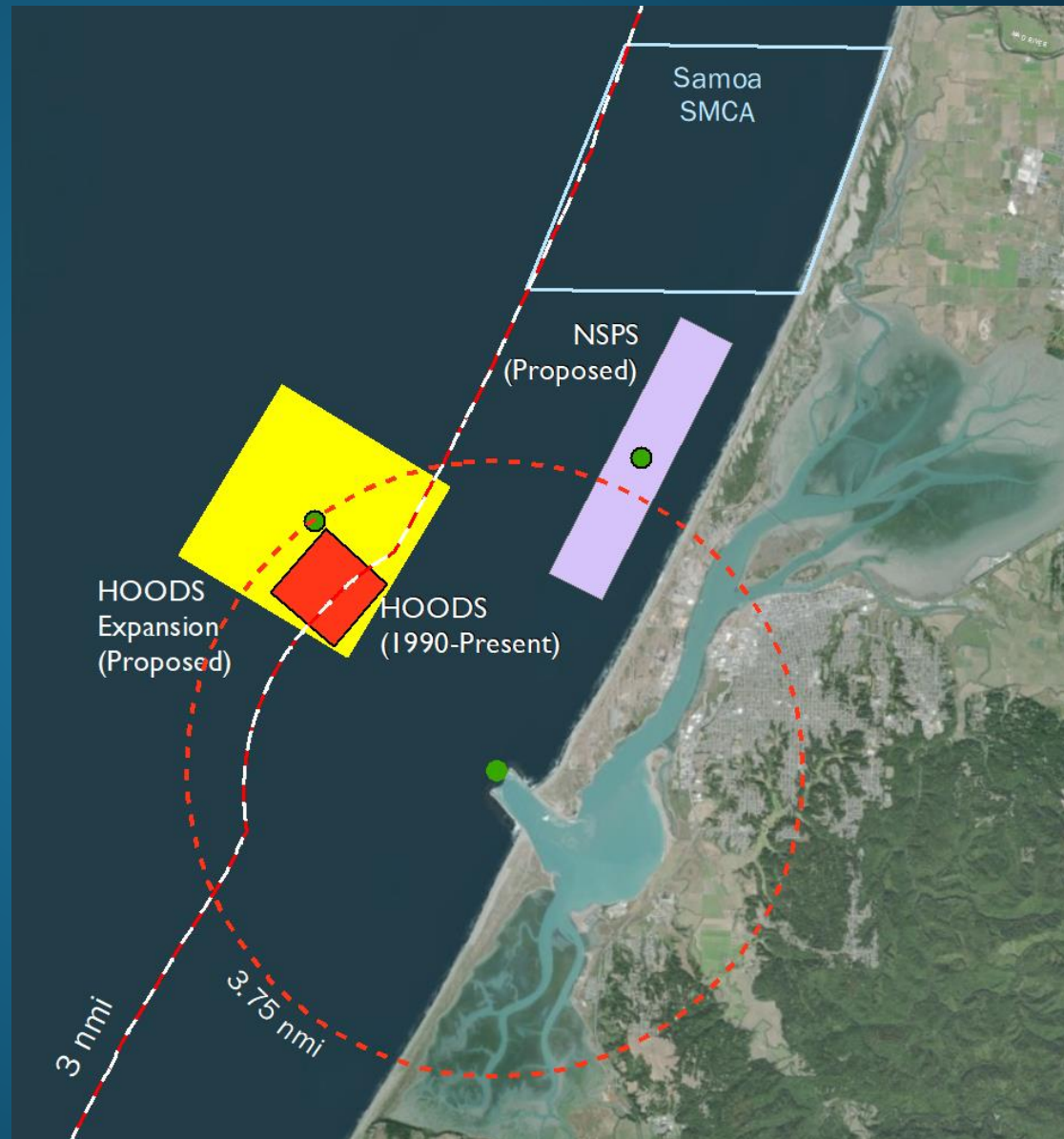
- The Reference Contour is ~11 ft above MLLW:
- rectangle shows the approximate longshore location of the NSPS off the eroding North Spit



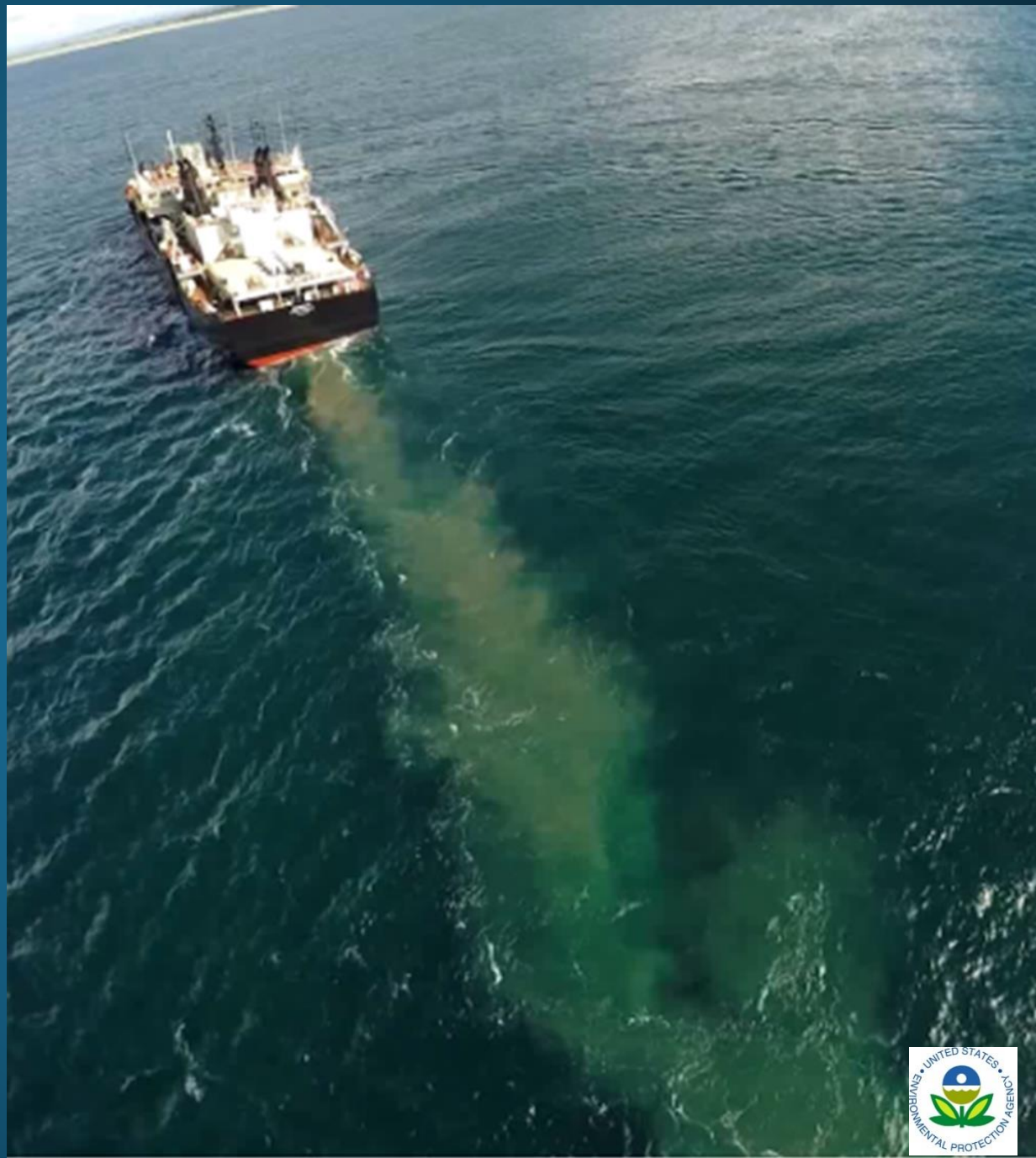
NEARSHORE SAND PLACEMENT SITE

NEARSHORE SITE

- Length: 20,000 ft
- Width: 4,000 ft
- Inner Depth: 25 ft
- Outer Depth: 80 ft
- Minimum Operating Depth (*Essayons*): 40 ft



THIN-LAYER
PLACEMENT
MINIMIZES
NEGATIVE IMPACTS
TO NEARSHORE
FISHERIES



HOODS Expansion: Next Steps

This week: Public Scoping Meetings in Eureka

Early 2020: Publish EA and Proposed Rule
Public Comment Period & Public Meeting(s)

Spring 2020: Response to comments
Coastal Commission Public Hearing

Summer 2020: Publish Final Rule
Use of Expanded HOODS

Future: Monitor Nearshore Sand Placement Site?

For more information, contact
Brian Ross, EPA Dredging & Sediment Management Team
ross.brian@epa.gov, 415-972-3475





QUESTIONS?