

# Great Lakes Legacy Act

## *Generating nonfederal cost-share*

2019 Areas of Concern Conference

Steve Galarneau, WI DNR



# Presentation Overview

- Need for Non-federal Sponsors
- Milwaukee Estuary AOC-Wide Approach
- Potential Funding Sources
- NFS Specific contributions
- Phased approach
- Communication



Wisconsin Historical Society, 1836, Map of the Milwaukee Bay Showing the Site of the Proposed Harbor, Image ID 99154. Viewed online at <https://www.wisconsinhistory.org/Records/Image/IM99154>

# Milwaukee Estuary AOC

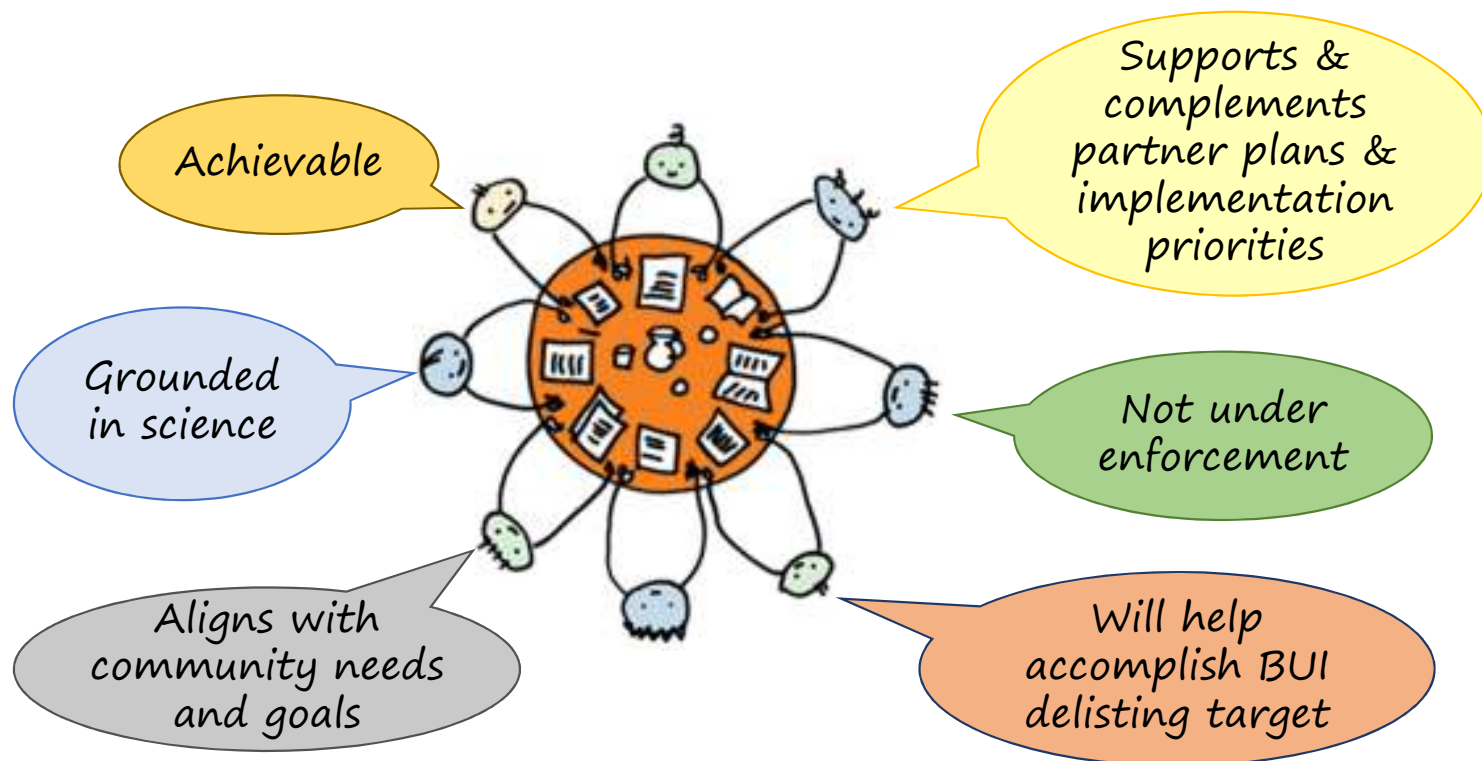


MILWAUKEE.

Wisconsin Historical Society, 1881, Bird's-Eye View of Milwaukee, Image ID 105345. Viewed online at <https://www.wisconsinhistory.org/Records/Image/IM105345>



# Identifying Management Actions with External Partners





# Partner GLLA/GLRI Project Success

- MKE AOC
  - Kinnickinnic River
  - Lincoln Park Phases I & II
- Lower Menominee River AOC
- Sheboygan AOC
  - Campmarina
  - GLLA
  - Strategic Navigational Dredging



# Non-federal sponsors

- City of Milwaukee
  - Redevelopment Authority
  - Port Milwaukee
- Wisconsin Department of Natural Resources
- Milwaukee County
- Milwaukee Metropolitan Sewerage District
- We Energies



# MKE AOC Wide Approach

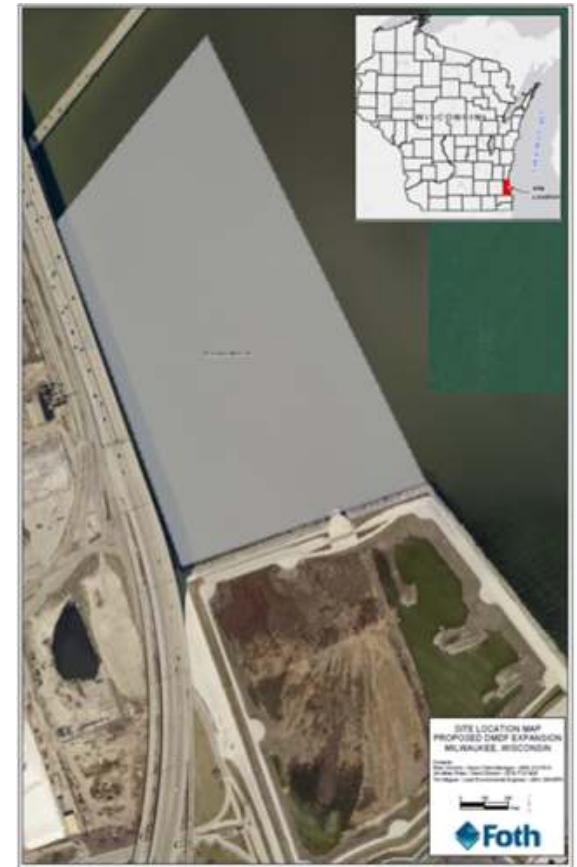
- Milwaukee as a priority AOC
- We want to get a lot done in a short timeframe
- A large volume of sediment to remediate - over a MCY
- Necessitates a holistic strategy
- Embrace the cost sharing nature of the GLLA program
- Leverage non-federal sponsor funding between project areas and rivers and maximize flexibility
- Build a DMMF for disposal adjacent to the existing CDF
- Accelerate cleanup of the MKE AOC!



Wisconsin Historical Society, 1902, US War Dept. Corps of Engineers, Chart of Milwaukee Harbor, Image ID 114566. Viewed online at <https://www.wisconsinhistory.org/Records/Image/IM114566>

# DMMF Approach

- To be provided by NFS, no federal funds
- Key to a cost effective approach
- Adjacent to the existing CDF
- We Energies performed investigation of materials in the existing CDF for potentially reusing materials
  - Not viable
- We Energies acquired a state grant for DMMF Design
- A Lakebed lease for new DMMF is in-place
- Port Milwaukee
  - Long-term owner and responsible for maintenance
  - Would provide space for Port activities
- The NFS are working on performance standards and funding
- Would serve all three rivers and the harbors





# NFS Potential Contributions

## WEC Energy Group

- Design and remediation of NAPL in M&M OU2
- Capping sediments within the Solvay Car Ferry Area
- Design of an extension of the Milwaukee Confined Disposal Facility as in-kind (Harbor Assistance Program Grant)
- Overmatched funds from the M&M RI/FFS project agreement.
- An agreement with Port Milwaukee and the City for existing CDF space.



# NFS Potential Contributions – Milwaukee Metropolitan Sewerage District

- MMSD Project - PCB Remediation and Sewer Rehabilitation Project
  - Primary Source: former Milwaukee Die Cast Company
  - Approximately 430 cubic yards (820 tons) of sediment in MMSD sewer with PCB contaminants



**Milwaukee Metropolitan Sewerage District**

# NFS Contributions

## Wisconsin Department of Natural Resources

- Contaminated Sediment Bonding
- Execution of the GLRI site characterization grant



# NFS Potential Contributions City of Milwaukee

- Sheet Pile As-builts
- Utility Locates
- Existing CDF Space
- Long term O&M of a new DMMF





# NFS Potential Contributions

## City of Milwaukee - Grand Trunk Wetland

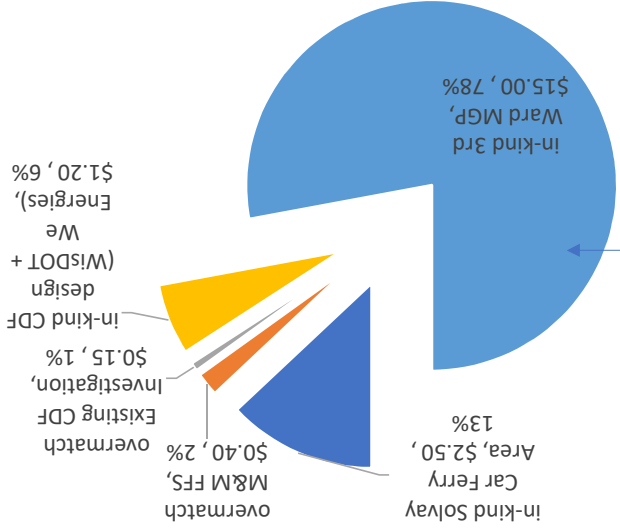
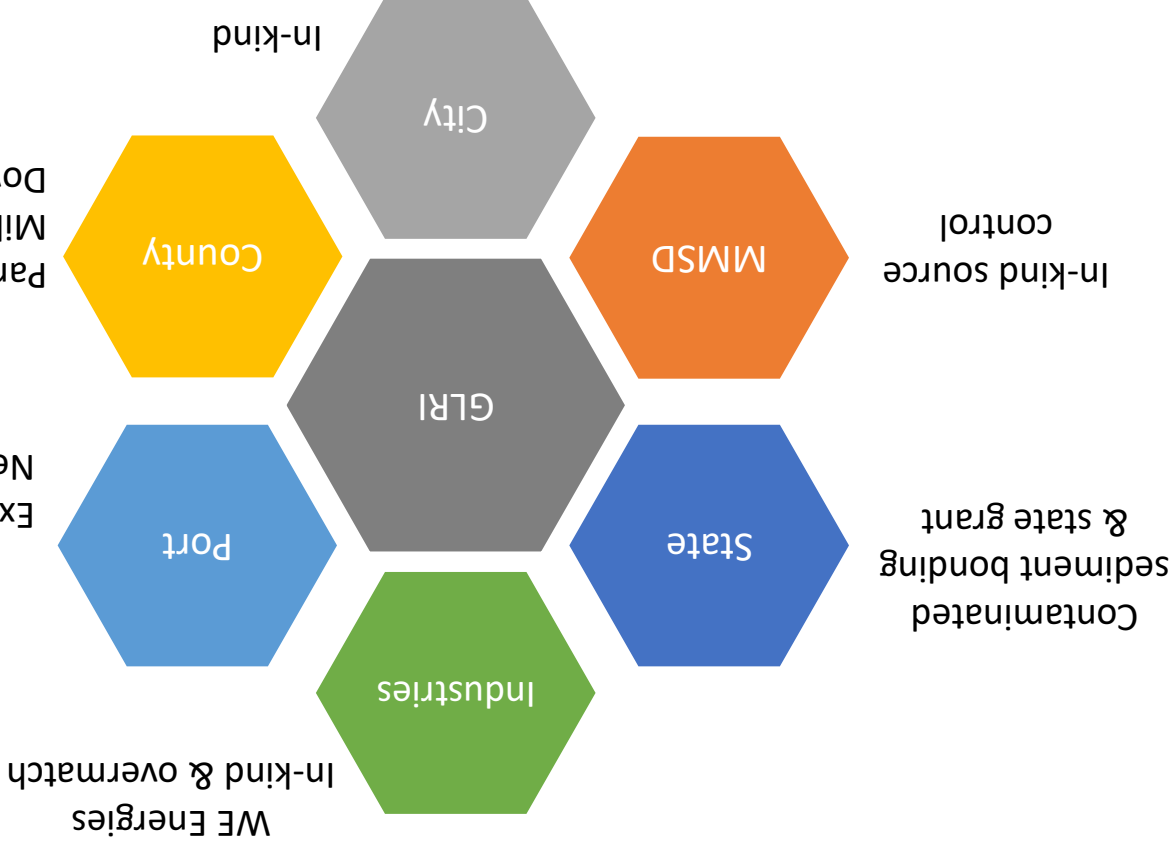


## Existing Conditions



## Proposal

# Embracing cost sharing



# Potential Non-Federal Funding Sources

Source(s) or Entities	Type	Area or Item	Amount, in millions
City of Milwaukee	in-kind	MRD - Sheet Pile As-Built	TBD
City of Milwaukee	in-kind	Sewer Assessment (Grand Trunk)	TBD
City of Milwaukee	in-kind	Sewer PCB cleanout (Grand Trunk)	TBD
City of Milwaukee	in-kind	Utility locates	TBD
City of Milwaukee	in-kind	Erie Street Plaza Sheetpile Repair	TBD
DNR	cash	Sediment Bonding	TBD
Milwaukee County	in-kind	Park Access	TBD
MMSD	in-kind	Sewer PCB Clean Out (Basin H)	\$6.2
MMSD	in-kind	Project W20028	TBD
Various	in-kind	Prot-CDF	TBD
Various	cash	TMDL P-trading	TBD
We Energies	in-kind	Solvay Car Ferry Area	\$2.5
We Energies	overmatch	M&M FFS	\$0.40
We Energies	overmatch	Existing CDF Investigation	\$0.15
We Energies	in-kind	CDF design (WisDOT + We Energies)	\$1.20
We Energies	in-kind	3rd Ward MGP	\$15.0
Total			\$25.5

# NFS Contribution Milwaukee County

- Milwaukee River Downstream - Park Access



Wisconsin Historical Society, 1910, Lake Park Shoreline, Image ID 53767. Viewed online at <https://www.wisconsinhistory.org/Records/Image/IM153767>



# Closing the Deal

- Communicate common need
- Engage many
- Flexibility – creativity
- Problem-Solving perspective



Questions?

