

Navigable Waters Protection Rule

WOTUS: Territorial Seas and Traditional Navigable Waters



**A tidally-influenced waterbody
like the territorial waters of the
Pacific Ocean off of California**



**A navigable water like the
Mississippi River**



**A water used for interstate commerce
like Lake Winnebago in Wisconsin**

Navigable Waters Protection Rule

WOTUS: Tributaries to Navigable Waters



A perennial tributary like a section of the Boise River in Idaho that contributes surface flow to the Snake River



A snowpack-fed intermittent tributary like Hayes Creek in Colorado that contributes surface flow to the Crystal River



A perennial tributary like the San Marcos River that contributes surface flow to the Guadalupe River

Navigable Waters Protection Rule

WOTUS: Certain Lakes, Ponds, and Impoundments



A lake that contributes surface flow to a traditional navigable water like Lake Bemidji in Minnesota



A pond that contributes surface flow to a traditional navigable water like Christian Pond in Wyoming



An impoundment that contributes surface flow to a traditional navigable water like Hawks Nest Lake in West Virginia

Navigable Waters Protection Rule

WOTUS: Adjacent Wetlands



Wetlands that abut a traditional navigable water like these near Ram Island in Massachusetts



Wetlands with manmade structures that allow surface connection like these in the Mississippi River Delta region of Louisiana



Wetlands that are adjacent to a traditional navigable water like these in Wyoming next to the Snake River

Navigable Waters Protection Rule

Not WOTUS



Dry washes and ephemeral streams



Many farm ditches



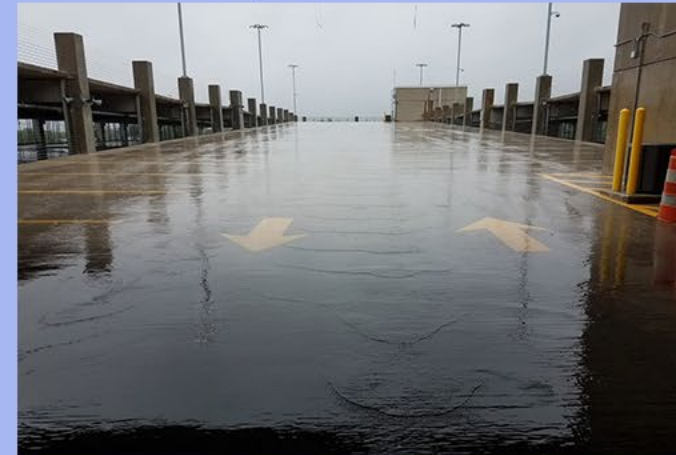
Many roadside ditches



Isolated wetlands



**Farm and stock watering ponds
constructed in upland**



Stormwater runoff