

# No Car? No Problem.

Improving walkability in San Diego, California



## Project Summary

**Community:** San Diego, California

**Technical Assistance:** Site Design

**Former Use:** Deteriorating neighborhood infrastructure

**Future Use:** Walkable Streets

The Diamond Neighborhoods in Southeastern San Diego are economically disadvantaged, and blighted conditions challenge the urban landscape. However, strong community engagement and education efforts have led to renewed neighborhood interest and reinvestment.

The Jacobs Center for Neighborhood Innovation (JCNI) is a local nonprofit that is developing approximately 40 acres along Market Street and Euclid Avenue in the neighborhoods, including a mix of commercial use and affordable housing. The community would like to address that area's existing infrastructure deficits through a Community Facilities District, which will raise funds to address infrastructure needs and improve the environment.

### The Community's Challenge

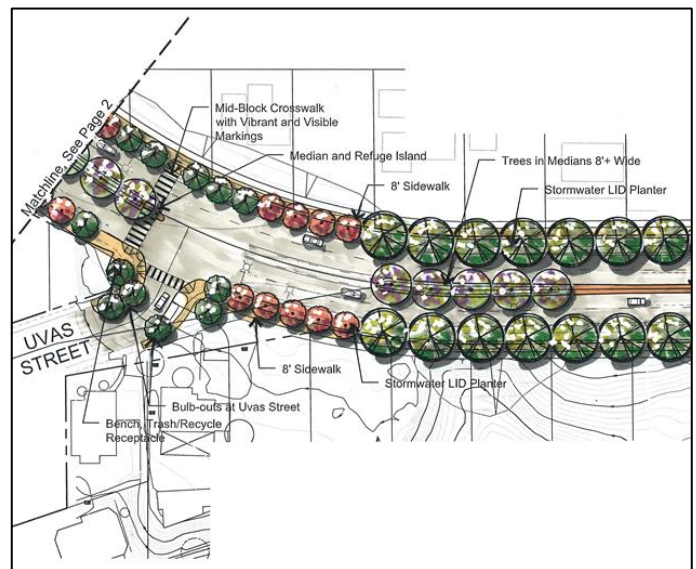
JCNI has worked to understand how to address infrastructure deficits and estimate costs of the proposed improvements. However, the team needed the help of a landscape architect who could design environmental improvements and improve walkability within the project area.

### EPA's Land Revitalization Technical Assistance

EPA's Land Revitalization Program provided contractor support to identify streetscape improvement possibilities for Market Street and Euclid Avenue, including preparing

an Opportunities and Constraints Map based on planning documents, site-specific conditions, and community input from previous planning efforts. Roadway plans were developed to expand sidewalks, allowing residents to have easier access to natural trails, the San Diego Trolley, and bus transit. The two alternative cross-sections and streetscape designs illustrate a future streetscape that is walkable, interconnected with points of interest, and more available for trees and green infrastructure development.

EPA's technical assistance will help bring new life to the Diamond Neighborhoods and support the broader plan to develop urban infill and ultimately spur economic development in the community.



Market Street and Uvas streetscape design option (ICF)

For more information, contact Noemi Emeric-Ford, EPA Region 9 Brownfields Program, at [Emeric-Ford.Noemi@epa.gov](mailto:Emeric-Ford.Noemi@epa.gov).