

## Selected Scatter Plot Matrices Legend

- The site number(s) shown on the Scatter Plot Matrices are AQS codes.
- The first two (2) digits are the state code, the next three (3) digits are the County code, and the last four digits are the Site code (same as the Continuous Ambient Monitoring Station Code).
  - The digit within the parentheses provides the Parameter Occurrence Code (POC) for each site's monitor.
  - The last letter (Y or N) indicates whether a given Site-POC is reported to the EPA (Yes or No).

## Appendix C Selected Scatter Plot Matrices

---

**Figure C-1 Scatter Plot Matrix Ozone Houston-Baytown-Huntsville, TX**

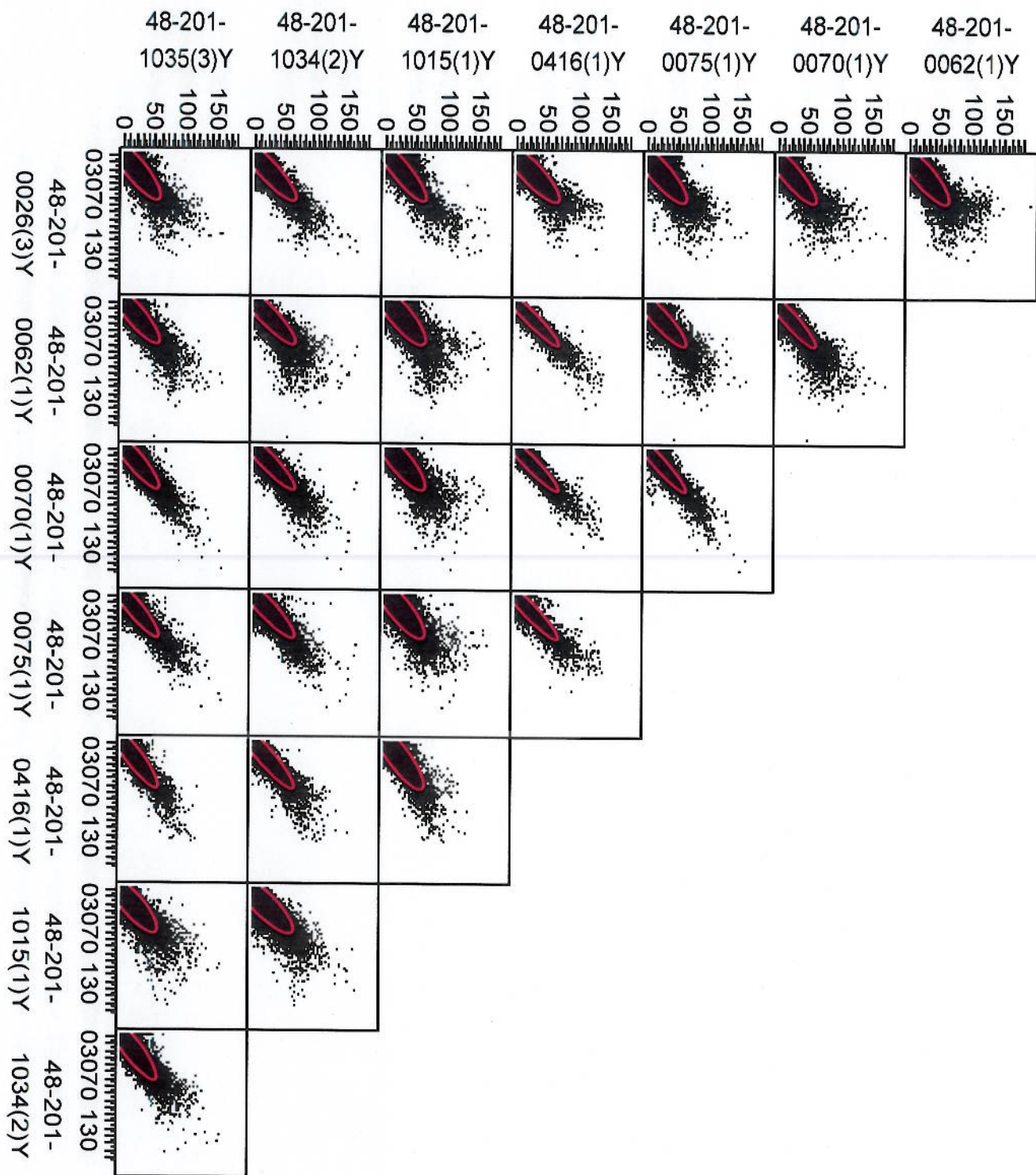


Figure C-2 Scatter Plot Matrix Ozone Dallas-Fort Worth, TX

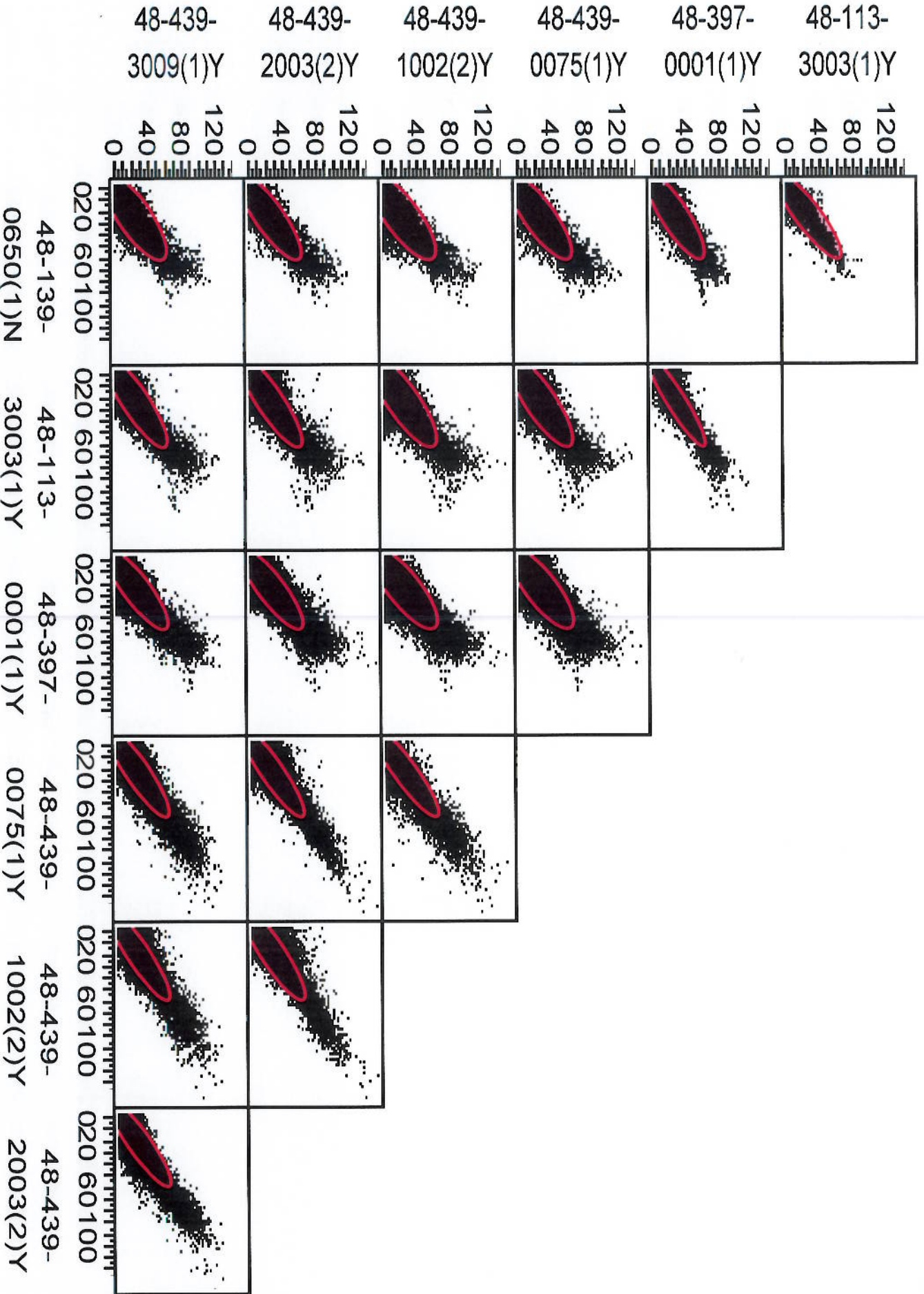


Figure C-3 Scatter Plot Matrix All Ozone San Antonio, TX

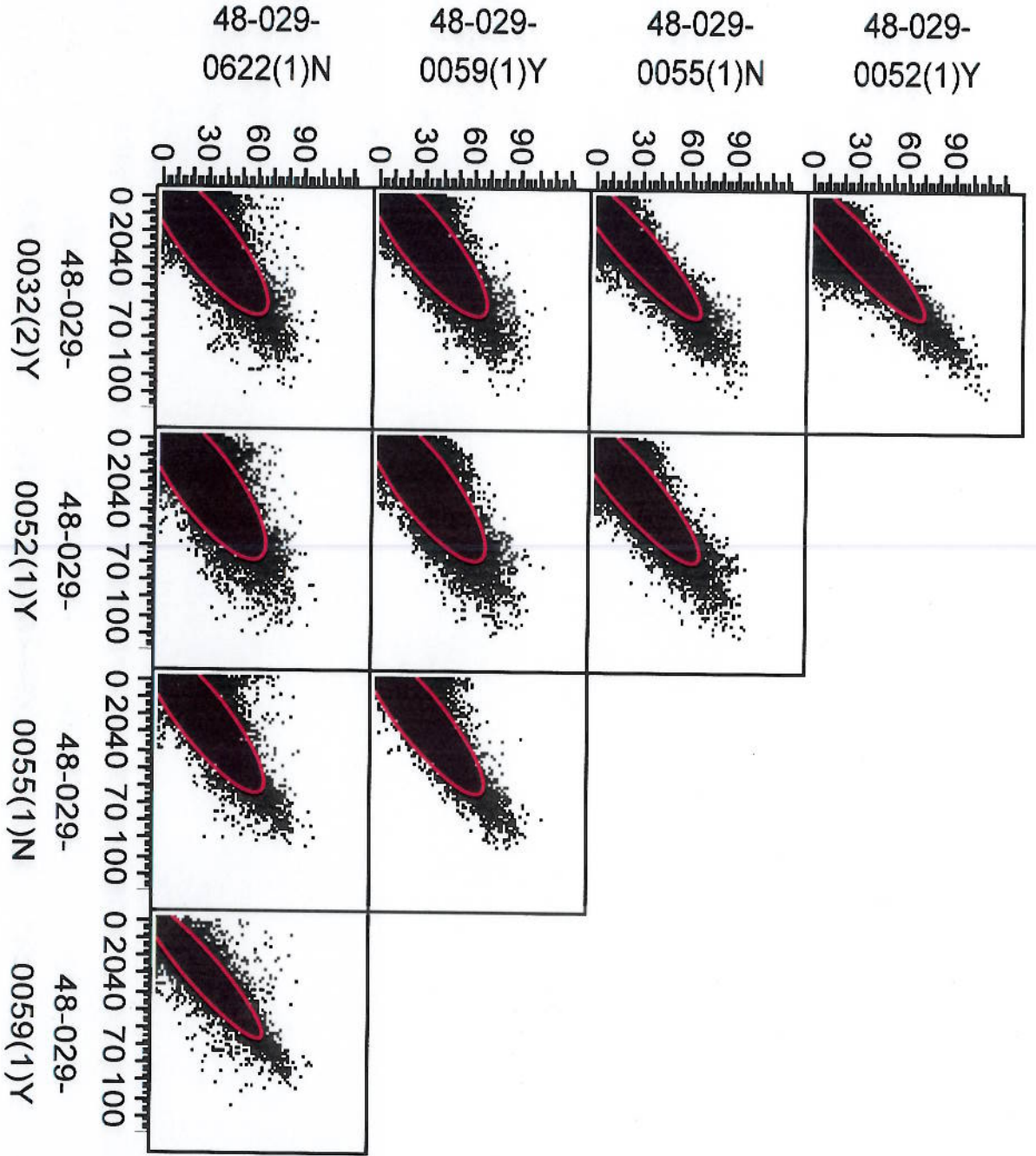


Figure C-4 Scatter Plot Matrix All Ozone Austin-Round Rock, TX

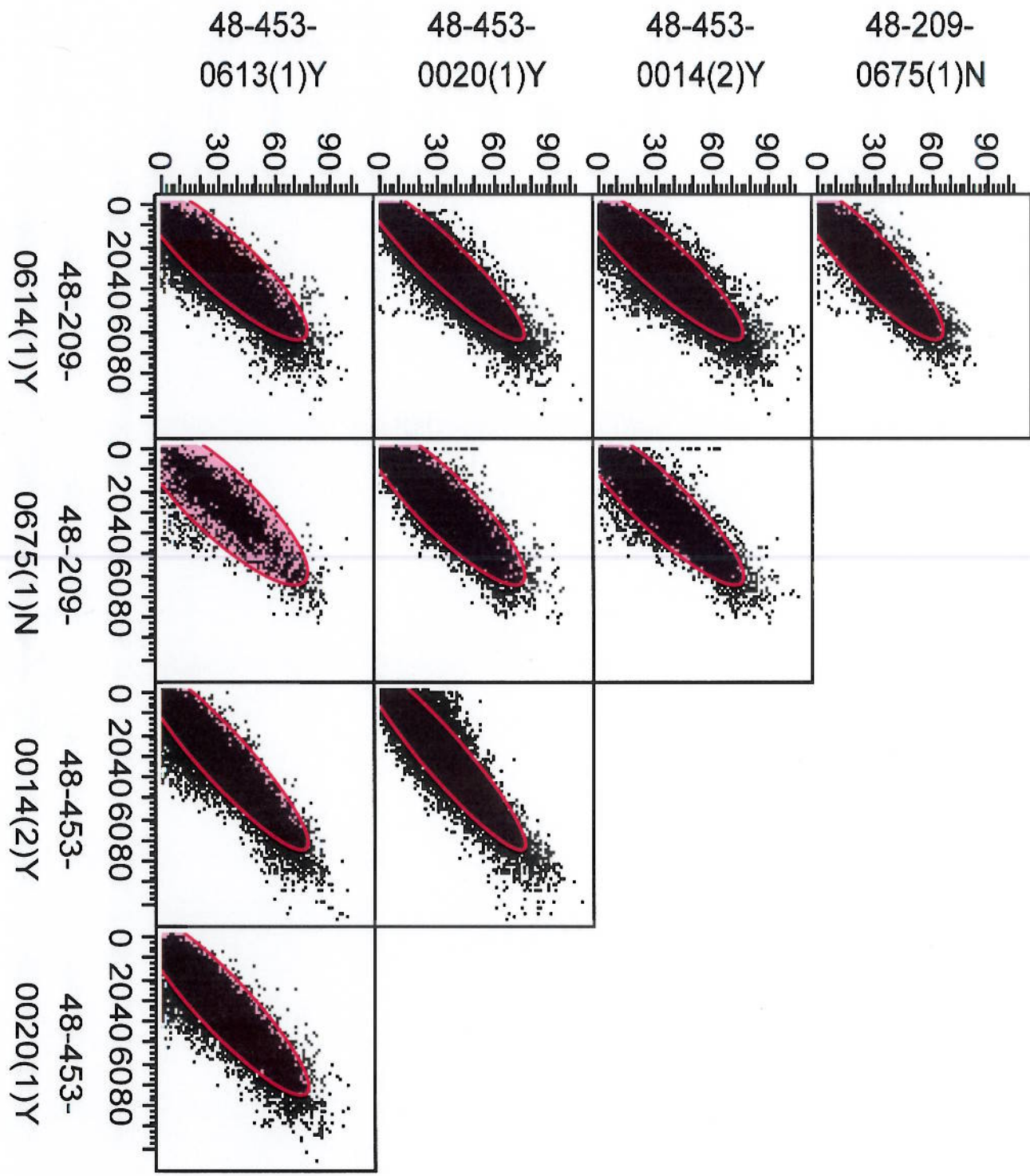


Figure C-5 Scatter Plot Matrix All Ozone El Paso, TX

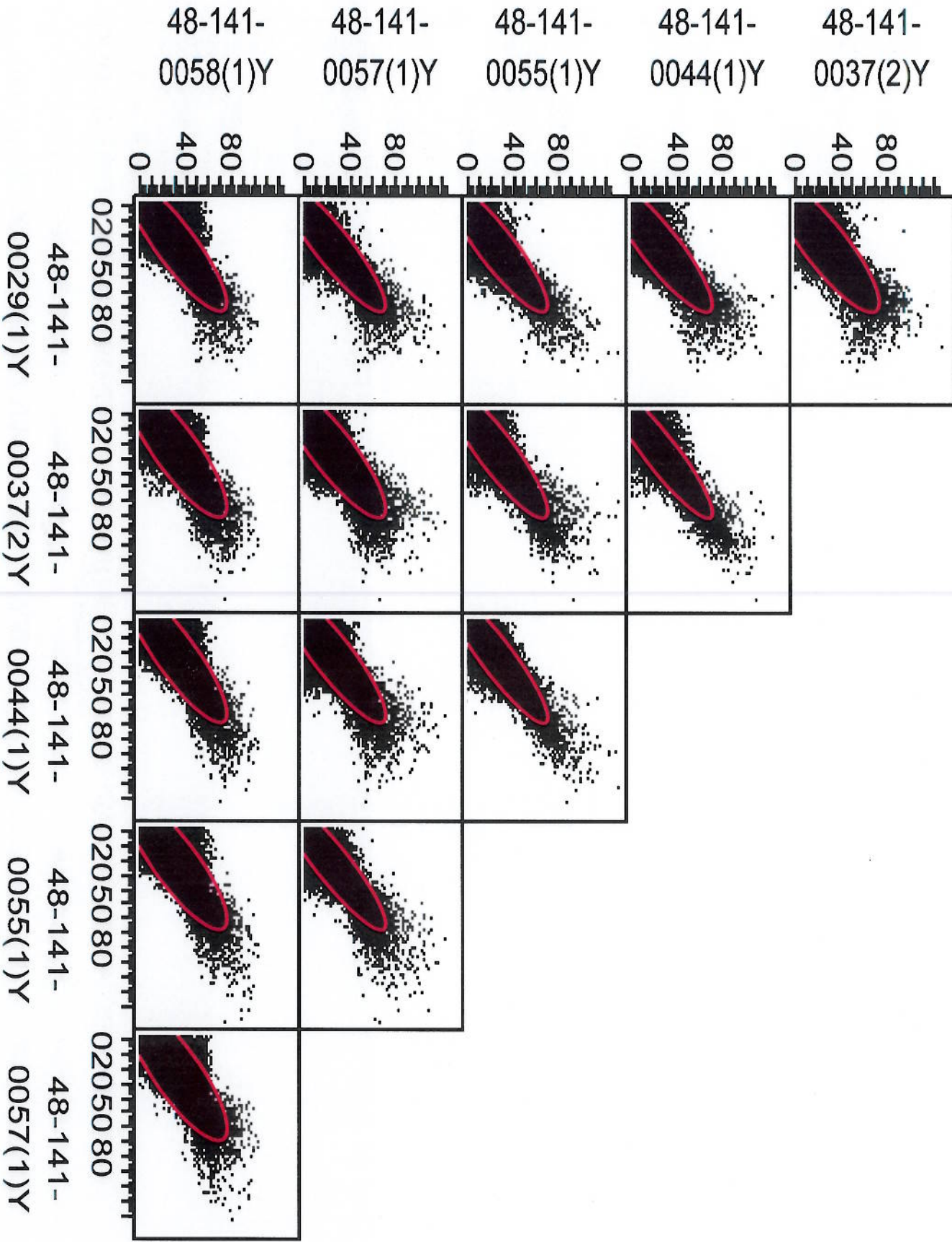
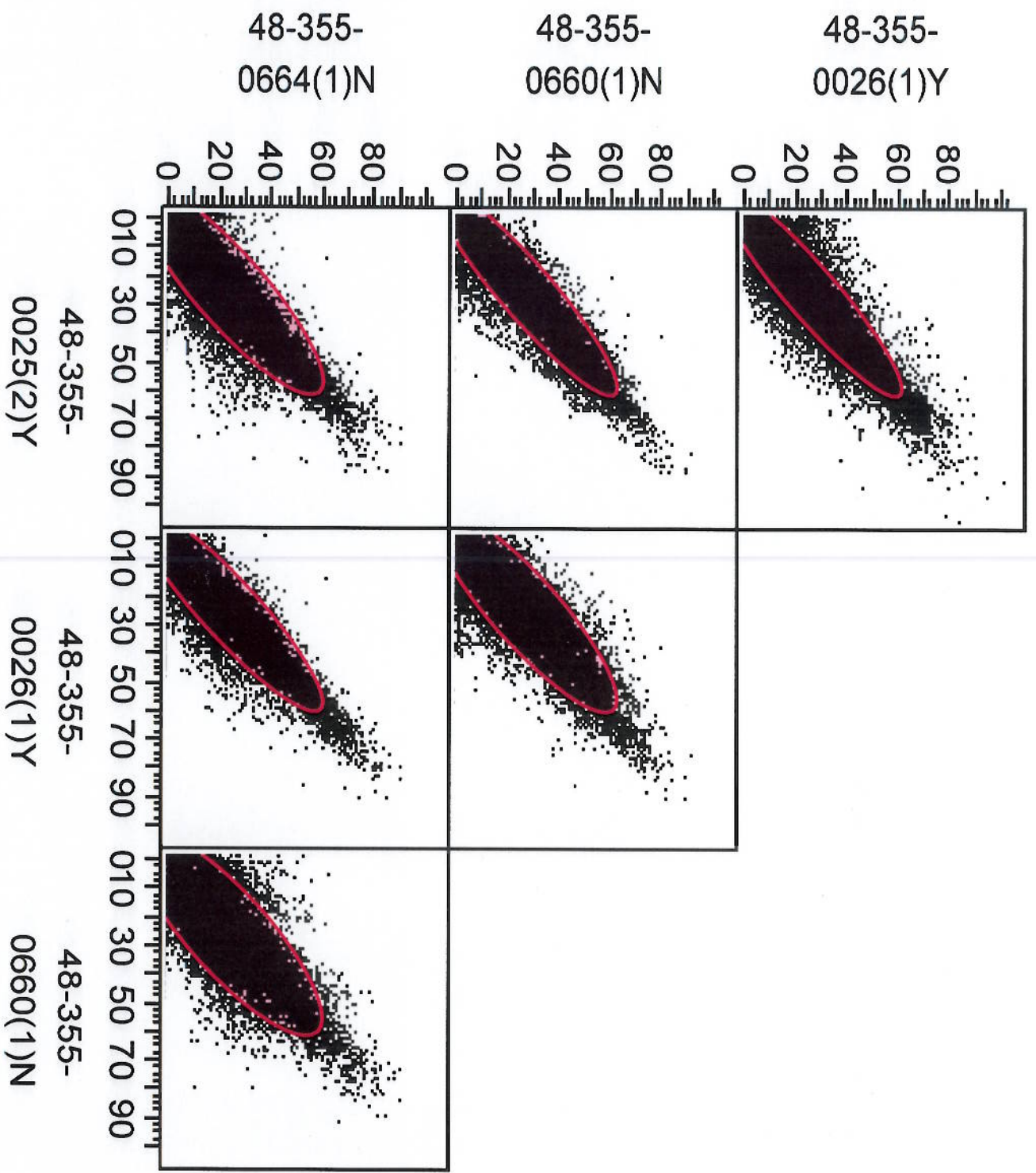
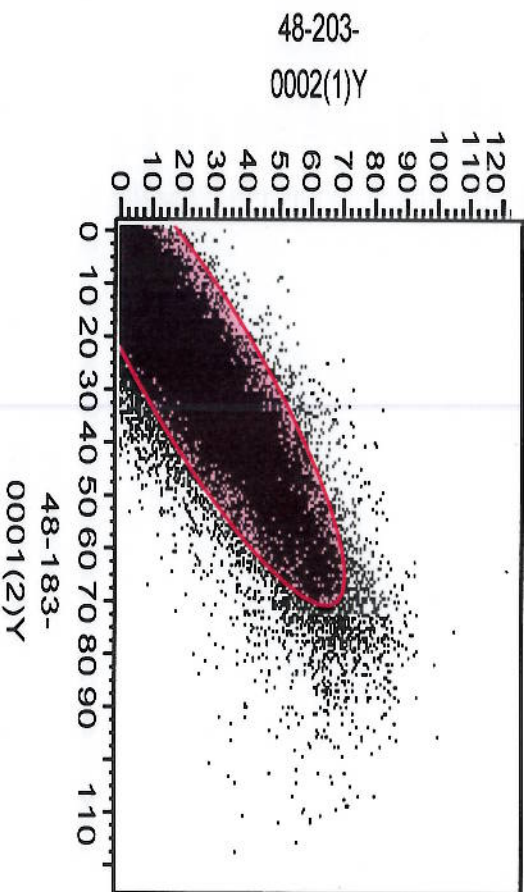


Figure C-6 Scatter Plot Matrix All Ozone Corpus Christi-Kingsville, TX



**Figure C-7 Scatter Plot Matrix All Ozone Longview-Marshall, TX**



**Figure C-8 Scatter Plot Matrix All Ozone McAllen-Edinburg-Mission, TX**

