

# RADIOLOGICAL RECOVERY LOGISTICS TOOL

Michael D. Kaminski, Scott Parent, Douglas E. Johnson, Strategic Security Sciences, Argonne National Laboratory  
 Matthew Magnuson and Sang Don Lee, Office of Research and Development, Center for Environmental Solutions and Emergency Response, U.S. Environmental Protection Agency  
 Benjamin Stevenson and Orly Amir, National Urban Security Technology Laboratory, Science and Technology Directorate, U.S. Department of Homeland Security

## ABSTRACT

- Argonne is building and testing a tool, the **Radiological Recovery Logistics Tool (RRLT)**, that can be used during the response and recovery from a radiological or nuclear incident to effectively allocate appropriate commercial and public works equipment to mitigate, remove, and contain radiological contamination. The requirements for this tool—as well as development of the resulting software—is overseen by a steering committee of stakeholders from DHS's National Urban Security Technology Laboratory (NUSTL), the Federal Emergency Management Agency (FEMA), and the Environmental Protection Agency (EPA).
- RRLT's Knowledge Base will contain information on the form of contamination, types of contaminated surfaces, affected facilities, and information on various types of municipal and commercial equipment assets that may be used to plan an expedited mitigation and remediation strategy.
- RRLT is driven by *use cases*. A use case is an intention with which a user approaches the software. Use cases are grouped into delivery increments to schedule development, testing, and presentation to stakeholders. This model partitions the system into seven increments: User Arrival and Authentication, Search and Navigation, Equipment Recommendation, Plan Management, Content Management, and Expanded Access. Once a user is authenticated, RRLT will present the user with a dashboard that allows them to explore or search RRLT's content. The dashboard will also include a "Plan" panel for collecting decisions and relevant observations about an incident at hand to facilitate development of an equipment list.
- RRLT will offer three general modes of access to items in the knowledge base:
  - Keyword search for direct discovery of items,
  - Navigation along predetermined paths from recovery goal towards equipment types, and
  - Interactive guidance towards equipment types by an autonomous software agent: the *Equipment Recommendation Wizard*.



## EQUIPMENT FOR RADIOLOGICAL RESPONSE AND RECOVERY

- Considers a wide area release of nuclear or radiological material such as nuclear plant accident, RDD, IND.
- Compressing the recovery timeline through the use of municipal and commercial equipment.
- We developed example missions or scenarios for five "Support Goals" that ask - *What types of municipal and commercial equipment can be used to complete the scenario activity, and do we have sufficient data to recommend their use and predicted efficacy?*
- At this stage, we expect the following activities in the impacted area:
  - People, vehicles, and objects have moved and are moving in and out of the contaminated areas,
  - Urgent mitigation or remediation is needed for critical infrastructure (e.g., water utility, energy utility, transportation, medical, fire stations, government facilities, etc.),
  - Stakeholders are developing remediation strategies...



## SUPPORT GOALS

- Survey and monitoring:** Monitor the radiological contamination levels in affected areas for an extended period.
- Mitigation of received dose to first responders:** Reduce the radiation dose burden to response and recovery personnel.
- Decontamination (gross and final):** Decontamination methods can be more effective if implemented within days of a release rather than waiting months or years.
- Waste management:** Large amount of contaminated, solid waste will be generated over a wide area from businesses and residences.
- Containment of wastewater:** Water will likely be used by first responders to extinguish fires that may be generated during a radioactive release. It may also be used to reduce radiation levels to early responders and subsequent response teams.

## EXAMPLE EQUIPMENT TABLE FOR EACH SUPPORT GOAL

Scenario Description	Summary	Category	Equipment or Method Description
Hard, horizontal surfaces such as roads, walkways and parking lots can be contaminated. Prior studies and experience show that contamination on paved surfaces can be effectively reduced by washing these surfaces with water based solutions. What type of equipment can wash many linear miles of these paved surfaces and collect the washings?	Common unsolved issues are (1) Availability of previously owned equipment. It may already be in commercial or private use, or owners may be reluctant to allow its use in a radiological environment without prior agreements in place. (2) Ability to decontaminate equipment afterward for that contaminated use. Street sweepers are attractive options, but they were not designed to wash the street or collect very small particles. Studies are necessary to determine efficacy for urban decontamination. With any method that employs water, controlling runoff (by diverting it from sewer lines or covering grass) is important and difficult, especially when dumping thousands of gallons of water on an area.	EQUIPMENT	<b>Street sweeper</b> Used to clean dirt, gravel, and small debris from roadways.
			<b>Large area pressure washing</b> Designed to clean paved areas.
			<b>Drain covers</b> Specialty or ad hoc covers can protect sewer intakes.
			<b>Agricultural aircraft</b> Crop dusters or fog sprayers spread pesticides or fertilizers, respectively, over large tracts of land.
			<b>Firefighting aircraft dumpers</b> Designed to fight fires by discharging an area with water source.
<b>Handi buckets</b> Designed to fight fires by discharging an area with water source.			
		ADVANTAGES	Water or waterless vacuum sweeper. 50 liters per minute, 1,650-liter tank.
		LIMITATIONS	Designed for sand and grit type debris, some units do not have HEPA filters.
		R&D NEEDS	Effectiveness on smaller particle sizes (BE, PE). Controlling factor (BE). Water recycle options (LR, BE, PE).
			Polyethylene, slip, or magnetic drain covers, or ad hoc (e.g., wood panel, poly-sheeting).
			Large coverage rate, versatile aircraft.
			Amount of water sufficient for goal, containment of water, access to urban canyons.
			Available COTS (DoD-Yoursell (DFV) guidance).
			Survey of inventory (local, regional, national, private, commercial) (LR, Controlling factors (BE).
			Survey of inventory (local, regional, national, private, commercial) (LR, Controlling factors (BE).
			Survey of inventory (local, regional, national, private, commercial) (LR, Controlling factors (BE).
			Survey of inventory (local, regional, national, private, commercial) (LR, Controlling factors (BE).

## CONTAINMENT OF WATER AND WASTEWATER

- Water will likely be used by first responders to extinguish fires that may be generated during a radioactive release.
- Water may also be used to reduce radiation levels to early responders and by subsequent response teams.
- How can water be collected or diverted for proper treatment and disposal?
- What types of equipment can be used to collect, contain, and transport liquid wastes?
  - Examples: portable tanks and storage bladders, barges, storm sewers, reservoirs.

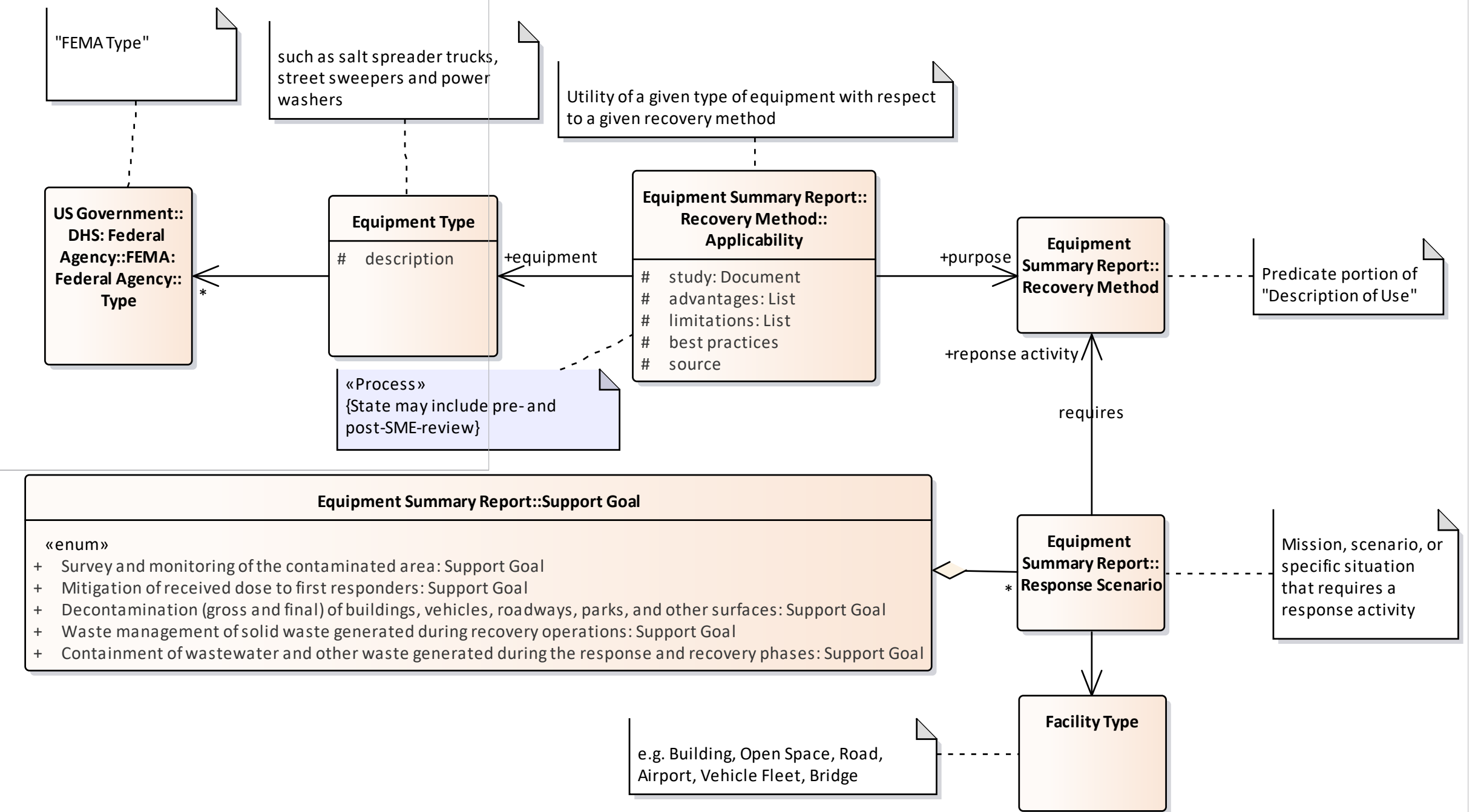
## WASTE MANAGEMENT

- Contaminated solid waste will be generated over a wide area from businesses and residences.
- Solid radioactive waste should be collected for staging and disposal.
- What types of municipal and commercial equipment can be used to stabilize, contain, store, and transport the radioactive solid waste generated during mitigation and decontamination operations?
- Example: Municipal waste garbage trucks to pick up garbage and collect in interim locations.



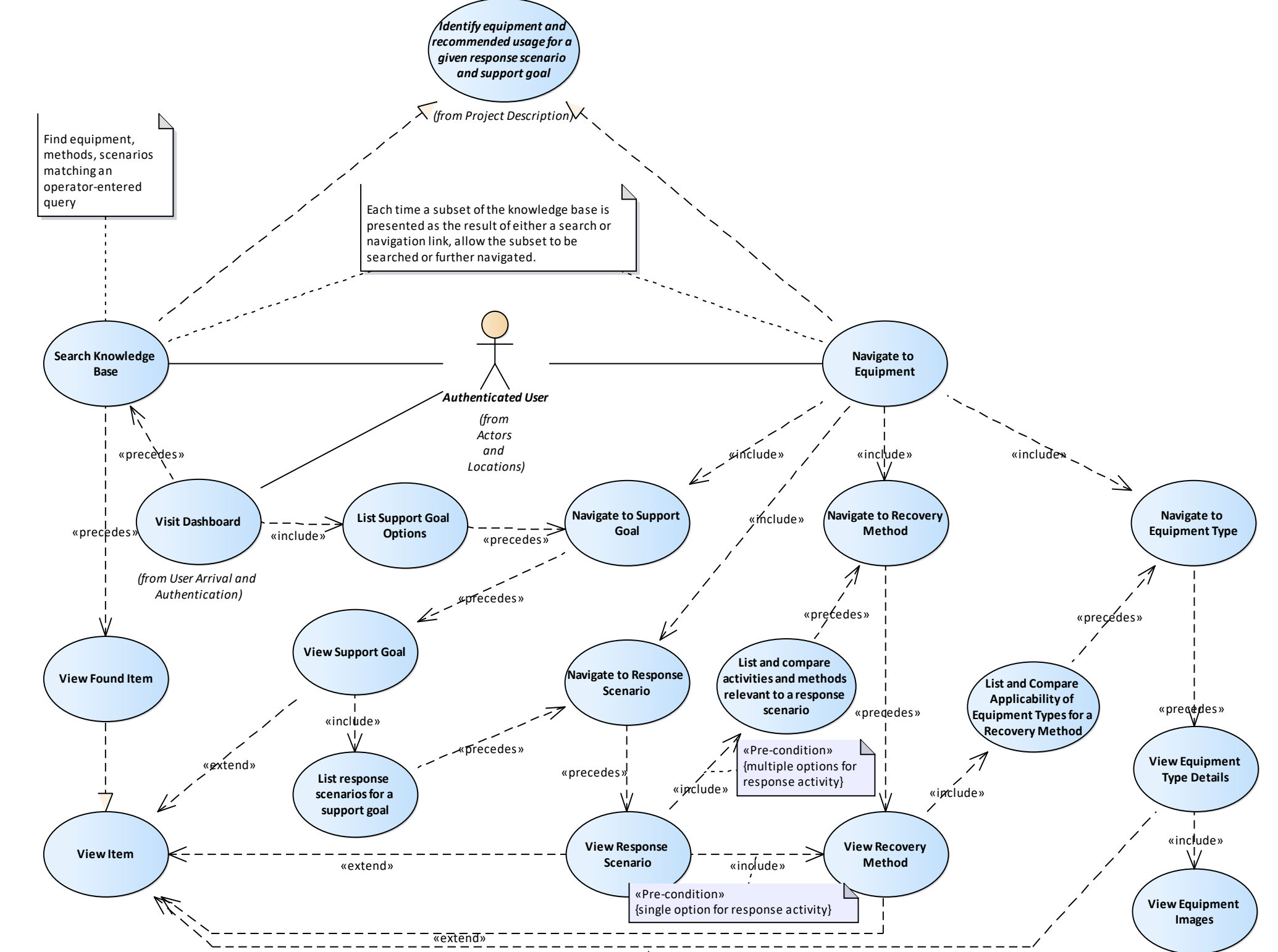
## THE MODEL

- RRLT's Knowledge Base will contain details on dozens of Equipment Types and facilitate the Operator's discovery and consumption of these details most pertinent to a dynamically selected subset of recovery scenarios—with the possible addition of environmental details about the incident for which recovery is being conducted.
- Equipment Type
  - The RRLT knowledge base groups equipment into types by form and function.
  - The equipment types are, in general, broadly encompassing of many specific pieces of equipment that would fall under the same category and will be linked to the FEMA Resource Typing Library Tool (RTL) when possible.
  - It should be noted that some equipment options provided by the RRLT may not be associated with a Resource Typing ID—and other might be associated with multiple typing IDs.
  - The RRLT database of equipment is not limited to federally supported equipment options and may recommend equipment available through federal, regional, or local resources—or from non-governmental organizations, vendors, and stores.
- Facility Type
  - The facility type describes the structure, topographical feature category, surface, or specific facility that is impacted by contamination.
  - The intent is to alert the user that the tool contains specific information regarding a specific material or business function that may be useful to the stakeholder.



## SEARCH AND NAVIGATE

- Once authenticated, the operator will have access to a "Search" bar in a consistent location near the top of the viewport.
  - Users will be able to enter queries consisting of words, quoted phrases, Boolean combinations (AND, OR) of subqueries, and negated subqueries ("NOT" expressions).
  - When the operator submits a query, the system will respond by displaying a list of items matching that query: the search results.
- The appearance and behavior of search results will be consistent with that of lists of items arrived at by navigation and other means throughout the system.
- Each item will be represented by a listing that includes a hyperlinked label along with an icon indicating the type or category to which the item belongs (e.g. goal, scenario, equipment type).
- The default presentation of these listings will be rows sorted alphabetically by title.
- Clicking on the label or icon within a listing will cause the system to navigate forward to the complete content for that selected item.
- The appearance, structure, and behavior of an item's content will vary in accordance with the type of item being viewed.
- In general, the operator will be presented with the name or title of the item, a passage of text describing the item, any images associated with the item, and in most cases, links allowing for navigation to related items.
- RRLT offers a navigation hierarchy leading towards details on types of equipment listed in the system's knowledge base.



Municipal and Commercial Equipment for Radiological Response and Recovery in an Urban Environment: State of Science, Research Needs, and Evaluation of Implementation Towards Critical Infrastructure Resilience, Argonne National Laboratory Report, ANL/NE-35-17, 2018.