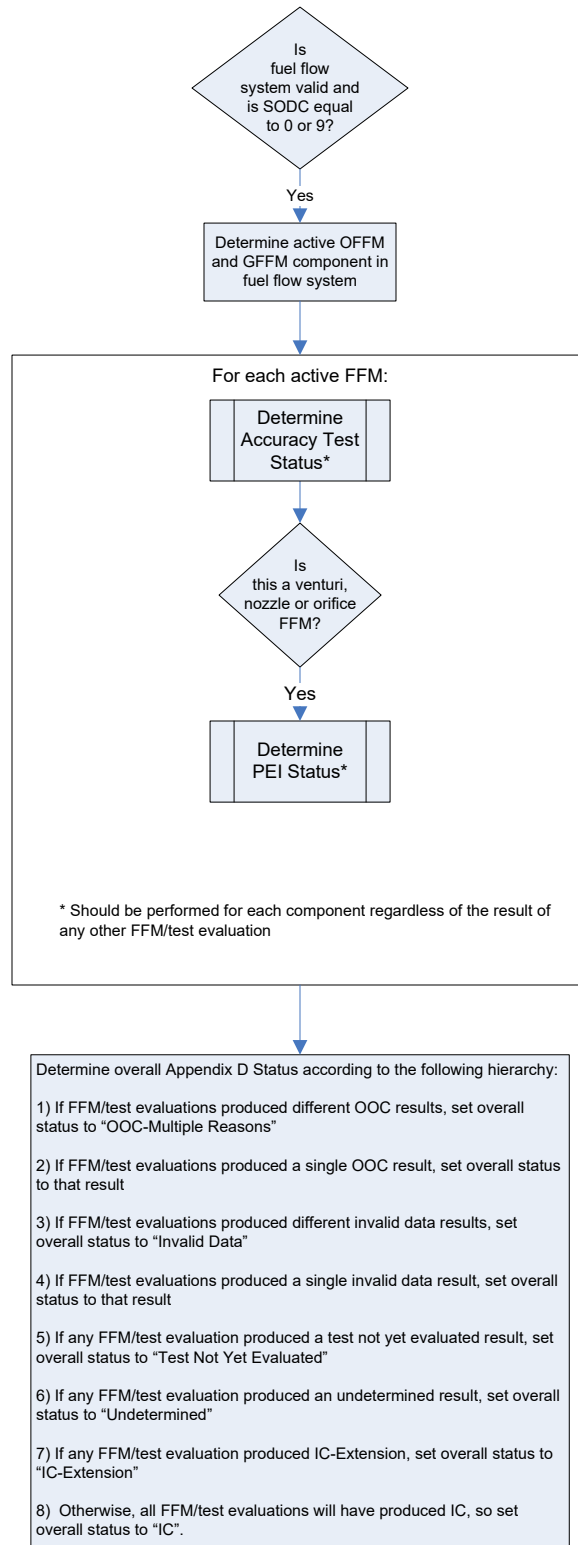
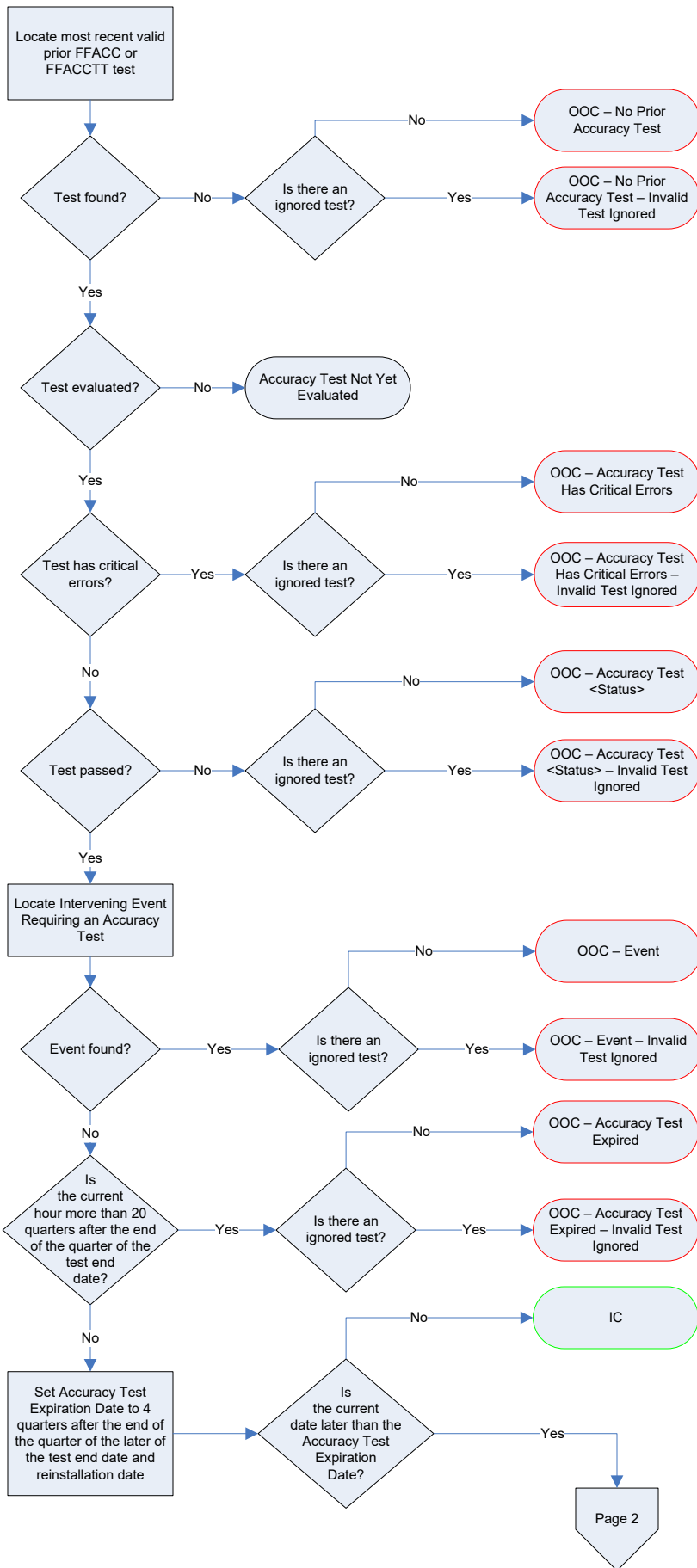


QA Status Evaluation Appendix D



QA Status Evaluation

Appendix D – Determine Accuracy Test Status



QA Status Evaluation

Appendix D – Determine Accuracy Test Status (continued)

Page 2

Determine Eligibility
for Fuel-Flow-to-
Load Testing for
Accuracy Test

For each quarter subsequent to the quarter of the later of the accuracy test date and reinstallation date and prior to the current quarter:

If this is a year-round reporter or if the checked quarter is the 3rd quarter for an OSO reporter,

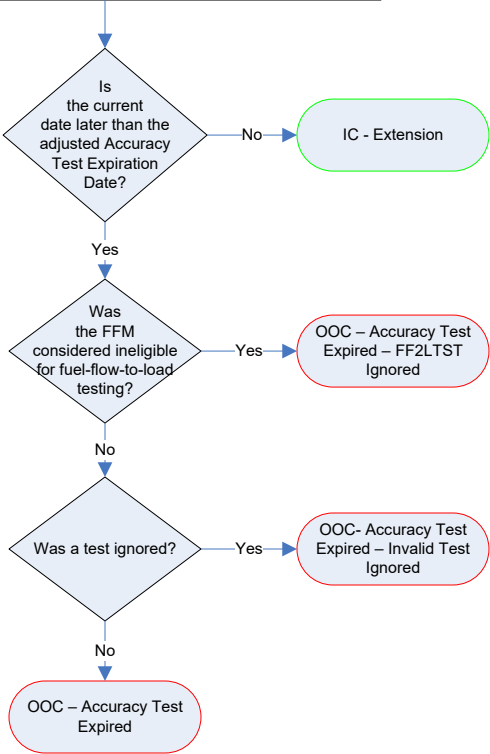
- A. add 1 quarter to the Accuracy Test Expiration Date if the checked quarter is a non-operating quarter or a non-fuel-flow-QA operating quarter, OR
- B. add 1 quarter to the Accuracy Test Expiration Date if the checked quarter is within the fuel-flow-to-load eligibility period, OR
- C. add 1 quarter to the Accuracy Test Expiration Date if there is an NONQADB exemption for the flowmeter and the checked quarter.

If the checked quarter is the 2nd quarter for an OSO reporter,

- A. add 1 quarter to the Accuracy Test Expiration Date if if this quarter is within the fuel-flow-to-load eligibility period, OR
- B. add 1 quarter to the Accuracy Test Expiration Date if if there is an NONQAOS exemption for the fuel and the checked quarter, OR
- C. add 1 quarter to the Accuracy Test Expiration Date if if there is an NONQADB exemption for the flowmeter and the checked quarter.

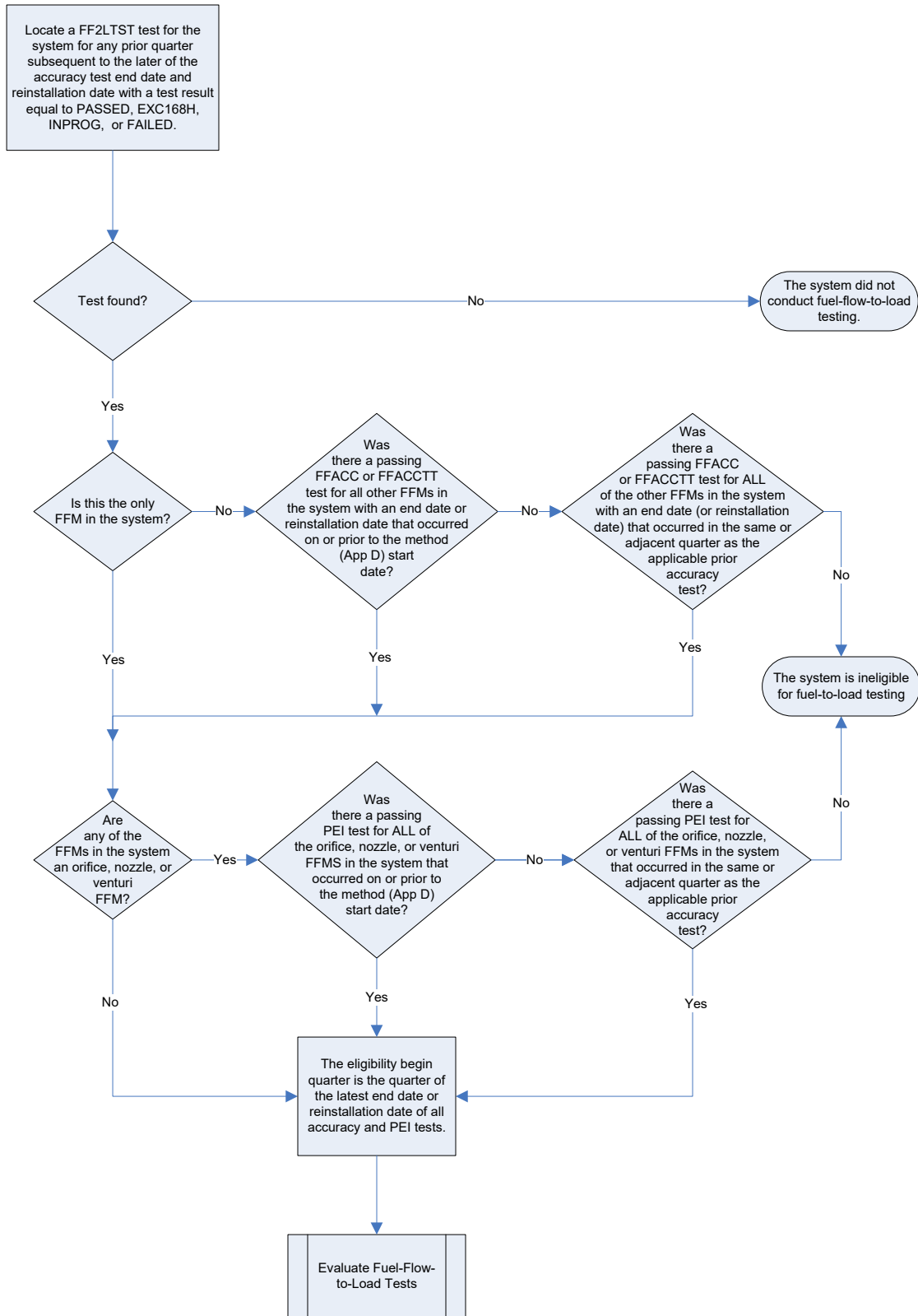
If the checked quarter is the 1st or 4th quarter for an OSO reporter,

- A. add 1 quarter to the Accuracy Test Expiration Date if if the subsequent 2nd quarter is within the fuel-flow-to-load eligibility period, OR
- B. add 1 quarter to the Accuracy Test Expiration Date if if there is an NONQAOS exemption for the fuel and the checked quarter, OR
- C. add 1 quarter to the Accuracy Test Expiration Date if if there is an NONQADB exemption for the flowmeter and the checked quarter.



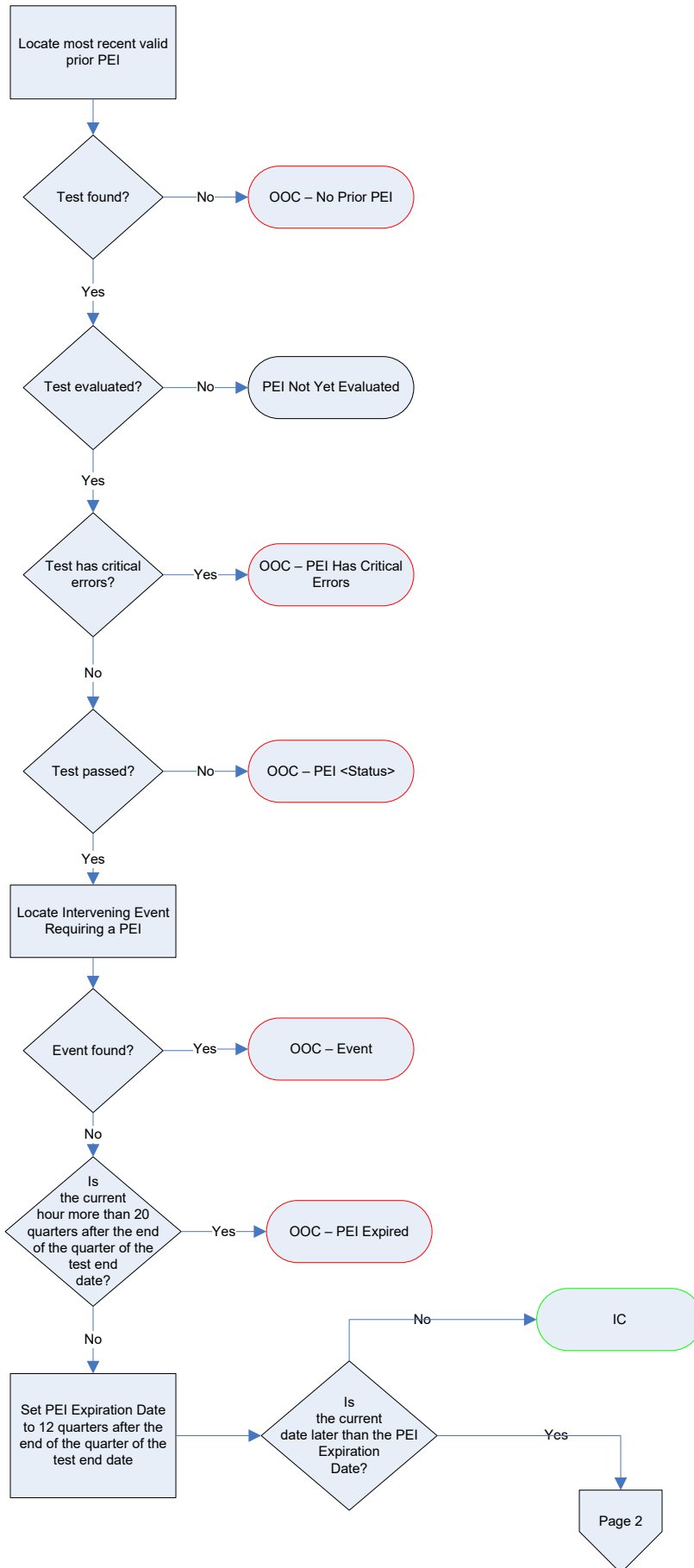
QA Status Evaluation

Appendix D – Determine Eligibility for Fuel-Flow-to-Load Testing for Accuracy Test



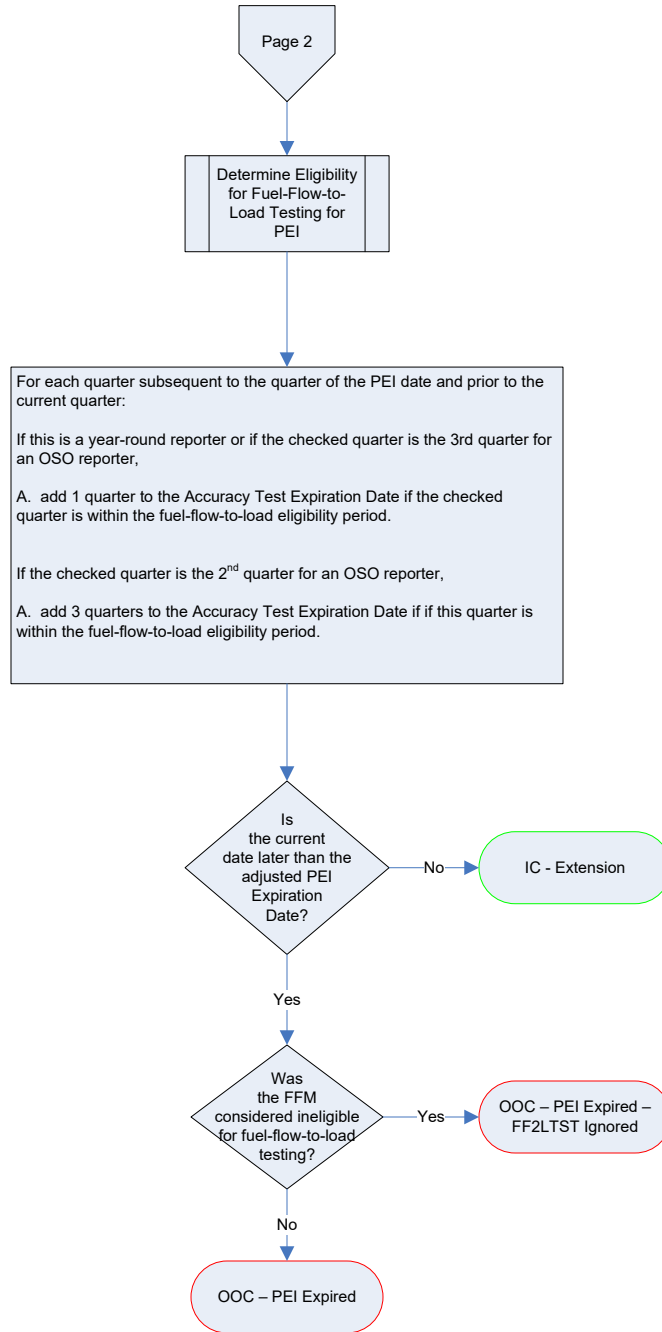
QA Status Evaluation

Appendix D – Determine PEI Status



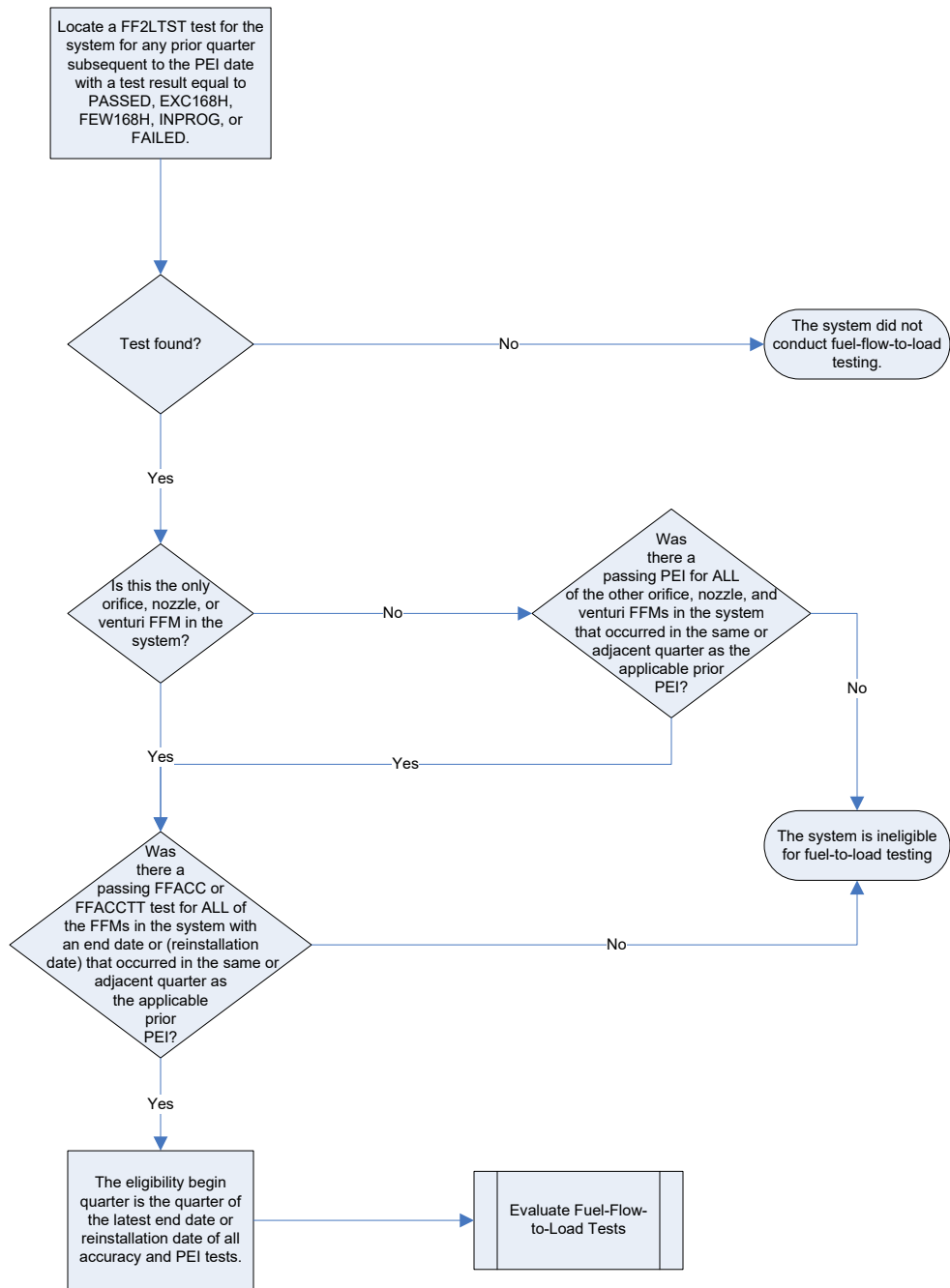
QA Status Evaluation

Appendix D – Determine PEI Status (continued)



QA Status Evaluation

Appendix D – Determine Eligibility for Fuel-Flow-to-Load Testing for PEI



QA Status Evaluation

Appendix D – Evaluate Fuel-Flow-to-Load Tests

