



ORD's Center for Environmental Measurement & Modeling (CEMM)

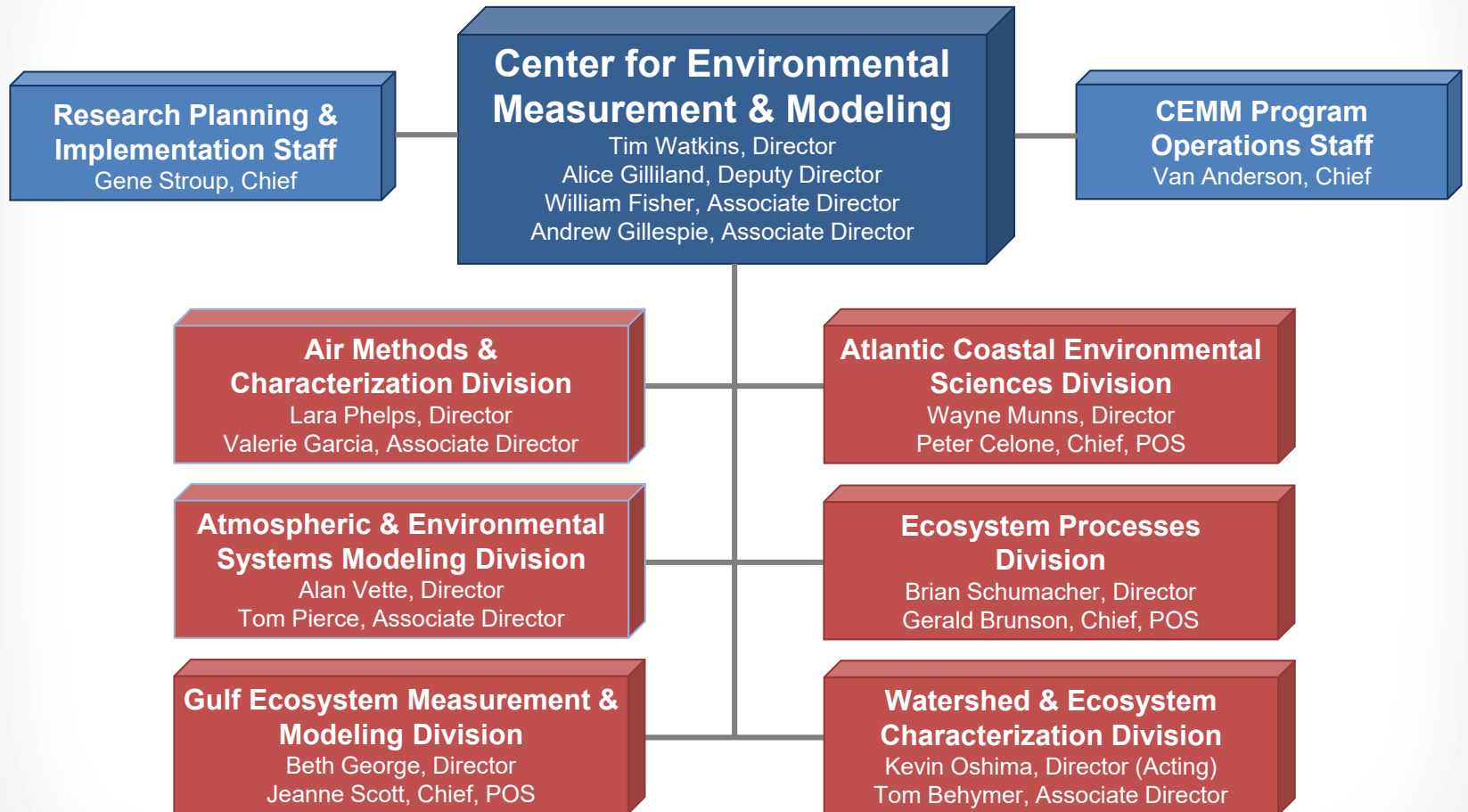
**Overview for Sustainable and Healthy Communities
BOSC Subcommittee
June 16, 2020**



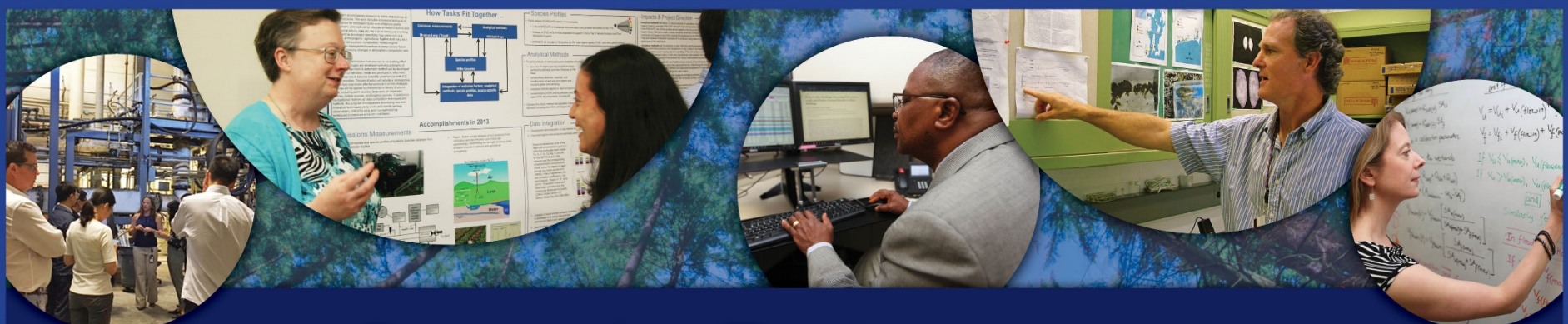
Tim Watkins, Director



Center for Environmental Measurement & Modeling



Approximately 375 federal staff total



Center for Environmental Measurement and Modeling (CEMM)

Protecting human health and the environment by delivering innovative measurement and modeling solutions to EPA and our partners





CEMM Research Mission

What

CEMM develops, evaluates, and applies measurements and models to characterize the sources, occurrence, transformation, transport and effects of pollutants and stressors in the natural environment.

Why

The results of CEMM research will:

- Provide fundamental methods and models required to implement environmental statutes.
- Position the Agency and its partners to take advantage of innovations in measurement and modeling science.
- Identify approaches and tools to inform effective management of water/airsheds and ecosystems.
- Generate data to inform human and ecological exposure, health, and risk assessments.

How

To fulfill this mission, CEMM scientists will collaborate and partner within and outside of ORD to deliver solutions-driven research that is responsive and impactful.



CEMM Contributions to SHC

Topic	Research Area	CEMM Contribution
Contaminated Sites	Site Characterization and Remediation	Bioavailability/bioaccessibility and passive sampling to support remediation
	Vapor Intrusion	<ul style="list-style-type: none"> • Characterize vapor intrusion in large buildings • Guidance on sub-slab sampling of soil gas • Data and models of temporal and spatial variability
	Chemicals of Immediate Concern	<ul style="list-style-type: none"> • Lead bioavailability to inform exposure assessment • Analyses of lead/PFAS concentrations in residential sample (soil, dust, drinking water) • Thermal treatment of PFAS • PFAS Innovative Treatment Team
Healthy and Resilient Communities	Community Benefits from Remediation, Restoration, and Revitalization	<ul style="list-style-type: none"> • Approaches/tools to evaluate effectiveness of R2R2R efforts • Ecosystem Goods and Services • Community Revitalization
	Community-Driven Solutions	Approaches/tools to identify community vulnerability and to build resiliency



Contact Information

Tim Watkins, Director CEMM

watkins.tim@epa.gov

(919) 541-5114