

## EnviroAtlas & Brownfields

*This fact sheet highlights resources that can support brownfield redevelopment and revitalization for those managing and seeking U.S. Environmental Protection Agency Brownfields grant funding.*

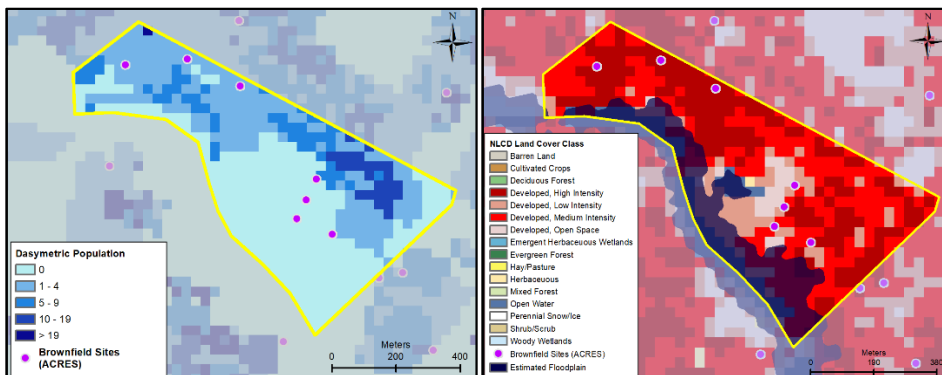
### About EnviroAtlas

EnviroAtlas is a free web-based resource that provides data, tools, research, and analysis on the relationships between nature, people, health, and the economy. Users can view and analyze diverse information to better understand how decisions can affect ecological, health, and equity outcomes at the national level all the way down to the neighborhood level.

EnviroAtlas maps and tools can help communities tell the story about the status of their local environments, populations, contaminated sites and areas needing improvement.

### How to Use these Resources

Use EnviroAtlas maps and tools to tell the story of brownfields you want to redevelop and how this will improve your community. Is your area over-burdened with potentially contaminating facilities? Using EnviroAtlas, you can overlay brownfields and regulated facilities (e.g., Superfund sites, landfills) that convey your story. Show where people live in relation to those sites with the Dasymetric Population map, which estimates how many people live in every 30 meter square across the U.S. Combining maps like the Dasymetric Population, National Land Cover Database, Estimated Floodplains,



*Example EnviroAtlas maps in Wilmington, DE. Left: downscaled population and existing brownfield sites. Right: potential hotspots and flood-prone areas*

and Percent of Low-Wage Workers can indicate heat, flooding, and economic vulnerabilities; this capability helps address the complexity of intersecting and compounding issues.

Updated as new features and data are available, the [EnviroAtlas Interactive Map](#) provides hundreds of geospatial datasets for the entire U.S. and includes built-in analysis tools for easy review of queries and comparisons that can help you tell your story. Built in tools include:

- **Compare My Area:** Allows you to take a snapshot of vulnerable populations in your Census tract and environmental issues of interest, compared to the surrounding county and state. This report can be printed and/or saved.
- **EnviroAtlas Change Analysis Tool (ECAT):** Learn about potential impacts of climate

change in your community by exploring modeled climate scenarios and comparing the change in climate variables (e.g., precipitation) between two time periods (from 1950-2099).

- **Raindrop:** See the general raindrop flow path and distance to the nearest water feature.
- **Watershed Navigator:** How might pollutants from neighboring watersheds impact your community? Identify upstream or downstream connections from any given point in the conterminous U.S.

Available online at:

<https://www.epa.gov/enviroatlas/enviroatlas-interactive-map>

### Explore Health Impacts

The [Eco-Health Relationship Browser](#) allows users to visualize the linkages among ecosystems, the benefits that they provide to people, and dozens of direct human

health outcomes. This Browser is an interactive, user-friendly synthesis of more than 800 research articles; it provides scientific backing for important health linkages that may be relevant to your brownfield redevelopment project.

Available online at:  
<https://www.epa.gov/enviroatlas/enviroatlas-eco-health-relationship-browser>

### Data Availability

EnviroAtlas environmental and demographic data are available for the entire U.S. and can be used to address a range of brownfields related topics. The Dynamic Data Matrix allows you to explore 400+ datasets that may be relevant to your specific brownfields project.

Available online at:  
<https://www.epa.gov/enviroatlas/enviroatlas-dynamic-data-matrix>

In addition to national datasets, fine scale community datasets for over 1400 cities and towns can be used to explore access to parks, schoolyard greenery, street trees, vegetation along waterways, and other environmental assets for health and well-being.

See if your community is on the list:  
<https://www.epa.gov/enviroatlas/about-data>

### Training on EnviroAtlas

Online training resources include:

- short, online tutorial videos on features and functions of the EnviroAtlas Interactive Map,
- in-depth and quick start guides for EnviroAtlas tools,
- examples of how EnviroAtlas data have been applied in a range of decision contexts, and
- recorded demonstration webinars.

Available online at:  
<https://www.epa.gov/enviroatlas/how-use-enviroatlas>

### Access the Data

View data in the Interactive Map, access through web services (such as in other applications like EPA's EJ SCREEN) or download.

Download online at:  
<https://www.epa.gov/enviroatlas/form/enviroatlas-data-download>

### Contact Information

Visit our webpage for more information on using EnviroAtlas and to access data collections:  
<https://www.epa.gov/enviroatlas/enviroatlas-and-brownfields>

Visit the EPA Brownfields website for the latest information:  
<https://www.epa.gov/brownfields>

For questions about using EnviroAtlas data or to get assistance, contact the EnviroAtlas Team at: [enviroatlas@epa.gov](mailto:enviroatlas@epa.gov).

October 2020

The table shows a selection of national EnviroAtlas datasets that are relevant to brownfields. **Click the dataset name to view it in the Interactive Map.** \*Contact the EnviroAtlas Team to get a collection of these and other relevant datasets.

Select Maps & Links	Details
<a href="#">Downscaled population distribution (dasymetric)</a>	Estimates more precisely than Census data where people reside (2010); 30 m
<a href="#">Estimated Floodplains for the U.S.</a>	Helps fill gaps where FEMA flood hazard data are not available (2016); 30m
<a href="#">Business address vacancy</a> / <a href="#">Residential address vacancy</a>	2014 rates by census tract
<a href="#">Potentially restorable wetlands on agricultural land</a>	Land that may be suitable for wetlands restoration (2011); 30 m
<a href="#">Number of farmers markets</a>	By census block group for 2016
<a href="#">National Land Cover Dataset</a>	Land cover for the United States (2011); 30 m
EPA Facilities Data – <a href="#">Brownfield Grantees</a>	Point locations of brownfields, superfund sites, TRI facilities, & others (updated monthly)
<a href="#">Number of low-wage workers (home location)</a>	Number of workers who earn less than \$1250/mo., by census block group of residence (2010)
<a href="#">Percentage of households below quality of life threshold income</a>	Income threshold correlated with happiness, by census block group, adjusted to reflect cost of living by county (2008-2012)