



# **Public Meeting to Discuss EPA's Proposed Remedy under the Corrective Action Program for MAX Environmental, Yukon PA**

7:00pm Tuesday, November 10, 2020

CDR Griff Miller, EPA Remedial Project Manager

Paul Gotthold, EPA Pennsylvania Remediation Branch Chief

LaRonda Koffi, EPA Communications Strategist

# Agenda

- Welcome and Introduction
- Logistics and Instructions
- RCRA Background and EPA Role
- Presentation of EPA Proposed Remedy
- Questions and Answers



# Welcome and Introduction

Paul Gotthold  
Branch Chief,  
EPA Pennsylvania Remediation

# Logistics and Instructions

LaRonda Koffi

Communications Strategist,  
EPA Region 3

# RCRA Background and EPA Role

Paul Gotthold  
Branch Chief,  
EPA Pennsylvania Remediation

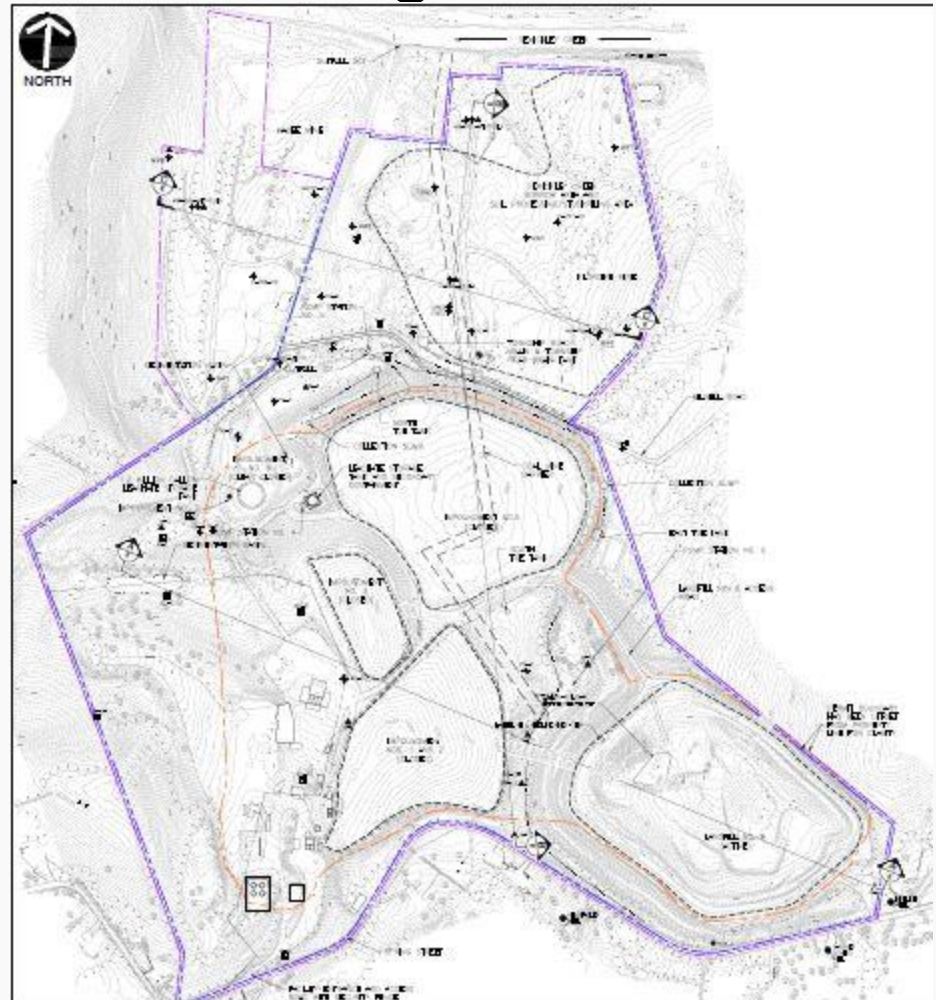
The background features a large, faint watermark of the U.S. Environmental Protection Agency seal. The seal is circular and contains the text "UNITED STATES ENVIRONMENTAL PROTECTION AGENCY" around the perimeter. In the center of the seal is a stylized flower with three leaves and a scalloped top.

# **Presentation of EPA Proposed Remedy**

**CDR Griff Miller**  
Remedial Project Manager,  
EPA Region 3

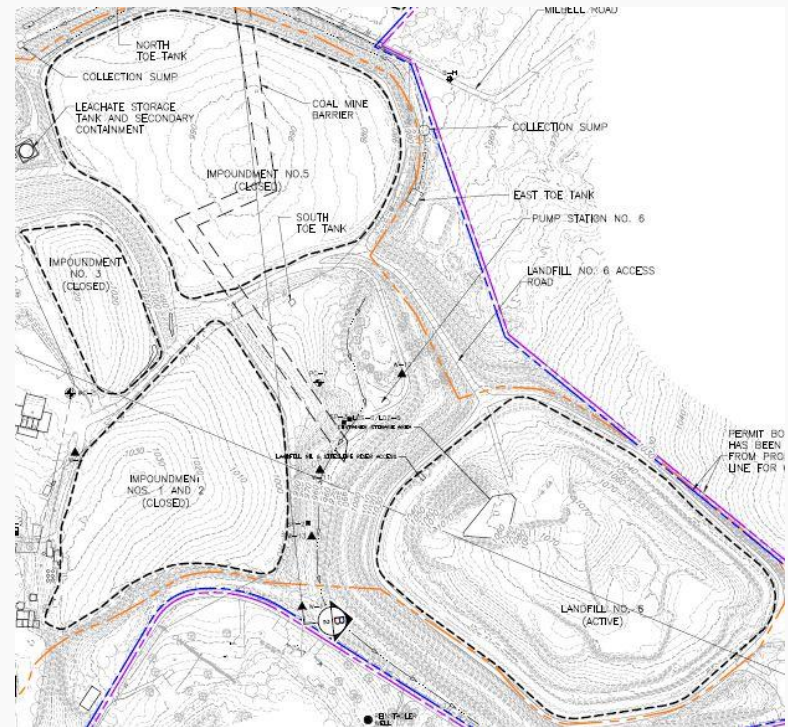
# Facility History and Background

- Began TSD operations in 1964
  - Initially received acids, inorganic wastes from steel and glass manufacturing, electroplating, etc.
  - Since 1990s receives primarily solids including slag, electric arc furnace dust (up to late 2010s), metal-impacted soils, and drill cuttings from oil & gas industry
- Disposal areas
  - Impoundments 1-3: active 1963-78; closed w/waste in place in late 1970s and reclosed/completed 2013
  - Impoundment 4: active 1978-84; clean-closed 1986-89
  - Impoundment 5: hazardous waste disposal active 1978-85; closed w/waste in place 2002
  - Landfill 6: active 1988-present
  - Landfill 7: proposed (under PADEP review)



# Impacted Media - Soil

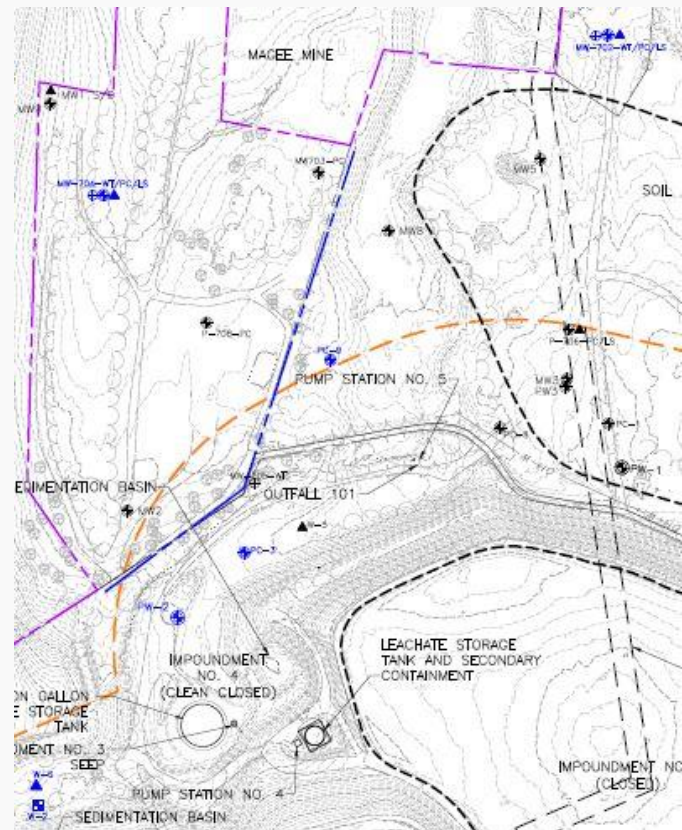
- Waste/soil disposed in impoundments
- Facility workers, construction workers, and trespassers potentially exposed to waste/soil
- Eliminated pathway by capping impoundments
  - Landfill 6 to be capped in phases starting next year





# Impacted Media - Groundwater

- Three zones, which all flow NW
  - Redstone Coal: barium in RC-2
  - Pittsburgh Coal: nitrate in PC-3, SP-3; manganese in PC-1, PC-3
  - Pittsburgh Limestone: fluoride in W-4, W-5, W-10, W-13
- Residents, construction workers potentially exposed to groundwater
- Analysis
  - Point-of-Compliance wells in Redstone Coal meet barium MCL
  - Pittsburgh Coal degraded by mining and unfit for potable use
  - Fluoride likely a result of naturally-occurring fluoride minerals in Pittsburgh Limestone
  - Leachate collection systems and Pittsburgh Coal pump-and-treat system keep contamination localized and prevent off-site migration
- Results: low risk to potential receptors from exceedances in groundwater



# Surface Water

- Nine outfalls covered by NPDES permit
  - No effluent violations in 2020 but history of past violations
- Seven surface water monitoring locations around impoundment 5
  - No exceedances of PA Water Quality Criteria
- Recreators, trespassers and ecological organisms potentially exposed to surface water and sediment
- Low risk to potential receptors due to no exceedances
  - NPDES permit renewal anticipated to add any new seeps/releases and clarify outfalls/sampling locations

# Air

- State air permit covers fugitive emissions from several sources
- Facility performs dust suppression in accordance with its air, hazardous waste, and solid waste permits
- Facility maintains a “dust fall” air monitoring system around perimeter of Landfill 6 in accordance with its solid waste permit
  - No exceedances of ambient air particulate matter standards have occurred
- Additional sampling of dust-fall monitors immediately outside facility by PADEP
- No odors have been observed outside facility perimeter by PADEP air program

# EPA's Proposed Remedy

- Continued compliance with permits
  - Hazardous waste (PAD004835146)
    - Covers current hazardous waste treatment and storage operations and post-closure care of Impoundment 5
  - Solid waste (301071)
    - Covers current disposal operations (Landfill 6) and its eventual closure/post-closure care, post-closure care of Impoundments 1-3
- Add suite of metals to parameters list for quarterly sampling at residential wells

# Questions/Discussion

Reminder: Public comment period ends  
Thursday, November 19, 2020

Contact Information:  
CDR Griff Miller  
215-814-3407  
[miller.griff@epa.gov](mailto:miller.griff@epa.gov)