

**Beazer East, Inc.**

**Former Koppers Wood-Treating Site – Carbondale, Illinois**

**Soil Removal and Surface Cover Remediation Project**

**Weekly Report #4: 11/02/20 – 11/08/20**



**Soil Removal and Surface Cover  
Former Koppers Wood-Treating Site  
Carbondale, IL**

**WEEKLY PROGRESS REPORT**

**Reporting Period:** Monday, November 2<sup>nd</sup>, 2020 to Sunday, November 8<sup>th</sup>, 2020

**Progress Meeting Date:** Tuesday, November 10<sup>th</sup>, 2020

**1.0 Weather Conditions**

Date	Conditions	Wind	Precipitation (in)
Monday 11/2/20	Clear, 28-56 °F	12/WSW	0
Tuesday 11/3/20	Clear, 37-74 °F	6/SSW	0
Wednesday 11/4/20	Clear, 45-78 °F	7.6/SSW	0
Thursday 11/5/20	Clear, 48-75 °F	7.6/SSW	0
Friday 11/6/20	Clear, 48-78 °F	6.5/SW	0
Saturday 11/7/20	Clear, 41-79 °F	5.4/S	0
Sunday 11/8/20	Not On-Site		
Week Total			0
Site Cumulative			5.07

**2.0 Health & Safety**

Manhours Completed this Period: 583

Manhours Completed to Date: 1855

Notes

Day	Tailgate Topic(s)
<b>Monday</b>	Reviewed procedures for exclusion zones and decontamination.
<b>Tuesday</b>	Discussed different traffic routes to soil removal areas and ground personnel safety.
<b>Wednesday</b>	Discussed new work activity, loadout and the importance of staying focused and avoiding distractions.
<b>Thursday</b>	Discussed change work surroundings and stressed importance of staying observant of all tasks taking place on site to maintain a safe work environment.
<b>Friday</b>	Discussed rising COVID cases locally and procedures in place to reduce spread including social distancing and wearing of masks.
<b>Saturday</b>	Communication between operators and ground personnel.
<b>Sunday</b>	-

**3.0 ENTACT Work Activities Summary**

<b>Monday – November 2, 2020</b>
Began clearing efforts in Soil Removal Area 3. Continued dewatering rainwater from ditches in Surface Cover Area 1. Started excavation activities in Soil Removal Area 1. Continued construction of access roads to Soil Removal Area 1.
<b>Tuesday – November 3, 2020</b>
Continued clearing efforts in Soil Removal Area 3. Continued excavation activities in Soil Removal Area 1. Continued construction of access roads to Soil Removal Area 1.
<b>Wednesday – November 4, 2020</b>
Continued clearing efforts in Soil Removal Area 3. Continued excavation activities in Soil Removal Area 1. Began dewatering rainwater Soil Removal Area 1 and loadout of impacted soil for offsite disposal.
<b>Thursday – November 5, 2020</b>
Continued clearing efforts in Soil Removal Area 3. Continued excavation activities in Soil Removal Area 1. Continued loadout of impacted soil for offsite disposal.
<b>Friday – November 6, 2020</b>
Began clearing efforts in Soil Removal Area 4. Placed filter sock and prepared work area in Surface Cover Area 2. Stopped excavation activities in Soil Removal Area 1 at top of slope leading to wetlands area and remaining soils were stockpiled for loadout. Continued loadout of impacted soil for offsite disposal. Ditches holding rainwater were dewatered in Soil Removal Area 1.
<b>Saturday – November 7, 2020</b>
Continued clearing efforts in Soil Removal Area 4. Completed placement of filter sock in Surface Cover Area 2 and continued preparation of work area. Began placement of filter sock in Surface Cover Area 3. Continued consolidation of impacted soils to stockpiles in Soil Removal Area 1. Continued loadout of impacted soil for offsite disposal. Ditches holding rainwater were dewatered in Soil Removal Area 1.
<b>Sunday – November 8, 2020</b>
Not On-Site

**4.0 ENTACT Subcontractors**

<b>Date</b>	<b>Subcontractor/Vendor/ Third Party</b>	<b>Work Activity</b>
11/2/2020	Shawnee Professional Services	Staked out property line by site entrance
11/2/2020	Fabick CAT	Performed equipment maintenance on ENTACT equipment
11/3/2020	Shawnee Professional Services	Existing topo survey in Surface Cover Area 2
11/3/2020	Absolute Plumbing	Set ground box for WWTP effluent water valve
11/4/2020	Shawnee Professional Services	Excavation survey in Soil Removal Area 1 and continued existing topo of Soil Cover Area 2

11/5/2020	Shawnee Professional Services	Excavation survey in Soil Removal Area 1 and continued survey of property line
-----------	-------------------------------	--

**5.0 ENTACT Deliveries**

<b>Equipment</b>		
<b>Date</b>	<b>Description</b>	<b>Quantity</b>
11/6/2020	4" Diesel Pump	1
11/7/2020	Water Truck	1

<b>Material Import – Current Week</b>		
<b>Date</b>	<b>Description</b>	<b>Quantity</b>
11/2/2020	CA-2	259.93 tons
11/2/2020	Filter Sock	990 LF
11/3/2020	CA-2	70.12 tons
11/6/2020	CA-2	90.5 tons

<b>Material Import – To Date</b>	
<b>Description</b>	<b>Quantity</b>
CA-2	1421.45 tons
Demarcation Fabric	405000 SF
Filter Sock	10230 LF
RipRap-1	92.34 tons

**6.0 Material Export**

<b>Material</b>		
<b>Date</b>	<b>Description</b>	<b>Quantity</b>
11/4/2020	Impacted Soils	1364.79 tons
11/5/2020	Impacted Soils	2321.47 tons
11/6/2020	Impacted Soils	2700 tons
11/7/2020	Impacted Soils	1232 tons

<b>Material Export – To Date</b>	
<b>Description</b>	<b>Quantity</b>
Impacted Soils	7618.26 tons

**7.0 Construction Quality Control**

See Attached Reports and Logs:

- Progress Photos
- Progress Map
- Current Project Schedule

**8.0 Request for Information (RFIs)**



- RFI 001 – Stabilized Construction Entrance Aggregate (Approved)

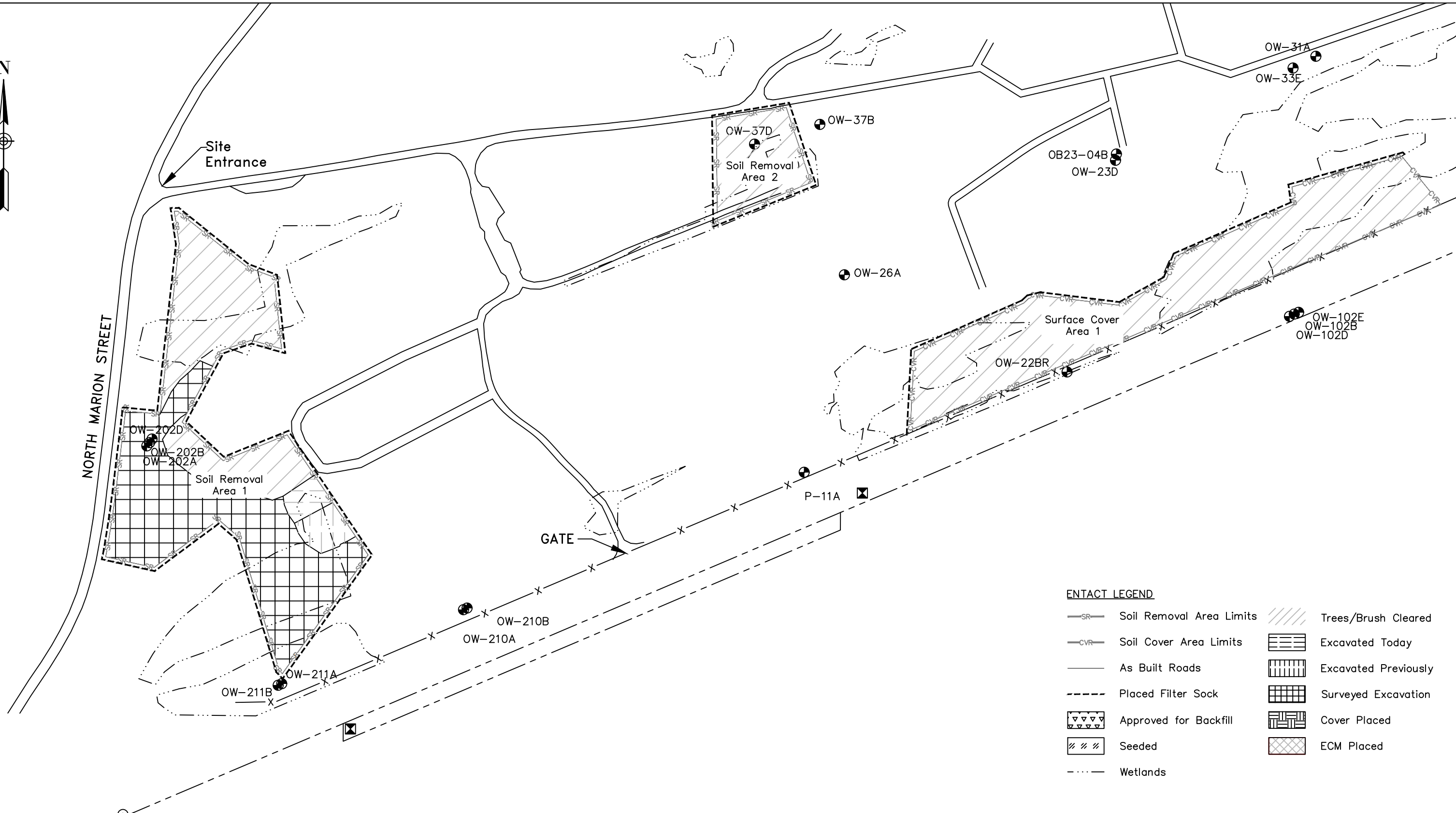
- None pending

9.0 Change in Conditions

- None

<b>Picture Number</b>	<b>1</b>	
<b>Date</b>	11/2	
<b>Direction</b>	E	
<b>Description:</b> Chipping trees in Soil Removal Area 3.		
<b>Picture Number</b>	<b>2</b>	
<b>Date</b>	11/2	
<b>Direction</b>	S	
<b>Description:</b> Dewatering ditches in Surface Cover Area 1		
<b>Picture Number</b>	<b>3</b>	
<b>Date</b>	11/4	
<b>Direction</b>	SW (towards Carbondale)	
<b>Description:</b> Loading out impacted material from Soil Removal Area 1.		

<b>Picture Number</b>	<b>4</b>	
<b>Date</b>	11/5	
<b>Direction</b>	N	
<b>Description:</b> Finished portion of Soil Removal Area 1 excavation.		
<b>Picture Number</b>	<b>5</b>	
<b>Date</b>	11/6	
<b>Direction</b>	E	
<b>Description:</b> Chipping trees in Soil Removal Area 4.		

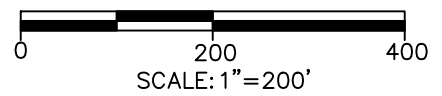


**ENTACT LEGEND**

- SR Soil Removal Area Limits
- CVR Soil Cover Area Limits
- As Built Roads
- Placed Filter Sock
- Approved for Backfill
- Seeded
- Wetlands
- Trees/Brush Cleared
- Excavated Today
- Excavated Previously
- Surveyed Excavation
- Cover Placed
- ECM Placed

REV	DATE	BY	CHK'D	APR'VD	DESCRIPTION

PREPARED FOR:  
BEAZER EAST  
PITTSBURGH, PA

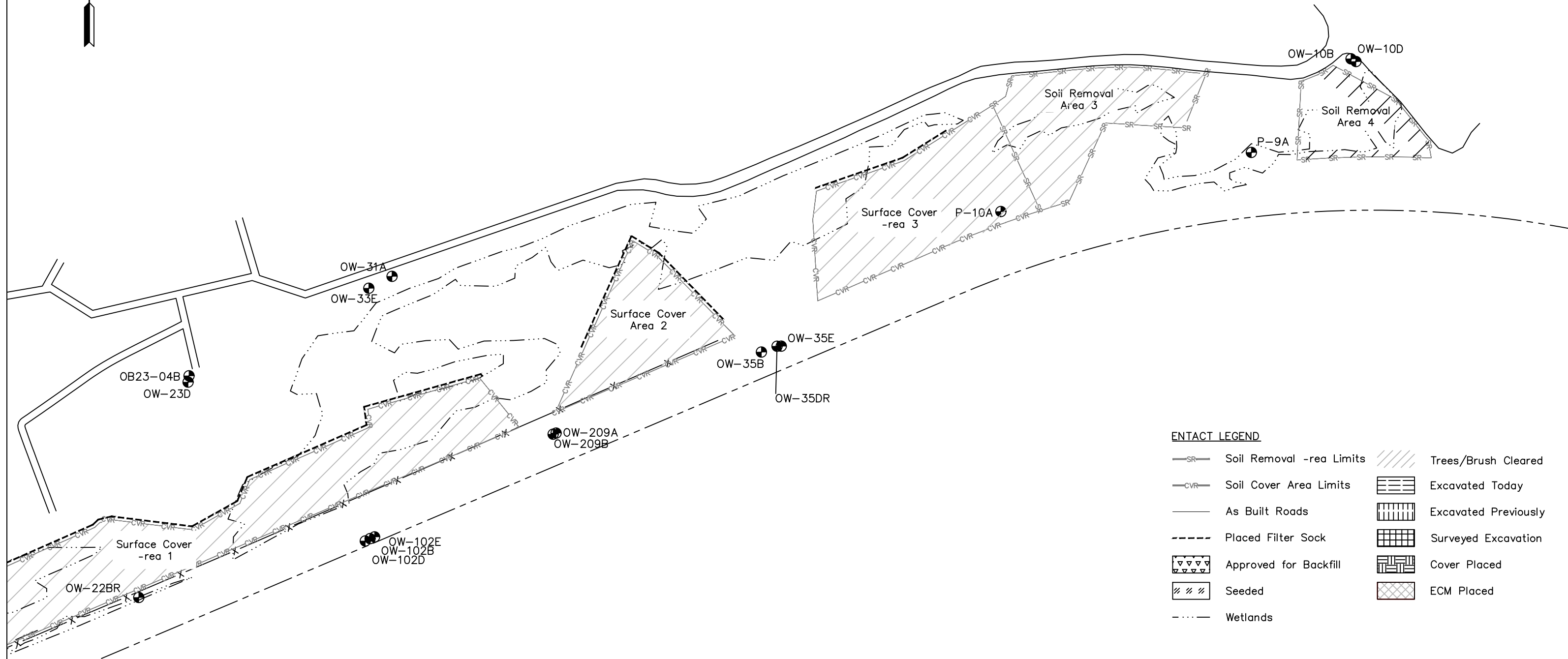


**ENTACT**

DRAWING NAME: Daily Progress Figure – Site West

PROJECT NAME & LOCATION: SOIL REMOVAL AND SURFACE COVER REMEDY  
FORMER KOPPERS WOOD-TREATING SITE  
CARBONDALE, IL

DRAWN BY	K. KLIPPSTEIN	APPROVED BY	T. MORAN	REV	0	SHEET NO.
DATE	11/7/2020	DATE		PROJECT NO.	E8658	1 OF 2



**ENTACT LEGEND**

Soil Removal -rea Limits	Trees/Brush Cleared
Soil Cover Area Limits	Excavated Today
As Built Roads	Excavated Previously
Placed Filter Sock	Surveyed Excavation
Approved for Backfill	Cover Placed
Seeded	ECM Placed
Wetlands	

REV	D-TE	BY	CHK'D	-PR'VD	DESCRIPTION

PREP-RED FOR:  
**BEAZER EAST**  
**PITTSBURGH, PA**

SCALE: 1"=200'

**ENTACT**

DR- ING N-ME

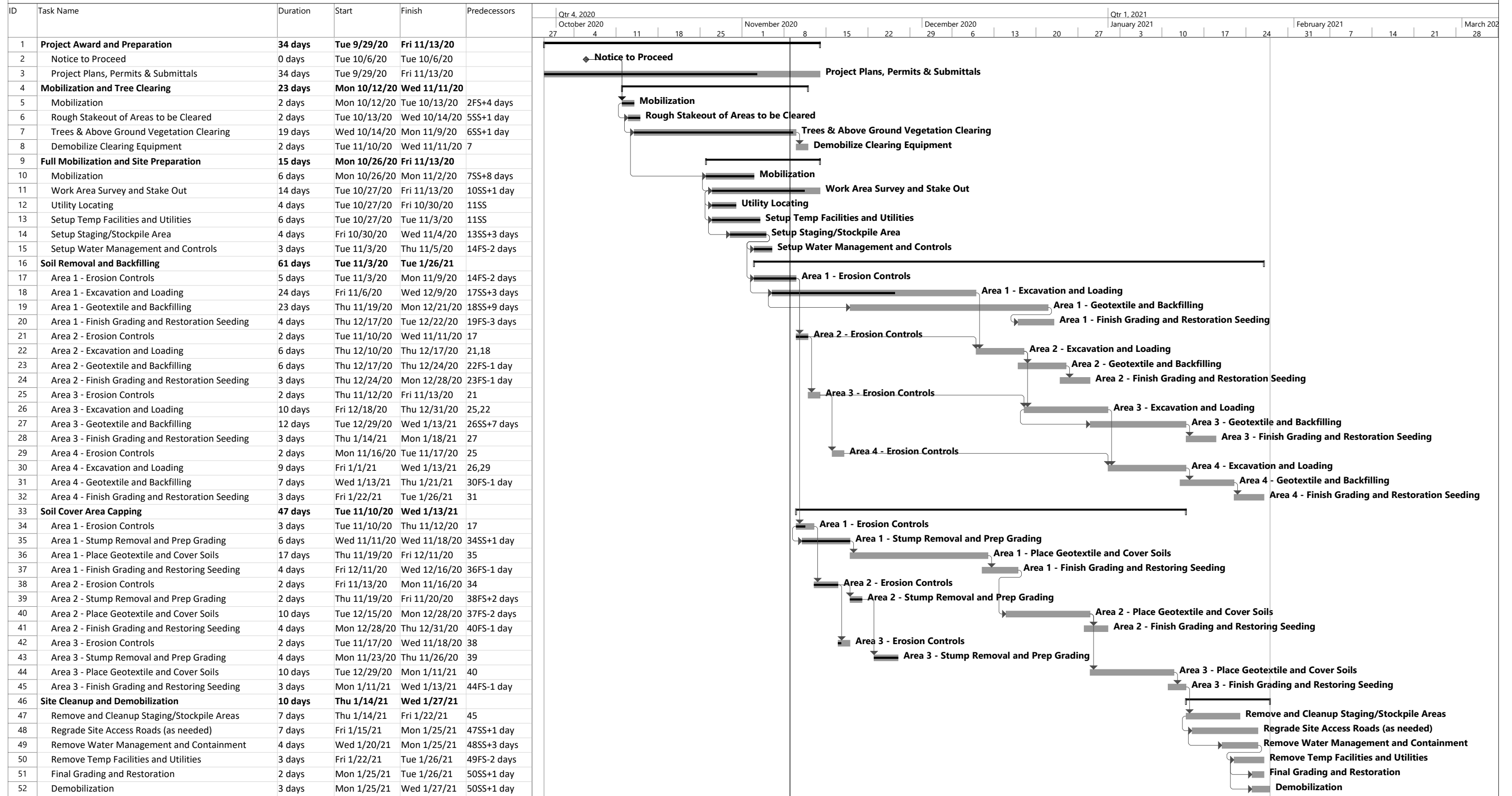
Daily Progress Figure – Site East

PROJECT N-ME & LOC-TION: SOIL REMOV-L -ND SURF-CE COVER REMEDY FORMER KOPPERS WOOD-TRE-TING SITE C-RBOND-LE, IL

DR- N BY	K. KLIPPSTEIN	-PPROVED BY	T. MOR-N	REV	0	SHEET NO.
D-TE	11/7/2020	D-TE		PROJECT NO.	E8658	2 OF 2



**Beazer East Inc.**  
**Soil Removal and Surface Cover Remedial Design**  
**Former Koppers Wood-Treating Site**  
**Carbondale, Illinois**



**ENTACT PROJECT SCHEDULE**  
**Date: Mon 11/9/20**

Task: [Solid Grey Bar] Milestone: [Diamond] Project Summary: [Thin Grey Bar] Inactive Milestone: [Thin Grey Bar with Diamond] External Milestone: [Thin Grey Bar with Diamond]

Split: [Dotted Line] Summary: [Thin Grey Bar] Inactive Task: [Thin Grey Bar] Inactive Summary: [Thin Grey Bar] Progress: [Thin Grey Bar]