

**Beazer East, Inc.**

**Former Koppers Wood-Treating Site – Carbondale, Illinois**

**Soil Removal and Surface Cover Remediation Project**

**Weekly Report #9: 12/07/20 – 12/13/20**



**Soil Removal and Surface Cover  
Former Koppers Wood-Treating Site  
Carbondale, IL**

**WEEKLY PROGRESS REPORT**

**Reporting Period:** Monday, December 7<sup>th</sup>, 2020 to Sunday, December 13<sup>th</sup>, 2020

**Progress Meeting Date:** Tuesday, December 8<sup>th</sup>, 2020

**1.0 Weather Conditions**

Date		Conditions	Wind	Precipitation (in)
Monday	12/7/20	Cloudy, 26-45 °F	6.7/NNW	0
Tuesday	12/8/20	Partly Cloudy, 24-52 °F	4.9/SE	0
Wednesday	12/9/20	Clear, 37-69 °F	3.8/WNW	0
Thursday	12/10/20	Clear, 34-71 °F	7.4/S	0
Friday	12/11/20	Overcast/Rain Overnight, 48-68 °F	10.1/SSW	0.42
Saturday	12/12/20	Partly Cloudy, 41-57 °F	11/SSW	0.11
Sunday	12/13/20	Not On-Site		0
Week Total				0.53
Site Cumulative				8.99

**2.0 Health & Safety**

Manhours Completed this Period: 749

Manhours Completed to Date: 4707

Notes

Day	Tailgate Topic(s)
Monday	Proper use and inspection of fire extinguishers
Tuesday	Reviewed Job Safety Analyses and small tool inspection
Wednesday	Hydration awareness
Thursday	Vehicle spotters while backing up at the Site
Friday	COVID-19 social distancing procedures onsite and offsite
Saturday	Gloves and knife safety
Sunday	-

**3.0 ENTACT Work Activities Summary**

<b>Monday – December 7, 2020</b>
Continued placement of geotextile in Surface Cover Area 2 in areas where no change to grade was made during subgrade preparation. Pumped contact water out of Soil Removal Area 2 (water pumped to on-site wastewater treatment plant (WWTP) with sediments removed via a filter bag). Continued excavation of the wetlands portion of Soil Removal Area 1 and stockpiled material for load out.
<b>Tuesday – December 8, 2020</b>
Continued excavation of the wetlands portion of Soil Removal Area 1 and stockpiled material for load out. Excavated material was hauled to the landfill. Continued placement of placement of general fill in Surface Cover Area 2.
<b>Wednesday – December 9, 2020</b>
Continued excavation of the wetlands portion of Soil Removal Area 1 and stockpiled material for load out. Excavated material was hauled to the landfill. Began placement of geotextile and general fill in the approved excavated portions of the wetlands portion of Soil Removal Area 1. Pumped contact water out of Soil Removal Area 1 (water pumped to on-site WWTP with sediments removed via a filter bag). Continued placement of placement of general fill in Surface Cover Area 2.
<b>Thursday – December 10, 2020</b>
Continued excavation of the wetlands portion of Soil Removal Area 1 and stockpiled material for load out. Excavated material was hauled to the landfill. Continued placement of general fill in the approved excavated portions of the wetlands portion of Soil Removal Area 1. Pumped contact water out of Soil Removal Area 1 (water pumped to on-site WWTP with sediments removed via a filter bag).
<b>Friday – December 11, 2020</b>
Continued excavation of the wetlands portion of Soil Removal Area 1 and stockpiled material for load out. Excavated material was hauled to the landfill. After trucks to the landfill stopped for the day, the remaining excavated material from Soil Removal Area 1 was relocated to Soil Removal Area 3 for stockpiling and future loadout. Continued placement of general fill and vegetative cover in the approved excavated portions of the wetlands portion of Soil Removal Area 1. Pumped contact water out of Soil Removal Area 1 (water pumped to on-site WWTP with sediments removed via a filter bag).
<b>Saturday – December 12, 2020</b>
Continued excavation of the wetlands portion of Soil Removal Area 1 and stockpiled material for load out in Soil Removal Area 3. Continued placement of general fill and vegetative cover in the approved excavated portions of the wetlands portion of Soil Removal Area 1. Pumped contact water out of Soil Removal Area 1 and Soil Removal Area 2 (water pumped to on-site WWTP with sediments removed via a filter bag). Began placement of geotextile in Soil Removal Area 2.
<b>Sunday – December 13, 2020</b>
Not On-Site

4.0 ENTACT Subcontractors

Date	Subcontractor/Vendor/ Third Party	Work Activity
12/8/2020	Shawnee Professional Services	Surveyed Soil Removal Area 1 wetlands portion excavation
12/9/2020	United Rentals	Repair of pump
12/10/2020	Shawnee Professional Services	Surveyed Soil Removal Area 1 wetlands portion excavation

5.0 ENTACT Deliveries

Equipment - Mobilization		
Date	Description	Quantity
12/7/2020	CAT Dozer D6	1
12/7/2020	Street Sweeper	1

Equipment - Demobilization		
Date	Description	Quantity
12/11/2020	CAT Dozer D6	1

Material Import – Current Week		
Date	Description	Quantity
12/8/2020	General Fill	1094 tons
12/9/2020	General Fill	1517 tons
12/10/2020	General Fill	1470 tons
12/11/2020	General Fill/Vegetative Cover	1352 tons
12/12/2020	General Fill/Vegetative Cover	1577 tons

Material Import – To Date	
Description	Quantity
General Fill	23887.60 tons
General Fill/Vegetative Cover	2929.55 tons
CA-2	1886.14 tons
Demarcation Fabric	405000 SF
Filter Sock	10230 LF
RipRap-1	133.37 tons

6.0 Material Export

Material Import – Current Week		
Date	Description	Quantity
12/8/2020	Impacted Soils	1359.38 tons
12/9/2020	Impacted Soils	1254.15 tons
12/10/2020	Impacted Soils	1257.02 tons
12/11/2020	Impacted Soils	959.80 tons

Material Export – To Date	
Description	Quantity
Impacted Soils	22551.85 tons

**7.0 Construction Quality Control**

See Attached Reports and Logs:



- Progress Photos
- Progress Map
- Current Project Schedule

**8.0 Request for Information (RFIs)**

- RFI 001 – Stabilized Construction Entrance Aggregate (Approved)
- None pending

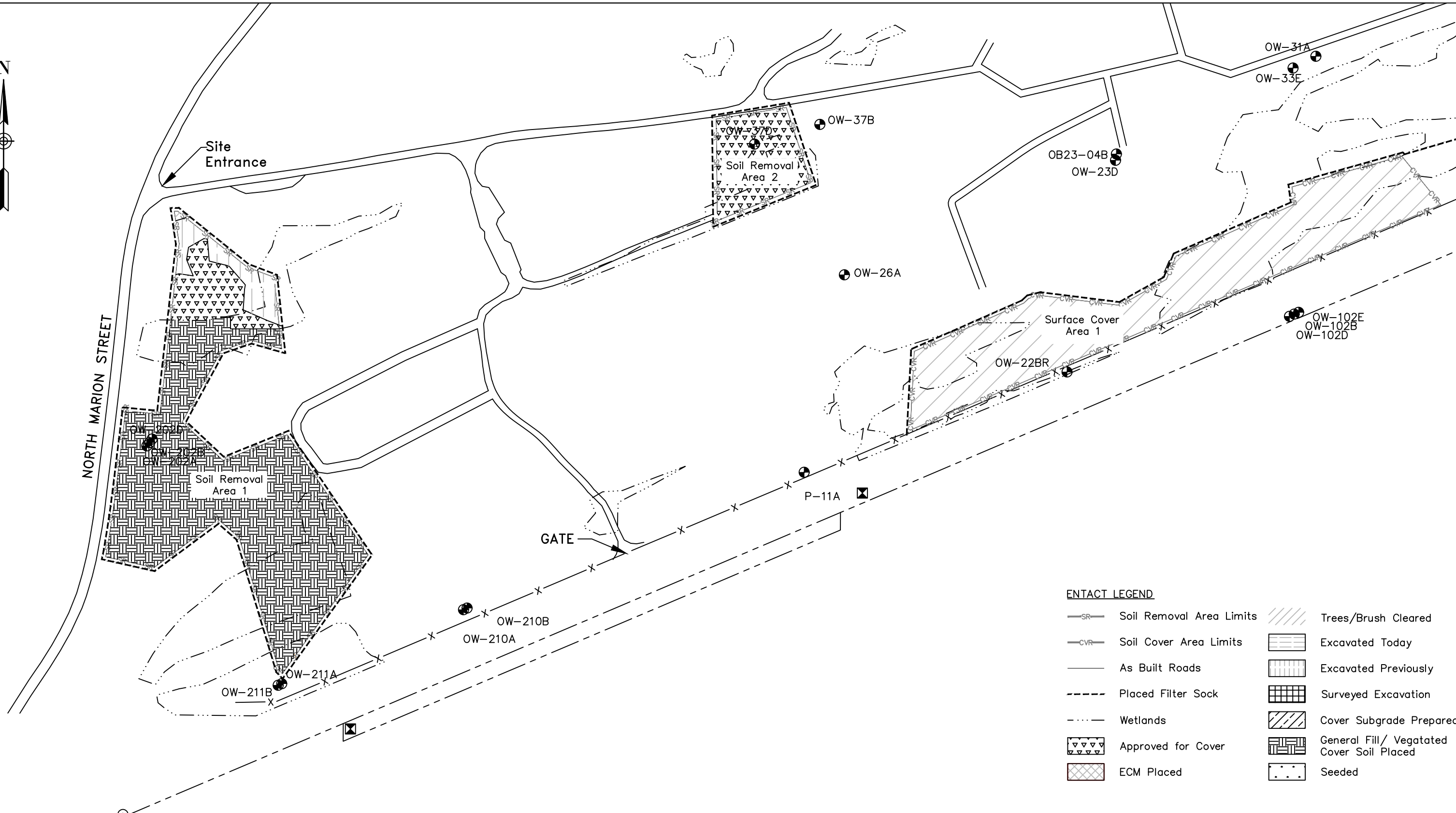
**9.0 Change in Conditions**

- Borrow material from Shawnee Sand and Gravel corresponding to samples GF-03 and GF-04 was approved for use as both General Fill and Vegetative Cover Soil (per Submittal 019A). Previously, borrow material from Shawnee Sand and Gravel corresponding to sample GF-02 was approved for use as General Fill only (per Submittal 011).

<b>Picture Number</b>	<b>1</b>	
<b>Date</b>	12/7	
<b>Direction</b>	S	
<b>Description:</b> Geotextile fabric being placed over Surface Cover Area 2.		
<b>Picture Number</b>	<b>2</b>	
<b>Date</b>	12/8	
<b>Direction</b>	S	
<b>Description:</b> General fill being placed in Surface Cover Area 2.		



<b>Picture Number</b>	<b>3</b>	
<b>Date</b>	12/10	
<b>Direction</b>	SE	
<b>Description:</b> Soil Removal Area 1 excavation.		
<b>Picture Number</b>	<b>4</b>	
<b>Date</b>	12/11	
<b>Direction</b>	S	
<b>Description:</b> General fill placed in Soil Removal Area 1.		

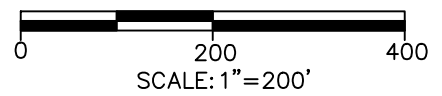


**ENTACT LEGEND**

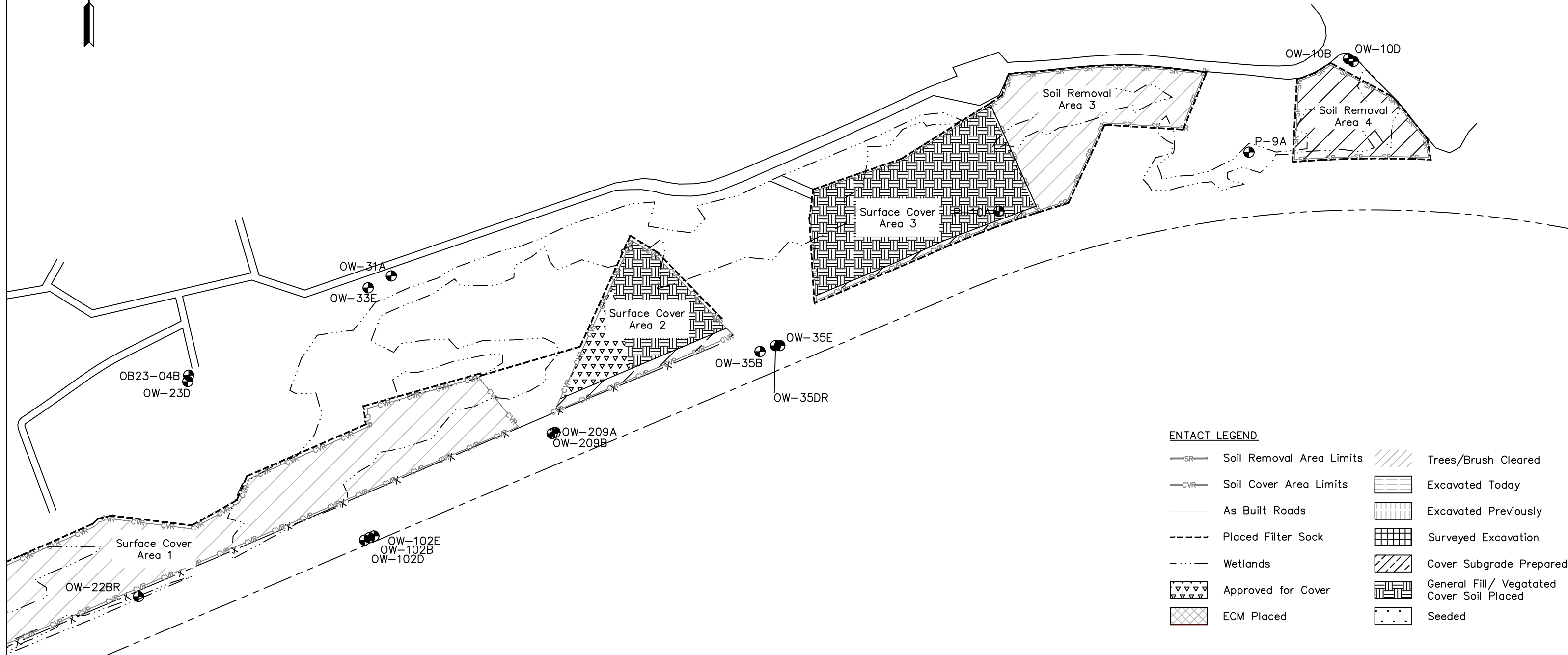
- Soil Removal Area Limits
- Soil Cover Area Limits
- As Built Roads
- Placed Filter Sock
- Wetlands
- Approved for Cover
- ECM Placed
- Trees/Brush Cleared
- Excavated Today
- Excavated Previously
- Surveyed Excavation
- Cover Subgrade Prepared
- General Fill/ Vegetated Cover Soil Placed
- Seeded

REV	DATE	BY	CHK'D	APR'VD	DESCRIPTION

PREPARED FOR:  
 BEAZER EAST  
 PITTSBURGH, PA



DRAWING NAME						Daily Progress Figure – Site West					
PROJECT NAME & LOCATION						SOIL REMOVAL AND SURFACE COVER REMEDY FORMER KOPPERS WOOD-TREATING SITE CARBONDALE, IL					
DRAWN BY	K. KLIPPSTEIN	APPROVED BY	T. MORAN	REV	0	SHEET NO.					
DATE	12/12/2020	DATE		PROJECT NO.	E8658	1 OF 2					



**ENTACT LEGEND**

Soil Removal Area Limits	Trees/Brush Cleared
Soil Cover Area Limits	Excavated Today
As Built Roads	Excavated Previously
Placed Filter Sock	Surveyed Excavation
Wetlands	Cover Subgrade Prepared
Approved for Cover	General Fill/ Vegetated Cover Soil Placed
ECM Placed	Seeded

REV	DATE	BY	CHK'D	APR'VD	DESCRIPTION

PREPARED FOR:  
**BEAZER EAST**  
**PITTSBURGH, PA**

SCALE: 1"=200'

**ENTACT**

DRAWING NAME: **Daily Progress Figure - Site East**

PROJECT NAME & LOCATION: **SOIL REMOVAL AND SURFACE COVER REMEDY  
FORMER KOPPERS WOOD-TREATING SITE  
CARBONDALE, IL**

DRAWN BY	K. KLIPPSTEIN	APPROVED BY	T. MORAN	REV	0	SHEET NO.
DATE	12/12/2020	DATE		PROJECT NO.	E8658	2 OF 2



**Beazer East, Inc.**  
**Soil Removal and Surface Cover Remedial Design**  
**Former Koppers Wood-Treating Site**  
**Carbondale, Illinois**

