

# \_\_\_\_\_

RECEIVED: October 11, 2006  
REVIEW: October 12, 2006  
SUBMITTED: October 25, 2006

COLORADO RIVER INDIAN TRIBES  
MUSEUM

Archeological Review Report

PROPOSAL: West States

TWP \_\_\_\_\_ R. \_\_\_\_\_ Sec. \_\_\_\_\_  
\_\_\_\_\_ 1/4 of \_\_\_\_\_ 1/4

LOCATION: Parker, Arizona  
SUBMITTED: Lisa Swick, Jon Nopah, Wilmer Yazzie III  
THROUGH: Michael Tsosie, Museum Director

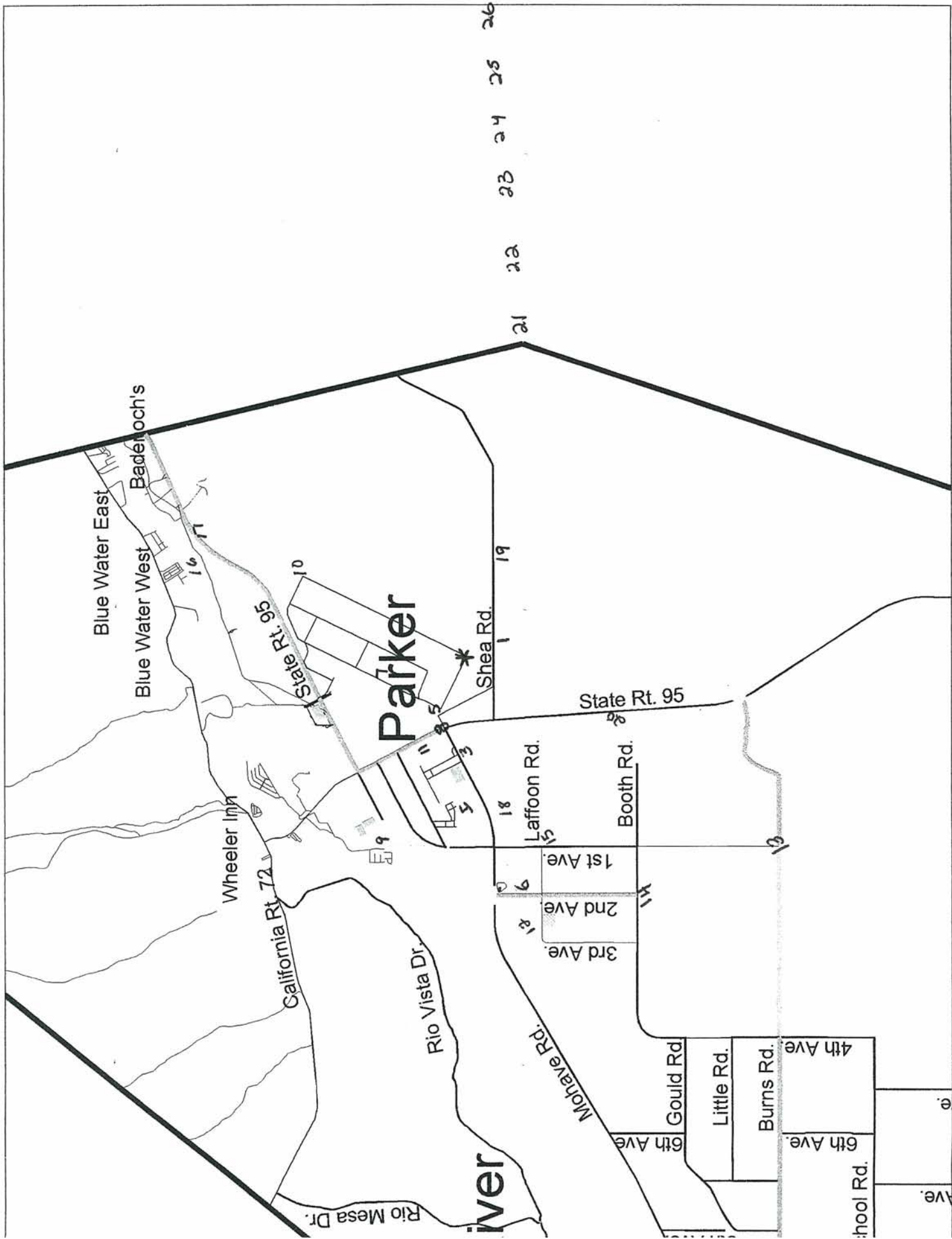
PREVIOUS DESIGNATIONS: N/A

SITE DESCRIPTION: Photo #1 is a picture of West States Facility a half mile up Shea Road. Photo # 2 is a picture of West States Facility from 5 mile hill. Photo # 3 is a picture of West States Facility from the La Paz Hospital parking lot. Photo # 4 is a picture of West States Facility from the Bus Barn on (Navajo St.). Photo # 5 is a picture of West States from the Parker Cemetery. Photo # 6 is a picture taken from the C.R.I.T. jail towards the West States Facility. Photo # 7 is a picture of West States Facility taken from behind the Dairy Queen. Photo # 8 is a picture of West States Facility from the corner of Hwy. 95 & California Ave. Photo # 9 is a picture of West States Facility from Parker Indian Health Service parking lot. Photo #10 is a picture taken 1 mile north from the West States facility. Photo # 11 is a picture taken from Coffee Erns parking lot. Photo # 12 is a picture taken from the C.R.I.T. Cemetery towards the West States Facility. Photo # 13 is taken from 1<sup>st</sup> Ave. & Burns Road. Photo # 14 is a picture taken from 2<sup>nd</sup> Ave. & Booth Road. Photo # 15 is a picture taken from 1<sup>st</sup> Ave. & Laffoon Road. Photo # 16 is taken from the four way stop sign by Blue Water Casino. Photo # 17 is a picture taken from the stop light on Casino Drive towards the West States Facility. Photo # 18 is a picture taken one mile west of the West State Facility. Photo # 19 is taken one mile east of Shea Road towards the West States Facility. Photo # 20 is taken one mile south of the West States Facility. Photo # 21 is taken 0.5 mile up from P Mountain towards the West States Facility. Photo # 22 is taken 1.0 mile up from P Mountain. Photo # 23 is taken 1.5 miles up from P Mountain. Photo # 24 is taken 2.0 miles up from P Mountain. Photo # 25 is taken 2.5 miles up from P Mountain. Photo # 26 is taken 3.0 miles up from P Mountain. Photo # 27 is a picture taken from the top of P Mountain down towards the West States Facility. Photos # 28-30 are survey markers that were found on the way up P Mountain.

WALK-OVER RESULTS: Walk-over completed, site staked and marked. Site has been photographed.

RECOMMENDATION/REMARKS: Walk-Over completed.

ATTACHMENTS: See photos



Parker

Blue Water East  
Blue Water West  
Badenoch's

Wheeler Inn

California Rt. 72  
State Rt. 95

Rio Vista Dr.

Rio Mesa Dr.

iver

Mohave Rd.

Laffoon Rd.

Booth Rd.

Gould Rd.

Little Rd.

Burns Rd.

4th Ave.  
6th Ave.  
School Rd.

Shea Rd.

State Rt. 95

21 22 23 24 25 26 27





0 5 Miles East on Shea Road





Photo 2

State Rt. Hwy. 95 3 Miles un





Photo 3 Laz Paz Regional Hospital





Photo 4 Bus Barn on Navajo Street



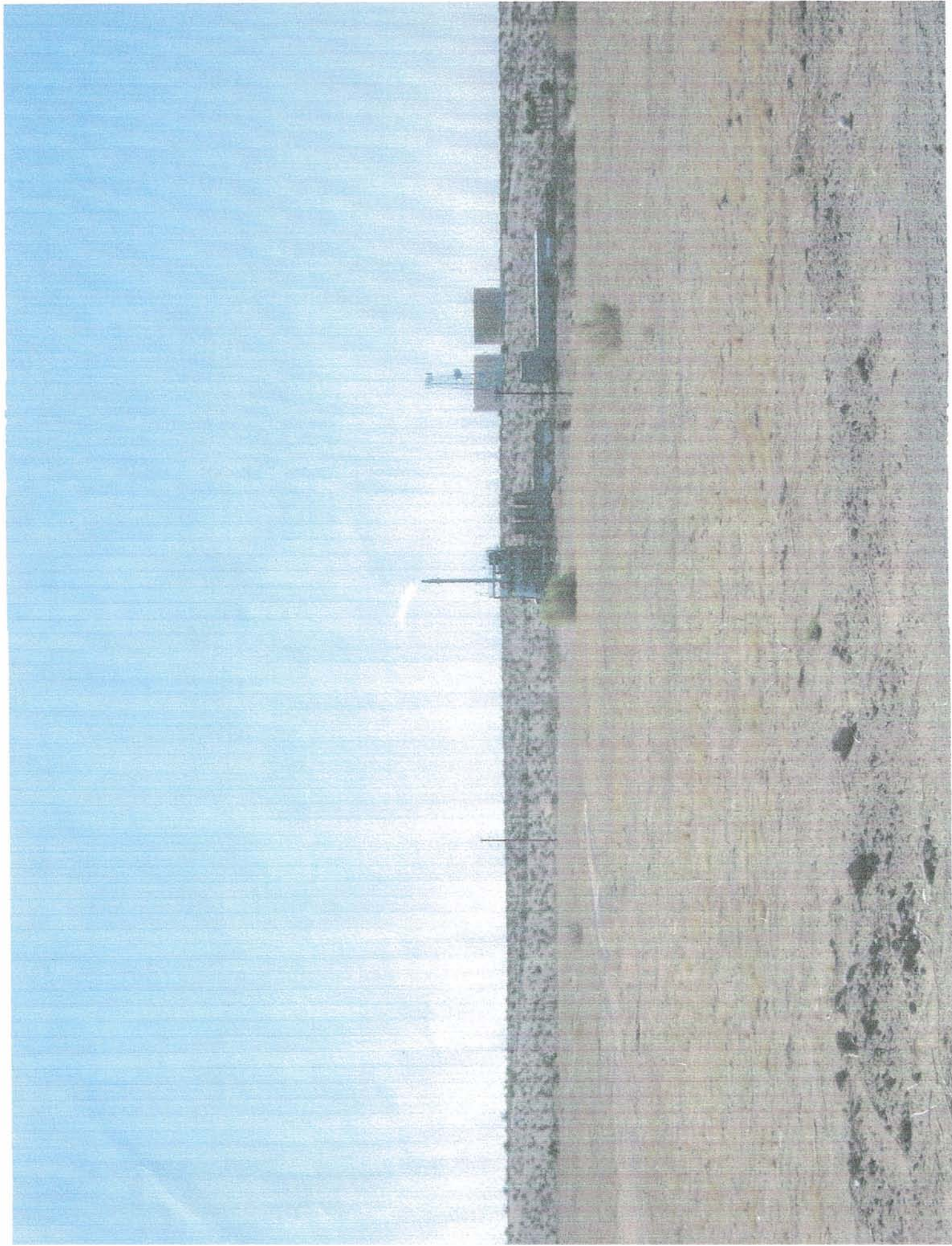


Photo 5 Parker Cemetery





Photo 6 C.R.I.T. Jail





Photo 7 (1101 California Ave.) Dairy Queen





Photo 8 Hwy. 95 & California Ave.





Photo 9 Parker Indian Health Service Parking Lot



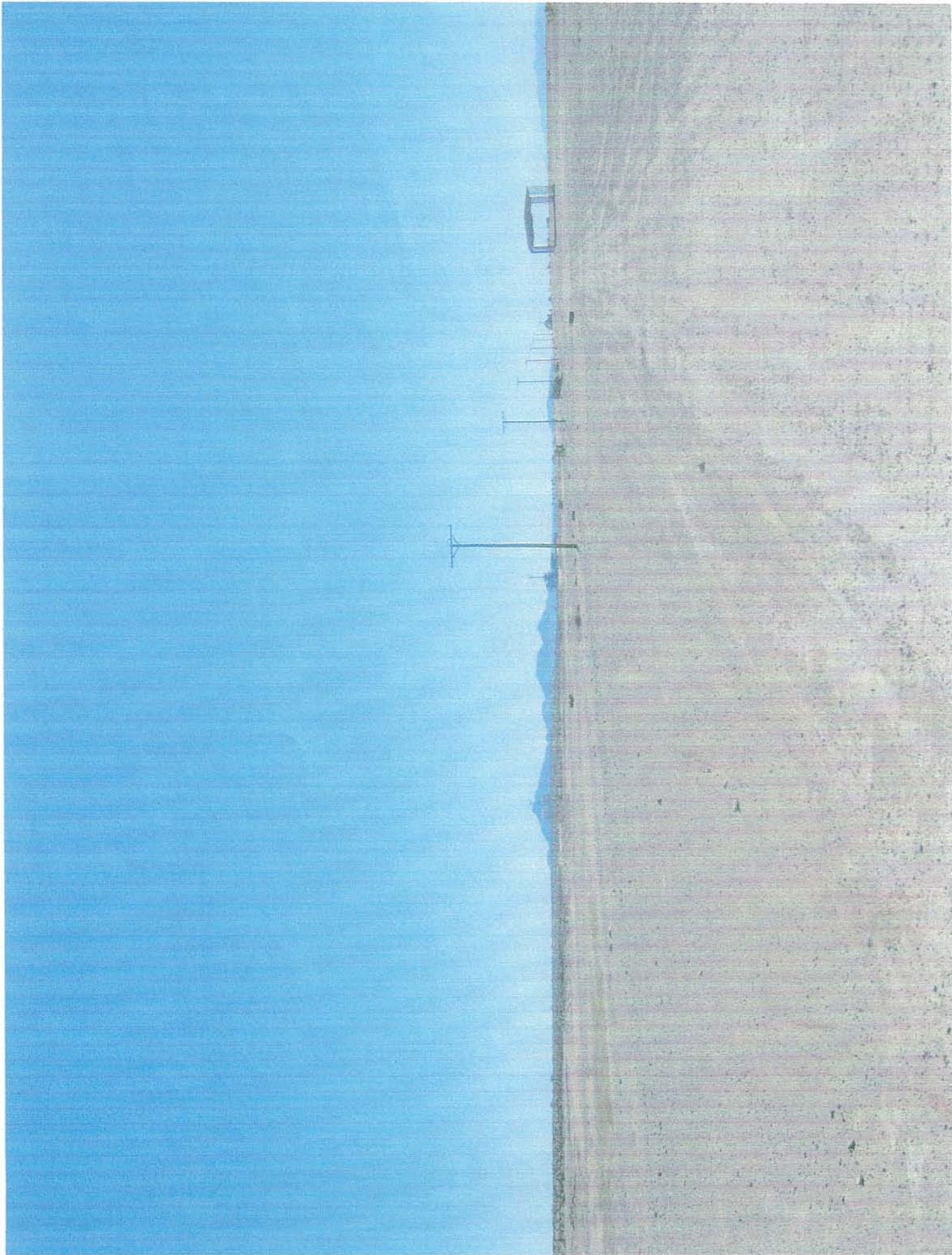


Photo 10 1 Mile North of Facility





Photo 11 Coffee Erns Parking Lot





Photo 12 C R T T Cemetery



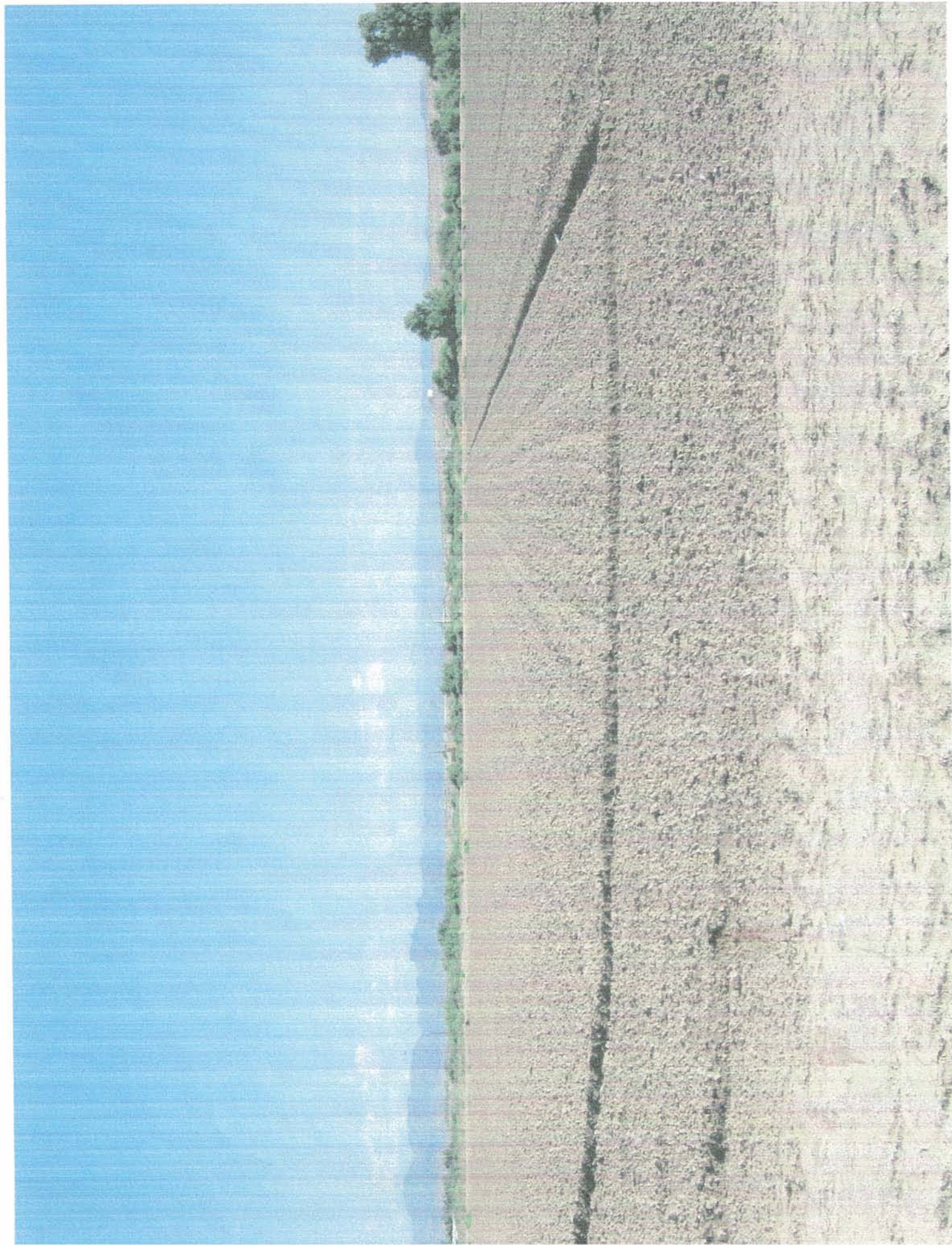


Photo 13 1st. Ave. & Burns Rd.



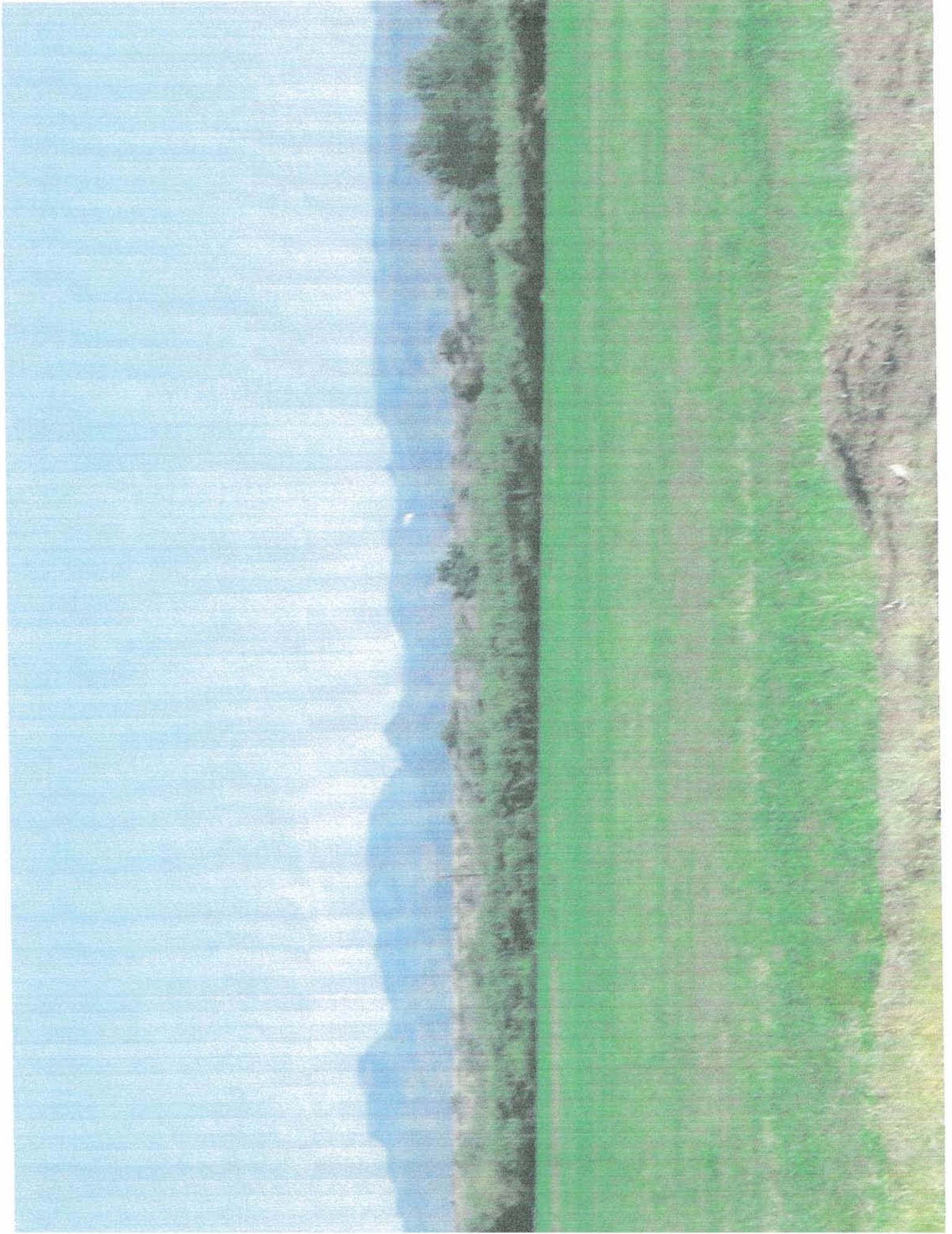


Photo 14

2nd. Ave. & Booth Rd.





Photo 15 1st. Ave. & Laffoon Rd.





photo 16 Casino Drive at the Four Way Stop Sign



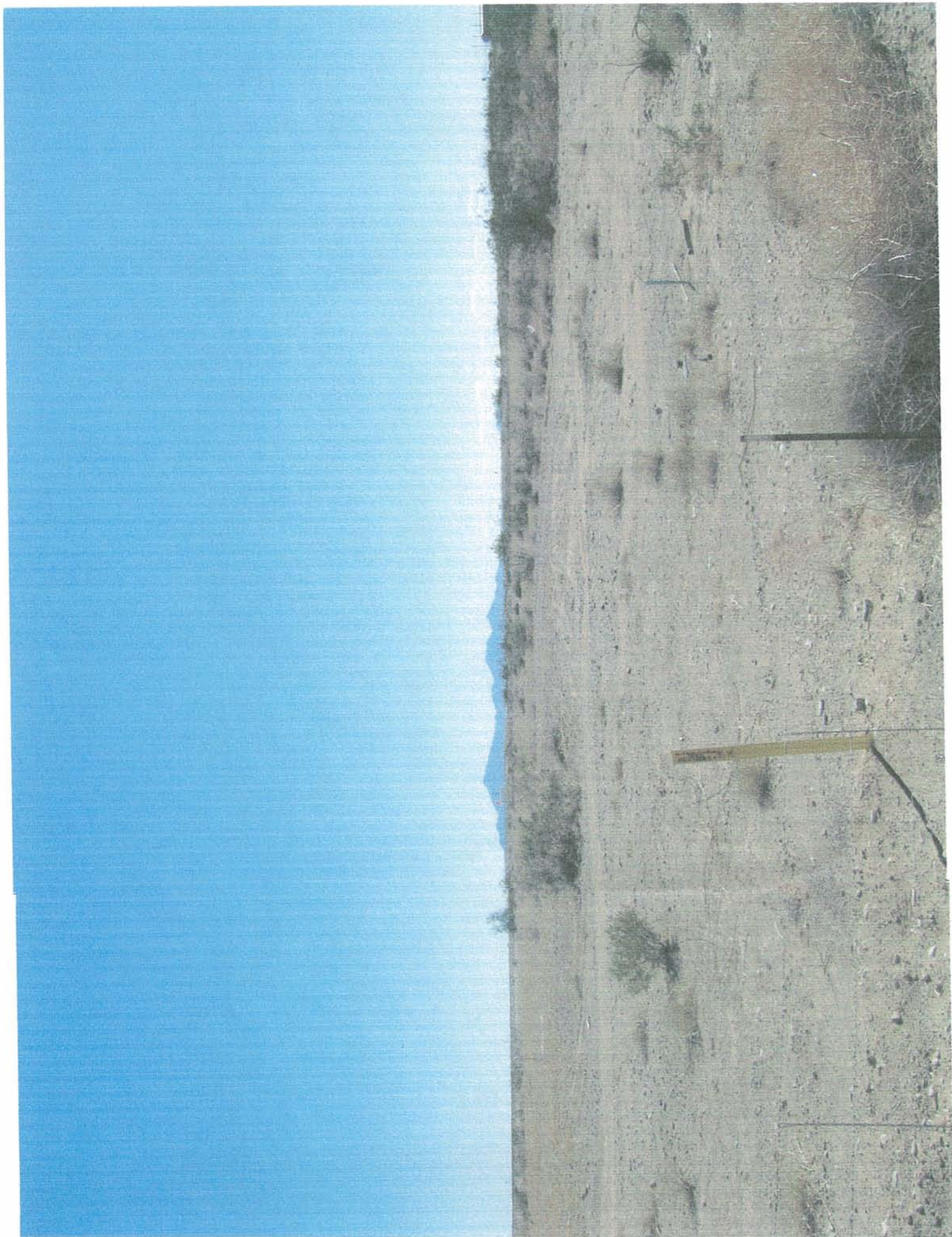


Photo 17 Casino Drive at the Stop Light

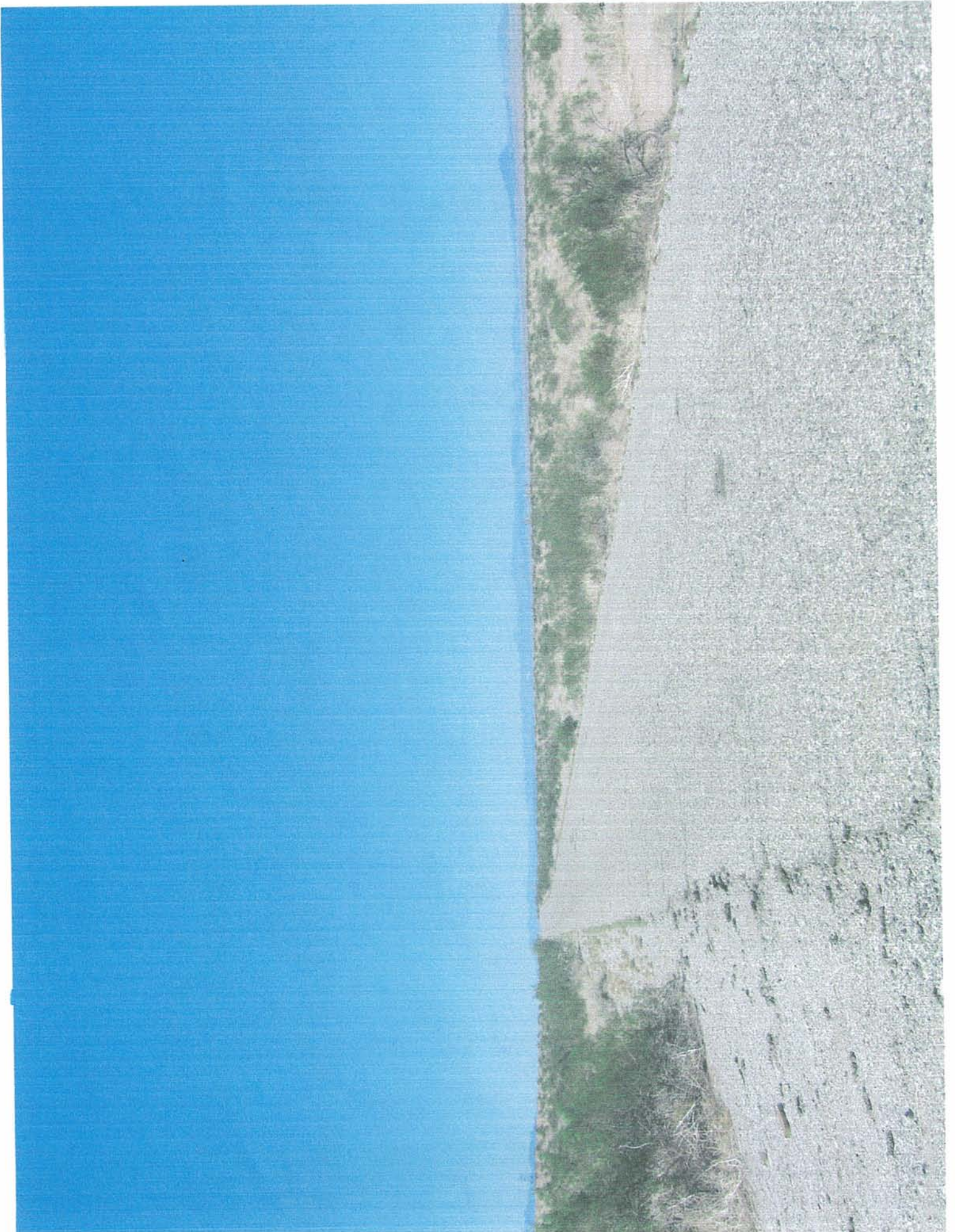




Photo 18

1 Mile West of the Facility







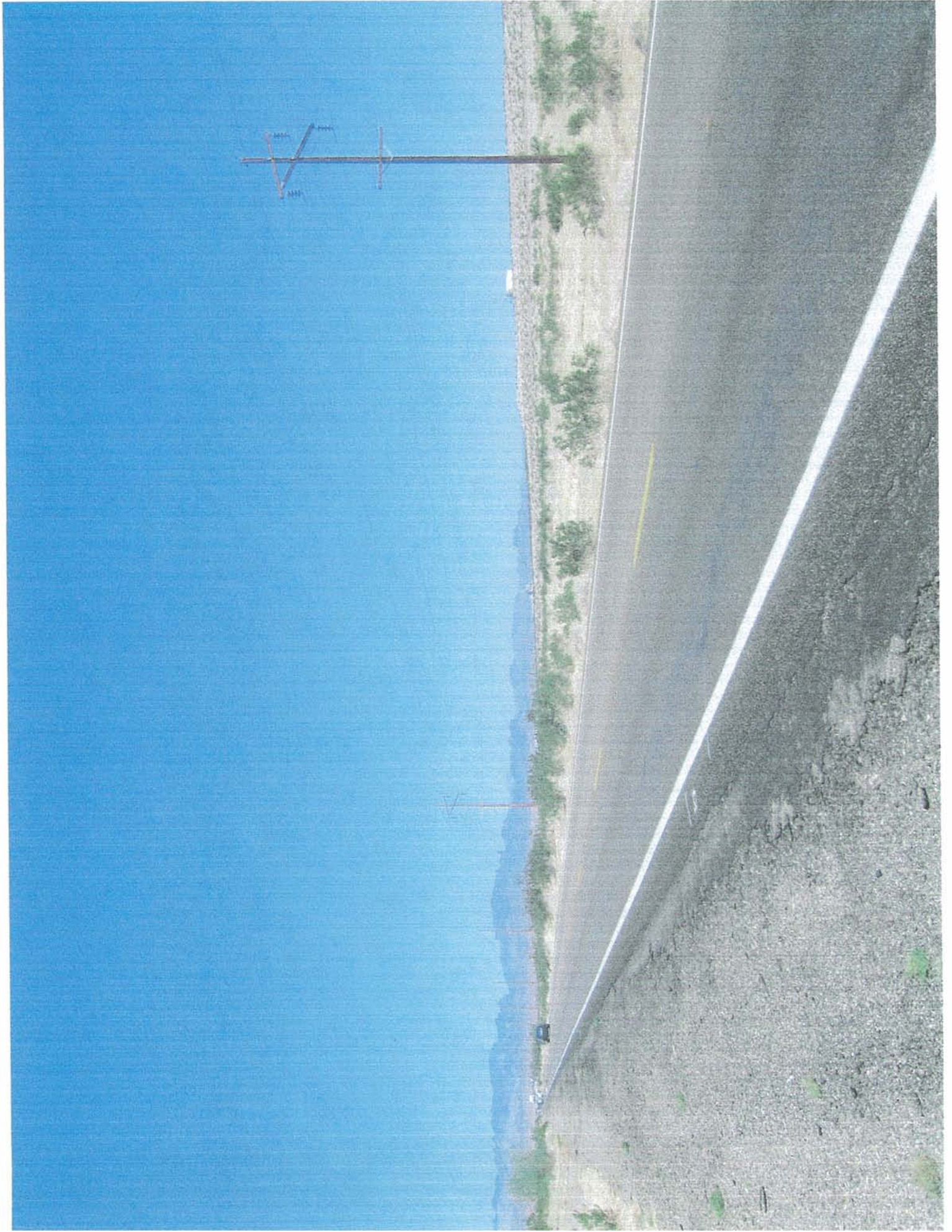
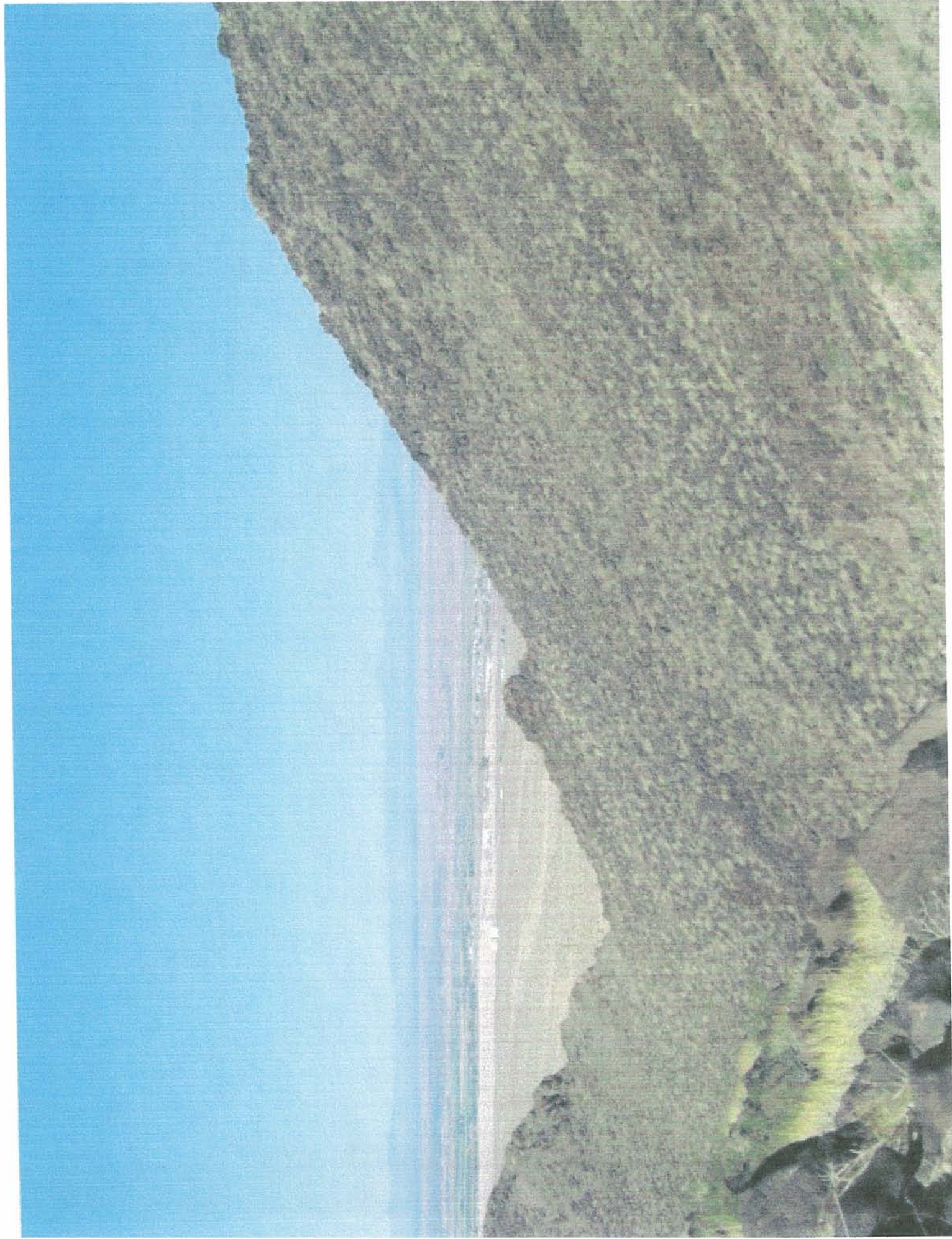


Photo 20 1 Mile South of the Facility





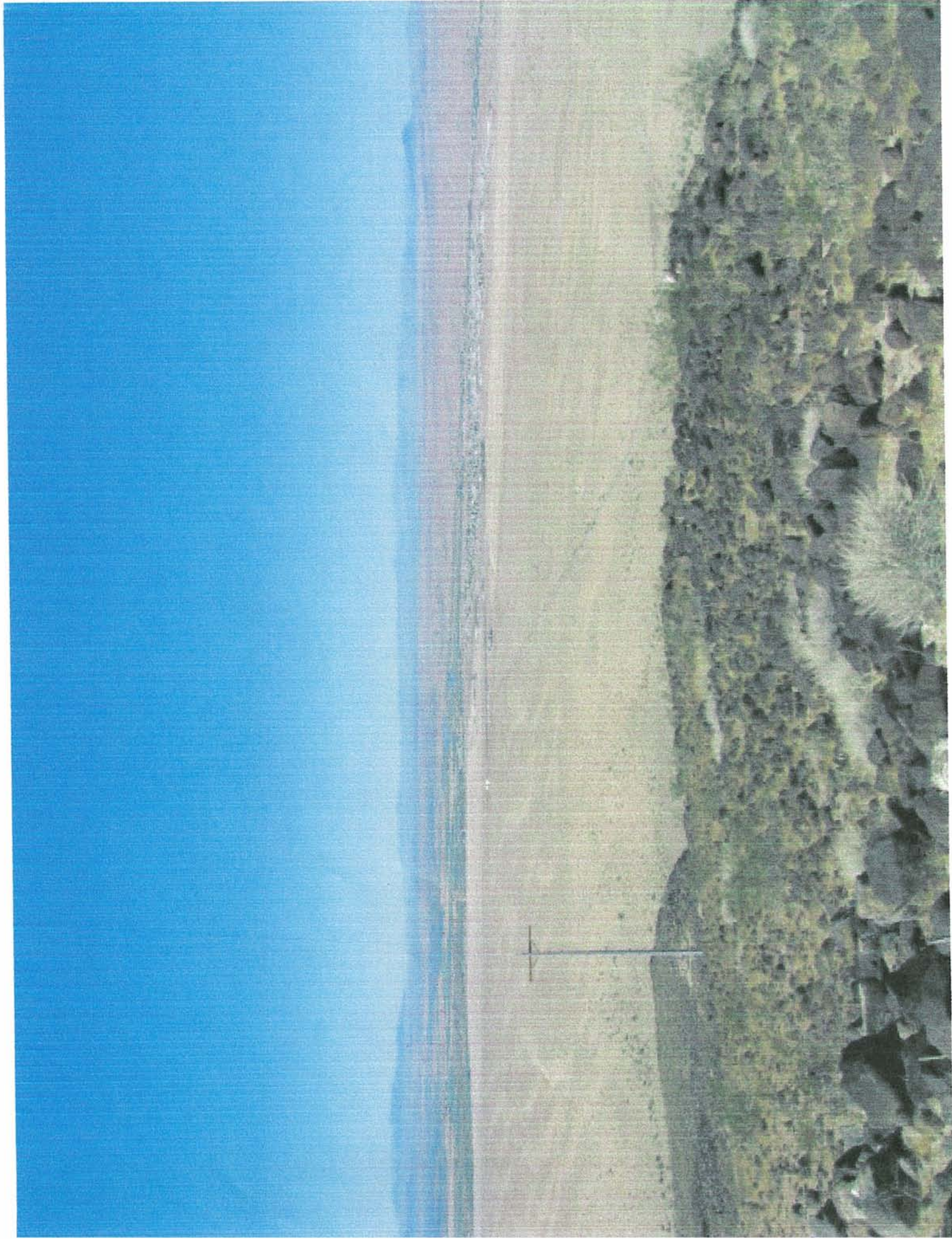
0.5 Mile up BLACK PEAK MOUNTAIN





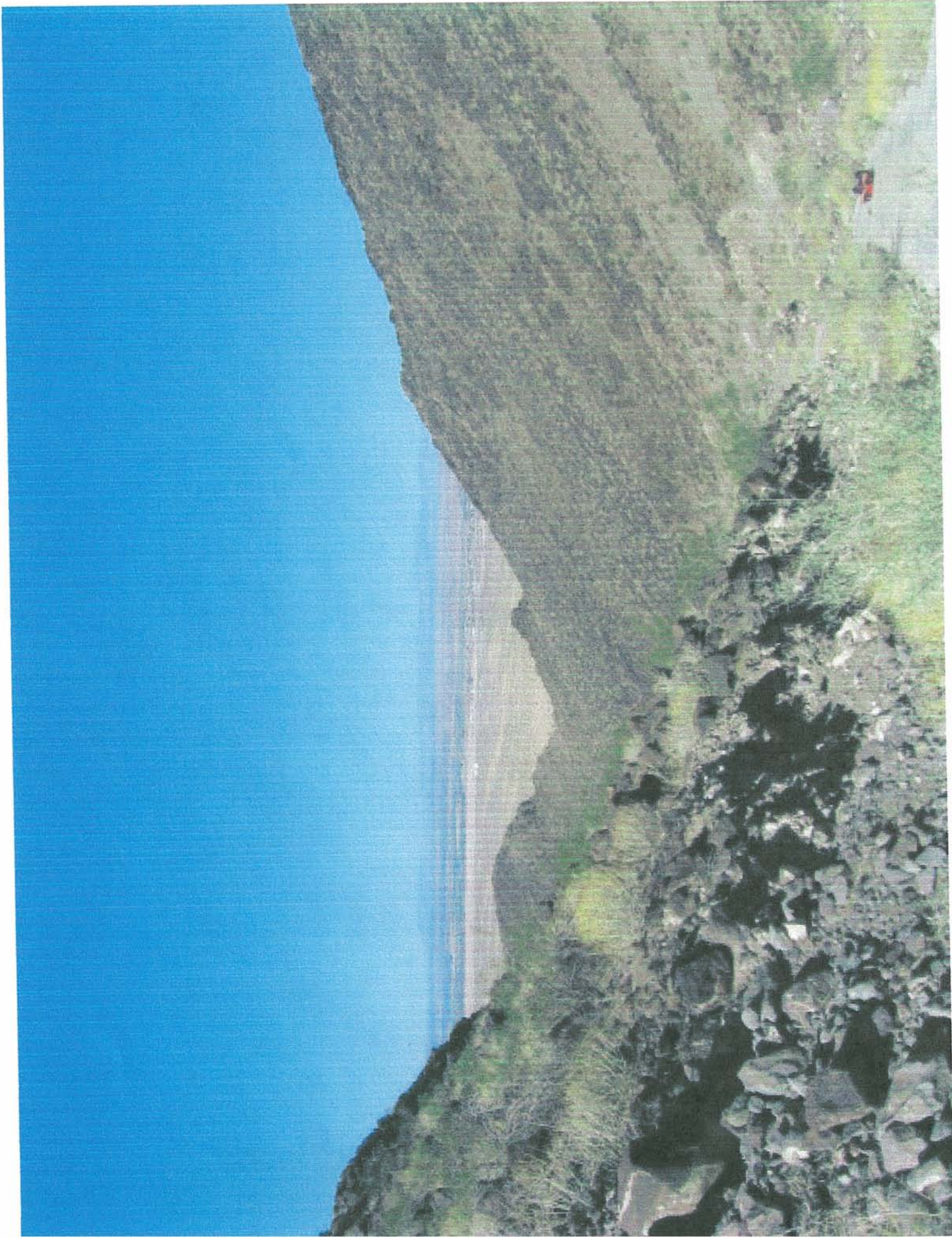
1.0 Mile up BLACK PEAK MOUNTAIN





1.5 Miles up BLACK PEAK MOUNTAIN





2.0 Miles up BLACK PEAK MOUNTAIN



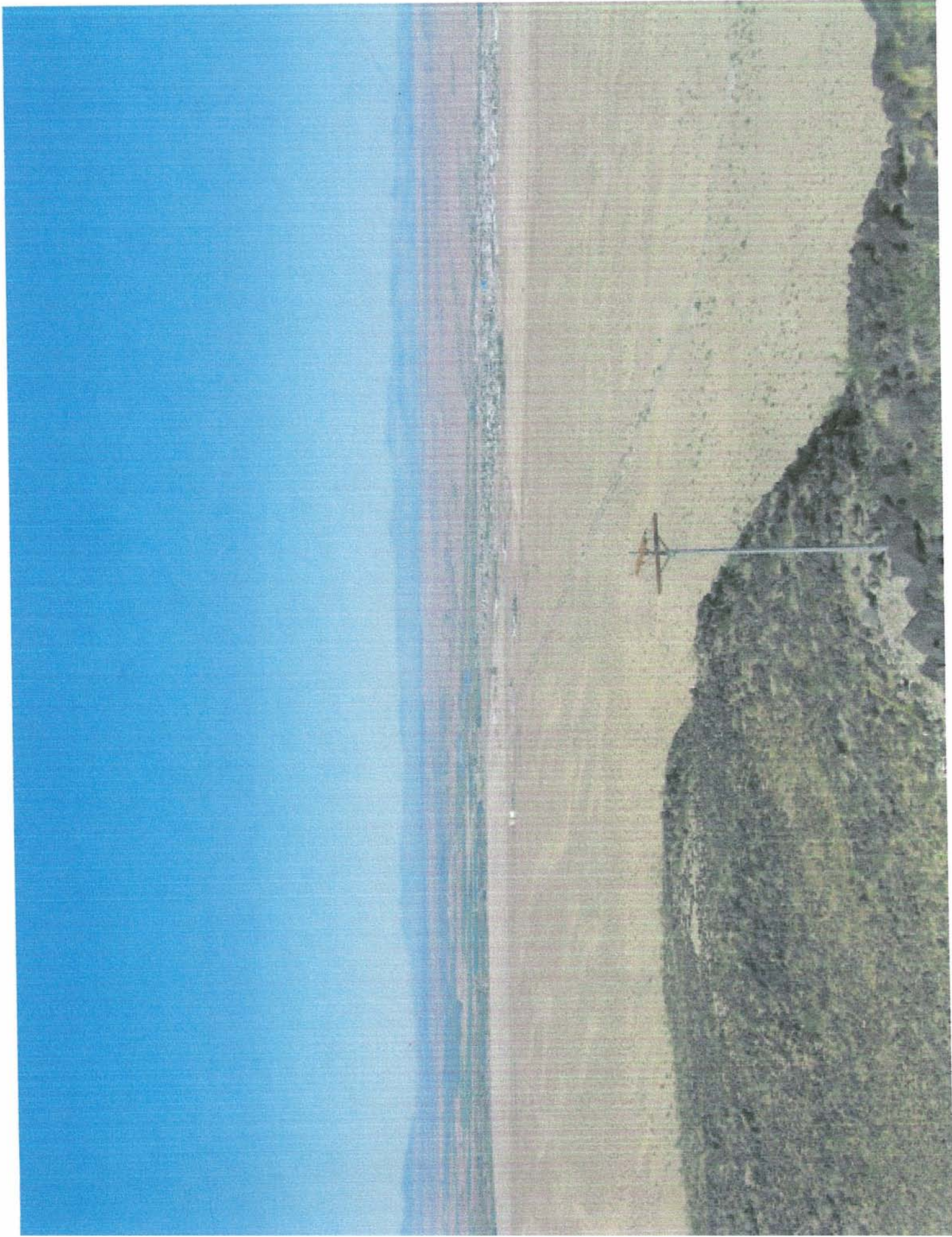
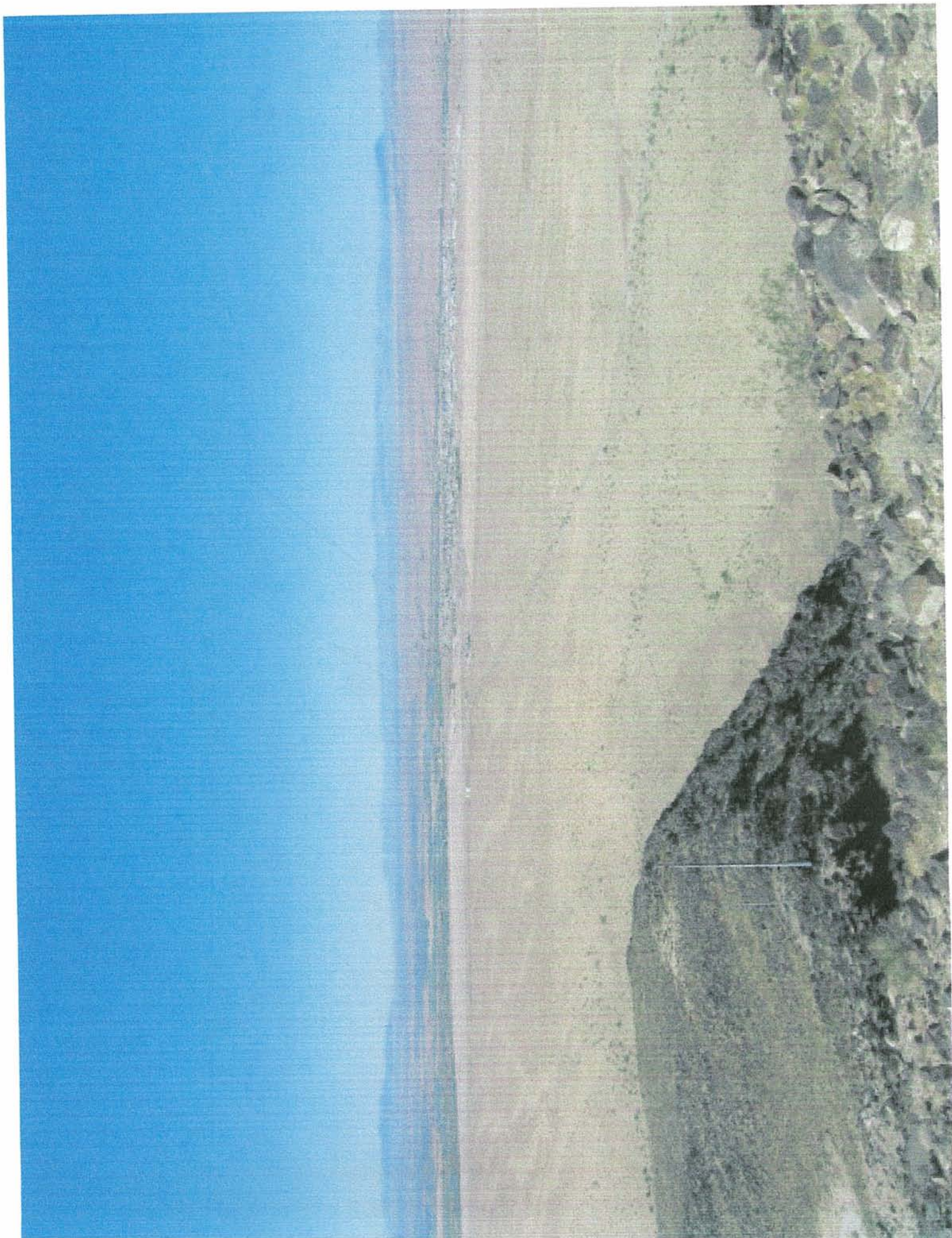
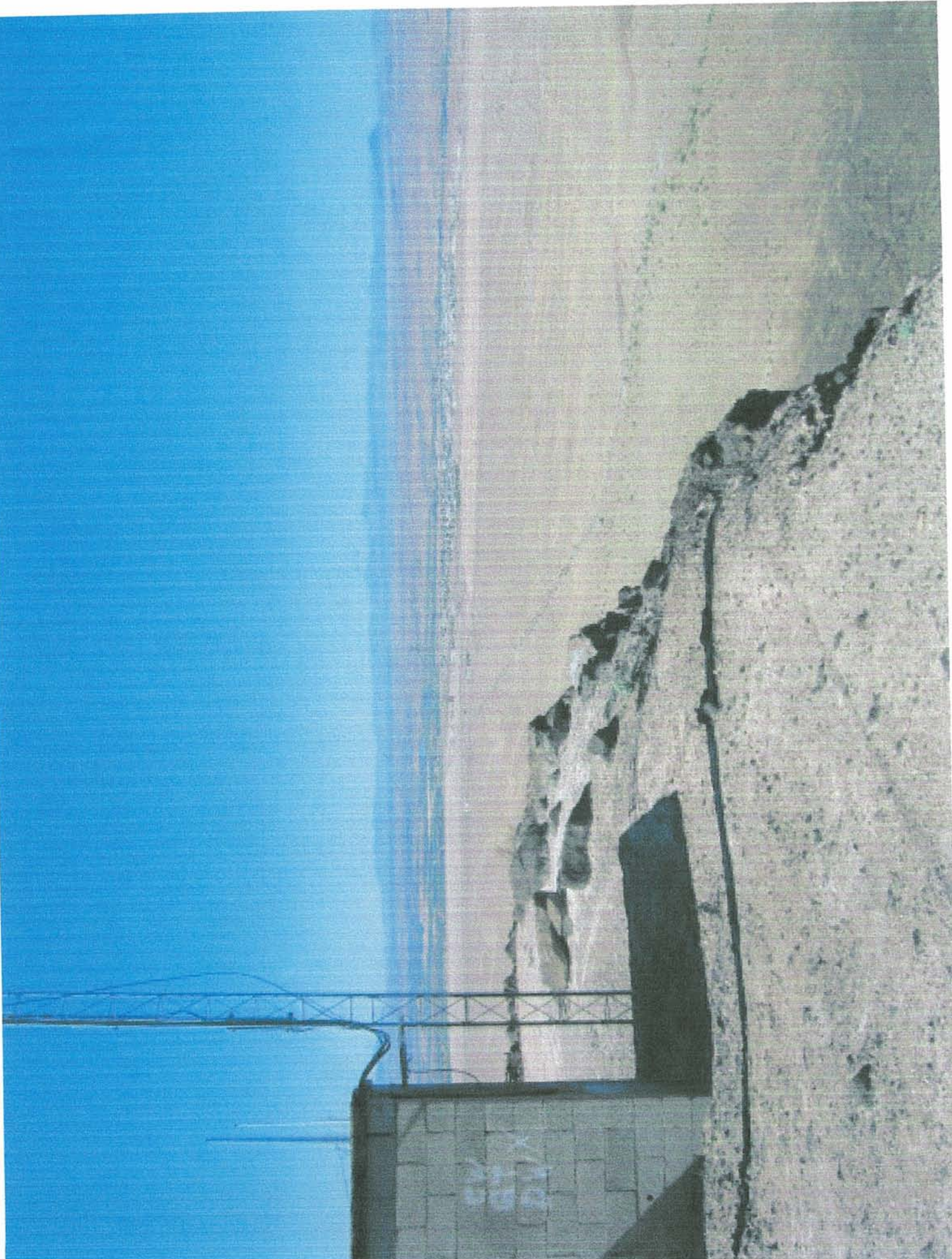


Photo 25      2.5 Miles up BLACK PEAK MOUNTAIN













Reference Marker No. 1 on Black Peak Mountain





Reference Marker No. 2 on Black Peak Mountain





Reference Marker No. 2 on Black Peak Mountain