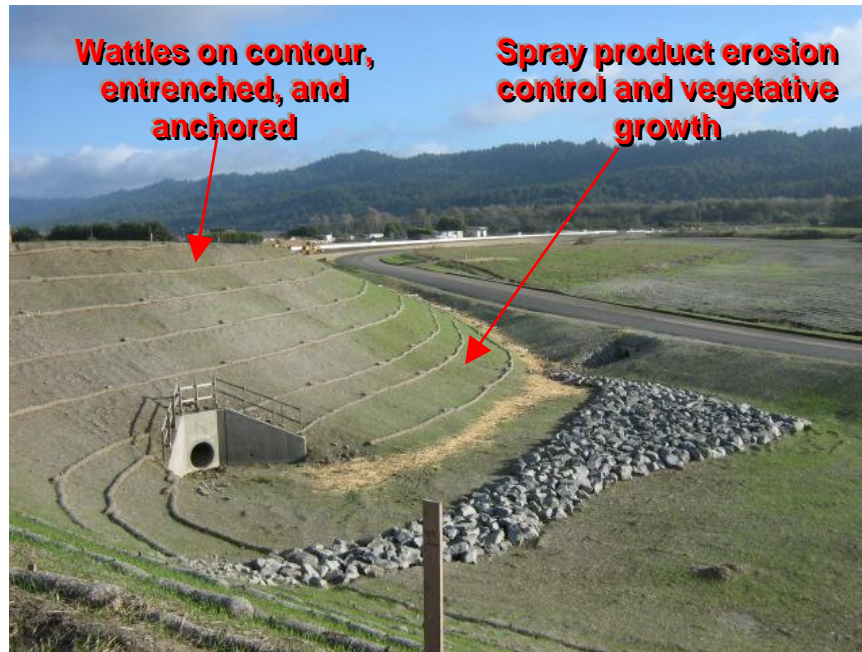


Appendix C

Photograph Log



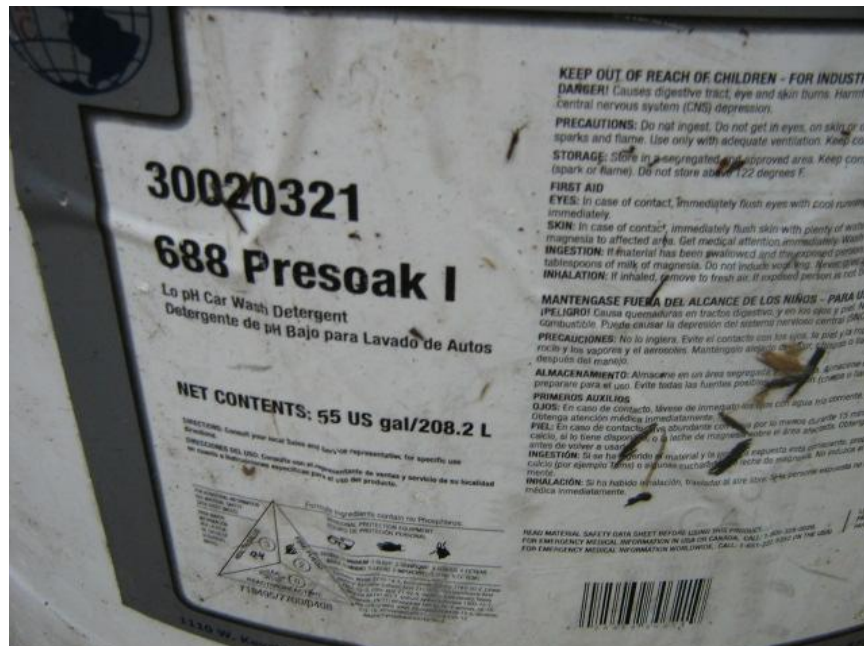
Photograph 1. Alton Interchange Project – Combination of multiple erosion and sediment controls



Photograph 2. Alton Interchange Project – Combination of multiple erosion and sediment controls



Photograph 3. District 2 Red Bluff Slab Project – Open drum of detergent along the highway storm water conveyance system. (Note: Drum appeared empty, possibly due to the missing bung)



Photograph 4. District 2 Red Bluff Slab Project – Close-up view of drum label corresponding to Photograph 3