

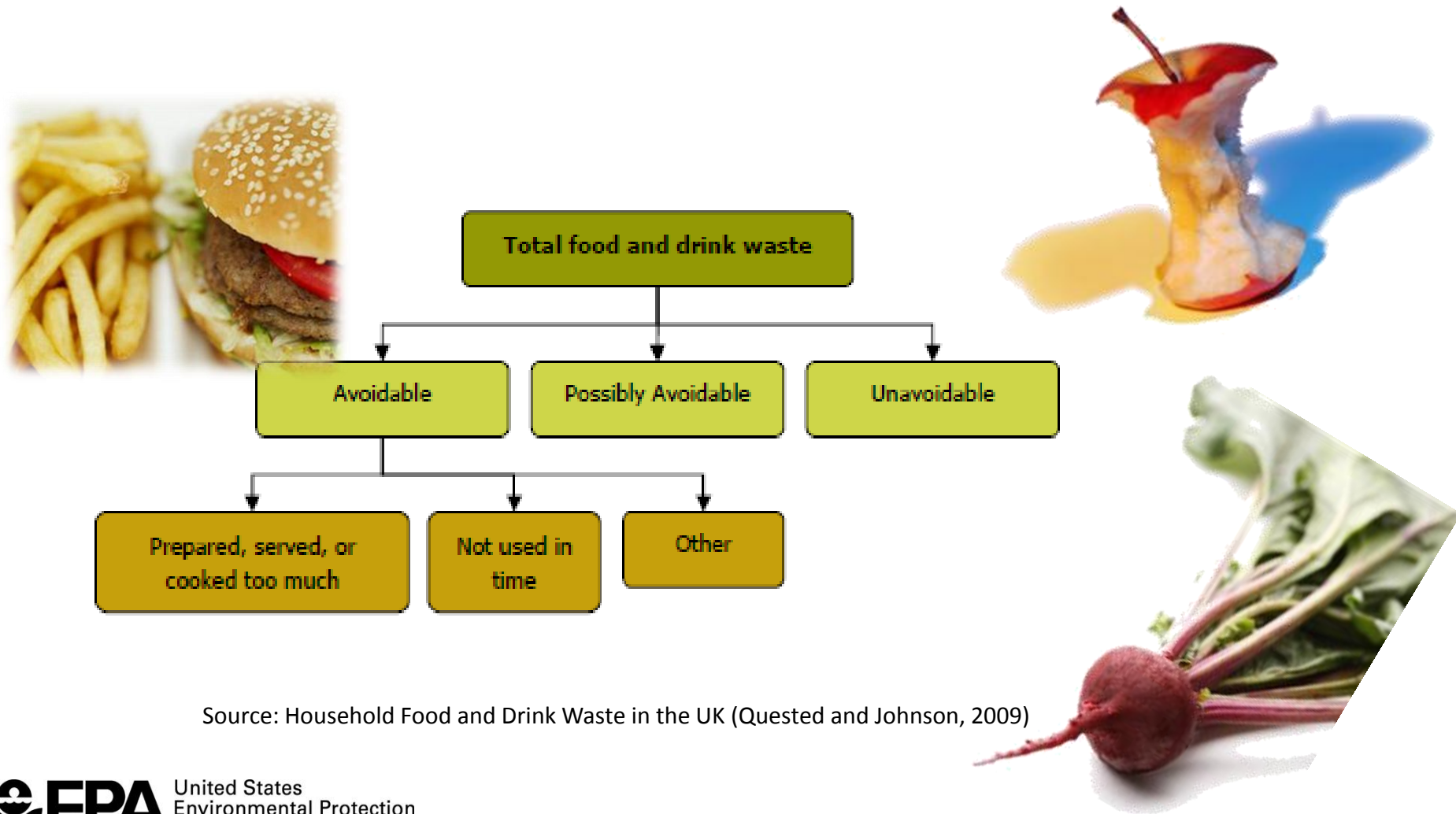


# **SUSTAINABLE FOOD WASTE MANAGEMENT THROUGH THE *FOOD RECOVERY CHALLENGE***

**NOVEMBER 10, 2011  
GREENCHILL WEBINAR SERIES**

**LAURA MORENO, U.S. EPA**

# So, what exactly is food waste?



Source: Household Food and Drink Waste in the UK (Quested and Johnson, 2009)

# The Food Waste Problem

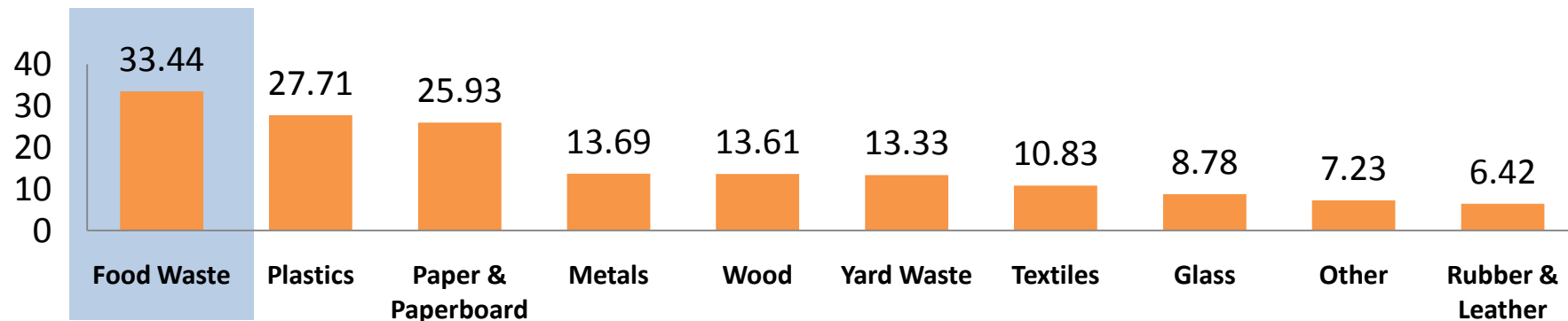
**Americans  
waste  
enough food  
to fill the  
Rose Bowl  
every day.**

(Bloom 2007)



# So how much food are we throwing away every year?

- In total, just under 34 million tons of food waste was disposed of in landfills/incinerators in 2009 (14% of the country's total waste stream)
- Less than 3% of food waste was recovered for recycling (composting) in 2009 (EPA, 2010)



# Food waste is a problem because it impacts the economy.

- Financially, wasted food costs America **more than \$100 billion** annually (Bloom, 2007)
  - Disposal cost of municipal waste management
  - Over purchasing costs
  - Cost of lost energy



# It impacts society.

- **50 million Americans**, or 14% of American households, were food insecure in 2009 (USDA).
- Food insecurity can increase the likelihood for an individual to have **major health concerns**.

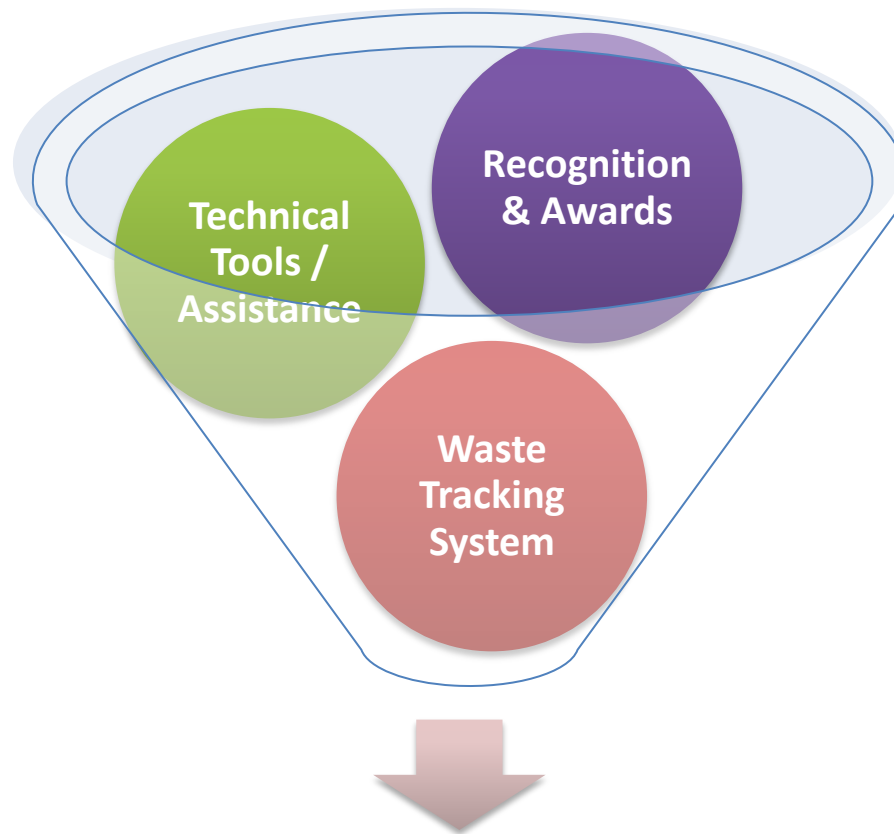


# It impacts the environment.

- Food that enters a landfill produces methane, a greenhouse gas with **21 times** the warming potential of CO<sub>2</sub>
- Food production impacts **water quality, soil productivity, and contributes to about 13% of the nation's greenhouse gas emissions.**



# One tool to reduce food waste is EPA's *Food Recovery Challenge (FRC)*



**Cost Savings and Brand Recognition  
Supporting Your Community  
Reducing Environmental Impact**



# The FRC is a great tool to help you reduce your food waste.

- ✓ The FRC is a FREE, simple tool.
- ✓ You'll receive free technical assistance from regional EPA staff.
- ✓ Standardized metrics allow for easy data tracking & comparison (internally & externally).
- ✓ Opportunity to learn about best management practices.
- ✓ Be recognized for your innovative work on food waste reduction & recovery.

# What We Can Do For You...

- EPA tools and technical assistance
  - [WasteWise Tool](#) *Re-TRAC* for tracking waste
    - Personalized annual progress report with Climate Profile
  - Other EPA Tools
    - [Food Waste Management Calculator](#)
    - Food Waste Source Reduction Auditing Tool
  - Regular webinars on food waste related issues
  - Clearinghouse for case studies, tools, templates, BMPs, and outreach materials

# What We Can Do For You...

- Recognition
  - Website
  - Awards
  - Case Studies

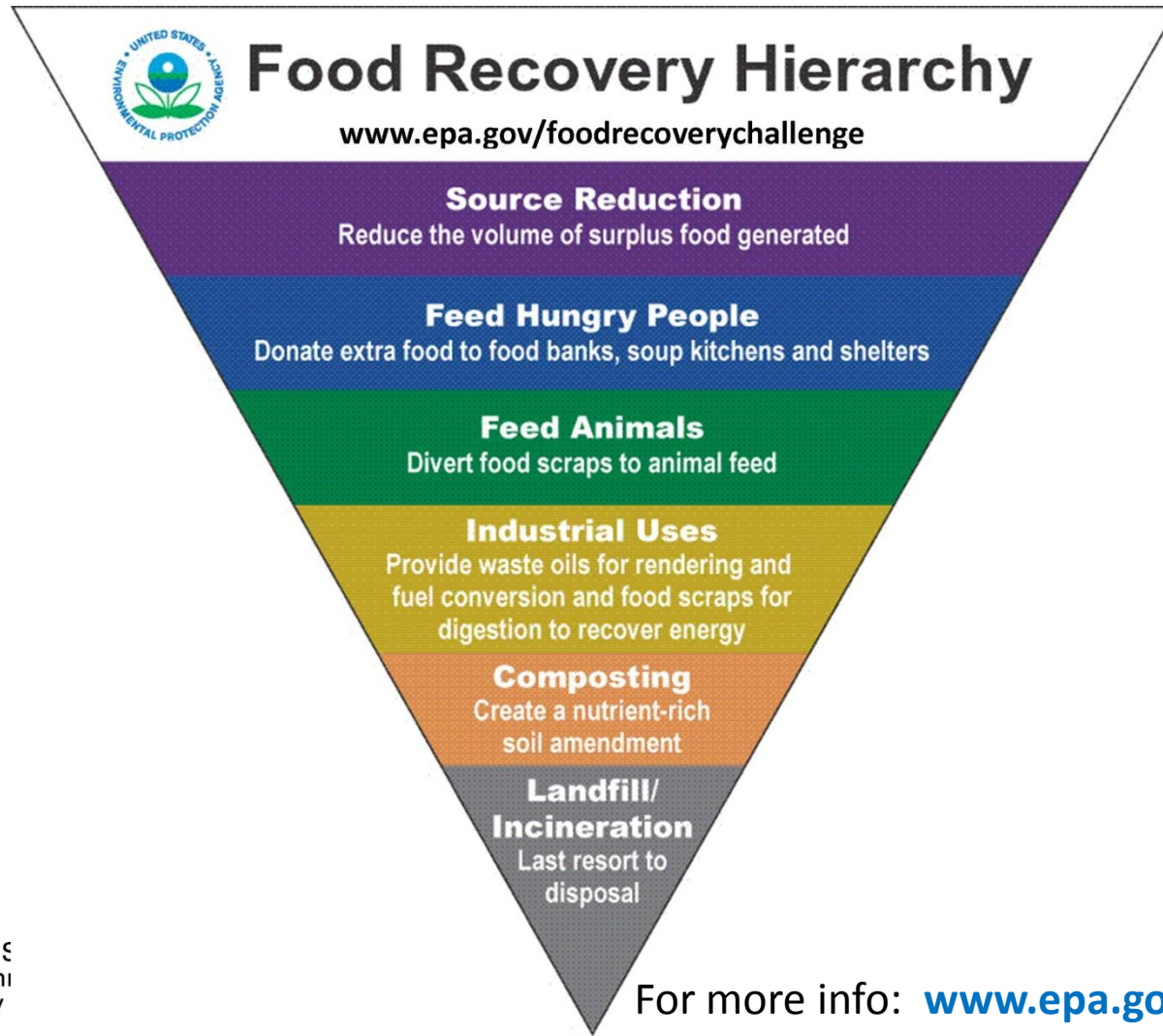


# What's In It For You?

- ✓ Reduce your costs
- ✓ Improve your image
- ✓ Feed your communities
- ✓ Protect your environment.



# So how can you reduce your food waste and save money?



# Source Reduction

- Reducing waste at the “source” or waste prevention
  - Reduce “over-buying”
  - Improved inventory mgmt
  - Improved storage & handling
  - Decrease prep waste
  - Decrease plate waste
- Greatest potential for **saving money!!!**



# Food Donation

## Doing Well by Doing Good

- In 2009, over 14% of households in the U.S. were food insecure
- Much of the food currently wasted is **edible, wholesome and safe for donation**
- Tax Benefits & Liability Protection for your donations

Tool: [Hungerpedia](#) helps match agencies in need with donors of food.

# Source Reduction Success Story



- Donated **256 million pounds** of food to hunger relief (2010) = **197 million meals**
- After tracking food waste re-evaluated purchasing practices reduced **food waste generation by 30%.**





# Feeding Animals

- Local farmers or zoos may use surplus food and scraps as animal feed



# Feeding Animals Success Story



- Key Focus is Source reduction
- Food fit for human consumption to food banks
- Inedible leftovers go to local farms for piggery programs if available
- Final option is composting



# Composting – Feed the Soil

- On-site or off-site composting
- Tip fees to composters generally less than landfills
- Creates valuable soil amendment



# Composting Success Story

## Massachusetts Supermarket Organics Recycling Network

Innovative partnership between MassDEP, the Massachusetts Food Association, USEPA New England and individual supermarkets, haulers and processors **to advance organics and other recycling in the supermarket industry.**

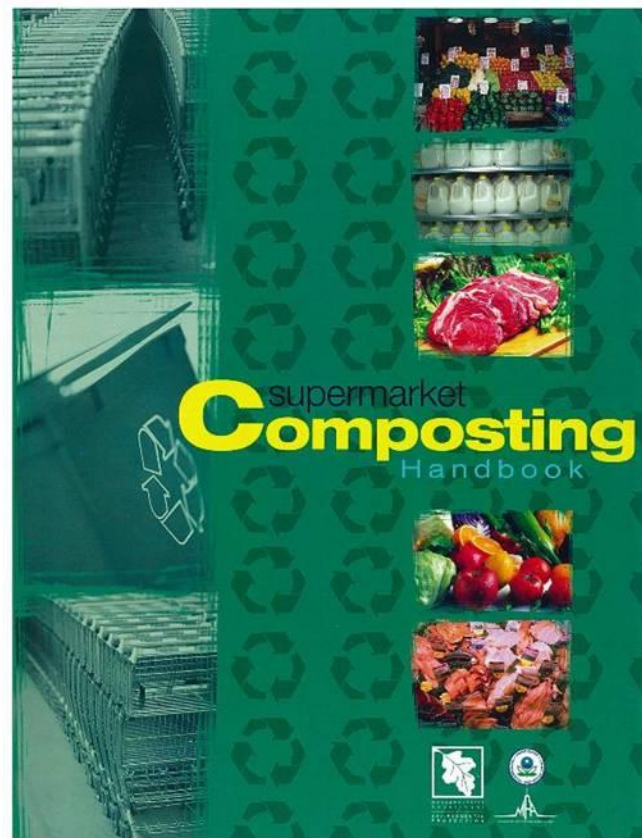




# Supermarket Composting Handbook

- ★ Letters to Mgmt.
- ★ Case Studies
- ★ Cost Benefit Worksheets
- ★ Sign templates for acceptable materials for each dept (multi-lingual)
- ★ CD for customized use

<http://www.mass.gov/dep/recycle/reduce/smhandbk.pdf>



# Results to Date

- ★ **227** + Supermarkets diverting food waste in the following chains:
  - ★ Big Y Foods
  - ★ Hannaford Supermarkets
  - ★ Roche Bros.
  - ★ Shaw's Supermarkets
  - ★ Stop & Shop
  - ★ Wal Mart
  - ★ Whole Foods



# Anaerobic Digestion

- Process where food is broken down in the absence of oxygen to produce:
  - Renewable energy
  - Soil amendment



# Join Now!

And... take a bite out of food waste!

<http://www.epa.gov/foodrecoverychallenge>

## Four Easy Steps!

1. **Assess It!** Conduct baseline food waste assessment
2. **Commit to It!** Set a three year goal with a commitment to increase food reduction/diversion by 5% in the first year.
3. **Do It!** Undertake food waste reduction and recovery activities to meet your goals!
4. **Track It!** Report annually using WasteWise tool



# Contact Information



Laura Moreno

[Moreno.laura@epa.gov](mailto:Moreno.laura@epa.gov)

(415)947-4240

Ashley Zanolli

[Zanolli.ashley@epa.gov](mailto:Zanolli.ashley@epa.gov)

(206) 553-4425

<http://www.epa.gov/foodrecoverychallenge>

# Current Participants

## *Thank You!*

### *Grocery- Food Recovery Challenge Partners*

- Big Y Foods, Inc.
- Hannaford
- SuperValu
- Wakefern Food Corp
- Weis Markets



# Details for Joining the FRC

1. **Join** Waste Wise and the Food Recovery Challenge at <http://www.epa.gov/osw/partnerships/wastewise/join.htm>
  - Make sure to choose Food Recovery Challenge when you join
2. **Conduct baseline food waste assessment** within 60 days of joining
  - Done using the WasteWise Tool (<http://www.epa.gov/osw/partnerships/wastewise/retrac.htm>)
3. **Set a three year goal** for reducing the amount of food waste reaching landfills.
  - Year One: Commit to at least a 5% increase in at least one of the three food diversion categories ([prevention](#), [donation](#), and [composting](#)), or alternatively a combined 5% increase across all three categories. If you have no data from a previous year for a category, partners may select a site-specific goal.
  - Years Two and Three: Set site-specific numerical targets based on opportunities at your facility
4. **Report annually**
  - Done using the WasteWise Tool
5. **Get Recognized!**
  - Annual awards for outstanding participants