



Department of Navy  
Energy Program

# WELCOME

## Ocean Energy Technologies And Initiatives

**Jack S. Brown**  
**NAVFAC Marianas**  
**Utilities and Energy**  
**Management Product Line**  
**Coordinator**

**tel: (671) 339-3104**

**fax: (671) 333-2270**





Department of Navy  
Energy Program

# Power Generation 101

- Three things required to Generate Electricity
  - Electric conductor
  - Magnetic field
  - Motion between the two
- A Prime Mover Produces the Motion; Typical Convention Power Plants
  - Steam Turbines
  - Combustion Turbines
  - Diesel Engines
- Ocean Energy Technologies Use Forces of Nature as the Prime Mover





Department of Navy  
Energy Program

# Ocean Energy Resources

Ocean energy technologies can be classified by the ocean energy resource through which power is derived, namely - wave, thermal, tidal, or ocean current. Navy Region Marianas is investigating some of these technologies and their derivatives:

- Ocean Thermal energy conversion (OTEC)
- Wave generation
- Tidal generation
- Ocean current
- Salt water air conditioning (SWAC)





Department of Navy  
Energy Program

# Ocean Thermal Energy Conversion

## Basic Concept

- Rankine Cycle
  - Utilize the temperature difference between warm surface water and deep-ocean cold water.

## Challenges

- Large Size of Equipment
  - Cooling Water Pipes
  - Heat Exchangers
- Cost
- Environmental

## By Products

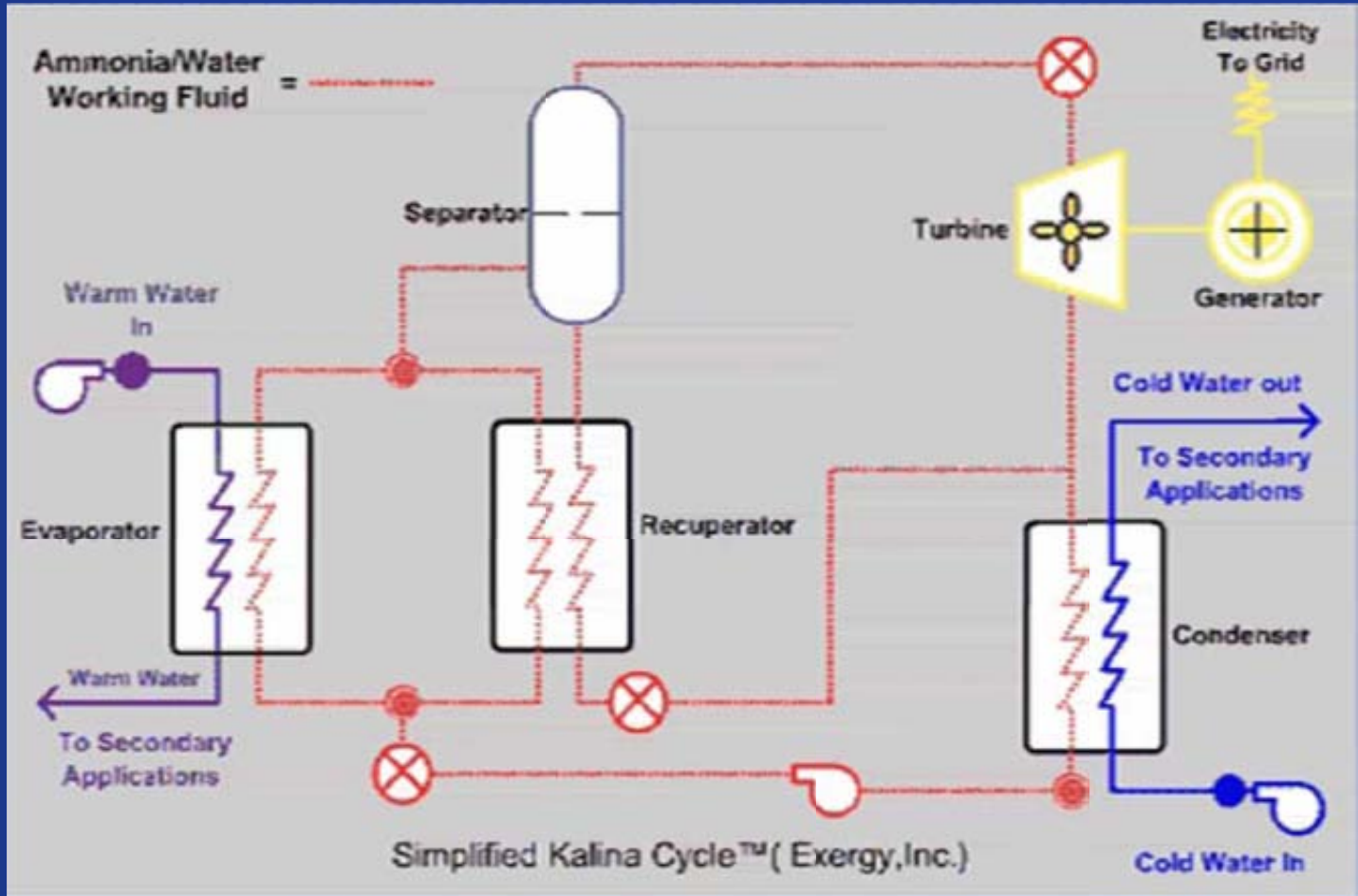
- Potable Water
- Minerals





Department of Navy  
Energy Program

# Ocean Thermal Energy Conversion







Department of Navy  
Energy Program

# Wave Generation

## Basic Concept

- **Ocean wave interaction with a mechanical device produces motion**
  - Wave Interaction is used to categorize wave energy technologies
    - Terminator
    - Attenuator
    - Point absorber
- **Wave energy devices are commonly referred to as Wave Energy Converters (WECs)**
- **Challenges**
  - Large Size Of Equipment
  - Cost
  - Environmental

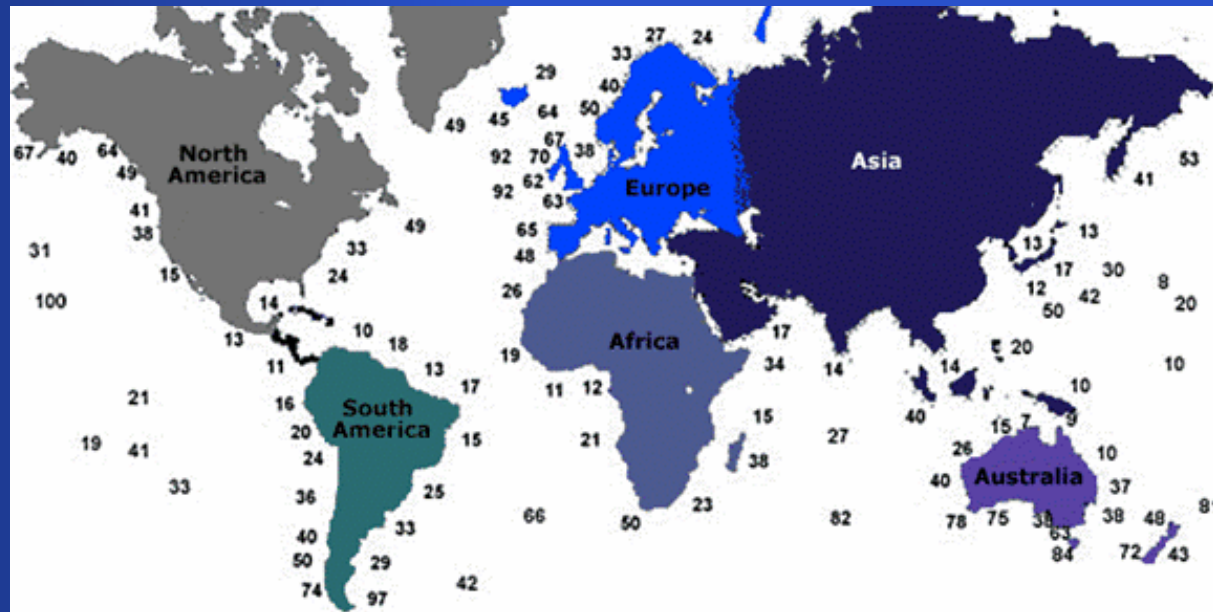




Department of Navy  
Energy Program

# Wave Generation

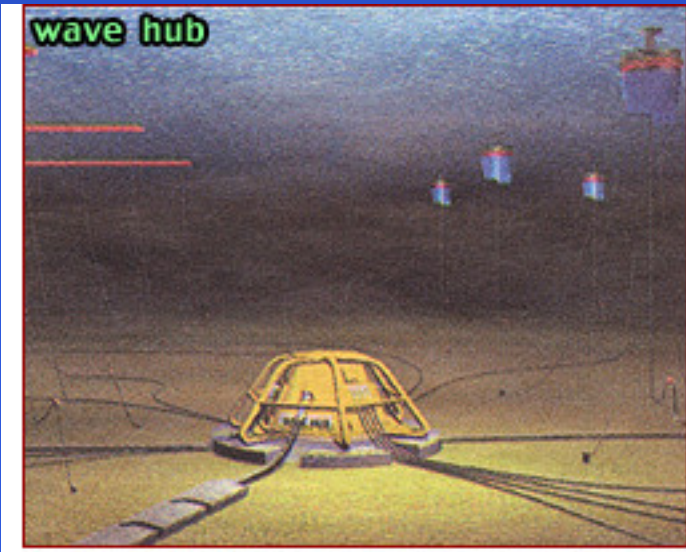
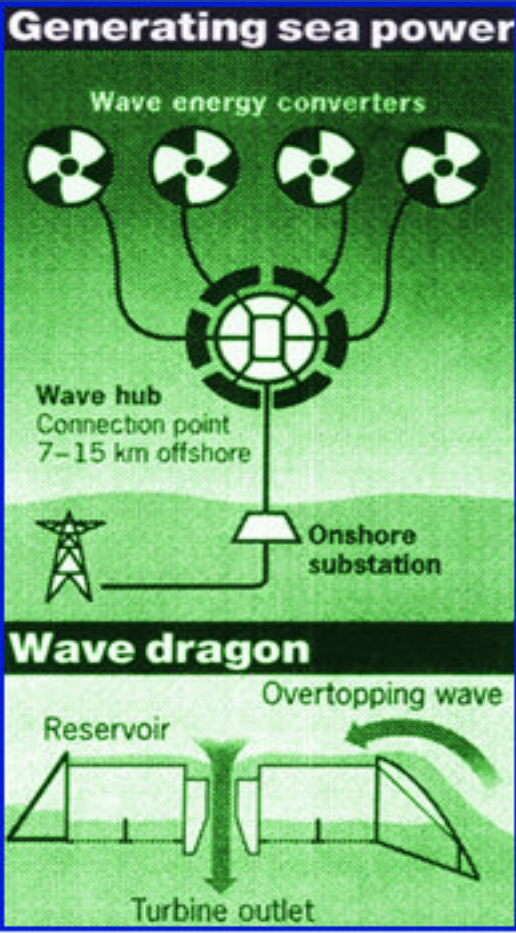
Wave energy maps indicate the average energy generated by waves expressed in units of kilowatt per meter of wave front. In general, the average wave energy incident on the shoreline varies from 10 kW/m at the equator to 80 kW/m above and below equatorial latitudes





Department of Navy  
Energy Program

# Wave Generation Examples







Department of Navy  
Energy Program

# Tidal Generation

## Basic Concept

- **Tides create a current**

- The power available from the energy of tidal currents tapped to generate power

- Large Bays and Estuaries along the coast

- Pacific Atolls?





Department of Navy  
Energy Program

# Ocean Current

## Basic Concept

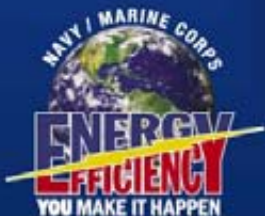
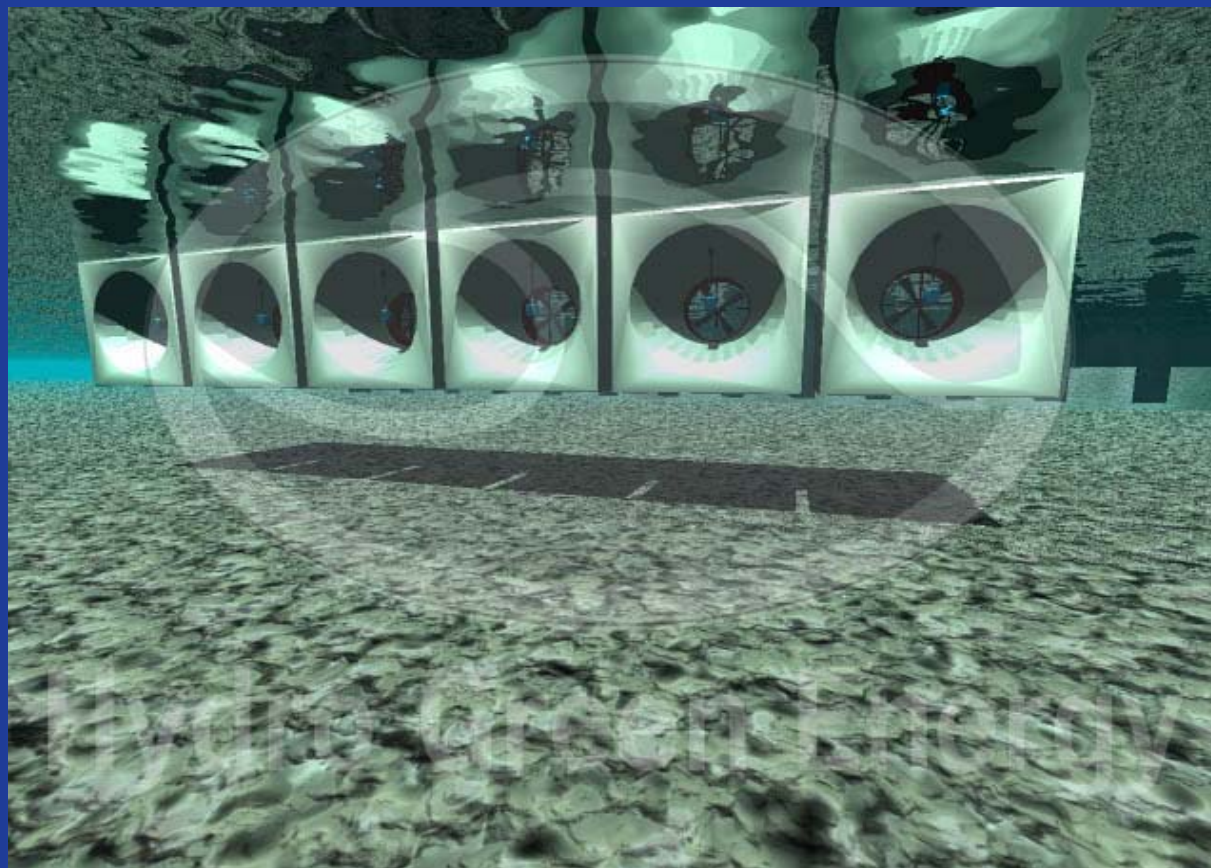
- The power available from the energy of Ocean currents tapped to generate power
- Challenges
  - Large Size of Equipment
  - Cost
  - Environmental





Department of Navy  
Energy Program

# Ocean Current





Department of Navy  
Energy Program

# Sea Water Air Conditioning

## Basic Concept

- Utilize cold seawater as a coolant for air-conditioning systems
- In Use in several locations
  - Intercontinental Hotel Bora Bora
  - Cornell University
  - Downtown Honolulu under design

## Challenges

- Large Size of Equipment
- Cost
- Environmental

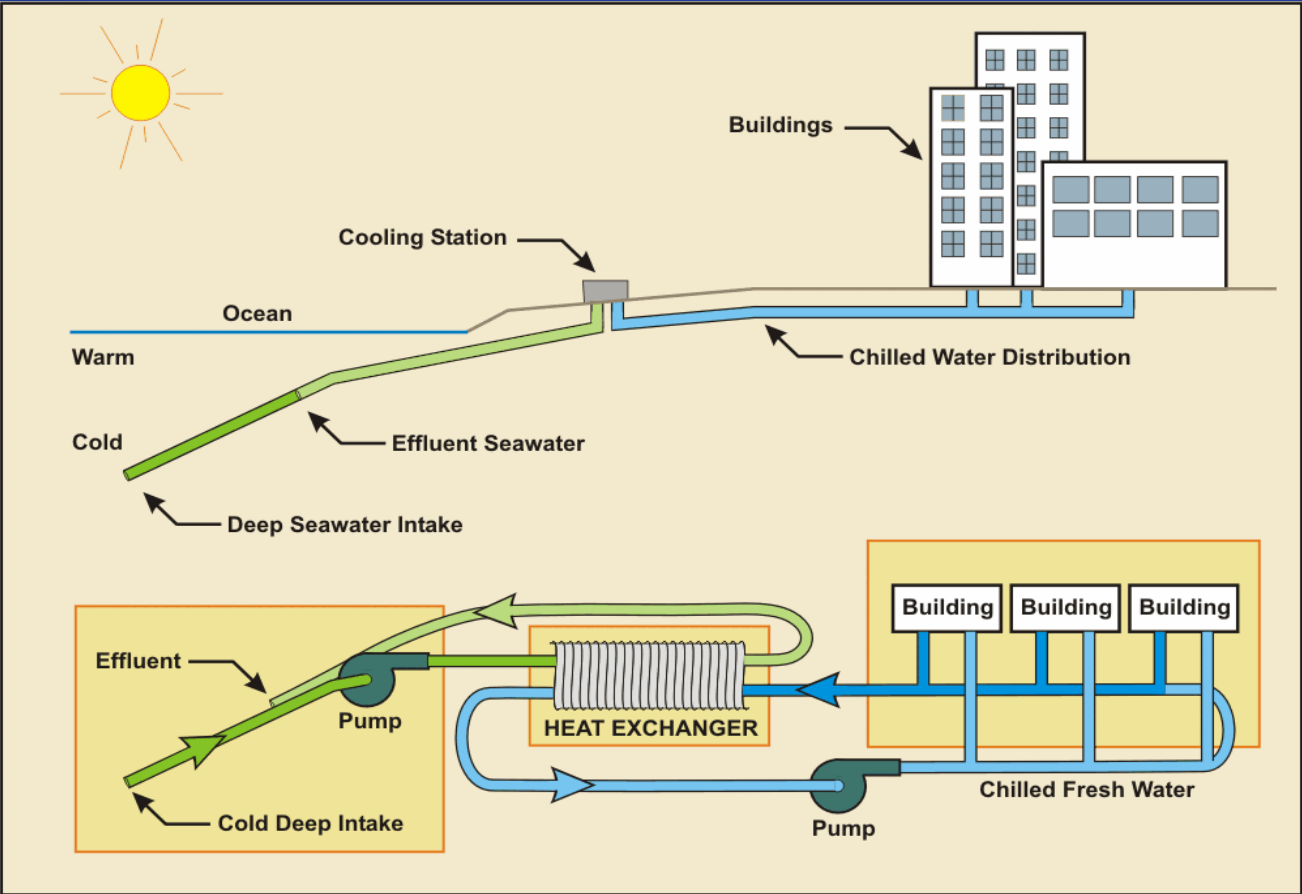






Department of Navy  
Energy Program

# Sea Water Air Conditioning





Department of Navy  
Energy Program

# CURRENT NAVY INTEREST

Ocean Thermal Energy Conversion  
(OTEC)

- Feasibility Study Kickoff Meeting Held  
27 Feb

Sea Water Air Conditioning (SWAC)

- Site Investigation Underway

