



Ramona Band of Cahuilla Indians

October 22, 2008

Presented by:

**Manuel Hamilton
Vice-Chairman**



Ramona Tribe – Overview

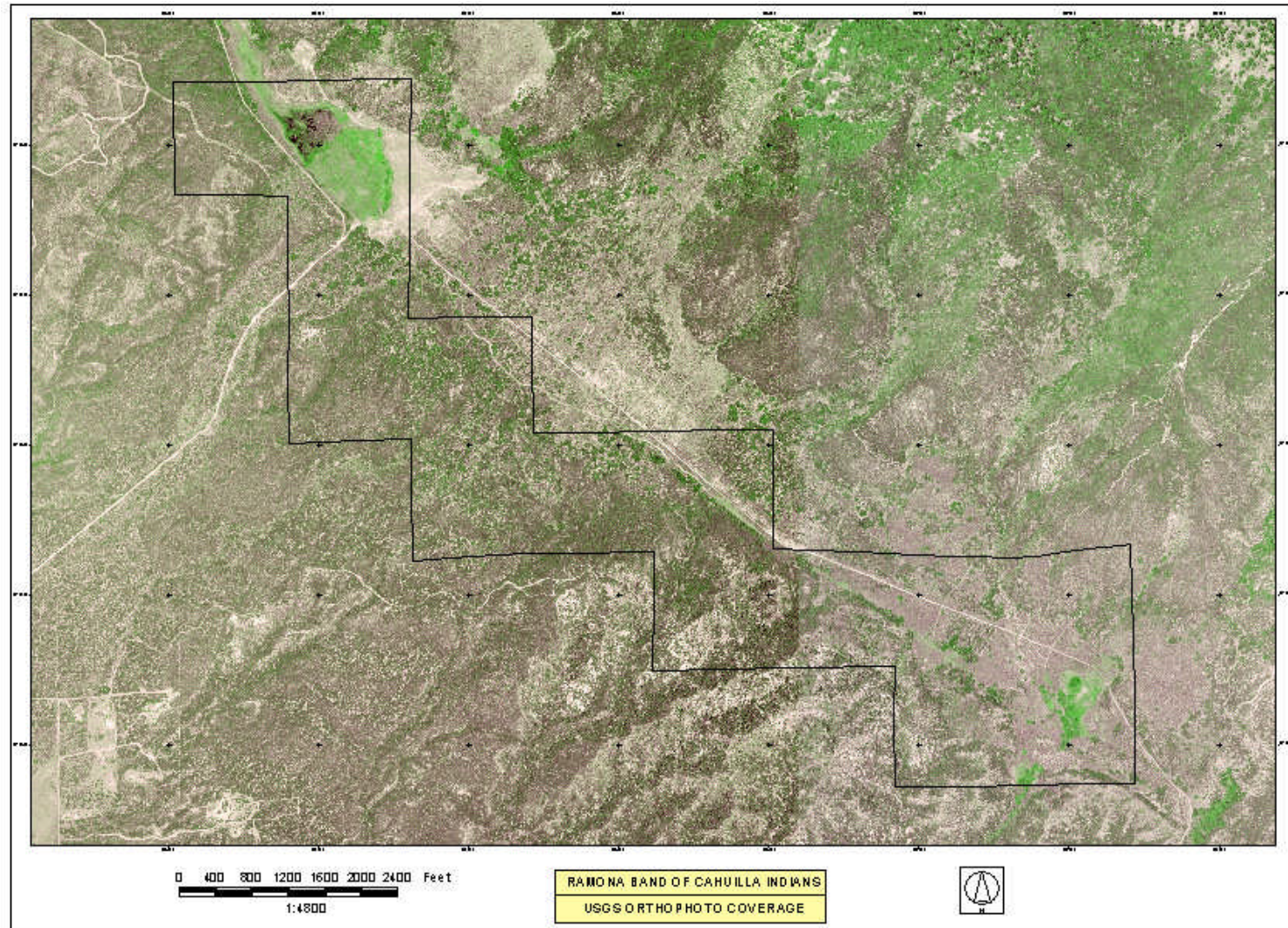
- **FIRST RESERVATION TO BE COMPLETELY OFF GRID**
- **ISSUES THE TRIBE FACES:**
 - REMOTE AND RURAL**
 - LAND LOCKED**
 - UTILITY COSTS ARE PROHIBITIVE**
- **ECO-TOURISM PROJECT**
- **HOUSING UNITS**



RAMONA RESERVATION

Anza, CA

45 min. east of Temecula/45 Min. south of Palm Springs





Ramona Indian Reservation Power Systems

- **Macro Grid Hybrid Power System: Eco-Tourism**
- **Micro Grid Hybrid Power System: Housing Units**



RAMONA ECO-TOURISM PROJECT OBJECTIVE

- **TO PROVIDE POWER TO THE TRIBE'S ECOTOURISM BUSINESS VIA ALTERNATIVE ENERGY TECHNOLOGIES**



PROJECT PARTICIPANTS

- **AGENCIES**

TRIBE – SUPPLEMENTAL FUNDING

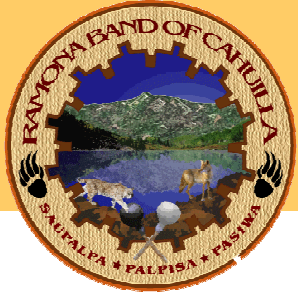
DOE – ECOTOURISM POWER

HUD CDBG – ECOLODGE

USDA RD - ECOTENTS

BOR – ECOTOURISM WATER

U.S. FOREST SERVICE – ROAD ACCESS



Macro-Grid Hybrid Power System

- **10kw Photovoltaic Array**
- **VRLA (Value Regulated Lead Acid) Battery Banks**
- **15kVA continuous inverter with 175A disconnect**
- **60kw 3 Phase Diesel Generator**
- **Power Station Building 12' x 16'**
- **Monitoring System, Inverter, Breaker Box, Wiring, etc.**



EVERGREEN SOLAR CEDAR LINE PHOTOVOLTAIC MODULES EC-100 SERIES





SOLAR PANELS – SIDE VIEW

- 60 Module Solar Array:
175w operating at 100
volts DC
- Total of 10,500w
- Feed two inverter banks
 - Main Lodge System
 - Ecotents





POWER BUILDING FRONT VIEW





POWER BUILDING SIDE VIEW





ABSOLYTE IIP BATTERIES

- Battery Output: 10,800 Ah at 48 volts
- Life Capacity: up to 20 years
- Weight: 300 lbs per unit





OUTBACK INVERTERS/CHARGERS

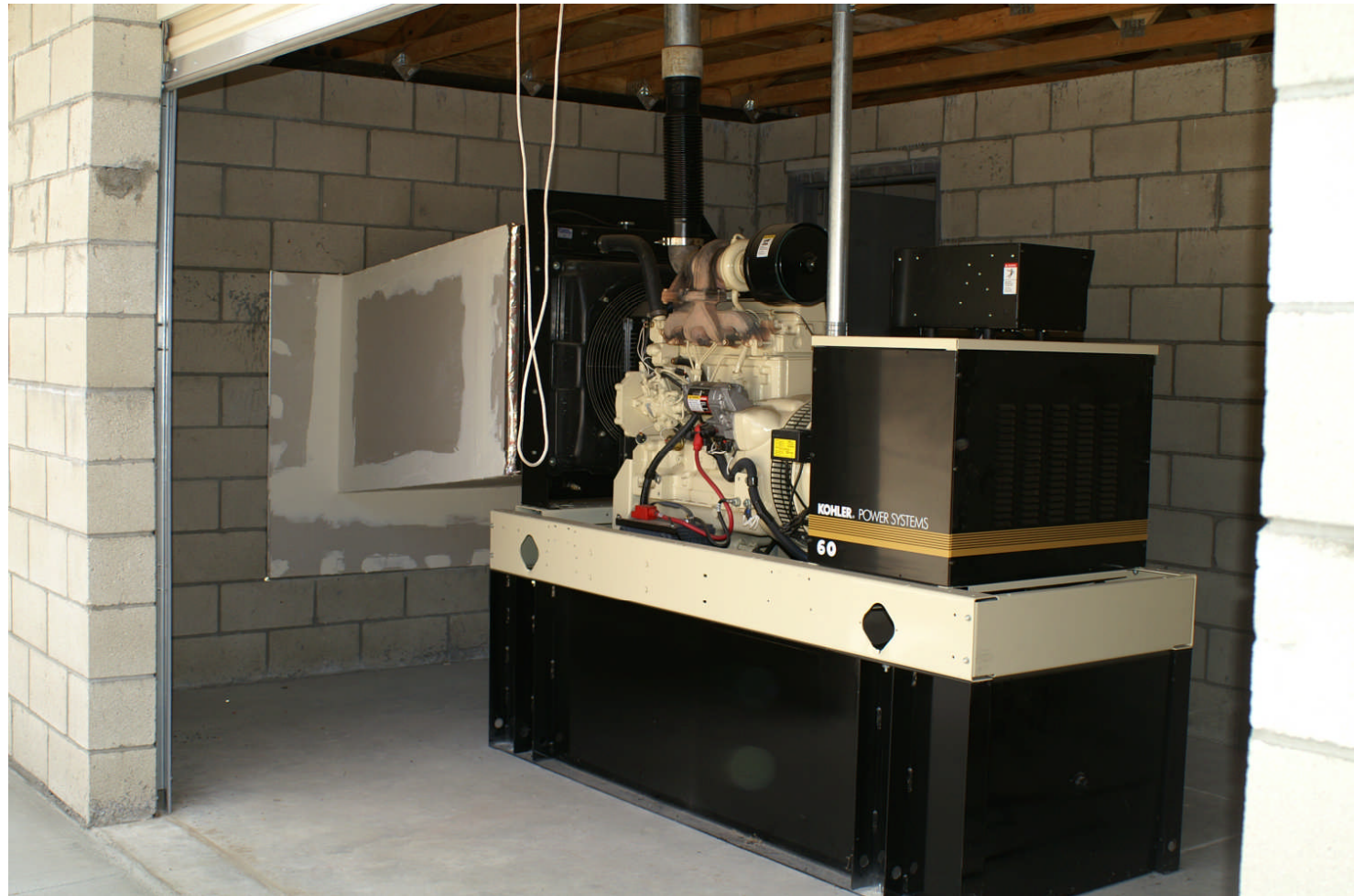
- 36 Kw Inverters
- 120/240 Volts





KOHLER 60HZ GENERATOR

- 60Kw 3 Phase Diesel Generator





RAMONA ECOTENTS

Funded by USDA Rural Development





COMPLETED ECOTENTS





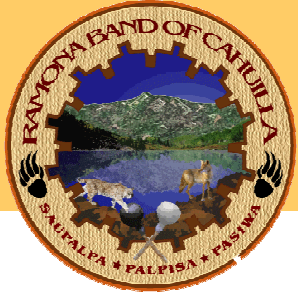
ECOTENT SKYLIGHT OPENING





COMPLETED SKYLIGHT OPENING





VIEW INSIDE OF ECOTENTS





VIEW INSIDE OF ECOTENTS





TECHNICAL/MANAGEMENT ISSUES

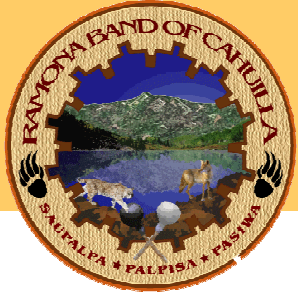
- **COORDINATION OF MULTI-AGENCIES WHICH SLOWS PROJECT PROGRESS**
- **ENVIRONMENTAL RESTRICTIONS**

Need to coordinate with environmental departments to ensure all requirements are met prior to start of project.



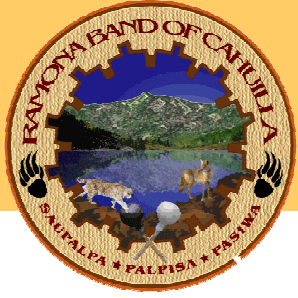
ACTIVITIES REMAINING

- **EXTEND LINES TO THE WATER SYSTEM**
- **CONSTRUCT ECOLODGE (RESTAURANT, EDUCATION CENTER, CONFERENCE CENTER, OFFICES, RESERVATION OFFICE, GIFT SHOP, ETC.)**
- **EXTEND LINES TO THE ECOLODGE WHEN COMPLETE**



Housing Complex: Micro-Grid Hybrid System

- **2Kw wind turbine capacity with wireless controls**
- **6.3Kw large photovoltaic modular array**
- **VRLA (Value Regulated Lead Acid) battery banks**
- **25Kw propane generator**
- **One propane storage tanks**
- **Currently installing power gauge**



Southwest Wind Power Skystream 3.7 Wireless Model





Wind Turbine and Solar Cells for Housing Complex producing 8.3 Kw





Power House (includes back-up propane generator, battery bank, and inverters/chargers)





FUTURE PLANS

- **BUILD OUT OF THE ECOTOURISM DESTINATION RESORT INCLUDING ACQUIRING ADDITIONAL FINANCING**
- **DEVELOP ECOTOURISM PROGRAMS**
 - ALTERNATIVE ENERGY EDUCATION
 - CULTURAL – LANGUAGE, BASKETRY, & POTTERY
 - HERBOLOGY
 - PARTNERSHIP WITH U.S. FOREST SERVICE AND BLM
- **CONTINUE TO BE SELF SUFFICIENT**