

Building Successful Stakeholder Groups



Implementing Protection Plans

Colleen Williams
Source Water Specialist
Colorado Rural Water Association

Agenda for Today:



- About CRWA's Source Water Protection Program
- Building a Successful Stakeholder Group
- Case Studies of Implement Protection Plans

CRWA SWP Program



Goal: To build self-directed community source water protection teams who want to contribute to the planning process and commit to implementing the Action Plan.

My job: To empower these teams to achieve this goal.

Building the Team



- Getting the right people to the table
- Facilitating a comfortable, well-run meeting
- Building trust through sharing
- Resolving issues through consensus
- Encouraging ownership of the Plan

Building Partners



Why do you need partners?

- To develop widespread support
- To help carry out the Plan
- To increase public understanding
- To provide necessary resources
- To avoid reinventing the wheel

Case Studies

Implementing Protection Plans:

- Northern Colorado Water Association
- Plateau Valley
- Beulah Area



Northern Colorado Water
Association

Fort Collins



Brush

Sterling



Jamestown

Boulder

Denver

Vail



Meeker

Glenwood
Springs

Aspen

COLORADO

Burlington



Collbran,
Mesa,
Powderhorn



Ramah

Colorado
Springs



Park Center



Avondale

Pueblo



Beulah

Walsenburg, LaVeta, Cuchara



Trinidad

Mancos



Durango

Cortez

Silverton

Springfield

Plateau Valley Source Water Protection Plan



●
Collbran

National Forest Land

Planning Team: 55 Participants 7 Meetings



- Landowners & Citizens
- Land Managers: USFS & BLM
- Government Representatives
- Water Utility Board & Operators
- Agencies: NRCS
- Conservation Groups
- Oil and Gas Industry

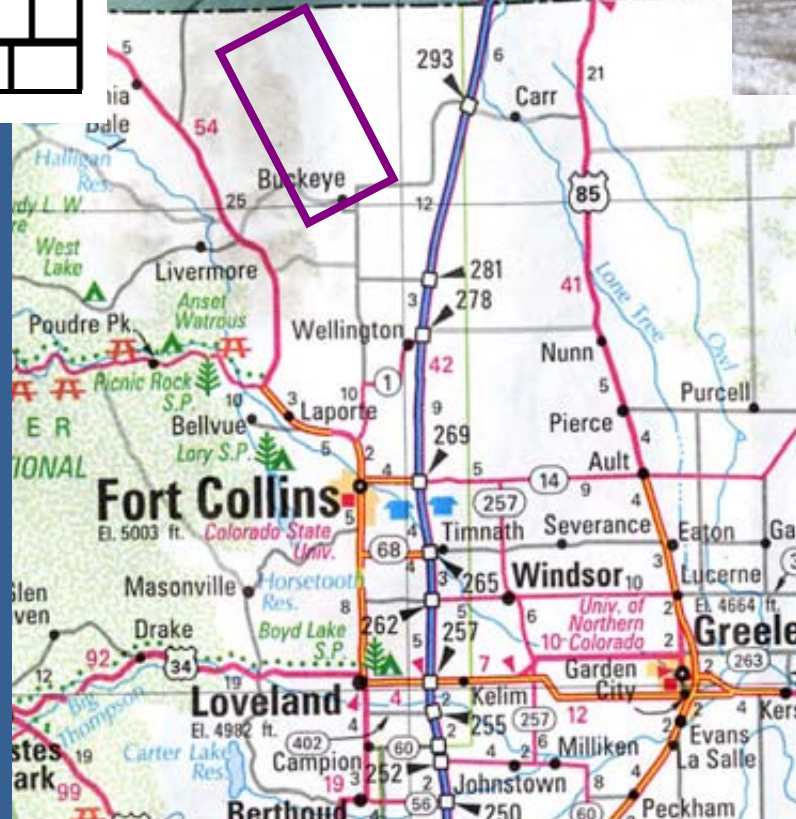
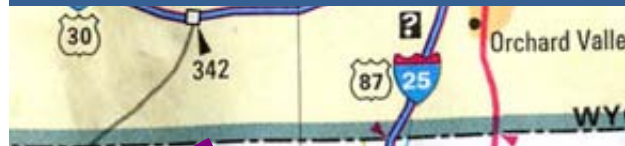
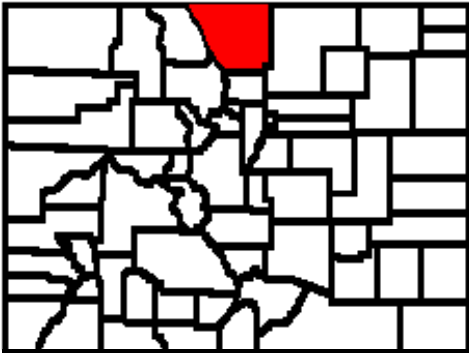
Management Approaches Implemented



- County and Public Land managers overlaid protection area on maps
- Town of Collbran is making SWP brochure for residents of valley
- Water managers are cleaning up the dump around the springs
- County Road Department is helping with signage on major roads identifying protection area and reporting spills

Northern Colorado Water Association

Larimer County



Planning Team Participants: 20



- County Commissioners, Land Use & Health Departments
- City of Fort Collins Wastewater Department
- Water Utility Manager, Operators & Board Member
- Local Ranchers & Property Owners
- State Health Department

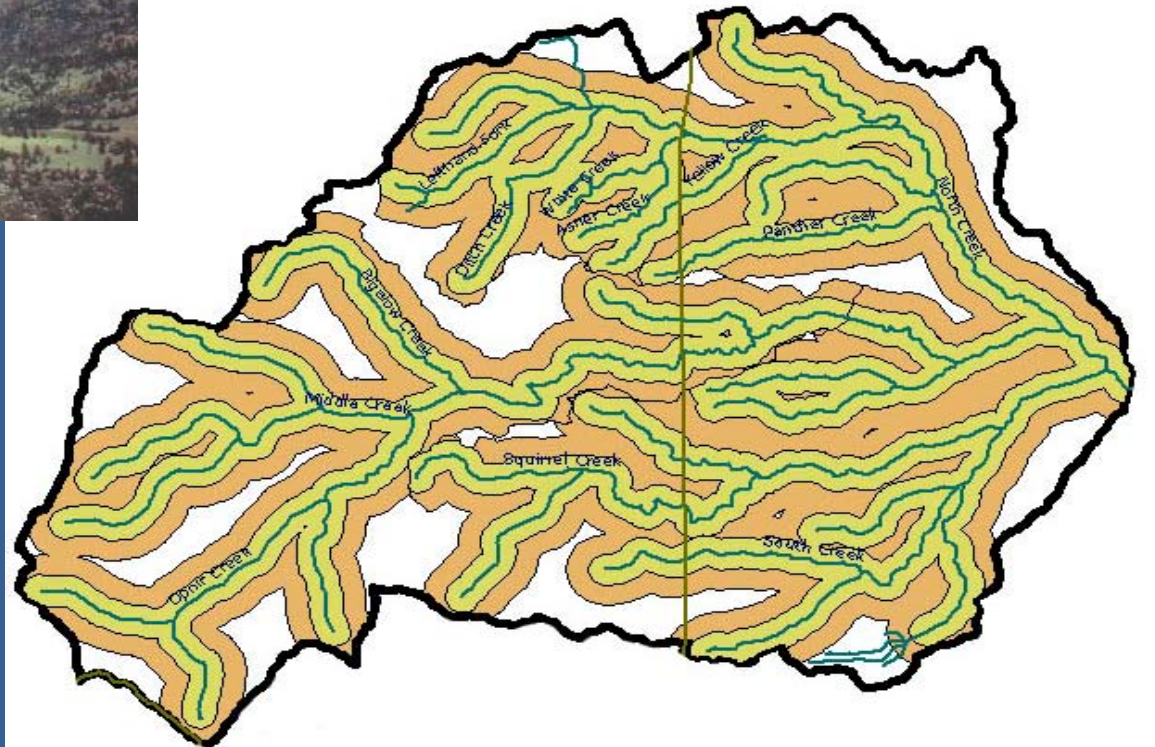
Management Approaches Implemented



- Public education on septic maintenance
- Water District purchased land and new wells
- County overlaid protection area on maps
- Inventoried old water wells & capped wells

Beulah Area Source Water Protection Plan

Pueblo County



Planning Team Participants: 22

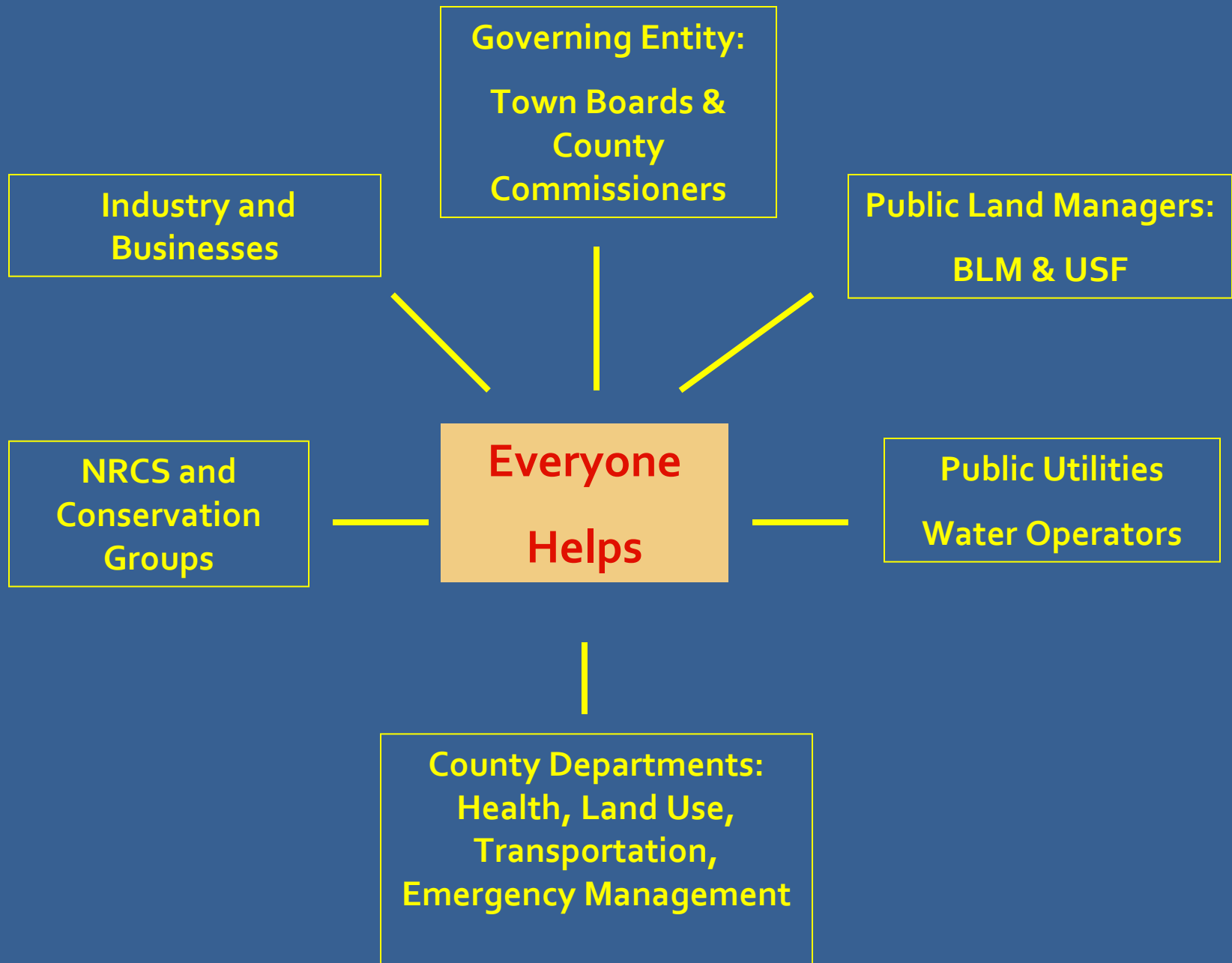


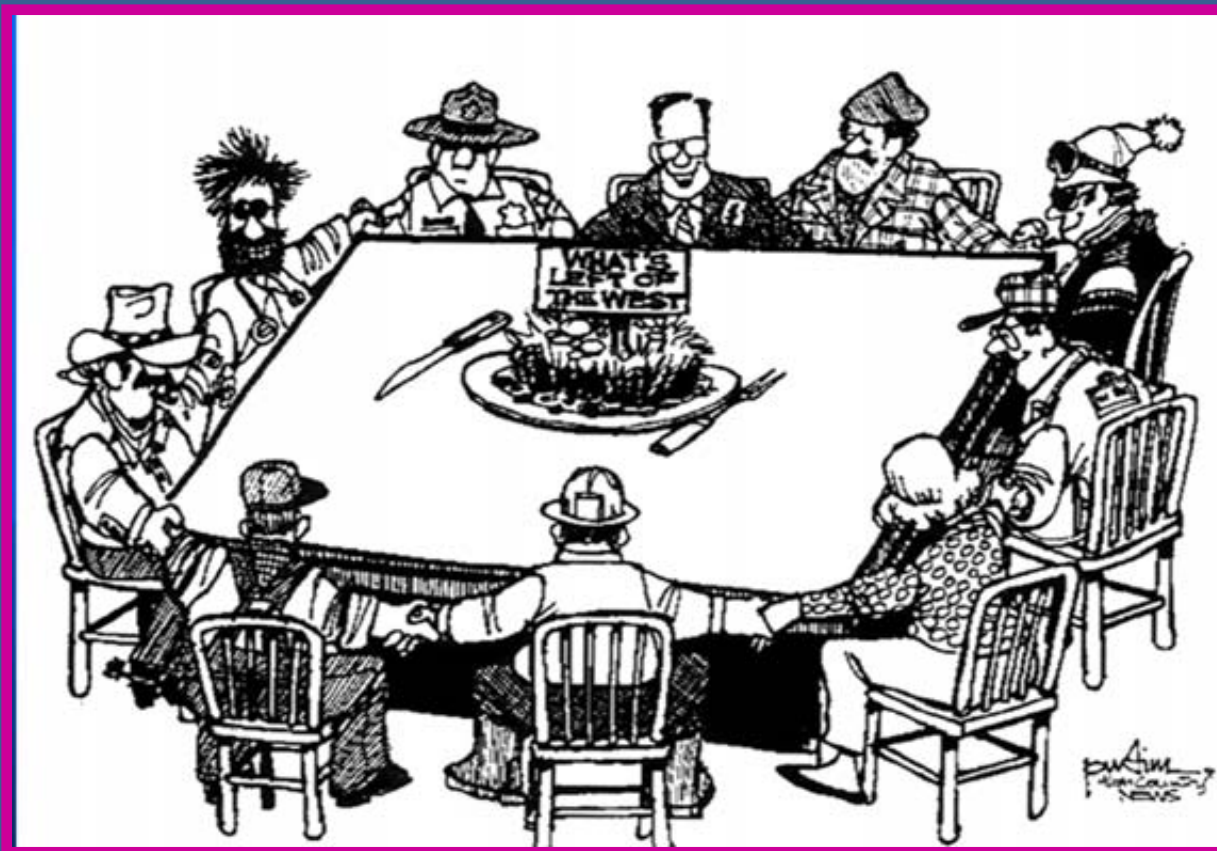
- Pine Drive and Beulah Water Works District
- Pueblo County: Planning, Health, GIS, Emergency Management
- Colorado State Forest Service
- Residents

Management Approaches Implemented



- Public education forum on septic maintenance
- County overlaid protection area on maps
- Water Districts develop monitoring plan, attended River Watch training, and began monitoring 4 sites





Building strong relationships with your partners is a fundamental necessary ingredient to making this protection plan work.