

APPENDIX II

TOPOGRAPHIC MAP

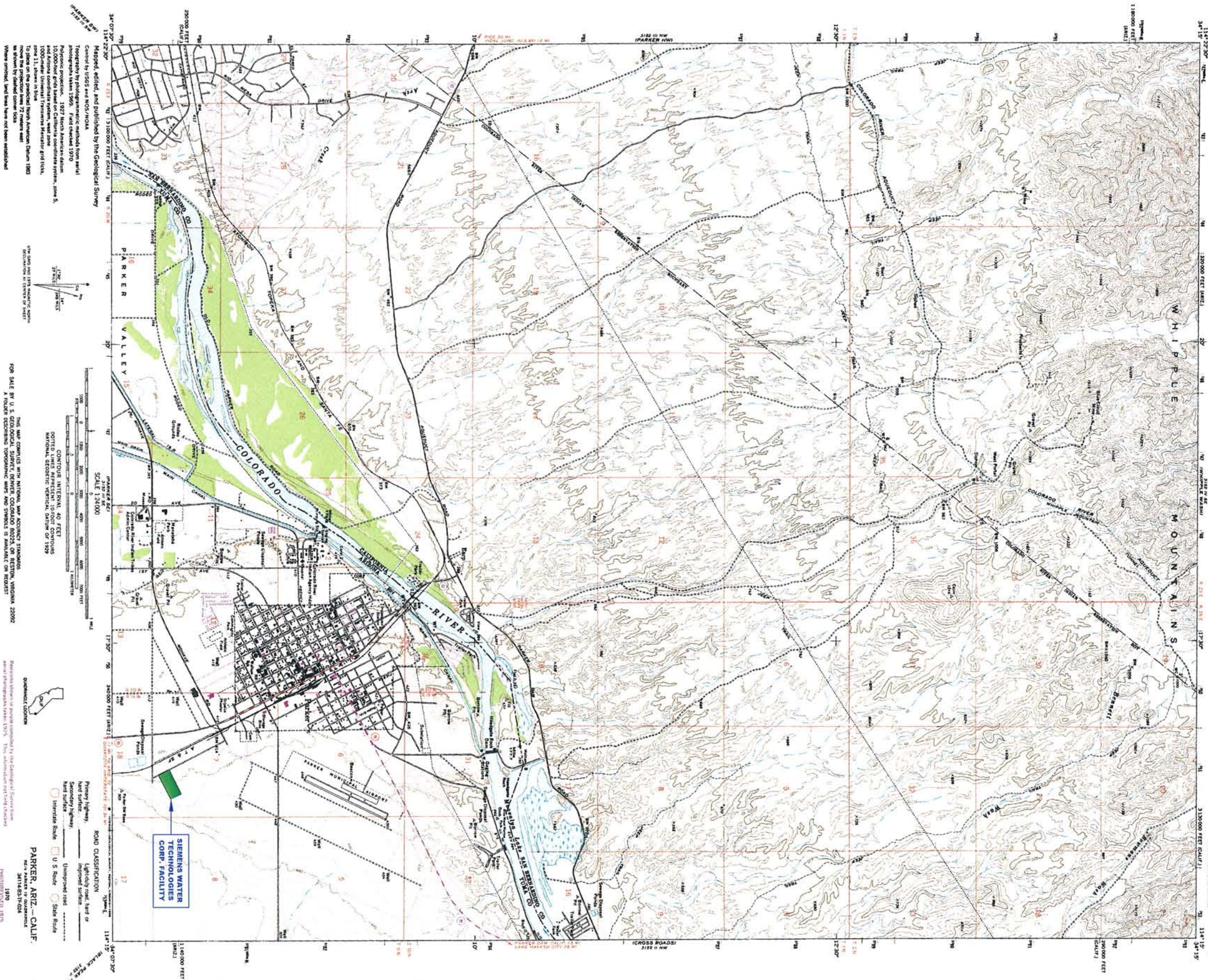
FLOOD INSURANCE MAP FOR THE COLORADO RIVER INDIAN RESERVATION

PERIPHERAL LAND USE STUDY DIAGRAM FOR THE COLORADO RIVER INDIAN TRIBE LANDS

WIND ROSE

LEGAL BOUNDARIES

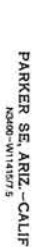
Revision 0
February 2007



- NOTES:
1. SEE ATTACHED SIEMENS WATER TECHNOLOGIES CORP. DRAWING D-14789-02 FOR DETAILED LOCATION OF S01, S02, AND X03.
 2. THERE ARE NO INJECTION WELLS ASSOCIATED WITH THIS FACILITY.
 3. THERE ARE NO SPRINGS, DRINKING WATER WELLS, NOR SURFACE WATER BODIES LOCATED WITHIN 1/4 MILE OF THIS FACILITY.

REV.	DATE	REVISION DESCRIPTION	DRAWN	CHK'D	ENGR

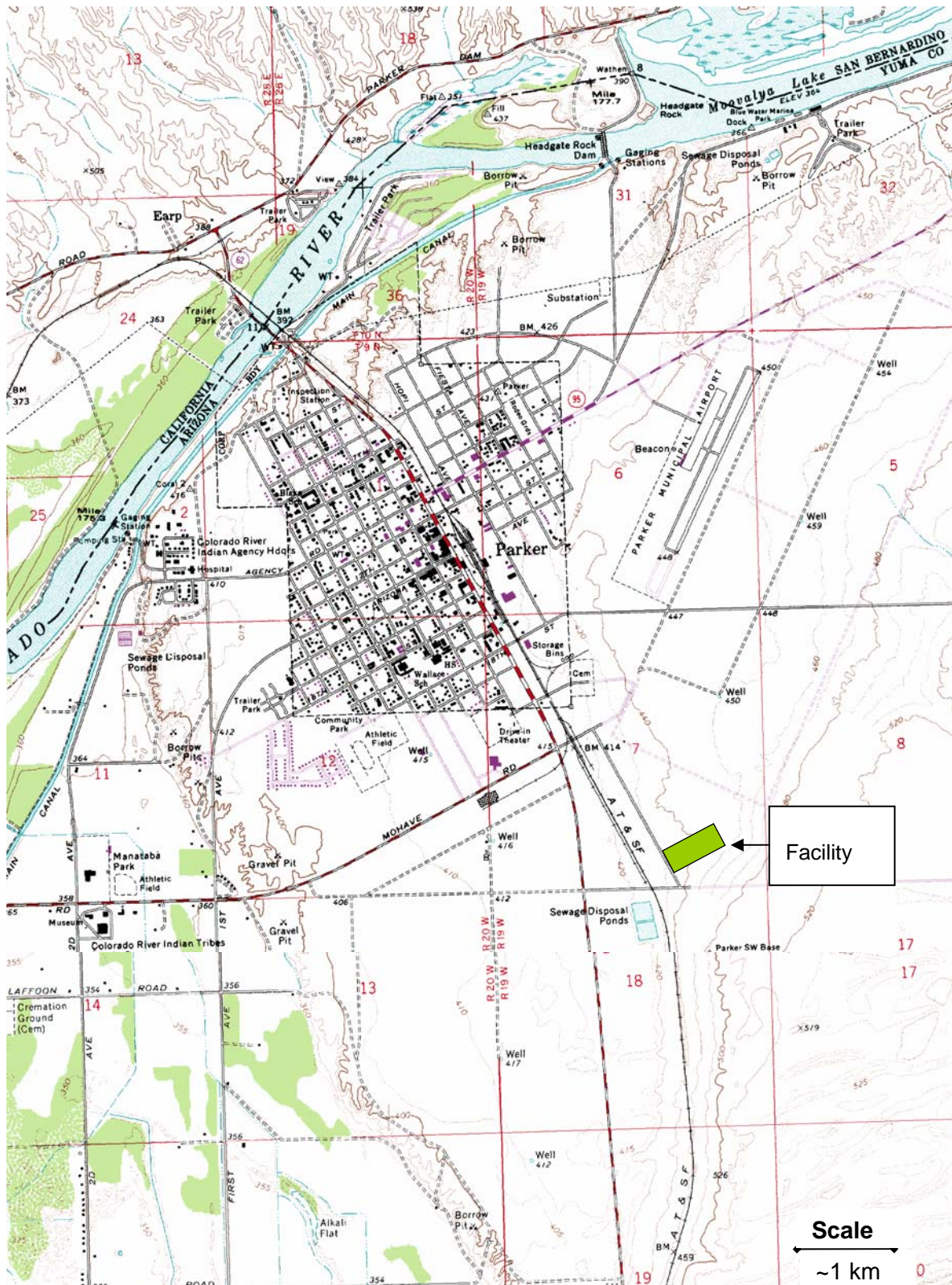
CUSTOMER:	SIEMENS WATER TECHNOLOGIES CORP.	TITLE:	SIEMENS WATER TECHNOLOGIES CORP.
LOCATION:	2523 MUTAHAR ST. PARKER, AZ 85344	PROJECT No.	PARKER, AZ 85344
DRAWN:	JEE	DATE:	1/22/07
CHK'D:	KEM	DATE:	1/22/07
ENGR:		DWG No.	C-100604
		SHEET No.	1 of 2
		REV	0



TOPOGRAPHIC MAP

C-100604	SHEET No.	2 of 2	REV. 0
----------	-----------	--------	--------

Facility Location



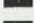
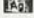
Peripheral Land Use Study: Colorado River Indian Tribes Lands

Peripheral Land Use Study

Colorado River Indian Tribes' Lands

Town of Parker, Arizona

Preliminary Land Use Concept Plan

-  Single Family Detached
-  Single Family Attached
-  Multi-Family
-  Mobile Home Park
-  Commercial
-  Office
-  Industrial
-  Park
-  Governmental/ Institutional
-  Agricultural

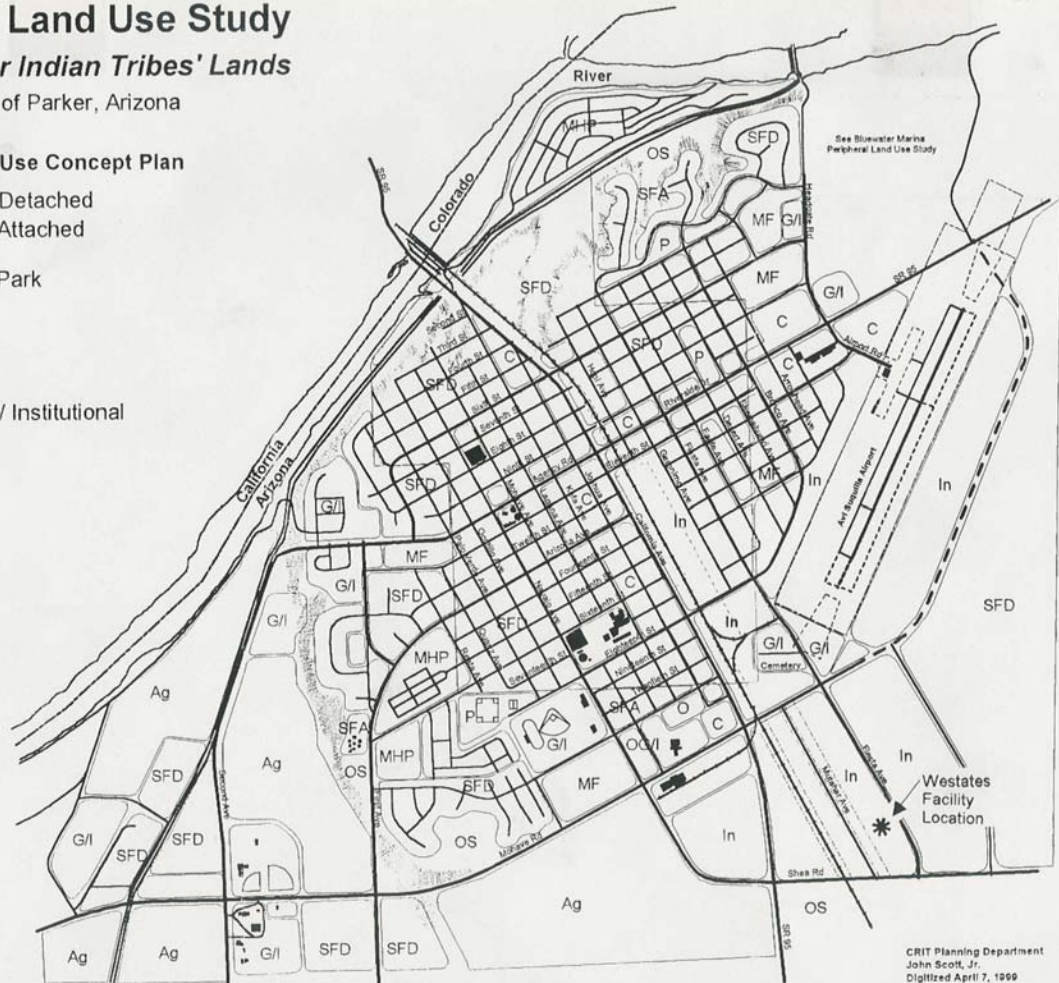
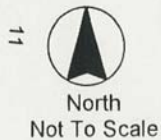
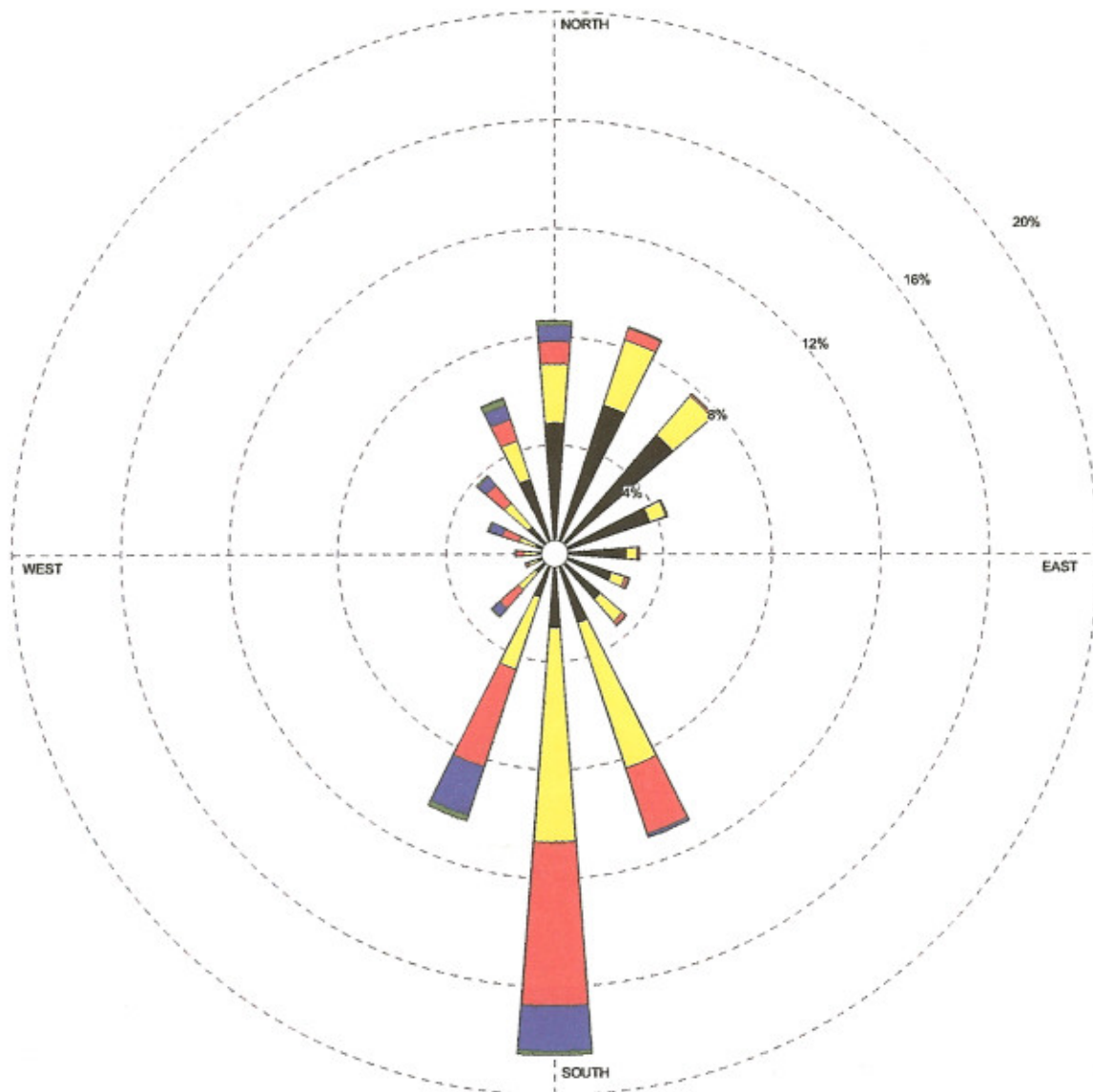


FIGURE 2. Windrose for Parker, Arizona 1997 - 2001



Wind Speed (m/s)



MODELER

CHV

DISPLAY

Wind Speed

AVG. WIND SPEED

2.64 m/s

ORIENTATION

Direction
(blowing from)

UNIT

m/s

CALM WINDS

2.01%

PLOT YEAR-DATE-TIME

97 98 99 00 01
January 1 - December 31
Midnight - 11 PM

COMPANY NAME

Focus Environmental, Inc.

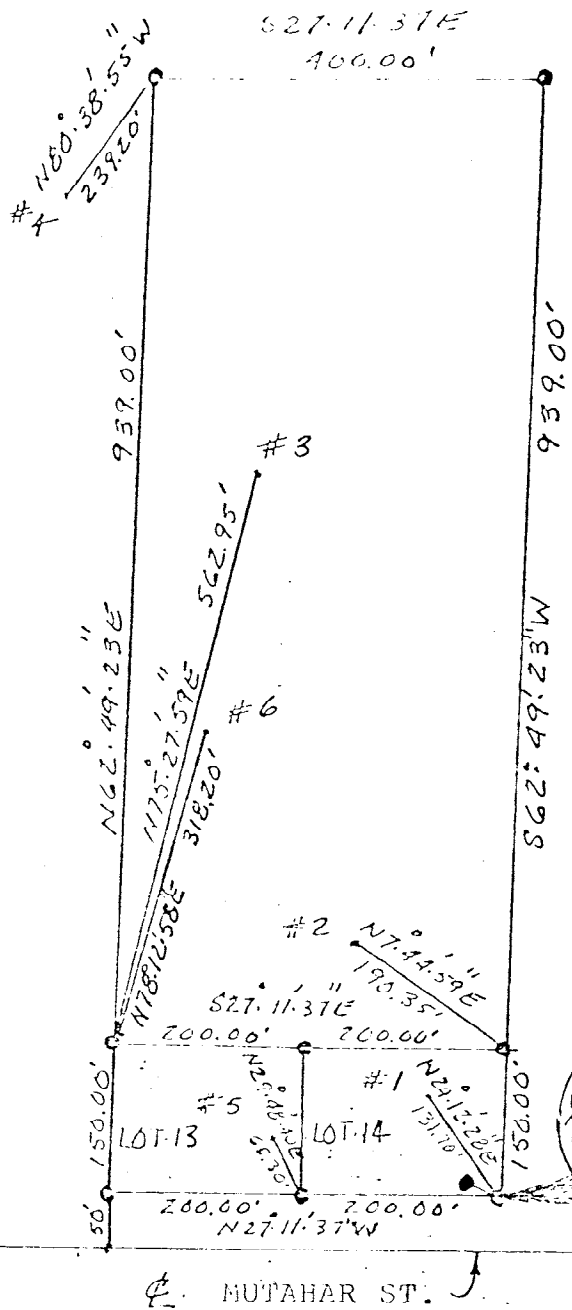
SOURCE

Arizona Meteorological Network
(AZMET) - Parker, Arizona

PROJECT/PLOT NO.

FIGURE 2

4 MOHAVE RD. 7 200.0' N62°49'23"E

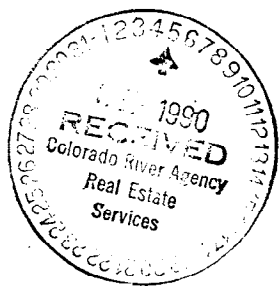


Rebar, 1/2" Diameter, 1 1/2' long, set at all corner points:

1" = 200 feet

603-119-91

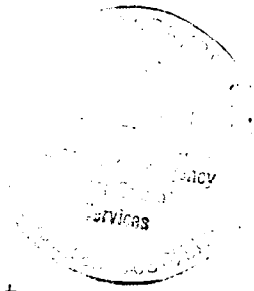
COLORADO RIVER INDUSTRIAL PARK
 BEING PART OF SECTION 7, T9NR19W
 GILA, SALT RIVER BASE MERIDIAN
 LA PAZ COUNTY, ARIZONA
 COLORADO RIVER INDIAN RESERVATION



3.2.90

March 2, 1990

COLORADO RIVER INDUSTRIAL PARK
BEING PART OF SECTION 7, T9N, R19W
G11A, SALT RIVER BASE MERIDIAN
COLORADO RIVER INDIAN RESERVATION



Starting from the intersection point of Mohave Road and Mutabar Street, existing survey monuments, Thence S27°11'.37"E, 2615.12 feet. Thence N62°49'.23"E, 50.00 feet to the Northwest corner Lot 13, and point of beginning. Thence N62°49'.23"E, 150.00 feet, to the Northeast corner Lot 13. Thence S27°11'.37"E, 200.00 feet to the Southeast corner Lot 13. Thence S27°11'.37"E, 200.00 feet to the Southeast corner Lot 14, Thence S62°49'.23"W, 150.00 feet to the Southwest corner Lot 14. Thence N27°11'.37"W, 200.00 feet, along road right away, to the Northwest corner Lot 14. Thence N27°11'.37"W, 200.00 feet, along right away, to point of beginning. The area contains a calculated area of 1.38 acres.

Thence from the Northeast corner Lot 13, N62°49'.23"E, 939.00 feet, to the Northeast corner, 8.62 acre lot. Thence S27°11'.37"E, 400 feet to the Southeast corner, 8.62 acre lot. Thence S62°49'.23"W, 939.00 feet to the Southeast corner, Lot 14. The area contains a calculated area of 8.62 acres.

Thence from the Northeast corner Lot 13, soil sample number 3, bears N75°27'.59"E, 562.95 feet. Soil sample number 6 bears N78°12'.58"E, 318.20 feet.

Thence from the Northeast corner, 8.62 acre lot, soil sample number 4, bears N80°38'.55"W, 239.20 feet.

Thence from the Southeast corner Lot 14, soil sample number 2, bears N7°44'.59"E, 190.35 feet.

Thence from the Southwest corner Lot 14, soil sample number 1, bears N24°12'.28"E, 131.70 feet. Fire hydrant bears N20°30'.06"W, 28.60 feet.

Thence from the Northwest corner Lot 14, soil sample number 5, bears N29°48'.40"E, 65.30 feet.

ENGINEER'S CERTIFICATE: I certify that I have examined this plot of the Survey and found that it conforms with the data from which it was drawn and that I am satisfied the map is technically correct.

Augustine Fisher

603-119-91