

APPENDIX III

SITE DIAGRAMS

FOR

SIEMENS WATER TECHNOLOGIES CORP.

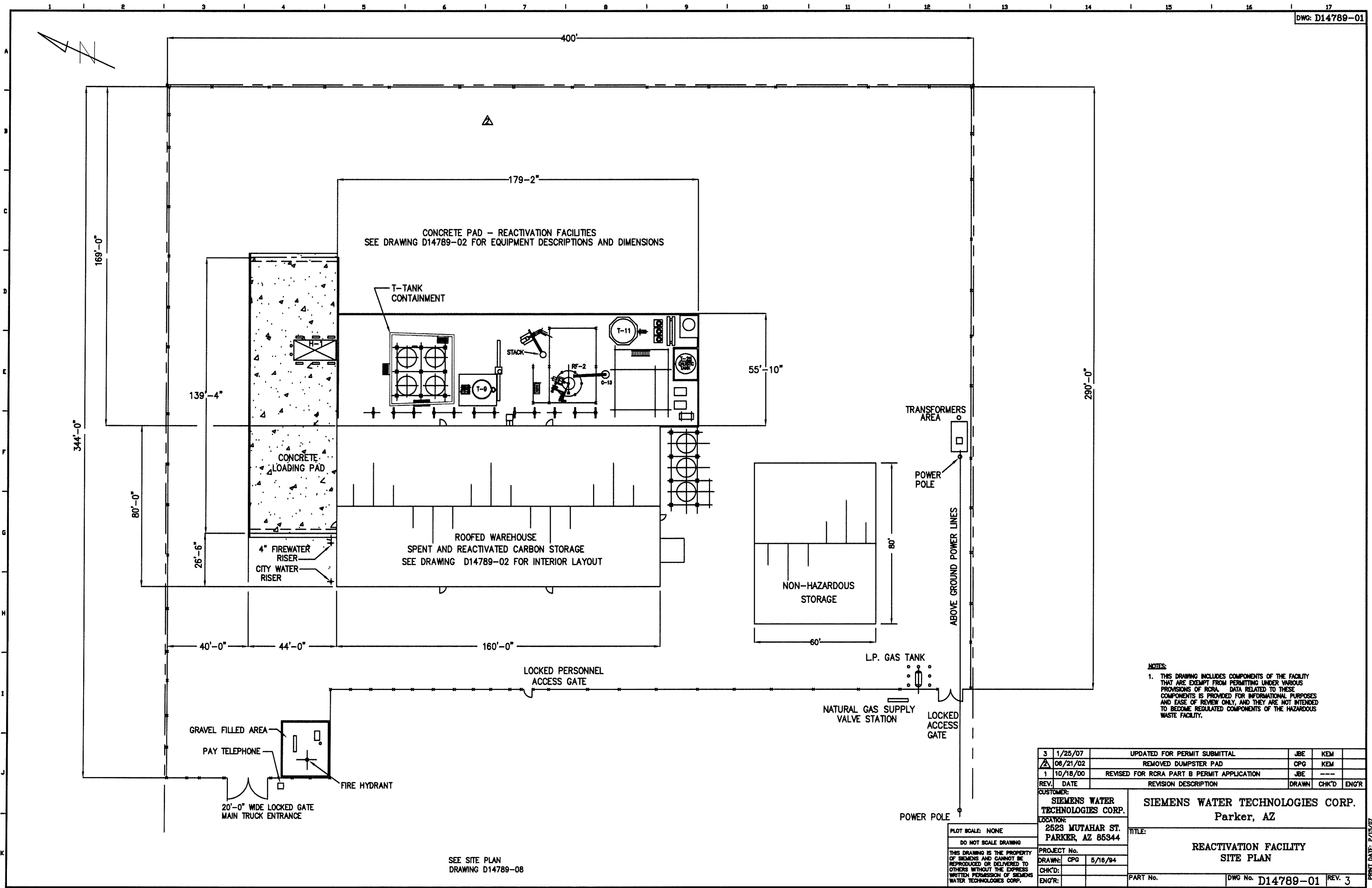
PARKER REACTIVATION FACILITY

PARKER, ARIZONA

Revision 0
February 2007

TABLE OF CONTENTS

<u>DRAWING NO.</u>	<u>DESCRIPTION</u>
D14789-01	Reactivation Facility Site Plan
D14789-02	Reactivation Facility Equipment Arrangement
D14789-03	Reactivation Facility Site View Overall Arrangements
D14789-04	Reactivation Facility Overall Arrangements
D14789-08	Reactivation Facility Site Plan
1541-CM-001	Site Contour Map
1478-P-001	Plan Views
1478-P-002	Plan Views
1478-P-003	Plan Views
1478-P-004	Elevation Looking North
1478-P-005	Elevation Looking West

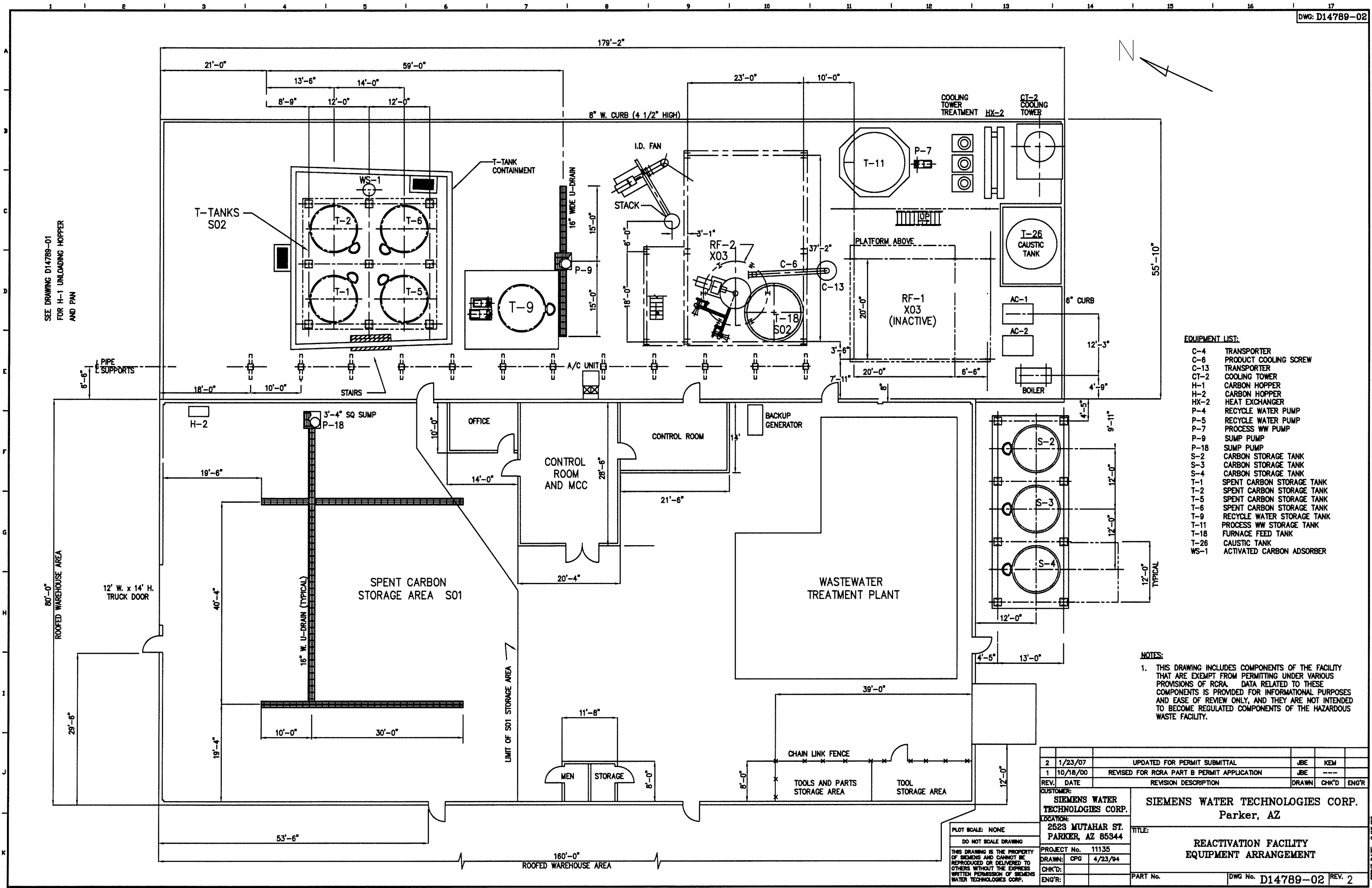


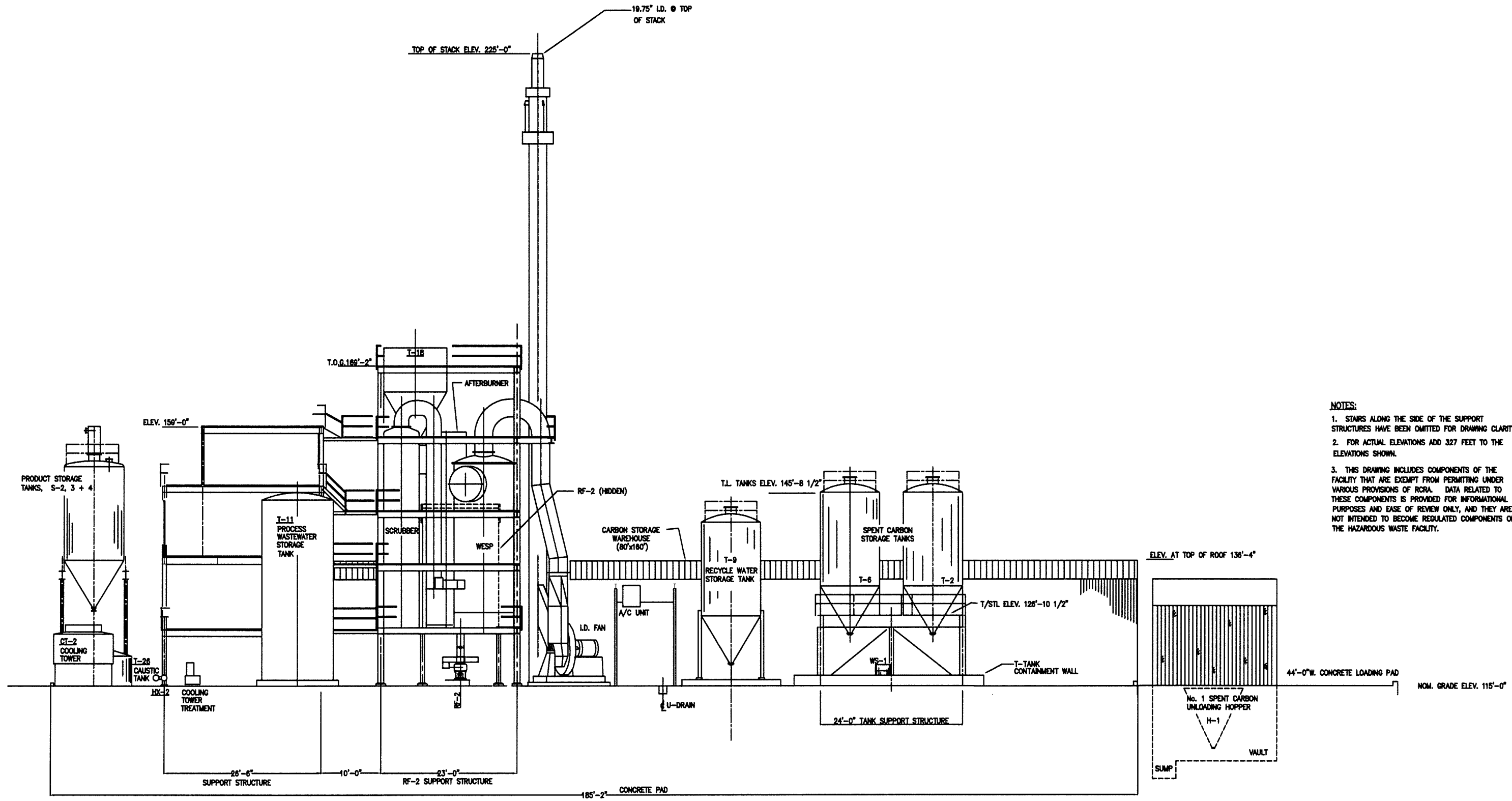
NOTES:
1. THIS DRAWING INCLUDES COMPONENTS OF THE FACILITY THAT ARE EXEMPT FROM PERMITTING UNDER VARIOUS PROVISIONS OF RCRA. DATA RELATED TO THESE COMPONENTS IS PROVIDED FOR INFORMATIONAL PURPOSES AND EASE OF REVIEW ONLY, AND THEY ARE NOT INTENDED TO BECOME REGULATED COMPONENTS OF THE HAZARDOUS WASTE FACILITY.

3	1/25/07	UPDATED FOR PERMIT SUBMITTAL	JBE	KEM	
2	06/21/02	REMOVED DUMPSTER PAD	CPG	KEM	
1	10/18/00	REVISED FOR RCRA PART B PERMIT APPLICATION	JBE	---	
REV.	DATE	REVISION DESCRIPTION	DRAWN	CHK'D	ENG'R
CUSTOMER:			SIEMENS WATER TECHNOLOGIES CORP.		
LOCATION:			2523 MUTAHAR ST. PARKER, AZ 85344		
PROJECT No.			2523 MUTAHAR ST. PARKER, AZ 85344		
DRAWN:			CPG 5/16/94		
CHK'D:					
ENG'R:					
TITLE:			SIEMENS WATER TECHNOLOGIES CORP. Parker, AZ		
			REACTIVATION FACILITY SITE PLAN		
PART No.			DWG No. D14789-01 REV. 3		

SEE SITE PLAN
DRAWING D14789-08

PRINT DATE: 2/15/07



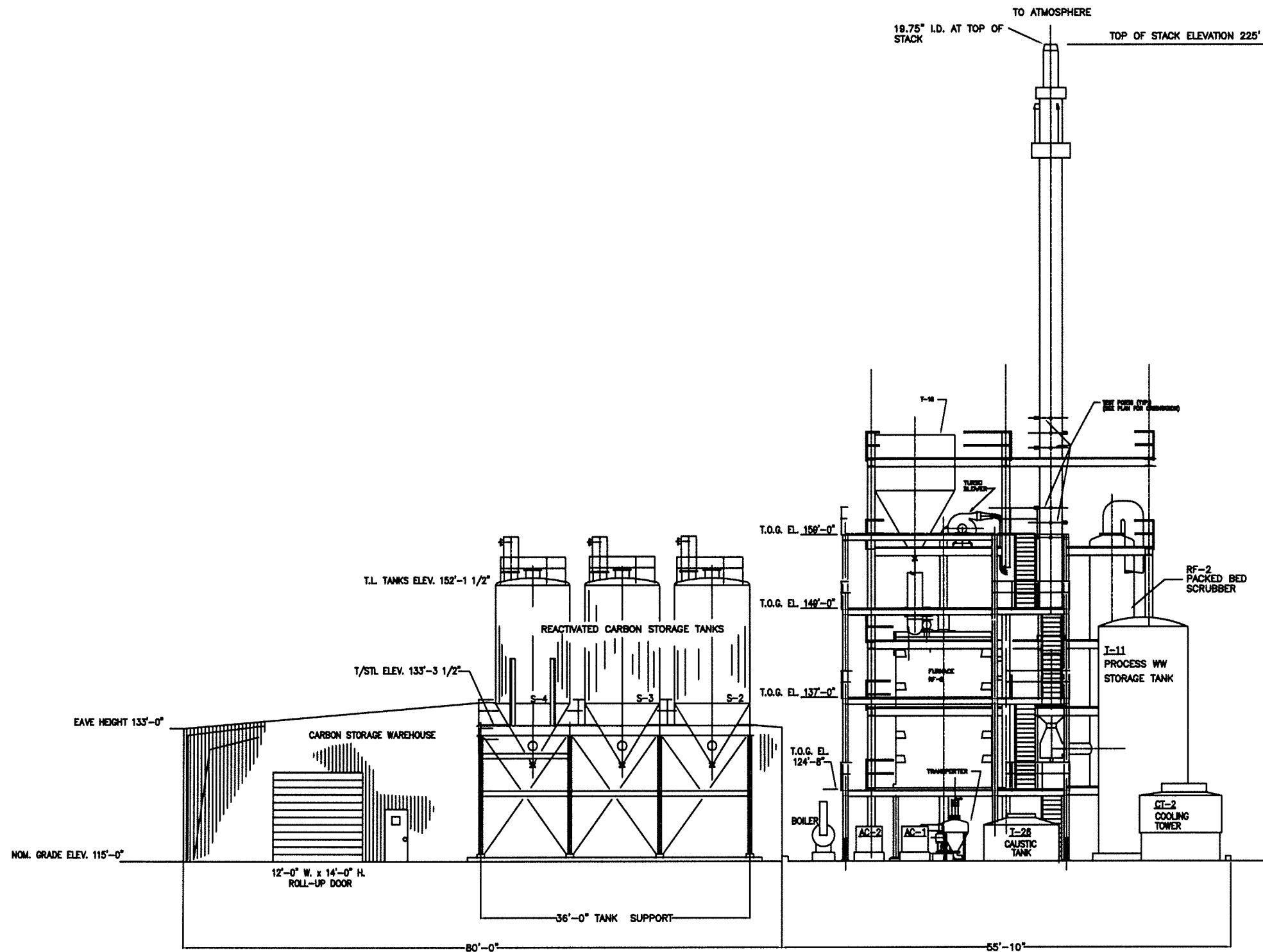


OVERALL SITE VIEW LOOKING SOUTHWEST

- NOTES:
1. STAIRS ALONG THE SIDE OF THE SUPPORT STRUCTURES HAVE BEEN OMITTED FOR DRAWING CLARITY.
 2. FOR ACTUAL ELEVATIONS ADD 327 FEET TO THE ELEVATIONS SHOWN.
 3. THIS DRAWING INCLUDES COMPONENTS OF THE FACILITY THAT ARE EXEMPT FROM PERMITTING UNDER VARIOUS PROVISIONS OF RCRA. DATA RELATED TO THESE COMPONENTS IS PROVIDED FOR INFORMATIONAL PURPOSES AND EASE OF REVIEW ONLY, AND THEY ARE NOT INTENDED TO BECOME REGULATED COMPONENTS OF THE HAZARDOUS WASTE FACILITY.

PLOT SCALE: NONE
DO NOT SCALE DRAWING
THIS DRAWING IS THE PROPERTY OF SIEMENS WATER TECHNOLOGIES CORP. AND CANNOT BE REPRODUCED OR DELIVERED TO OTHERS WITHOUT THE EXPRESS WRITTEN PERMISSION OF SIEMENS WATER TECHNOLOGIES CORP.

2	1/18/07	UPDATED FOR PERMIT SUBMITTAL	JBE	KEM	
1	7/24/02	REVISED FOR RCRA PART B PERMIT APPLICATION	CPG	KEM	
REV.	DATE	REVISION DESCRIPTION	DRAWN	CHK'D	ENG'R
CUSTOMER:			SIEMENS WATER TECHNOLOGIES CORP.		
LOCATION:			Parker, AZ		
PROJECT No.			TITLE:		
DRAWN: CPG			REACTIVATION FACILITY		
CHK'D: 4/21/04			SITE VIEW		
ENG'R:			OVERALL ARRANGEMENTS		
PART No.			DWG No. D14789-03		
			REV. 2		



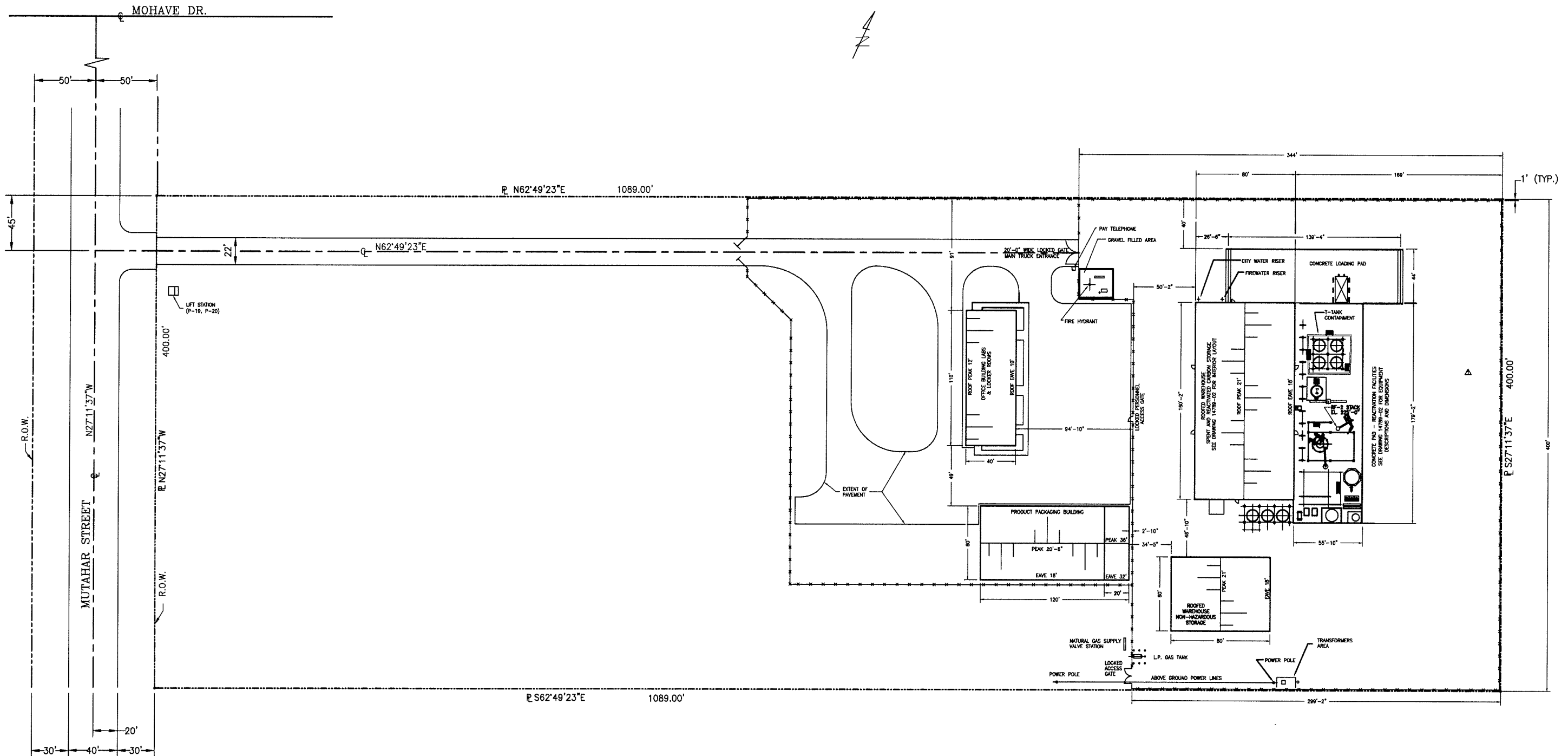
OVERALL SITE VIEW LOOKING NORTHWEST

NOTES:

1. THIS DRAWING INCLUDES COMPONENTS OF THE FACILITY THAT ARE EXEMPT FROM PERMITTING UNDER VARIOUS PROVISIONS OF RCRA. DATA RELATED TO THESE COMPONENTS IS PROVIDED FOR INFORMATIONAL PURPOSES AND EASE OF REVIEW ONLY, AND THEY ARE NOT INTENDED TO BECOME REGULATED COMPONENTS OF THE HAZARDOUS WASTE FACILITY.
2. FOR ACTUAL ELEVATIONS ADD 327 FEET TO THE ELEVATIONS SHOWN.

2	1/18/07	UPDATED FOR PERMIT SUBMITTAL	JBE	KEM	
1	7/18/02	REVISED FOR RCRA PART B PERMIT APPLICATION	STA	KEM	
REV.	DATE	REVISION DESCRIPTION	DRAWN	CHK'D	ENG'R
CUSTOMER:					
SIEMENS WATER TECHNOLOGIES CORP			SIEMENS WATER TECHNOLOGIES CORP.		
LOCATION:			Parker, AZ		
2523 MUTAHAR ST. PARKER, AZ 85344			TITLE:		
PROJECT No. 11135			REACTIVATION FACILITY OVERALL ARRANGEMENTS		
DRAWN: CPG 4/21/04			PART No.		
CHK'D:			DWG No. D14789-04		
ENG'R:			REV. 2		

PLOT SCALE: NONE
DO NOT SCALE DRAWING
THIS DRAWING IS THE PROPERTY OF SIEMENS AND CANNOT BE REPRODUCED OR DELIVERED TO OTHERS WITHOUT THE EXPRESS WRITTEN PERMISSION OF SIEMENS WATER TECHNOLOGIES CORP.



NOTES:

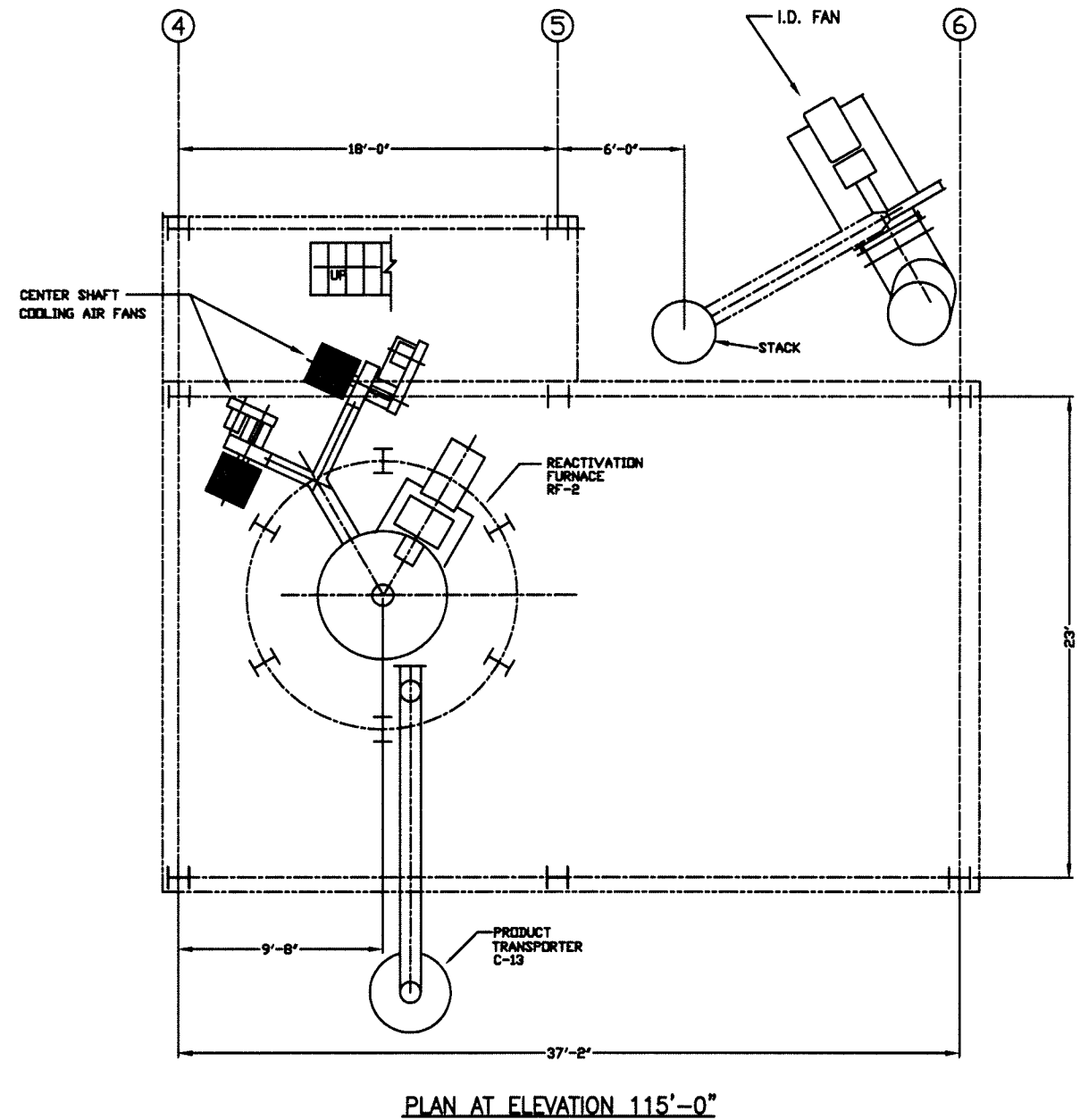
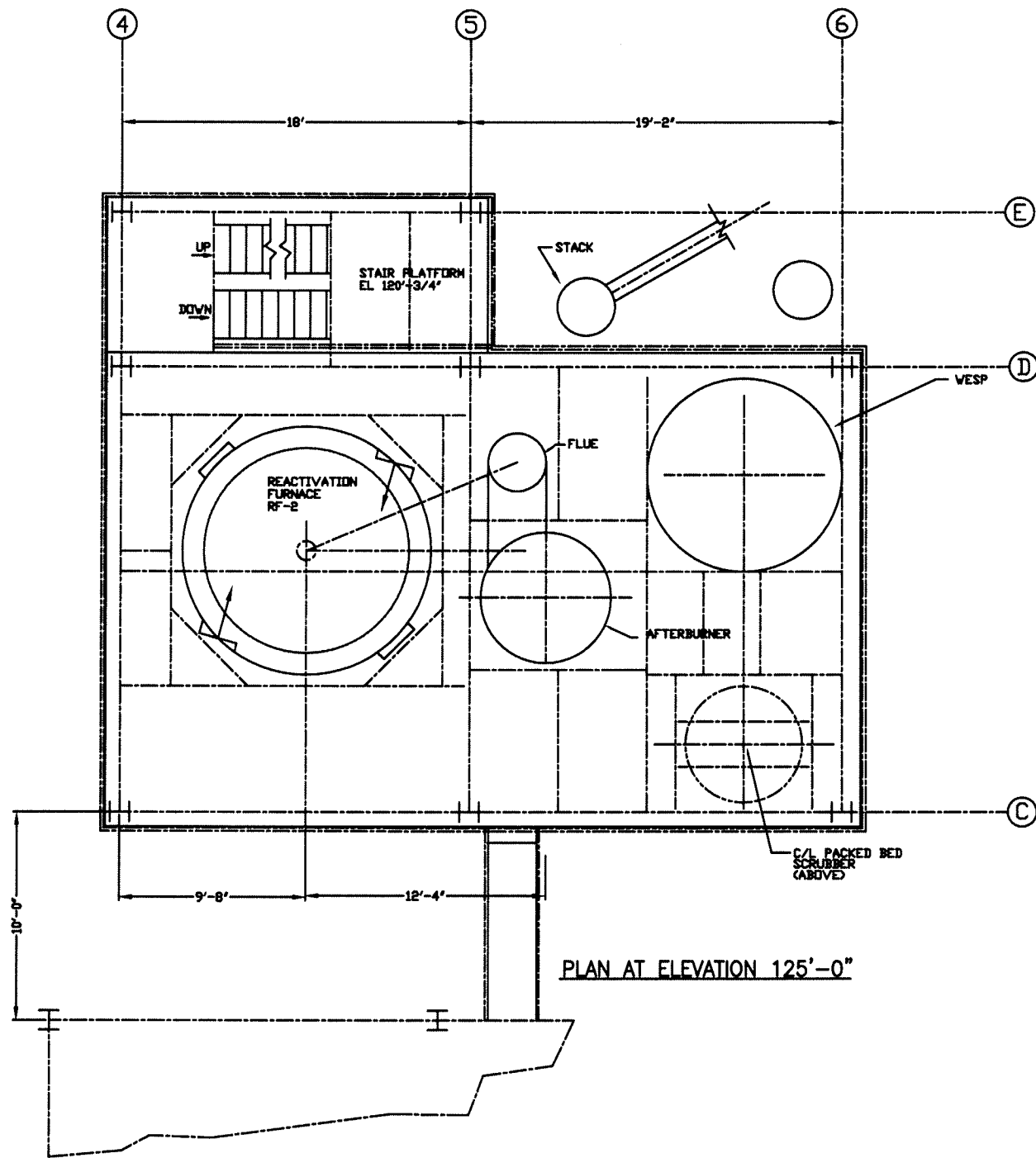
1. THIS DRAWING INCLUDES COMPONENTS OF THE FACILITY THAT ARE EXEMPT FROM PERMITTING UNDER VARIOUS PROVISIONS OF RCRA. DATA RELATED TO THESE COMPONENTS IS PROVIDED FOR INFORMATIONAL PURPOSES AND EASE OF REVIEW ONLY, AND THEY ARE NOT INTENDED TO BECOME REGULATED COMPONENTS OF THE HAZARDOUS WASTE FACILITY.

PLOT SCALE: 1"=40'

DO NOT SCALE DRAWING

THIS DRAWING IS THE PROPERTY OF SIEMENS AND CANNOT BE REPRODUCED OR DELIVERED TO OTHERS WITHOUT THE EXPRESS WRITTEN PERMISSION OF SIEMENS WATER TECHNOLOGIES CORP.

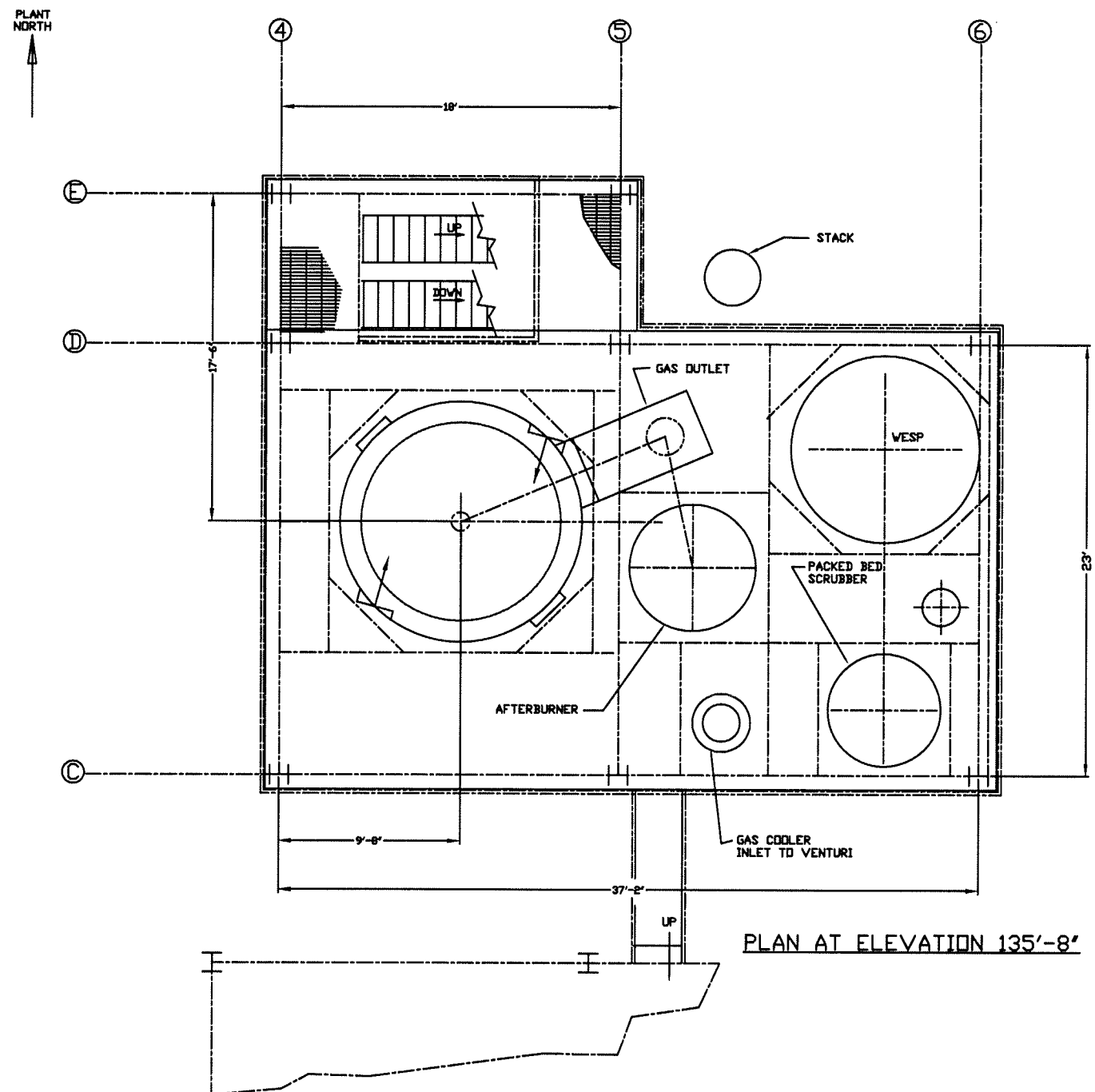
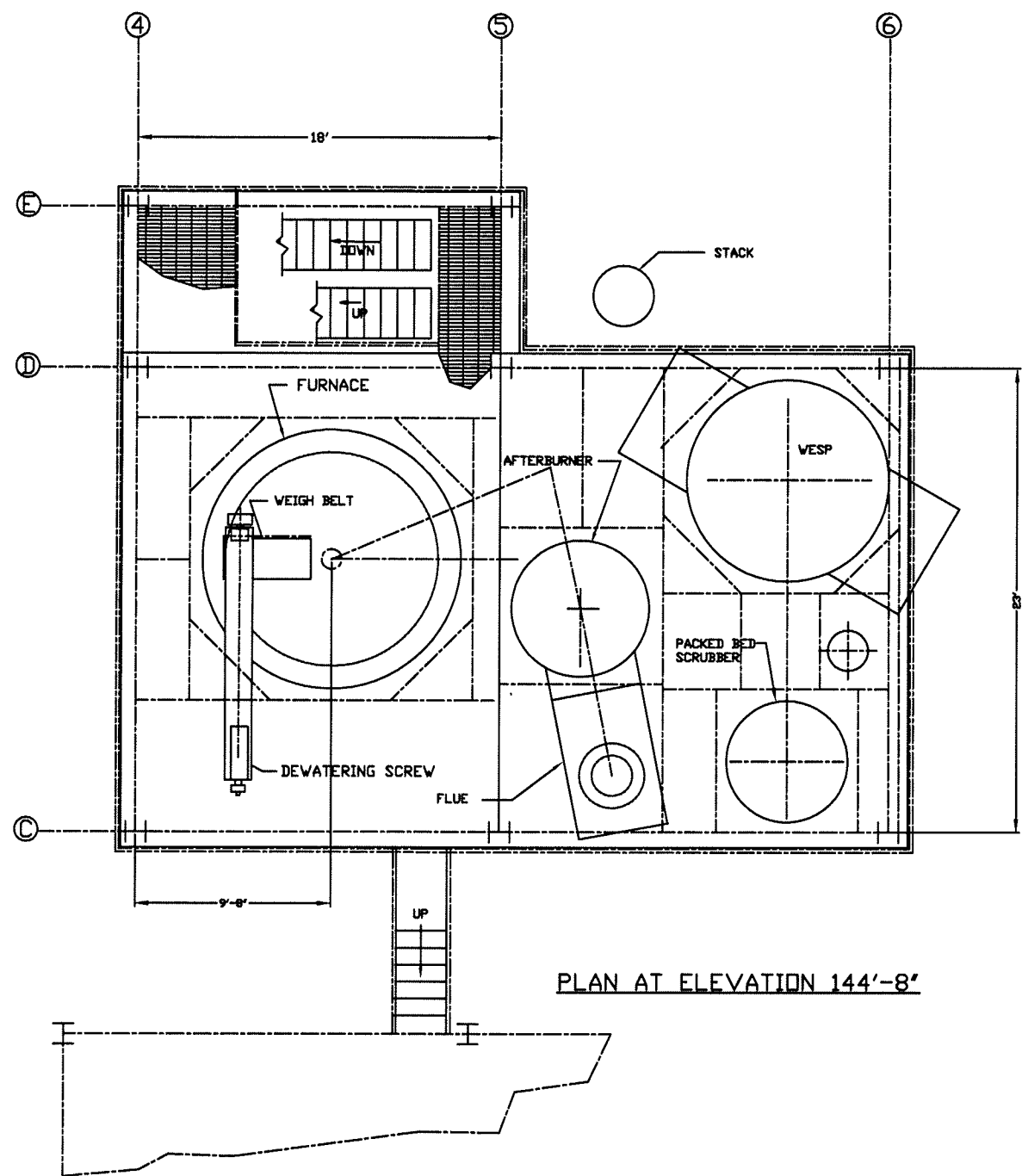
2	1/18/07	UPDATED FOR PERMIT SUBMITTAL	JBE	KEM	
Δ	6/21/02	REMOVED DUMPSTER PAD	CPG	KEM	
REV.	DATE	REVISION DESCRIPTION	DRAWN	CHK'D	ENG'R
CUSTOMER: SIEMENS WATER TECHNOLOGIES CORP.			SIEMENS WATER TECHNOLOGIES CORP. Parker, AZ		
LOCATION: 2523 MUTAHAR ST. PARKER, AZ 85344			TITLE: REACTIVATION FACILITY SITE PLAN		
PROJECT No. DRAWN: CPG 3/01/02 CHK'D: KEM 3/01/02 ENG'R:			PART No. DWG No. D14789-08 REV. 2		



- NOTES:**
1. THIS DRAWING INCLUDES COMPONENTS OF THE FACILITY THAT ARE EXEMPT FROM PERMITTING UNDER VARIOUS PROVISIONS OF RCRA. DATA RELATED TO THESE COMPONENTS IS PROVIDED FOR INFORMATIONAL PURPOSES AND EASE OF REVIEW ONLY, AND THEY ARE NOT INTENDED TO BECOME REGULATED COMPONENTS OF THE HAZARDOUS WASTE FACILITY.

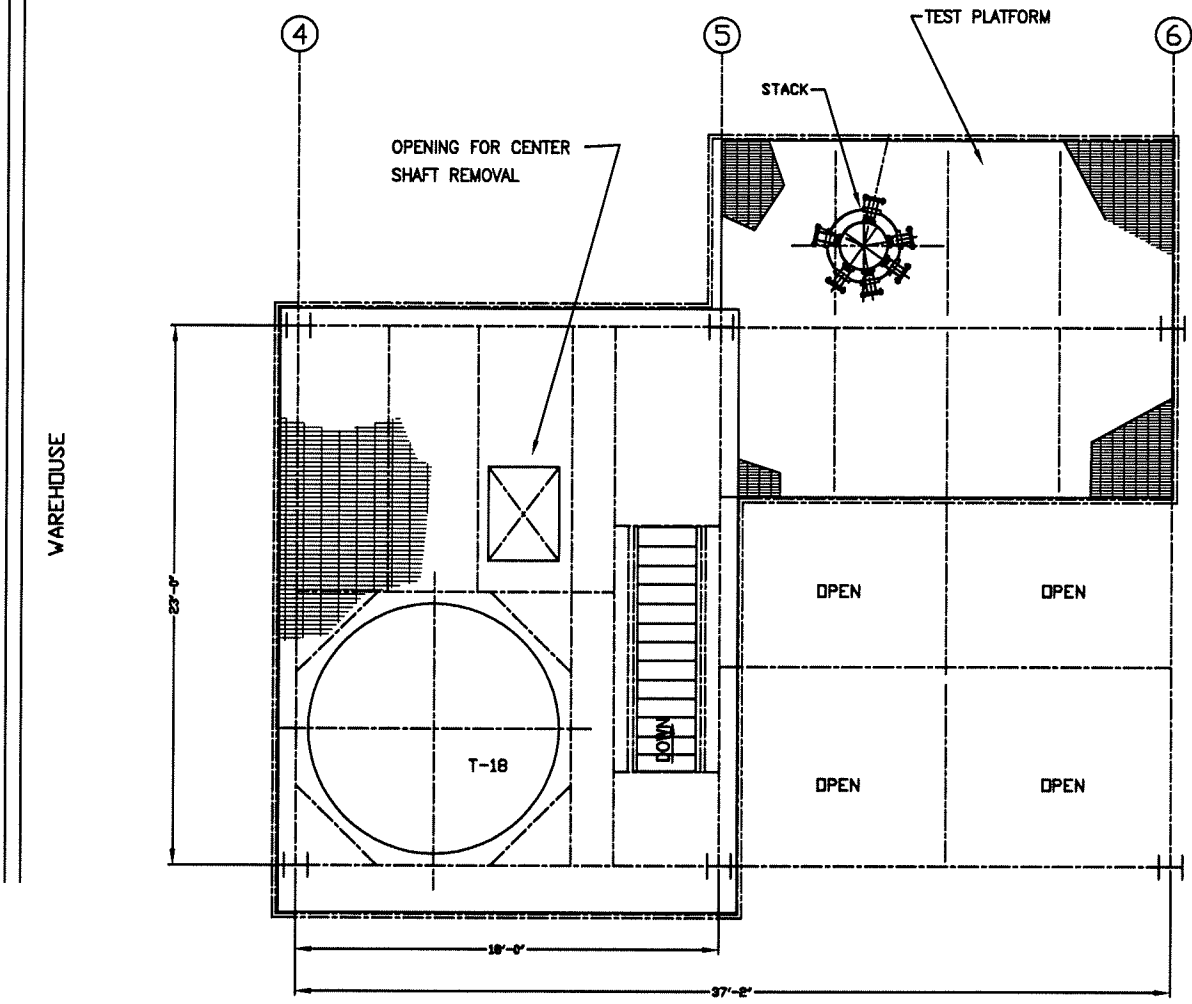
4'-0"

NO.	DWN	CK'D	APP	REVISIONS	DATE
CBE CHAVOND-BARRY ENGINEERING CORP.					
400 Route 518 • P.O. Box 205 • Blawenburg, New Jersey 08504					
SIEMENS WATER TECHNOLOGIES CORP.					
2523 MUTAHAR STREET, PARKER, AZ 85344					
CARBON REGENERATION SYSTEM					
PLAN VIEWS					
DRAWN		CHECKED		APPROVED	
CPG	5/12/94	KEM	5/13/94		
SCALE		DWG. NO.		REV.	
1/4"=1'-0"		1478-P-001		0	

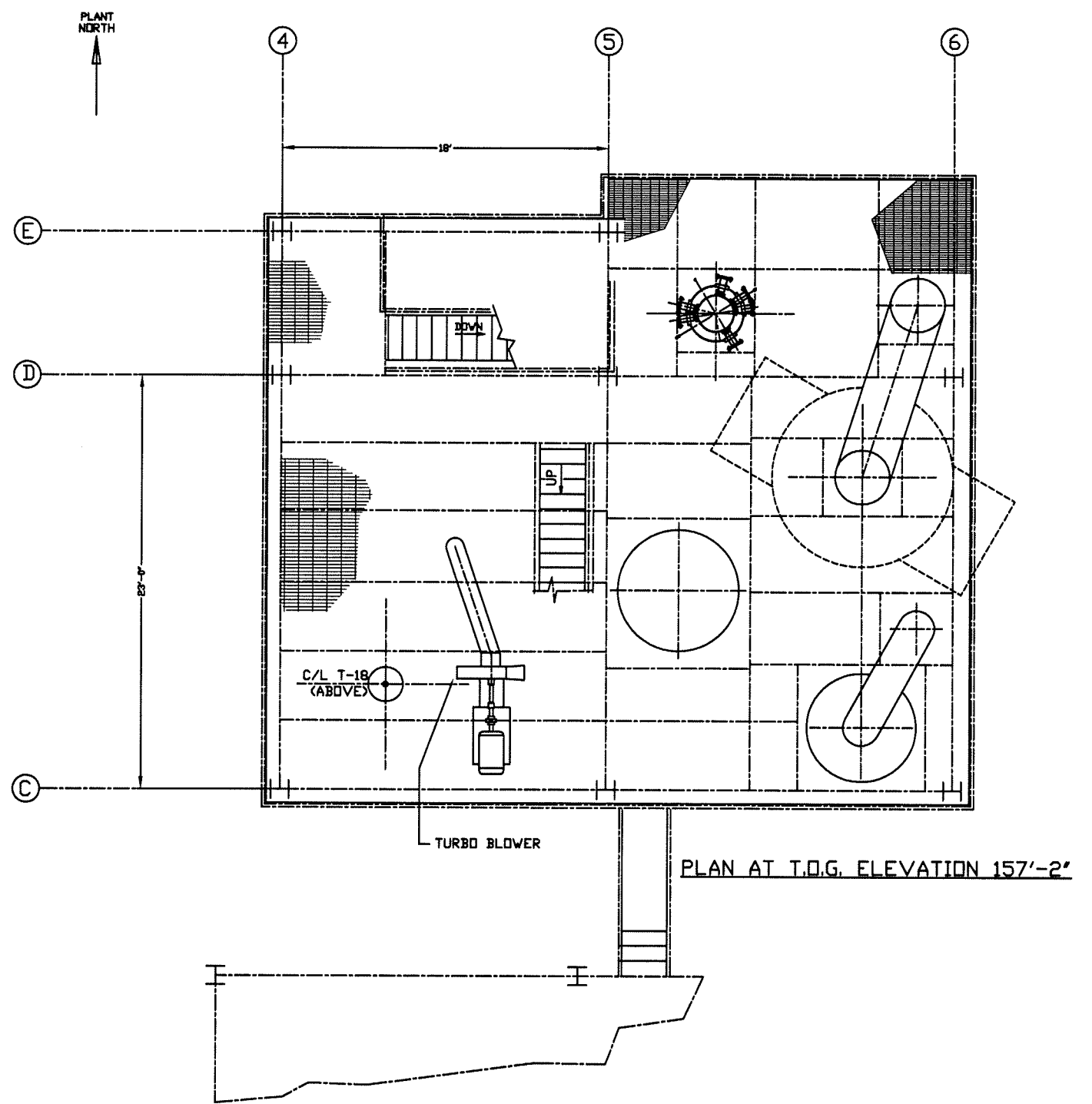


- NOTES:**
1. THIS DRAWING INCLUDES COMPONENTS OF THE FACILITY THAT ARE EXEMPT FROM PERMITTING UNDER VARIOUS PROVISIONS OF RCRA. DATA RELATED TO THESE COMPONENTS IS PROVIDED FOR INFORMATIONAL PURPOSES AND EASE OF REVIEW ONLY, AND THEY ARE NOT INTENDED TO BECOME REGULATED COMPONENTS OF THE HAZARDOUS WASTE FACILITY.

NO	DWN	CK'D	APP	REVISIONS	DATE
CBE CHAVOND-BARRY ENGINEERING CORP.					
400 Route 518 • P.O. Box 205 • Mendenhall, New Jersey 08504					
SIEMENS WATER TECHNOLOGIES CORP.					
2523 MUTAHAR STREET, PARKER, AZ 85344					
CARBON REGENERATION SYSTEM					
PLAN VIEWS					
DRAWN		CHECKED		APPROVED	
CPG	5/12/94	KEM	5/13/94		
SCALE		DWG. NO.		REV.	
1/4"=1'-0"		1478-P-002		0	



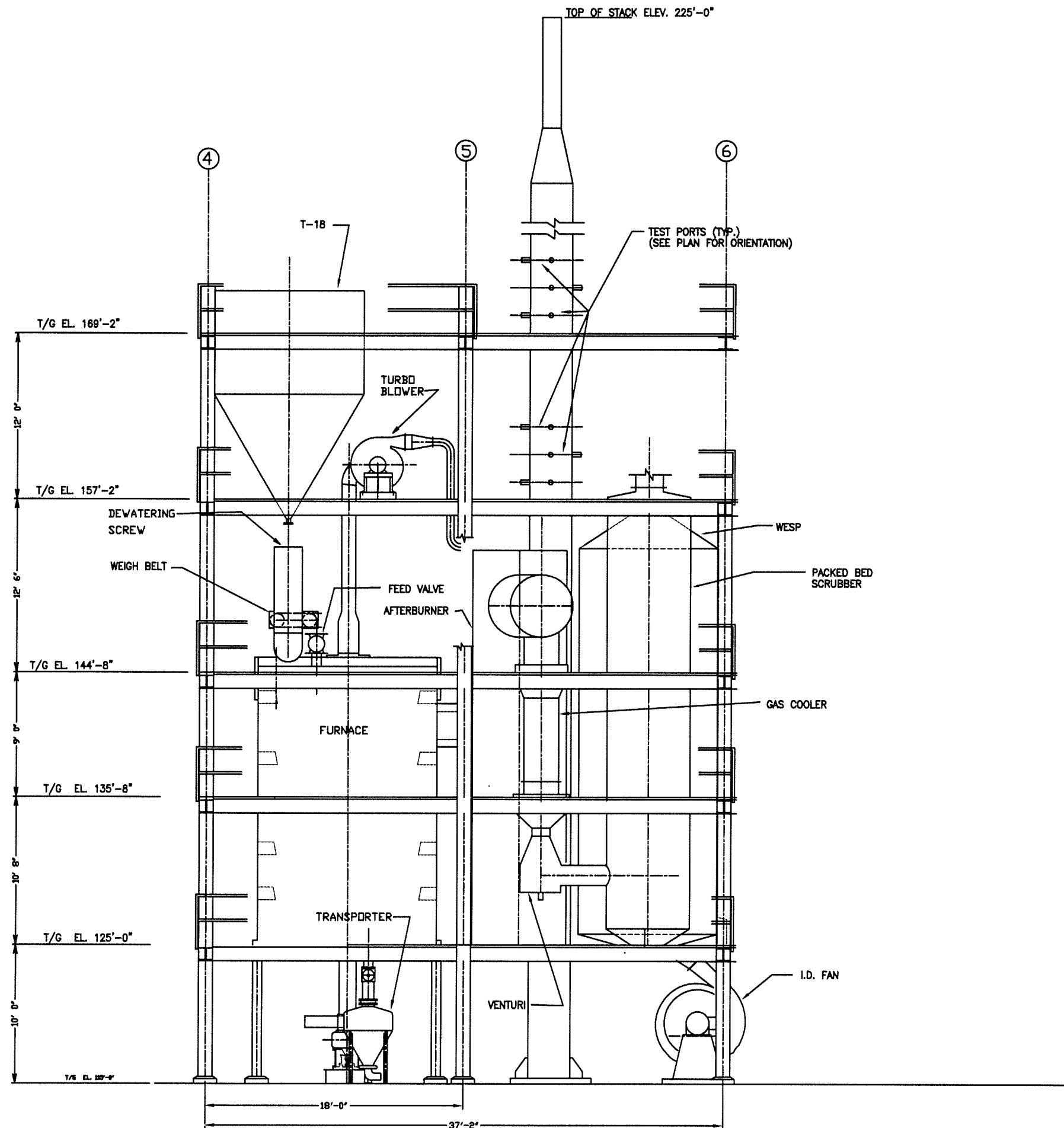
PLAN AT T.O.G. ELEVATION 169'-2"



- NOTES:**
- THIS DRAWING INCLUDES COMPONENTS OF THE FACILITY THAT ARE EXEMPT FROM PERMITTING UNDER VARIOUS PROVISIONS OF RCRA. DATA RELATED TO THESE COMPONENTS IS PROVIDED FOR INFORMATIONAL PURPOSES AND EASE OF REVIEW ONLY, AND THEY ARE NOT INTENDED TO BECOME REGULATED COMPONENTS OF THE HAZARDOUS WASTE FACILITY.

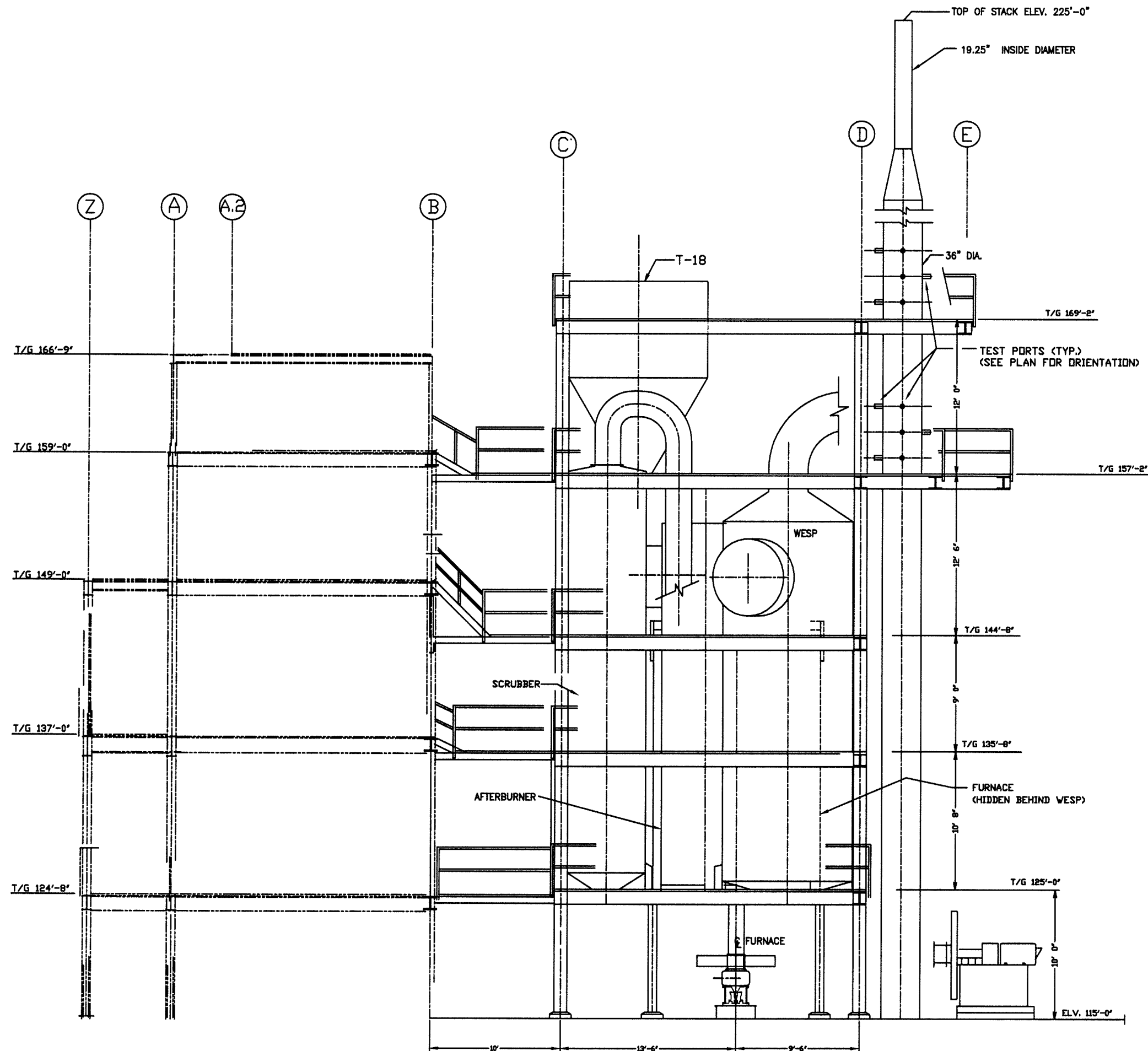
4'-0"

NO	DWN	CK'D	APP	REVISIONS	DATE
CBE CHAVOND-BARRY ENGINEERING CORP.					
400 Route 518 • P.O. Box 205 • Blawenburg, New Jersey 08504					
SIEMENS WATER TECHNOLOGIES CORP.					
2523 MUTAHAR STREET, PARKER, AZ 85344					
CARBON REGENERATION SYSTEM					
PLAN VIEWS					
DRAWN		CHECKED		APPROVED	
CPG 5/12/94		KEM 5/13/94			
SCALE		DWG. NO.		REV.	
1/4"=1'-0"		1478-P-003		0	



- NOTES:**
1. THIS DRAWING INCLUDES COMPONENTS OF THE FACILITY THAT ARE EXEMPT FROM PERMITTING UNDER VARIOUS PROVISIONS OF RCRA. DATA RELATED TO THESE COMPONENTS IS PROVIDED FOR INFORMATIONAL PURPOSES AND EASE OF REVIEW ONLY, AND THEY ARE NOT INTENDED TO BECOME REGULATED COMPONENTS OF THE HAZARDOUS WASTE FACILITY.
 2. FOR ACTUAL ELEVATIONS ADD 327 FEET TO THE ELEVATIONS SHOWN.

NO	DWN	CK'D	APP	REVISIONS	DATE
CBE CHAVOND-BARRY ENGINEERING CORP. 400 Route 518 • P.O. Box 205 • Blawenburg, New Jersey 08504					
SIEMENS WATER TECHNOLOGIES CORP. 2523 MUTAHAR STREET, PARKER, AZ 85344 CARBON REGENERATION SYSTEM					
ELEVATION LOOKING NORTH					
DRAWN		CHECKED		APPROVED	
DATE		DATE		DATE	
CPG 5/12/94		KEM 5/13/94			
SCALE		DWG. NO.		REV.	
1/4"=1'-0"		1478-P-004		0	



NOTES:

1. THIS DRAWING INCLUDES COMPONENTS OF THE FACILITY THAT ARE EXEMPT FROM PERMITTING UNDER VARIOUS PROVISIONS OF RCRA. DATA RELATED TO THESE COMPONENTS IS PROVIDED FOR INFORMATIONAL PURPOSES AND EASE OF REVIEW ONLY, AND THEY ARE NOT INTENDED TO BECOME REGULATED COMPONENTS OF THE HAZARDOUS WASTE FACILITY.
2. STAIRS ALONG THE SIDE OF THE SUPPORT STRUCTURES HAVE BEEN OMITTED FOR DRAWING CLARITY.
3. FOR ACTUAL ELEVATIONS ADD 327 FEET TO THE ELEVATIONS SHOWN.

NO	DWN	CK'D	APP	REVISIONS	DATE
CBE CHAVOND-BARRY ENGINEERING CORP. 400 Route 518 • P.O. Box 205 • Blawenburg, New Jersey 08504					
SIEMENS WATER TECHNOLOGIES CORP. 2523 MUTAHAR STREET, PARKER, AZ 85344 CARBON REGENERATION SYSTEM					
ELEVATION LOOKING WEST					
DRAWN		CHECKED		APPROVED	
CPG		KEM			
DATE		DATE		DATE	
5/12/94		5/13/94			
SCALE		DWG. NO.		REV.	
1/4" = 1'-0"		1478-P-005		0	