

APPENDIX VIII

SPENT CARBON CONTAINER SPECIFICATIONS

FOR

SIEMENS WATER TECHNOLOGIES CORP.

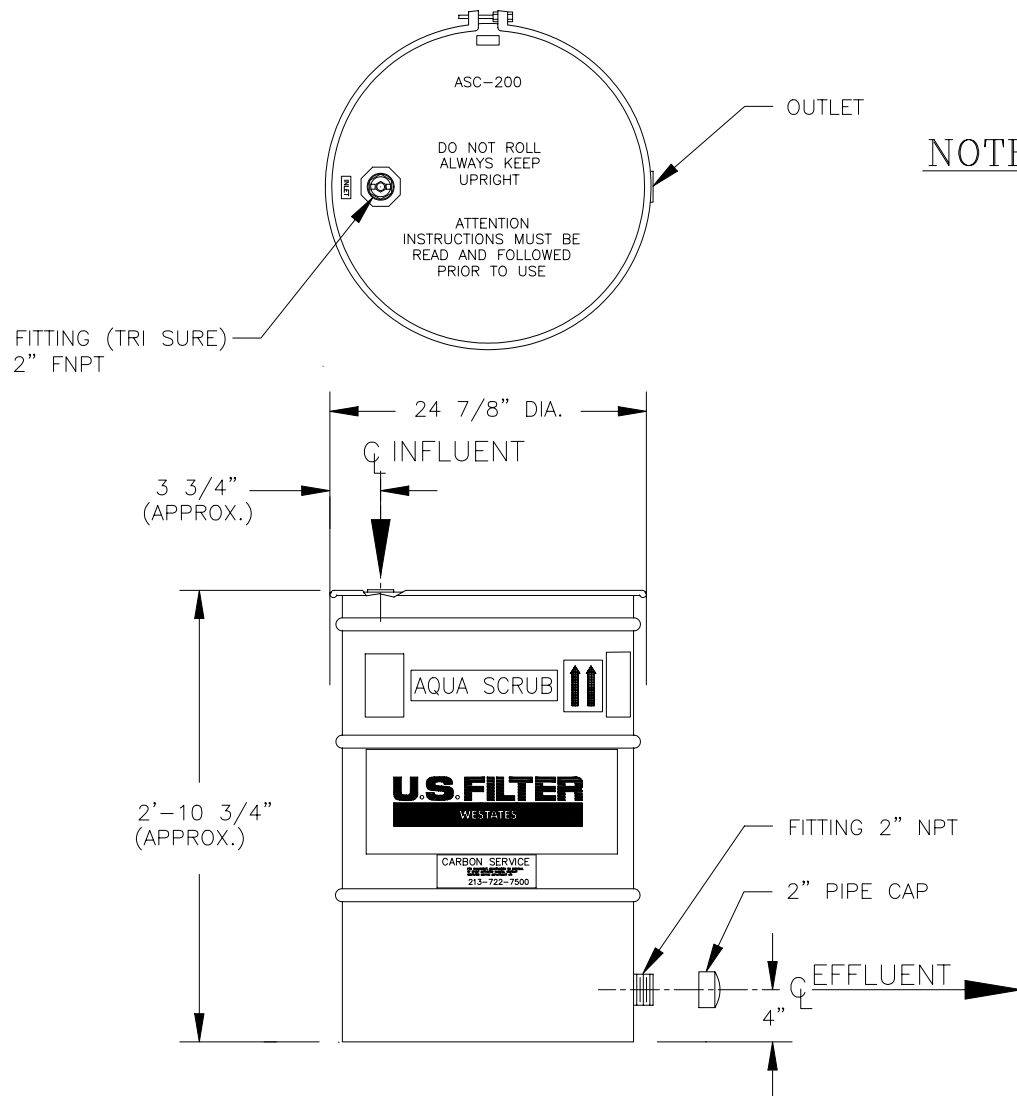
PARKER REACTIVATION FACILITY

PARKER, ARIZONA

Revision 0
February 2007

TABLE OF CONTENTS

<u>DRAWING NO.</u>	<u>DESCRIPTION</u>
ASC200GENASSY	ASC 200 General Assembly
ASC1000SHEET1	ASC1000 General Assembly
ASC2000SHEET1	ASC2000 General Assembly
PV1000SHEET1	PV1000 General Assembly
PV2000SHEET1	PV2000 General Assembly
RB20 OS A SIZE	RB20 General Assembly
RB10 OSGENASSY	RB10 OS General Assembly
RB12HVGENASSY	RB12HV General Assembly
RB20 8X11	RB20 General Assembly
2220	1800 Cu. Ft Aluminum Pneumatic Semi
VSC200GENASSY	VSC200 General Assembly
VSC400	VSC400 General Assembly
VSC1000SHEET1	VSC1000 General Assembly
VSC2000SHEET1	VSC2000 General Assembly
VSC2000GENASSY	Vapor Scrub Assembly VSC 2000
VSC3000GENASSY	VSC3000 General Assembly



NOTES:

1. CARBON:
AS REQUIRED.
2. MATERIALS OF CONSTRUCTION:
VESSEL:CARBON STEEL
EXTERNAL COATING:HIGH GLOSS PAINT, WESTATES BLUE
INTERNAL COATING:CURED EPOXY
INTERNAL DISTRIBUTION:PVC

3. SPECIFICATIONS:
FLOW * - GPM (MAX): 10
PRESSURE - PSIG (MAX): 15
TEMPERATURE - DEG F (MAX): 140
CARBON FILL VOLUME - CU FT: 6.9
CROSS SECTION - SQ FT: 2.8
SHIPPING WEIGHT - LBS: (APPROX,) 250
OPERATING WEIGHT - LBS: (APPROX,) 500

* NOTE: ACTUAL DESIGN SHOULD BE BASED ON SUPERFICIAL BED VELOCITY (SBV) AS REQUIRED FOR SPECIFIC CONTAMINANTS.

COMPANY CONFIDENTIAL
THIS DOCUMENT AND ALL INFORMATION CONTAINED HEREIN ARE THE PROPERTY OF THE USFILTER AND/OR ITS AFFILIATES ("USF"). THE DESIGN CONCEPTS AND INFORMATION CONTAINED HEREIN ARE PROPRIETARY TO USF AND ARE SUBMITTED IN CONFIDENCE. THEY ARE NOT TRANSFERABLE AND MUST BE USED ONLY FOR THE PURPOSE FOR WHICH THE DOCUMENT IS EXPRESSLY LOANED. THEY MUST NOT BE DISCLOSED, REPRODUCED, LOANED OR USED IN ANY OTHER MANNER WITHOUT THE EXPRESS WRITTEN CONSENT OF USF. IN NO EVENT SHALL THEY BE USED IN ANY MANNER DETRIMENTAL TO THE INTEREST OF USF. ALL PATENT RIGHTS ARE RESERVED. UPON THE DEMAND OF USF, THIS DOCUMENT, ALONG WITH ALL COPIES AND EXTRACTS, AND ALL RELATED NOTES AND ANALYSES, MUST BE RETURNED TO USF OR DESTROYED, AS INSTRUCTED BY USF. ACCEPTANCE OF THE DELIVERY OF THIS DOCUMENT CONSTITUTES AGREEMENT TO THESE TERMS AND CONDITIONS.

DESIGNER	DATE
AJA	2-13-01
CHECKER	DATE
ENGINEER	DATE
MANAGER	DATE
FILE:	
SCALE: NONE	

TITLE ASC 200 GENERAL ASSEMBLY

CLIENT

USFilter

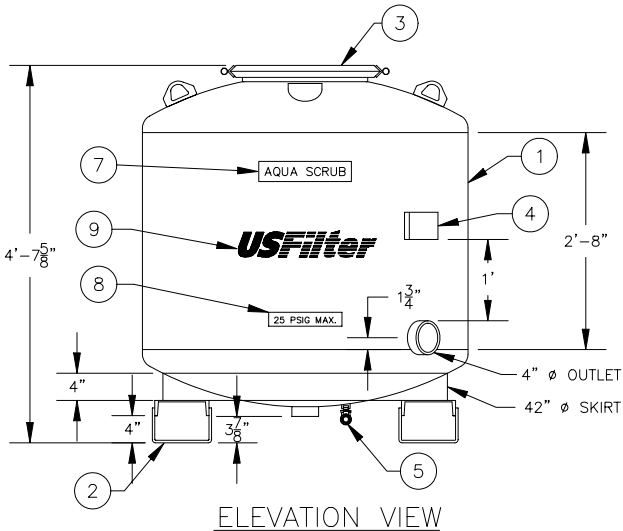
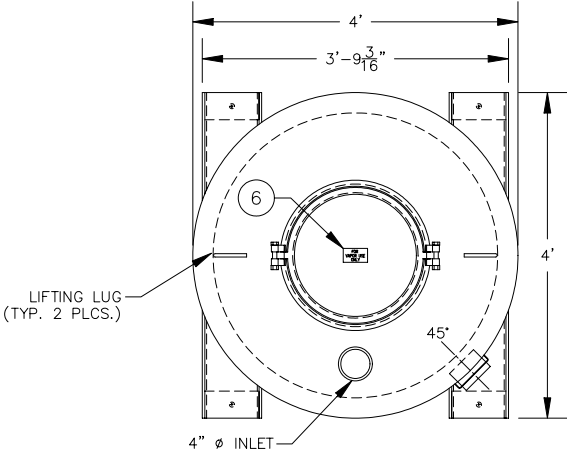
USFILTER/WESTATES
RED BLUFF, CA
1-800-795-2664

PROJECT

DRAWING
ASC200GENASSY

SHEET
OF

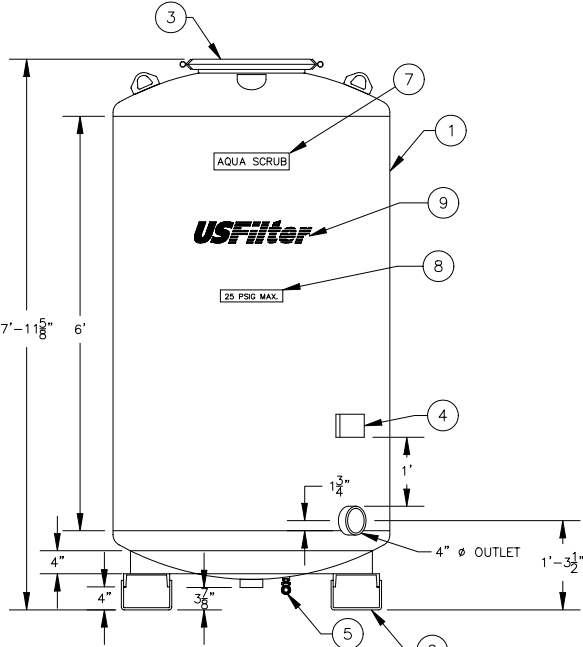
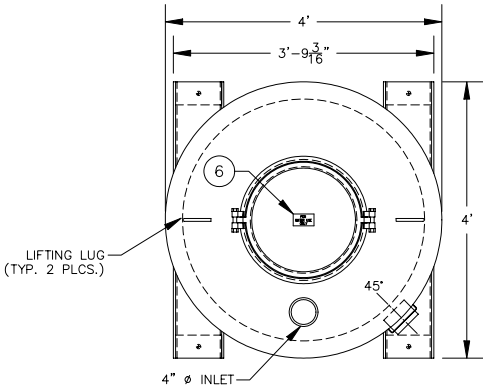
REV



LIST OF COMPONENTS		
ITEM	QTY	DESCRIPTION
1	1	TANK ASSEMBLY
2	1	SKID ASSEMBLY
3	1	MANWAY ASSEMBLY, 18" DIA.
4	1	PLATE, I.D. & SERIAL NUMBER
5	1	BRONZE BALL VALVE, 3/4"
6	1	DECAL, "FOR WATER USE ONLY", 2 1/2" x 4 1/4"
7	2	DECAL, "AQUA-SCRUB", WHITE MYLAR
8	2	DECAL, "25 PSIG MAX", WHITE MYLAR
9	2	DECAL, "USFILTER/WESTATES" WHITE MYLAR W/BUE LETTERS


- NOTES:
- DESIGN DATA:**
48" DIAMETER PRESSURE VESSEL-25 PSIG(MAX)
@ 120°F-NOT ASME CODE STAMPED FOR AQUA USE ONLY
600 CFM
1000 LBS. ACTIVATED CARBON
 - MATERIAL:**
HEADS - SA 36-HR
SHELL - SA 36-HR
SKID - SA 36-HR
 - SURFACE PREPARATION:**
INTERIOR:
SANDBLAST: SSPC-SP-5 WHITE METAL
ABRASIVE: GARNET OR GRIT - PROFILE: 1.5-2 MILS
COATING: 3M BRAND SCOTCHKOTE 134
THICKNESS: 10-15 DFMT - COLOR: GREEN
EXTERIOR:
SANDBLAST: SSPC-SP-10 NEAR WHITE METAL
ABRASIVE: GARNET OR GRIT - PROFILE: 1.5-2 MILS
PRIMER COAT: RUST PREVENTATIVE EPOXY PRIMER (CARBOLINE 893)
THICKNESS: 4-6 DFMT - COLOR: RED
FINISH COAT: HIGH BUILD POLYURETHANE (CARBOLINE 134HG)
THICKNESS: 3-4 DFMT - COLOR: WHITE (FED. I.D.#17925)
 - LIFTING REQUIREMENTS:**
5200 LBS. MINIMUM RATING.
EST. WEIGHTS:
890 LBS. - EMPTY VESSEL
1890 LBS. - WITH CARBON
4280 LBS. - OPERATING

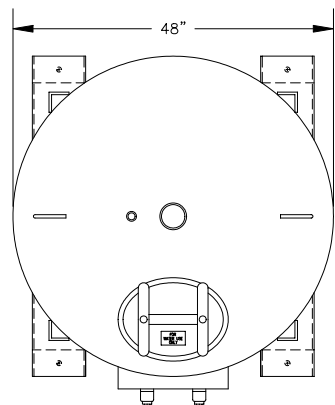
COMPANY CONFIDENTIAL THIS DOCUMENT AND ALL INFORMATION CONTAINED HEREIN ARE THE PROPERTY OF THE USFILTER AND/OR ITS AFFILIATES ("USF"). THE DESIGN CONCEPTS AND INFORMATION CONTAINED HEREIN ARE PROPRIETARY TO USF AND ARE SUBMITTED IN CONFIDENCE. THEY ARE NOT TRANSFERABLE AND MUST BE USED ONLY FOR THE PURPOSE FOR WHICH THE DOCUMENT IS EXPRESSLY LOANED. THEY MUST NOT BE DISCLOSED, REPRODUCED, LOANED OR USED IN ANY OTHER MANNER WITHOUT THE EXPRESS WRITTEN CONSENT OF USF. IN NO EVENT SHALL THEY BE USED IN ANY MANNER DETRIMENTAL TO THE INTEREST OF USF. ALL PATENT RIGHTS ARE RESERVED. UPON THE DEMAND OF USF, THIS DOCUMENT, ALONG WITH ALL COPIES AND EXTRACTS, AND ALL RELATED NOTES AND ANALYSES, MUST BE RETURNED TO USF OR DESTROYED, AS INSTRUCTED BY USF. ACCEPTANCE OF THE DELIVERY OF THIS DOCUMENT CONSTITUTES AGREEMENT TO THESE TERMS AND CONDITIONS.	DESIGNER	DATE	TITLE			
	AJA	10-8-01	ASC1000 GENERAL ASSEMBLY			
	CHECKER	DATE	CLIENT			
	ENGINEER	DATE				
	MANAGER	DATE	<div>USFilter</div> <div>USFILTER/WESTATES RED BLUFF, CA 1-800-795-2664</div>			
	FILE:					
	SCALE: NONE		PROJECT	DRAWING	SHEET	REV
		ASC1000SHEET1.DWG		1 OF 3		



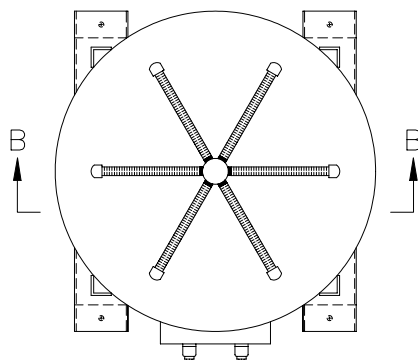
LIST OF COMPONENTS		
ITEM	QTY	DESCRIPTION
1	1	TANK ASSEMBLY
2	1	SKID ASSEMBLY
3	1	MANWAY ASSEMBLY, 18" DIA.
4	1	PLATE, I.D. & SERIAL NUMBER
5	1	BRONZE BALL VALVE, 3/4"
6	1	DECAL, "FOR WATER USE ONLY", 2 1/2" x 4 1/4"
7	2	DECAL, "AQUA-SCRUB", WHITE MYLAR
8	2	DECAL, "25 PSIG MAX", WHITE MYLAR
9	2	DECAL, "USFILTER/WESTATES" WHITE MYLAR W/BUE LETTERS

- NOTES:**
- DESIGN DATA:**
48" DIAMETER PRESSURE VESSEL-25 PSIG (MAX)
@ 120°F-NOT ASME CODE STAMPED FOR WATER USE ONLY
50 GPM
2000 LBS. ACTIVATED CARBON
 - MATERIAL:**
HEADS - SA 36-HR
SHELL - SA 36-HR
SKID - SA 36-HR
 - SURFACE PREPARATION:**
INTERIOR:
SANDBLAST: SSPC-SP-5 WHITE METAL
ABRASIVE: GARNET OR GRIT - PROFILE: 1.5-2 MILS
COATING: 3M BRAND SCOTCHKOTE 134
THICKNESS: 10-15 DFMT - COLOR: GREEN
EXTERIOR:
SANDBLAST: SSPC-SP-10 NEAR WHITE METAL
ABRASIVE: GARNET OR GRIT - PROFILE: 1.5-2 MILS
PRIMER COAT: RUST PREVENTATIVE EPOXY PRIMER (CARBOLINE 893)
THICKNESS: 4-6 DFMT - COLOR: RED
FINISH COAT: HIGH BUILD POLYURETHANE (CARBOLINE 134HG)
THICKNESS: 3-4 DFMT - COLOR: WHITE (FED. I.D.#17925)
 - LIFTING REQUIREMENTS:**
5200 LBS. MINIMUM RATING.
EST. WEIGHTS:
1190 LBS. - EMPTY VESSEL
3190 LBS. - WITH CARBON
7317 LBS. - OPERATING

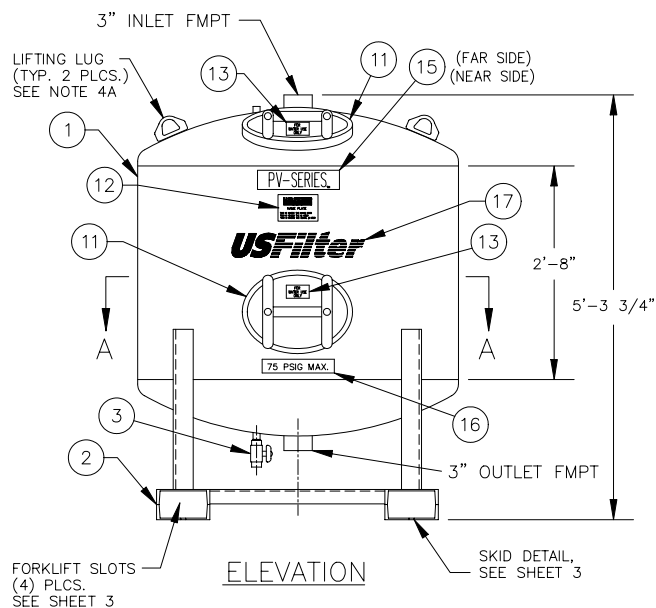
<div>COMPANY CONFIDENTIAL</div> <div>THIS DOCUMENT AND ALL INFORMATION CONTAINED HEREIN ARE THE PROPERTY OF THE USFILTER AND/OR ITS AFFILIATES ("USF"). THE DESIGN CONCEPTS AND INFORMATION CONTAINED HEREIN ARE PROPRIETARY TO USF AND ARE SUBMITTED IN CONFIDENCE. THEY ARE NOT TRANSFERABLE AND MUST BE USED ONLY FOR THE PURPOSE FOR WHICH THE DOCUMENT IS EXPRESSLY LOANED. THEY MUST NOT BE DISCLOSED, REPRODUCED, LOANED OR USED IN ANY OTHER MANNER WITHOUT THE EXPRESS WRITTEN CONSENT OF USF. IN NO EVENT SHALL THEY BE USED IN ANY MANNER DETRIMENTAL TO THE INTEREST OF USF. ALL PATENT RIGHTS ARE RESERVED. UPON THE DEMAND OF USF, THIS DOCUMENT, ALONG WITH ALL COPIES AND EXTRACTS, AND ALL RELATED NOTES AND ANALYSES, MUST BE RETURNED TO USF OR DESTROYED, AS INSTRUCTED BY USF. ACCEPTANCE OF THE DELIVERY OF THIS DOCUMENT CONSTITUTES AGREEMENT TO THESE TERMS AND CONDITIONS.</div>		DESIGNER	DATE	TITLE			
		AJA	10-8-01	ASC2000 GENERAL ASSEMBLY			
		CHECKER	DATE				
		ENGINEER	DATE	CLIENT			
		MANAGER	DATE	<div><div>USFILTER/WESTATES RED BLUFF, CA 1-800-795-2664</div></div>			
		FILE:					
		SCALE: NONE					
				PROJECT	DRAWING	SHEET	REV
				ASC2000SHEET1.DWG		1 OF 5	



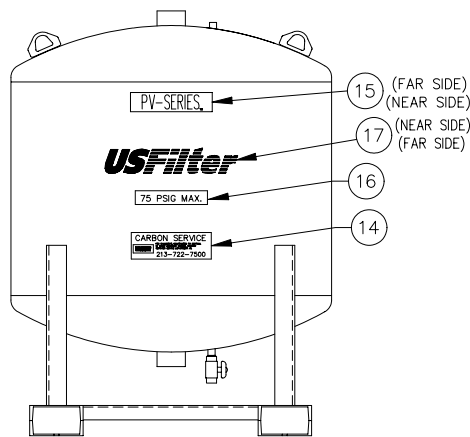
PLAN VIEW



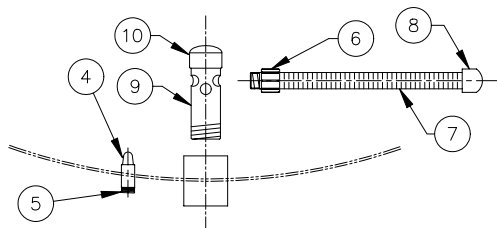
SECTION "A-A"



ELEVATION



REAR ELEVATION

ENLARGED SECTION VIEW B-B
UNDERDRAIN ASSEMBLY-(SEPARATED)

LIST OF COMPONENTS

ITEM	QTY	DESCRIPTION
1		TANK ASSEMBLY DWG. # PV1000SHEET2
2		SKID ASSEMBLY DWG. # PV1000SHEET3
3	1	BRONZE BALL VALVE, 3/4"
4	1	POLY SCREEN ORTHOS PART# N5 R-3/4", MPT
5	1	CLOSE NIPPLE, SCHD 40 304 SS, 3/4"
6	6	MALE ADAPTER, SCH 80 PVC, 1"
7	6	PIPE, SLOTTED SCH 80 PVC, 1" x 15" LG
8	6	CAP, SCH 80 PVC, SLIP, 1"
9	1	UNDERDRAIN HUB, 3" DIA x 10 1/2" LG, SCH 80 PVC
10	1	CAP, SCH 80 PVC, SLIP, 3"
11	2	MANWAY ASSEMBLY, 11" x 15"
12	1	PLATE, I.D. & SERIAL NUMBER
13	2	DECAL, "FOR WATER USE ONLY", 2 1/2" x 4 1/4"
14	1	DECAL, "CARBON SERVICE" WHITE MYLAR W/BUE LETTERS, 4" x 12"
15	2	DECAL, "PV-SERIES", WHITE MYLAR
16	2	DECAL, "75 PSIG MAX", WHITE MYLAR
17	2	DECAL, "USFILTER/WESTATES" WHITE MYLAR W/BUE LETTERS

NOTES:

- DESIGN DATA:**
48" DIAMETER PRESSURE VESSEL-75 PSIG(MAX)
@ 150°F-NOT ASME CODE STAMPED
FOR WATER USE ONLY
MAXIMUM FLOW RATE: 50 GPM
MAXIMUM CARBON CAPACITY: 1000 LBS. ACTIVATED CARBON
- MATERIAL:**
HEADS: STD. F & D NON CODE 3/16" THICKNESS C.S.
SHELL: 3/16" THK. 48" OD x 32" LONG C.S.
SKID: SA 36-HR
- SURFACE PREPARATION:**
INTERIOR:
SANDBLAST: SSPC-SP-5 WHITE METAL
ABRASIVE: GARNET OR GRIT - PROFILE: 1.5-2 MILS
COATING: 3M BRAND SCOTCHKOTE 134
THICKNESS: 10-15 DFMT - COLOR: GREEN
EXTERIOR:
SANDBLAST: SSPC-SP-10 NEAR WHITE METAL
ABRASIVE: GARNET OR GRIT - PROFILE: 1.5-2 MILS
PRIMER COAT: RUST PREVENTATIVE EPOXY PRIMER (CARBOLINE 893)
THICKNESS: 4-6 DFMT - COLOR: RED
FINISH COAT: HIGH BUILD POLYURETHANE (CARBOLINE 134HG)
THICKNESS: 3-4 DFMT - COLOR: BLUE (FED. I.D.#15052)
- LIFTING REQUIREMENTS:**
3,700 LBS. MINIMUM RATING.
EST. WEIGHTS:
910 LBS. - EMPTY VESSEL
1910 LBS. - WITH CARBON
4300 LBS. - OPERATING

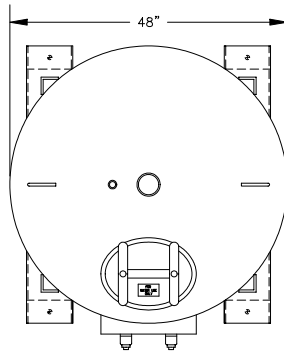
COMPANY CONFIDENTIAL

THIS DOCUMENT AND ALL INFORMATION CONTAINED HEREIN ARE THE PROPERTY OF THE USFILTER AND/OR ITS AFFILIATES ("USF"). THE DESIGN CONCEPTS AND INFORMATION CONTAINED HEREIN ARE PROPRIETARY TO USF AND ARE SUBMITTED IN CONFIDENCE. THEY ARE NOT TRANSFERABLE AND MUST BE USED ONLY FOR THE PURPOSE FOR WHICH THE DOCUMENT IS EXPRESSLY LOANED. THEY MUST NOT BE DISCLOSED, REPRODUCED, LOANED OR USED IN ANY OTHER MANNER WITHOUT THE EXPRESS WRITTEN CONSENT OF USF. IN NO EVENT SHALL THEY BE USED IN ANY MANNER DETRIMENTAL TO THE INTEREST OF USF. ALL PATENT RIGHTS ARE RESERVED. UPON THE DEMAND OF USF, THIS DOCUMENT, ALONG WITH ALL COPIES AND EXTRACTS, AND ALL RELATED NOTES AND ANALYSES, MUST BE RETURNED TO USF OR DESTROYED, AS INSTRUCTED BY USF. ACCEPTANCE OF THE DELIVERY OF THIS DOCUMENT CONSTITUTES AGREEMENT TO THESE TERMS AND CONDITIONS.

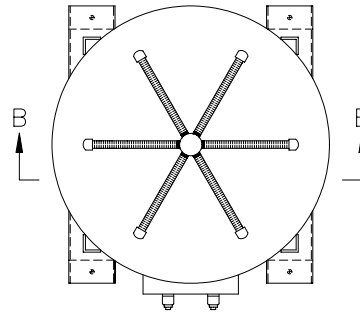
DESIGNER	DATE
AJA	9-11-01
CHECKER	DATE
ENGINEER	DATE
MANAGER	DATE
FILE:	
SCALE: NONE	

TITLE		PV1000 GENERAL ASSEMBLY	
CLIENT			
PROJECT		DRAWING PV1000SHEET1	
SHEET		1 OF 5	
REV			

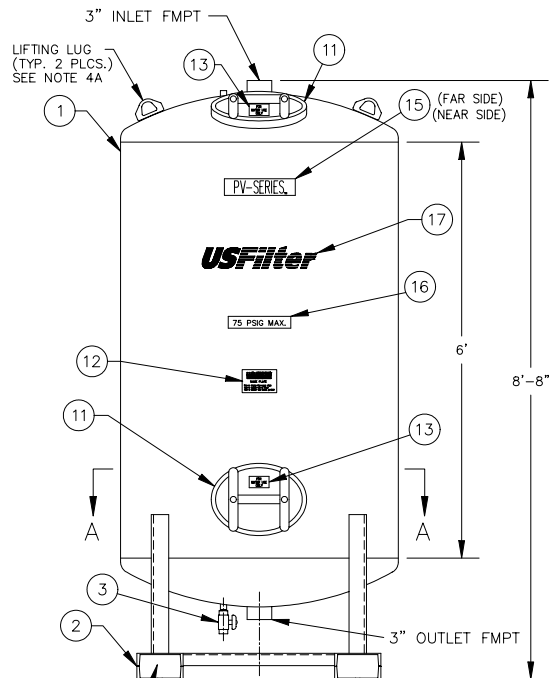
USFILTER/WESTATES
RED BLUFF, CA
1-800-795-2664



PLAN VIEW

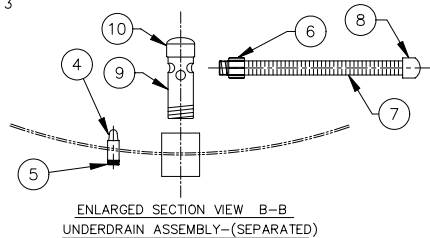


SECTION "A-A"

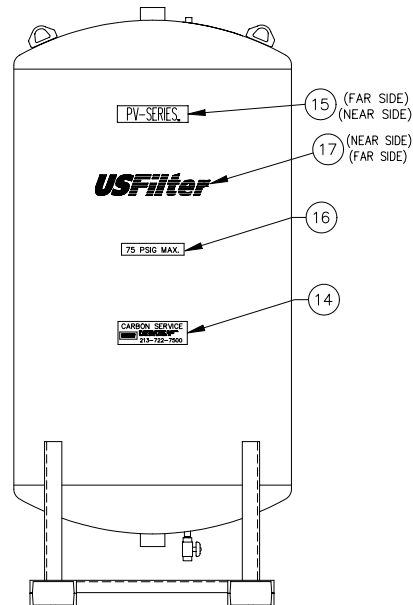


ELEVATION

FORKLIFT SLOTS
(4) PLCS.
SEE SHEET 3



ENLARGED SECTION VIEW B-B
UNDERDRAIN ASSEMBLY--(SEPARATED)



REAR ELEVATION

LIST OF COMPONENTS


ITEM	QTY	DESCRIPTION
1		TANK ASSEMBLY DWG. # PV2000SHEET2
2		SKID ASSEMBLY DWG. # PV2000SHEET3
3	1	BRONZE BALL VALVE, 3/4"
4	1	POLY SCREEN ORTHOS PART# N5 R-3/4", MPT
5	1	CLOSE NIPPLE, SCHD 40 304 SS, 3/4"
6	6	MALE ADAPTER, SCH 80 PVC, 1"
7	6	PIPE, SLOTTED SCH 80 PVC, 1" x 15" LG
8	6	CAP, SCH 80 PVC, SLIP, 1"
9	1	UNDERDRAIN HUB, 3" DIA x 10 1/2" LG, SCH 80 PVC
10	1	CAP, SCH 80 PVC, SLIP, 3"
11	2	MANWAY ASSEMBLY, 11" x 15"
12	1	PLATE, I.D. & SERIAL NUMBER
13	2	DECAL, "FOR WATER USE ONLY", 2 1/2" x 4 1/4"
14	1	DECAL, "CARBON SERVICE" WHITE MYLAR W/BUE LETTERS, 4" x 12"
15	2	DECAL, "PV-SERIES", WHITE MYLAR
16	2	DECAL, "75 PSIG MAX", WHITE MYLAR
17	2	DECAL, "USFILTER/WESTATES" WHITE MYLAR W/BUE LETTERS

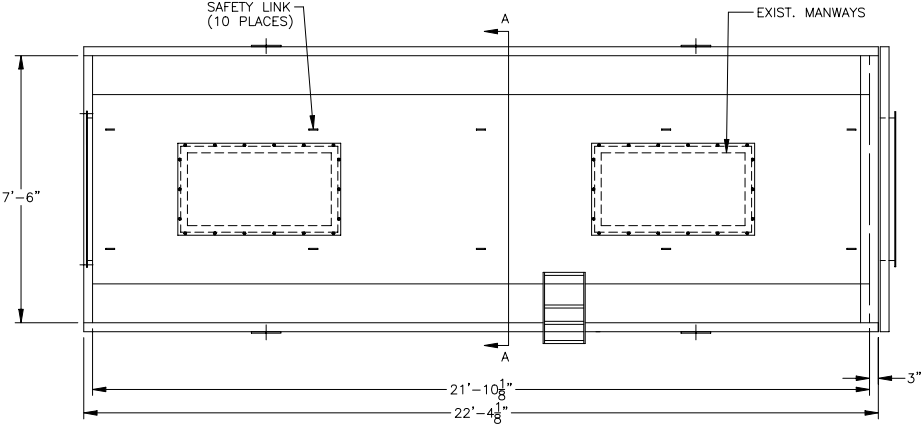
NOTES:

- DESIGN DATA:**
48" DIAMETER PRESSURE VESSEL-75 PSIG(MAX)
@ 150°F--NOT ASME CODE STAMPED
FOR WATER USE ONLY
MAXIMUM FLOW RATE: 100 GPM
MAXIMUM CARBON CAPACITY: 2000 LBS. ACTIVATED CARBON
- MATERIAL:**
HEADS: STD. F & D NON CODE 3/16" THICKNESS C.S.
SHELL: 3/16" THK. 48" OD x 72" LONG C.S.
SKID: SA 36-HR
- SURFACE PREPARATION:**
INTERIOR:
SANDBLAST: SSPC-SP-5 WHITE METAL
ABRASIVE: GARNET OR GRIT - PROFILE: 1.5-2 MILS
COATING: 3M BRAND SCOTCHKOTE 134
THICKNESS: 10-15 DFMT - COLOR: GREEN
EXTERIOR:
SANDBLAST: SSPC-SP-10 NEAR WHITE METAL
ABRASIVE: GARNET OR GRIT - PROFILE: 1.5-2 MILS
PRIMER COAT: RUST PREVENTATIVE EPOXY PRIMER (CARBOLINE 893)
THICKNESS: 4-6 DFMT - COLOR: RED
FINISH COAT: HIGH BUILD POLYURETHANE (CARBOLINE 134HG)
THICKNESS: 3-4 DFMT - COLOR: BLUE (FED. I.D.#15052)
- LIFTING REQUIREMENTS:**
5,200 LBS. MINIMUM RATING.
EST. WEIGHTS:
1190 LBS. - EMPTY VESSEL
3190 LBS. - WITH CARBON
7717 LBS. - OPERATING

COMPANY CONFIDENTIAL
THIS DOCUMENT AND ALL INFORMATION CONTAINED HEREIN ARE THE PROPERTY OF THE USFILTER AND/OR ITS AFFILIATES ("USF"). THE DESIGN CONCEPTS AND INFORMATION CONTAINED HEREIN ARE PROPRIETARY TO USF AND ARE SUBMITTED IN CONFIDENCE. THEY ARE NOT TRANSFERABLE AND MUST BE USED ONLY FOR THE PURPOSE FOR WHICH THE DOCUMENT IS EXPRESSLY LOANED. THEY MUST NOT BE DISCLOSED, REPRODUCED, LOANED OR USED IN ANY OTHER MANNER WITHOUT THE EXPRESS WRITTEN CONSENT OF USF. IN NO EVENT SHALL THEY BE USED IN ANY MANNER DETRIMENTAL TO THE INTEREST OF USF. ALL PATENT RIGHTS ARE RESERVED. UPON THE DEMAND OF USF, THIS DOCUMENT, ALONG WITH ALL COPIES AND EXTRACTS, MUST BE RETURNED TO USF OR DESTROYED, AS INSTRUCTED BY USF. ACCEPTANCE OF THE DELIVERY OF THIS DOCUMENT CONSTITUTES AGREEMENT TO THESE TERMS AND CONDITIONS.

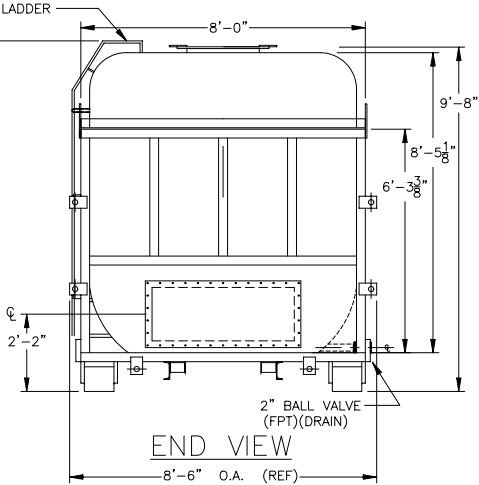
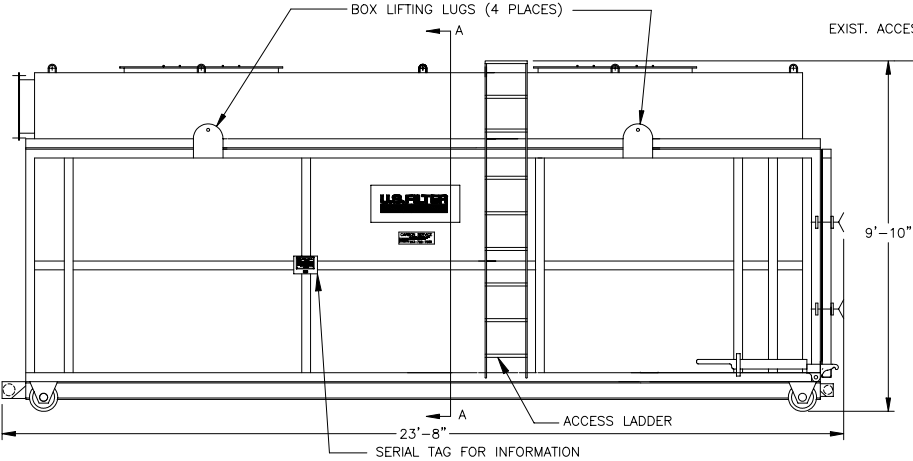
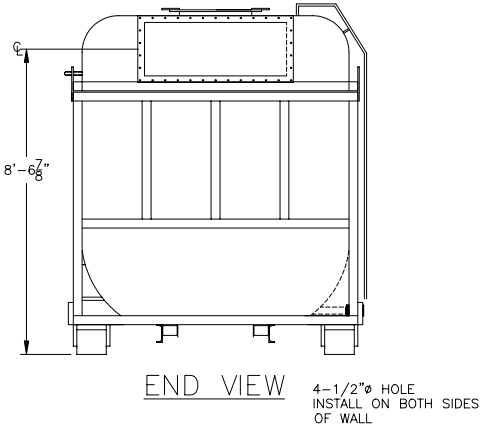
DESIGNER	DATE
AJA	9-11-01
CHECKER	DATE
ENGINEER	DATE
MANAGER	DATE
FILE:	
SCALE: NONE	

TITLE		PV2000 GENERAL ASSEMBLY		
CLIENT				
		 USFILTER/WESTATES RED BLUFF, CA 1-800-795-2664		
PROJECT	DRAWING	SHEET	REV	
	PV2000SHEET1	1 OF 5		




NOTES:

- 1. DESIGN DATA:
14 INCHES W.G.
- 2. MATERIAL:
CARBON STEEL
- 3. SURFACE PREPARATION:
(A) PRIMER: (2) PART EPOXY PRIMER
(B) FINISH: POLYURETHANE, BLUE
- 4. APPROXIMATE WEIGHTS:
EMPTY: (NO CARBON)
ROOF:..... 1,400 LBS
BOX:..... 8,100 LBS
TOTAL:..... 9,500 LBS

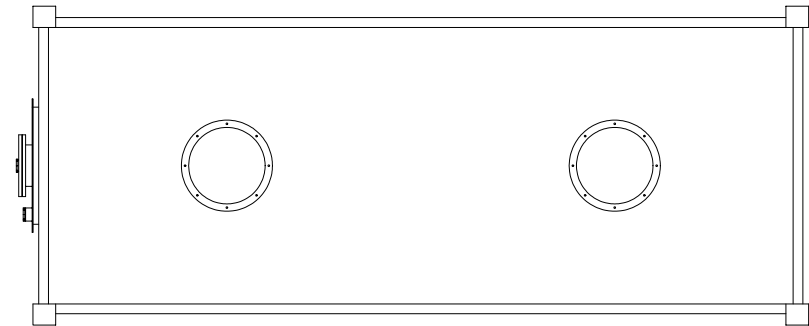


ELEVATION VIEWS

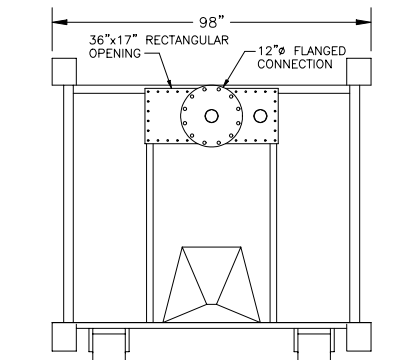
COMPANY CONFIDENTIAL THIS DOCUMENT AND ALL INFORMATION CONTAINED HEREIN ARE THE PROPERTY OF THE USFILTER AND/OR ITS AFFILIATES ("USF"). THE DESIGN CONCEPTS AND INFORMATION CONTAINED HEREIN ARE PROPRIETARY TO USF AND ARE SUBMITTED IN CONFIDENCE. THEY ARE NOT TRANSFERABLE AND MUST BE USED ONLY FOR THE PURPOSE FOR WHICH THE DOCUMENT IS EXPRESSLY LOANED. THEY MUST NOT BE DISCLOSED, REPRODUCED, LOANED OR USED IN ANY OTHER MANNER WITHOUT THE EXPRESS WRITTEN CONSENT OF USF. IN NO EVENT SHALL THEY BE USED IN ANY MANNER DETRIMENTAL TO THE INTEREST OF USF. ALL PATENT RIGHTS ARE RESERVED. UPON THE DEMAND OF USF, THIS DOCUMENT, ALONG WITH ALL COPIES AND EXTRACTS, AND ALL RELATED NOTES AND ANALYSES, MUST BE RETURNED TO USF OR DESTROYED, AS INSTRUCTED BY USF. ACCEPTANCE OF THE DELIVERY OF THIS DOCUMENT CONSTITUTES AGREEMENT TO THESE TERMS AND CONDITIONS.	DESIGNER LLR	DATE 5-21-01	TITLE RB20 GENERAL ASSEMBLY	
	CHECKER	DATE	CLIENT	
	ENGINEER	DATE		
	MANAGER	DATE		
	FILE:		 USFILTER/WESTATES RED BLUFF, CA 1-800-795-2664	
SCALE: NONE			PROJECT	REV
			DRAWING RB20 OS A SIZE.DWG	SHEET 1 OF 1

NOTES:

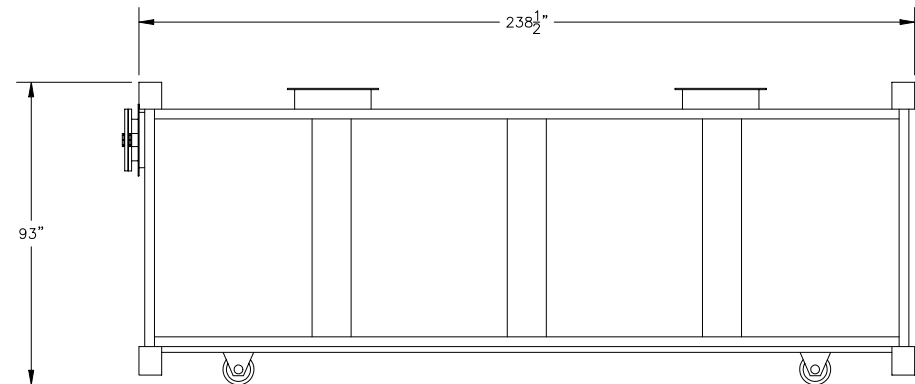
1. CARBON CAPACITY 12000 LB
2. FLOW RATE 8000CFM MAX.
3. MAX. PRESSURE 28 " W.C. / 2" W.C. VACUUM
4. EMPTY WEIGHT 9500 LB.
5. INLET/ OUT LET 12"X36".
6. MAX TEMPERATURE 140°F



TOP VIEW



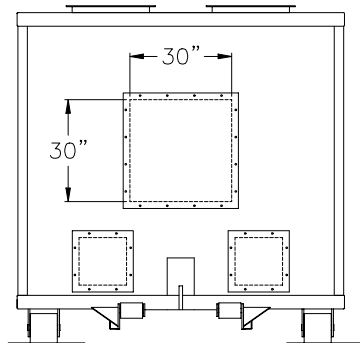
END VIEW



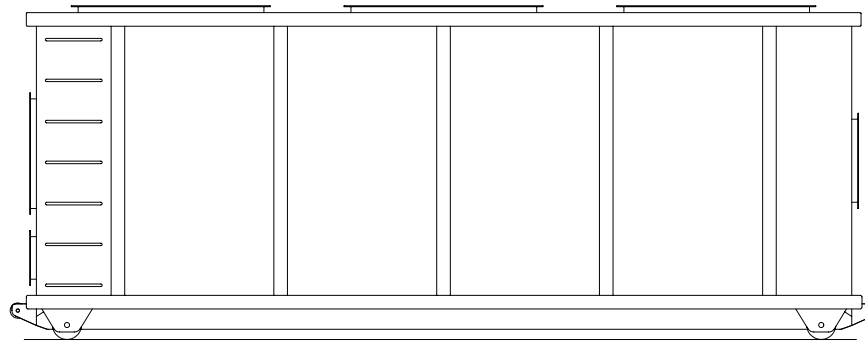
SIDE VIEW

<div>COMPANY CONFIDENTIAL</div> <div>THIS DOCUMENT AND ALL INFORMATION CONTAINED HEREIN ARE THE PROPERTY OF THE USFILTER AND/OR ITS AFFILIATES ("USF"). THE DESIGN CONCEPTS AND INFORMATION CONTAINED HEREIN ARE PROPRIETARY TO USF AND ARE SUBMITTED IN CONFIDENCE. THEY ARE NOT TRANSFERABLE AND MUST BE USED ONLY FOR THE PURPOSE FOR WHICH THE DOCUMENT IS EXPRESSLY LOANED. THEY MUST NOT BE DISCLOSED, REPRODUCED, LOANED OR USED IN ANY OTHER MANNER WITHOUT THE EXPRESS WRITTEN CONSENT OF USF. IN NO EVENT SHALL THEY BE USED IN ANY MANNER DETRIMENTAL TO THE INTEREST OF USF. ALL PATENT RIGHTS ARE RESERVED. UPON THE DEMAND OF USF, THIS DOCUMENT, ALONG WITH ALL COPIES AND EXTRACTS, AND ALL RELATED NOTES AND ANALYSES, MUST BE RETURNED TO USF OR DESTROYED, AS INSTRUCTED BY USF. ACCEPTANCE OF THE DELIVERY OF THIS DOCUMENT CONSTITUTES AGREEMENT TO THESE TERMS AND CONDITIONS.</div>	DESIGNER	DATE	TITLE RB10 OS GENERAL ASSEMBLY			
	LLR	5-9-01				
	CHECKER	DATE				
	ENGINEER	DATE	CLIENT			
	MANAGER	DATE	<div><div>USFilter</div><div>USFILTER/WESTATES RED BLUFF, CA 1-800-795-2664</div></div>			
	FILE:					
	SCALE: NONE	PROJECT	DRAWING	SHEET	REV	
		RB10 OSGENASSY	OF			

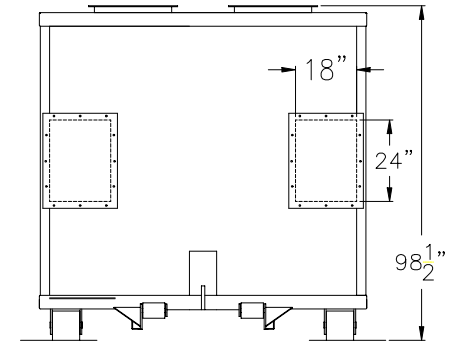
RB12HV



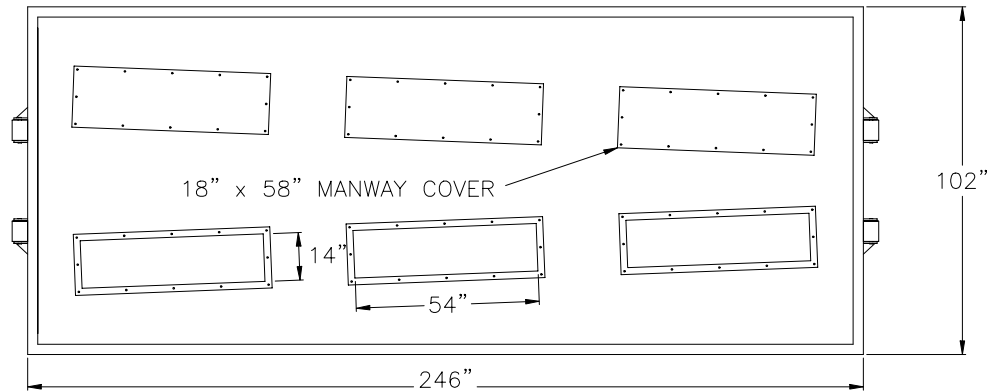
LEFT END VIEW



SIDE VIEW



RIGHT END VIEW



PLAN VIEW

SPECIFICATIONS:

1. 20,000 SCFM MAX FLOW RATE
2. 12,000 LBS ACTIVATED CARBON
3. 30" X 30" INLET, 2-18" X 24" OUTLETS.
4. PRIMED AND PAINTED
5. RIBBED CARBON STEEL CONSTRUCTION
6. 8" GROUND ROLLERS FOR HANDLING EASE
7. 18" x 58" MANWAYS
8. BOXES TO BE GROUNDED BY BRAIDED COPPER #4
9. SHIPPING WEIGHT (WITH CARBON) APPROX.= 22,000 LB
10. PROVIDE SAMPLE PORTS 1/2" BALL VALVE WITH HOSE FITTING.

COMPANY CONFIDENTIAL

THIS DOCUMENT AND ALL INFORMATION CONTAINED HEREIN ARE THE PROPERTY OF THE USFILTER AND/OR ITS AFFILIATES ("USF"). THE DESIGN CONCEPTS AND INFORMATION CONTAINED HEREIN ARE PROPRIETARY TO USF AND ARE SUBMITTED IN CONFIDENCE. THEY ARE NOT TRANSFERABLE AND MUST BE USED ONLY FOR THE PURPOSE FOR WHICH THE DOCUMENT IS EXPRESSLY LOANED. THEY MUST NOT BE DISCLOSED, REPRODUCED, LOANED OR USED IN ANY OTHER MANNER WITHOUT THE EXPRESS WRITTEN CONSENT OF USF. IN NO EVENT SHALL THEY BE USED IN ANY MANNER DETRIMENTAL TO THE INTEREST OF USF. ALL PATENT RIGHTS ARE RESERVED. UPON THE DEMAND OF USF, THIS DOCUMENT, ALONG WITH ALL COPIES AND EXTRACTS, AND ALL RELATED NOTES AND ANALYSES, MUST BE RETURNED TO USF OR DESTROYED, AS INSTRUCTED BY USF. ACCEPTANCE OF THE DELIVERY OF THIS DOCUMENT CONSTITUTES AGREEMENT TO THESE TERMS AND CONDITIONS.

DESIGNER	DATE
LLR	4-8-01
CHECKER	DATE
ENGINEER	DATE
MANAGER	DATE
FILE:	
SCALE: NONE	

TITLE RB12HV GENERAL ASSEMBLY

CLIENT

USFilter

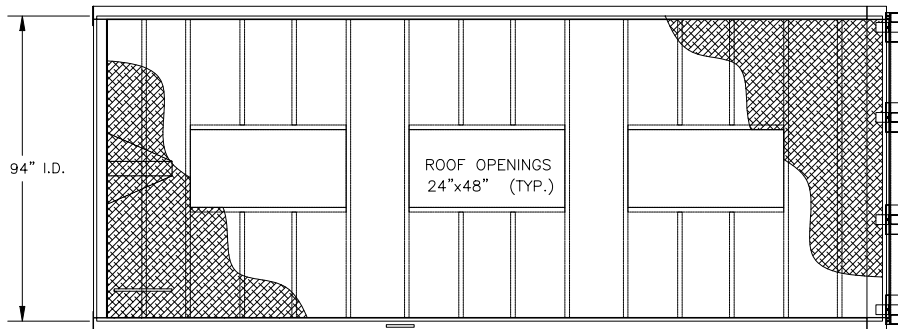
 USFILTER/WESTATES
 RED BLUFF, CA
 1-800-795-2664

PROJECT

 DRAWING
 RB12HVGENASSY

 SHEET
 OF

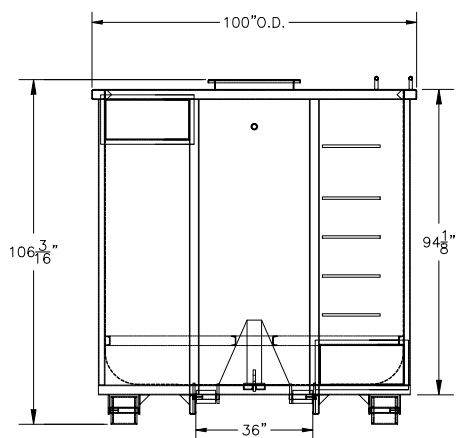
REV



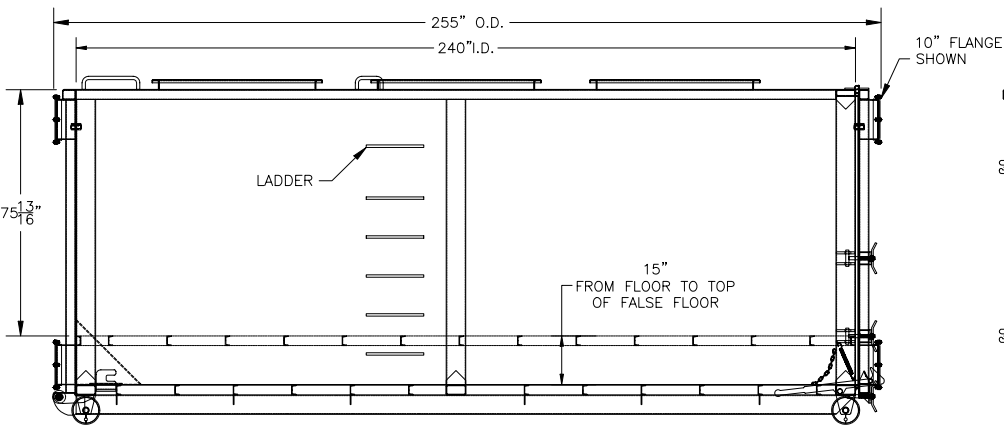
PLAN VIEW

NOTES :

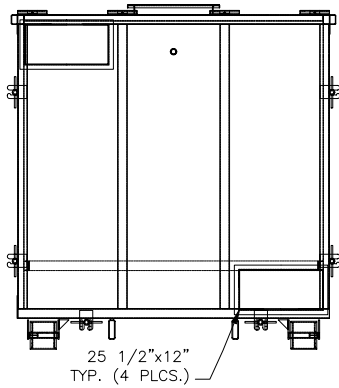
1. CONTINUOUS WELDED CONSTRUCTION.
2. EPOXY PRIMED INTERIOR AND EXTERIOR PRIMED AND FINISHED WITH POLYURETHANE.
3. TOP HINGED TAILGATE.
4. VESSEL WEIGHT: 10,500 LBS.
5. VESSEL WEIGHT W/ CARBON: 30,500 LBS.
7. FLOWRATE 12,000 CFM MAX.



FRONT VIEW



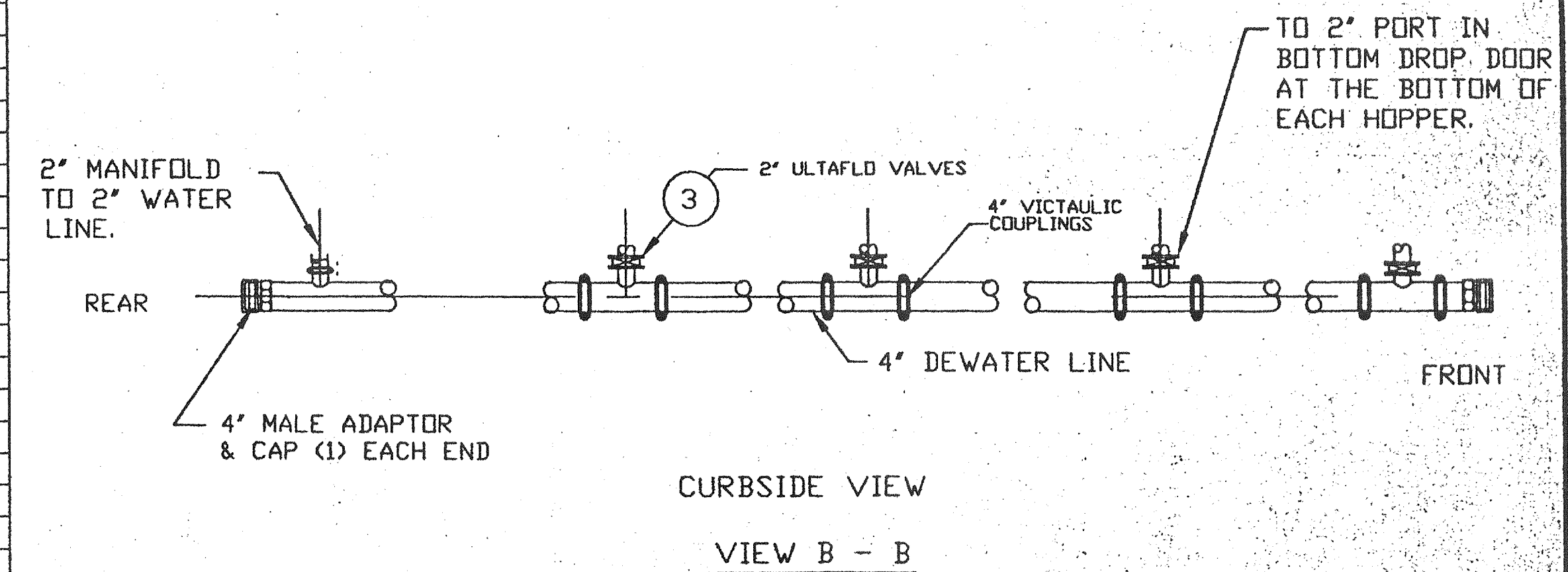
SIDE VIEW



REAR VIEW

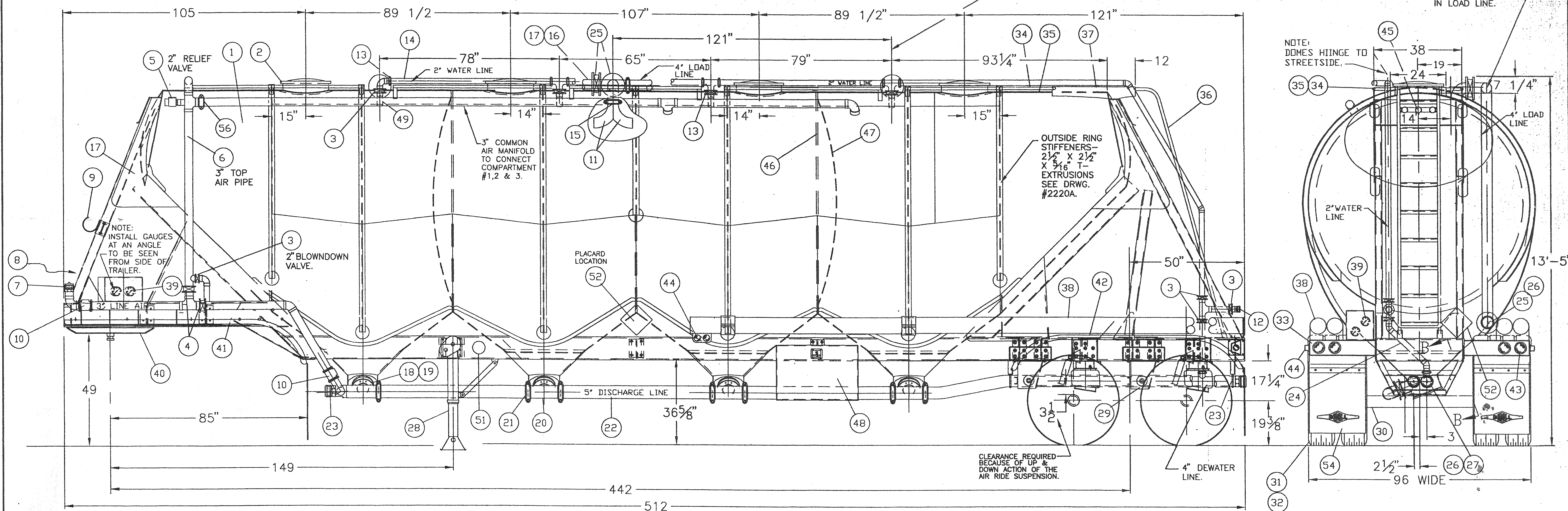
<p>COMPANY CONFIDENTIAL</p> <p>THIS DOCUMENT AND ALL INFORMATION CONTAINED HEREIN ARE THE PROPERTY OF THE USFILTER AND/OR ITS AFFILIATES ("USF"). THE DESIGN CONCEPTS AND INFORMATION CONTAINED HEREIN ARE PROPRIETARY TO USF AND ARE SUBMITTED IN CONFIDENCE. THEY ARE NOT TRANSFERABLE AND MUST BE USED ONLY FOR THE PURPOSE FOR WHICH THE DOCUMENT IS EXPRESSLY LOANED. THEY MUST NOT BE DISCLOSED, REPRODUCED, LOANED OR USED IN ANY OTHER MANNER WITHOUT THE EXPRESS WRITTEN CONSENT OF USF. IN NO EVENT SHALL THEY BE USED IN ANY MANNER DETRIMENTAL TO THE INTEREST OF USF. ALL PATENT RIGHTS ARE RESERVED. UPON THE DEMAND OF USF, THIS DOCUMENT, ALONG WITH ALL COPIES AND EXTRACTS, AND ALL RELATED NOTES AND ANALYSES, MUST BE RETURNED TO USF OR DESTROYED, AS INSTRUCTED BY USF. ACCEPTANCE OF THE DELIVERY OF THIS DOCUMENT CONSTITUTES AGREEMENT TO THESE TERMS AND CONDITIONS.</p>	DESIGNER	DATE	TITLE			
	ESP	4-9-01	RB20 GENERAL ASSEMBLY			
	CHECKER	DATE	CLIENT			
	LLR	4-9-01				
	ENGINEER	DATE	<div>USFilter</div> <div>USFILTER/WESTATES RED BLUFF, CA 1-800-795-2664</div>			
	MANAGER	DATE				
	FILE:					
	SCALE: NONE		PROJECT	DRAWING	SHEET	REV
			RB20	8X11	OF	

ITEM	QTY	DESCRIPTION	ITEM	QTY	DESCRIPTION	ITEM	QTY	DESCRIPTION
1	1	BODY & FRAME SEE DRG. #2220A (BODY MAT-188/203)	24	1	2" MANIFOLD ALUM. PIPE SEE DRWG. #2220C	43	4	TRUCK LITE STOP/TAI/TURN RED LIGHTS
2	4	KNAPPCO LM20 DOMES W/ BUNA-N GASKETS - HINGE TO	25	4	4" ULTRAFLO VALVES-MODEL 400 W/ NITRILE SEATS	44	6	TRUCK LITE MARKER LIGHTS (2) RED & (4) AMBER
-	-	STREETSIDE	26	4	4" MALE ADAPTORS & CAPS ON END OF 4" LOAD LINE &	45	1	TRUCK LITE I. D. CLUSTER
3	11	2" ULTRAFLO VALVES- (7) IN WATER LINE & (4) IN DEWATER			4" DEWATER LINE	46	3	INTERNAL RINGS - 3" X 3/8" FLAT BARS ON EDGE.
-	-	LINE.- MODEL 400 W/ NITRILE SEATS	27	1	4" ALUM. SCH. 40 PIPE DEWATER LINE SEE VIEW B - B			BARS ARE PERPENDICULAR TO SHELL
4	2	3" ULTRAFLO VALVES- MODEL 400 W/NITRILE SEATS	28	1	LANDING GEAR- 2 SPEED-S/S CRANK #LPR-30-444	47	2	SANITARY BULKHEADS- 0.250" ALUM.
5	1	2" BAYCO PRESSURE RELIEF VALVE SET AR 15 P.S.I	29	2	SUSPENSION- HENDRICKSON-TURNER HT-230-17-004	48	1	TOOL BOX- 24" H. X 36" L X 24" DP. - STREETSIDE
6	1	3" ALUM. TOP AIR PIPE			17" RIDE HT.			SEE DRWG. #2220B
7	1	3" COUPLER & PLUG STREETSIDE	30	2	AXLES- DANA 5" RD.- 1/2" WALL- 71 1/2" TRACK	49	4	2" N.P.T. NIPPLES INSIDE TANK -EXTEND INTO TANK
8	1	3" MALE ADAPTOR DUMMY CURBSIDE			W/CHICAGO RAWHIDE OIL SEALS			3 TO 4"
9	1	HOSE HOOK- ADJUSTABLE			5 1/2" GUNITE AUTOMATIC SLACKS	50	1	ROCKWELL WABCO 4S/2M ABS KIT W/ STOP LIGHT CONTROL.
10	2	3" KNAPPCO SWING CHECK VALVES			4 OUTBOARD CENTRIFUSE DRUMS- ALUM. HUBS	51	1	BETTS PS-1 DOCUMENT HOLDER
11	2	4" STL. STEEL LONG RADIUS WELD 90° ELBOWS			4 30/30 COMBO MGM BRAKE CHAMBERS	52	4	PLACARD HOLDERS- SLIDE IN STYLE- LOCATE (1) EACH END
12	1	2" MALE ADAPTOR & CAP AT END OF 2" WATER LINE	31	8	WHEELS- ALCOA ALUM.- 8.25 X 24.5			AND (1) EACH SIDE AT CENTER.
13	8	2" VICTAULIC COUPLINGS W/ BUNA-N GASKETS	32	8	TIRES- 285/75R24.5 BRIDGESTONE R-194	53	1	WIRING HARNESS KIT W/ 7-WAY RECEPTACLE USA #602001
14	-	2" SCH. 40 ALUM. PIPE WATER LINE	33	2	ALUM. LIGHT HOUSINGS PER STD.- 605	54	4	BEALL MUD FLAPS
15	14	4" VICTAULIC COUPLINGS W/ BUNA-N GASKETS	34	2	TOE RAILS W/ 1" ALUM. PIPE FULL LENGTH	55	-	PAINT STEEL PARTS WHEELABRATOR BLUE PAINTONE MATCHING
16	-	4" SCH. 40 ALUM. PIPE	35	-	NON-SLIP PAINT BETWEEN TOE RAILS FULL LENGTH			SYSTEM #286,C 100,M 60, K 6
17	1	4" TOP LOAD LINE TO ENTER EACH OF 3-COMPTS. AT	36	1	ALUM. LADDER W/ 1" PIPE & 4 3/4" GRIP STRUT STEPS	56	1	3" VICTAULIC COUPLING W/ BUNA-N GASKETS
		TOP CURBSIDE (SEE DRWG. #2220C)	37	1	GRIPSTRUT PLATFORM 24" WIDE X 36" LG. USE (2)			
18	4	12" BOTTOM DROP ASSY. SEE DRWG. #2220D			11 3/4" WIDE GRIPSTRUT PIECES			
19	4	5" ULTRAFLO VALVES W/NITRILE SEATS	38	4	HOSE TUBE- 7" X 20'-0", 2 EA. SIDE-DOORS EA. END			
20	4	5" X 5" PENTRON TEES W/OUT DOORS - W/ VIC. ENDS	39	4	AIR PRESSURE GAUGES (2) 1N (2) ALUM. BOXES W/ LIGHT-			
21	7	5" VICTAULIC COUPLERS W/ BUNA-N GASKETS			3 1/2" DIA. LIQUID FILLED. 0 TO 30 P.S.I.(TANK & LINE)			
22	-	5" SCH 40 DISCHARGE PIPE TO REAR UNDER AXLE	40	1	KINGPIN PLATE PER STD.- 419			
23	2	5" X 4" REDUCERS W/ (2) 4" MALE ADAPTORS & CAPS	41	2	ALUM. FRONT FENDERS W/ RADIUS			
		(1) EACH FRONT AND REAR ON DISCHARGE LINE.	42	2	ALUM. TANDEM FENDERS			



NOTE:
FRONT & REAR 4" LOAD LINE INLETS ARE
LOCATED ON THE SAME CENTERLINES
AS THE FRONT & REAR 2" WATER LINE INLETS
SEE DRWG. #2220C.

NOTE:
USE 4" ALUM. SCH.
40 WELD S.R. WELD
ELBOWS & TEES
IN LOAD LINE.



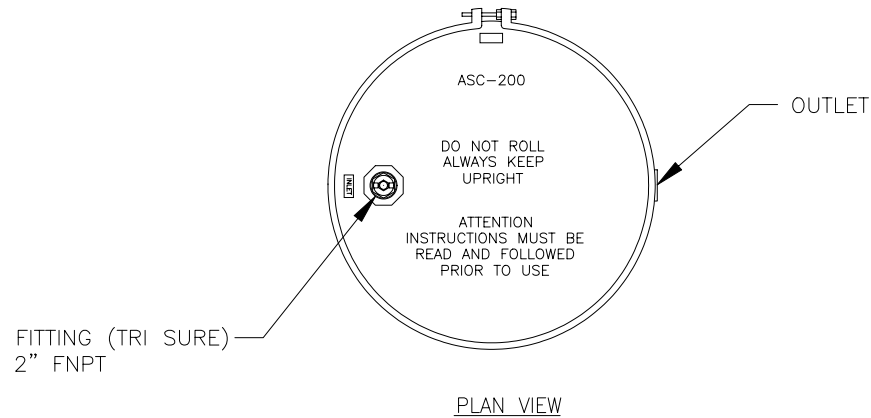
125' MAXIMUM TEMPERATURE

BY: _____
DATE: _____
CUSTOMER APPROVAL

NOTE:
GRIND ALL INTERIOR BUTT
WELDS SMOOTH IN PREPARATION
FOR A LINER.

- (50) ABS KIT
- (53) WIRING HARNESS KIT
- (55) PAINT

DOT SPECIFICATION: N/A		SERIAL NUMBER: PS27472 & PS27473		Beall Trailers of Oregon, Inc. <small>THIS DOCUMENT CONTAINS PROPRIETARY INFORMATION BELONGING TO BEALL TRAILERS, INC. AND SUCH INFORMATION MAY NOT BE DISCLOSED TO OTHERS, REPRODUCED, COPIED OR USED WITHOUT WRITTEN AUTHORITY FROM BEALL TRAILERS, INC.</small>	
WHEELABRATOR CLEAN AIR SYSTEMS F.O. #27472 & 27473-95		SCALE 1:20		DRAWN BY: LA APPROVED BY: BVI	
TITLE 1800 CU. FT. ALUMINUM PNEUMATIC SEMI		REFERENCE		DATE 10-25-95	
THRU CHANGE ORDER #2		LA		DRAWING NUMBER 2220	
DATE	SYM	REVISION RECORD		BY	

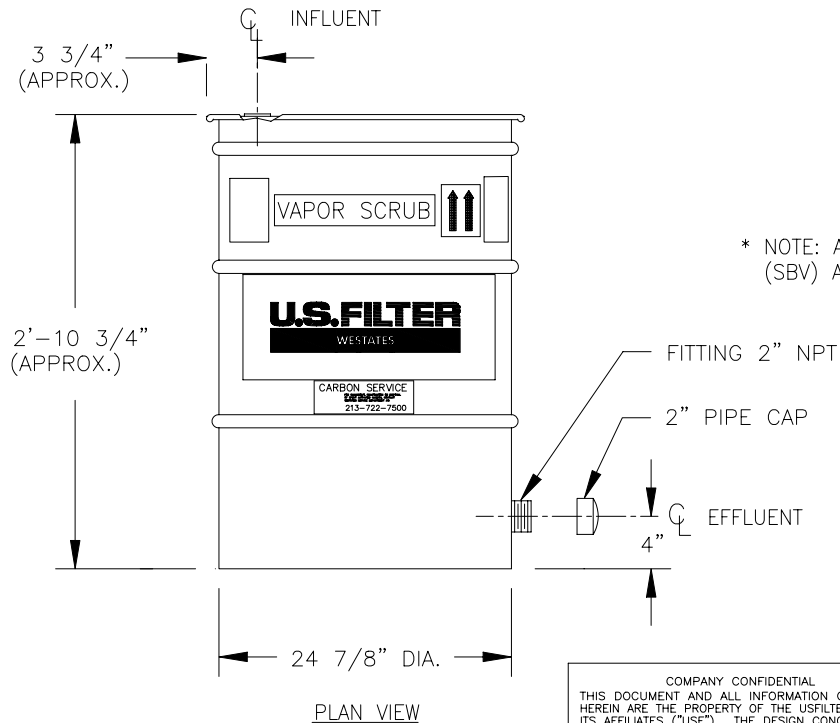
NOTES:

1. CARBON:
AS REQUIRED.
2. MATERIALS OF CONSTRUCTION:
VESSEL:CARBON STEEL
EXTERNAL COATING:HIGH GLOSS PAINT, WESTATES BLUE
INTERNAL COATING:CURED EPOXY
INTERNAL DISTRIBUTION:PVC

3. SPECIFICATIONS:

FLOW * - CFM (MAX): 100
 PRESSURE - PSIG (MAX): 10
 TEMPERATURE - DEG F (MAX): 140
 CARBON FILL VOLUME - CU FT: 6.9
 CROSS SECTION - SQ FT: 2.8
 SHIPPING WEIGHT - LBS: (APPROX,) 250
 OPERATING WEIGHT - LBS: (APPROX,) 500

* NOTE: ACTUAL DESIGN SHOULD BE BASED ON SUPERFICIAL BED VELOCITY (SBV) AS REQUIRED FOR SPECIFIC CONTAMINANTS.



COMPANY CONFIDENTIAL
 THIS DOCUMENT AND ALL INFORMATION CONTAINED HEREIN ARE THE PROPERTY OF THE USFILTER AND/OR ITS AFFILIATES ("USF"). THE DESIGN CONCEPTS AND INFORMATION CONTAINED HEREIN ARE PROPRIETARY TO USF AND ARE SUBMITTED IN CONFIDENCE. THEY ARE NOT TRANSFERABLE AND MUST BE USED ONLY FOR THE PURPOSE FOR WHICH THE DOCUMENT IS EXPRESSLY LOANED. THEY MUST NOT BE DISCLOSED, REPRODUCED, LOANED OR USED IN ANY OTHER MANNER WITHOUT THE EXPRESS WRITTEN CONSENT OF USF. IN NO EVENT SHALL THEY BE USED IN ANY MANNER DETRIMENTAL TO THE INTEREST OF USF. ALL PATENT RIGHTS ARE RESERVED. UPON THE DEMAND OF USF, THIS DOCUMENT, ALONG WITH ALL COPIES AND EXTRACTS, AND ALL RELATED NOTES AND ANALYSES, MUST BE RETURNED TO USF OR DESTROYED, AS INSTRUCTED BY USF. ACCEPTANCE OF THE DELIVERY OF THIS DOCUMENT CONSTITUTES AGREEMENT TO THESE TERMS AND CONDITIONS.

DESIGNER
LLR

DATE
4-8-01

CHECKER
DATE

ENGINEER
DATE

MANAGER
DATE

FILE:
SCALE: NONE

TITLE VSC200 GENERAL ASSEMBLY

CLIENT TBD

USFilter

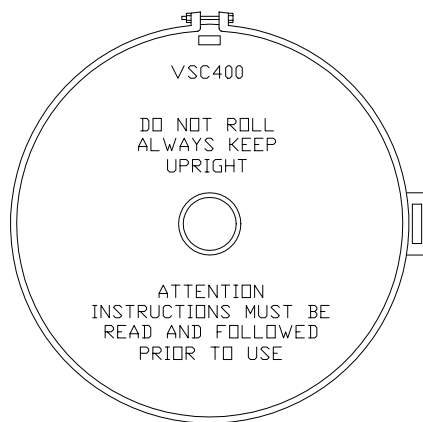
USFILTER/WESTATES
RED BLUFF, CA
1-800-795-2664

PROJECT

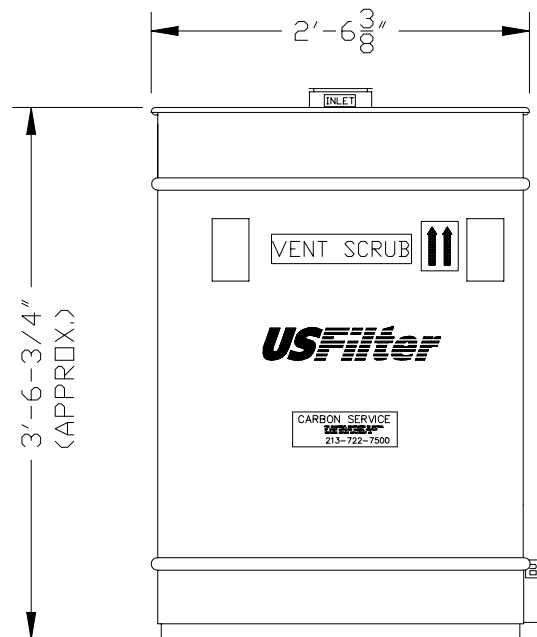
DRAWING
VSC200GENASSY

SHEET
OF

REV



PLAN




ELEVATION

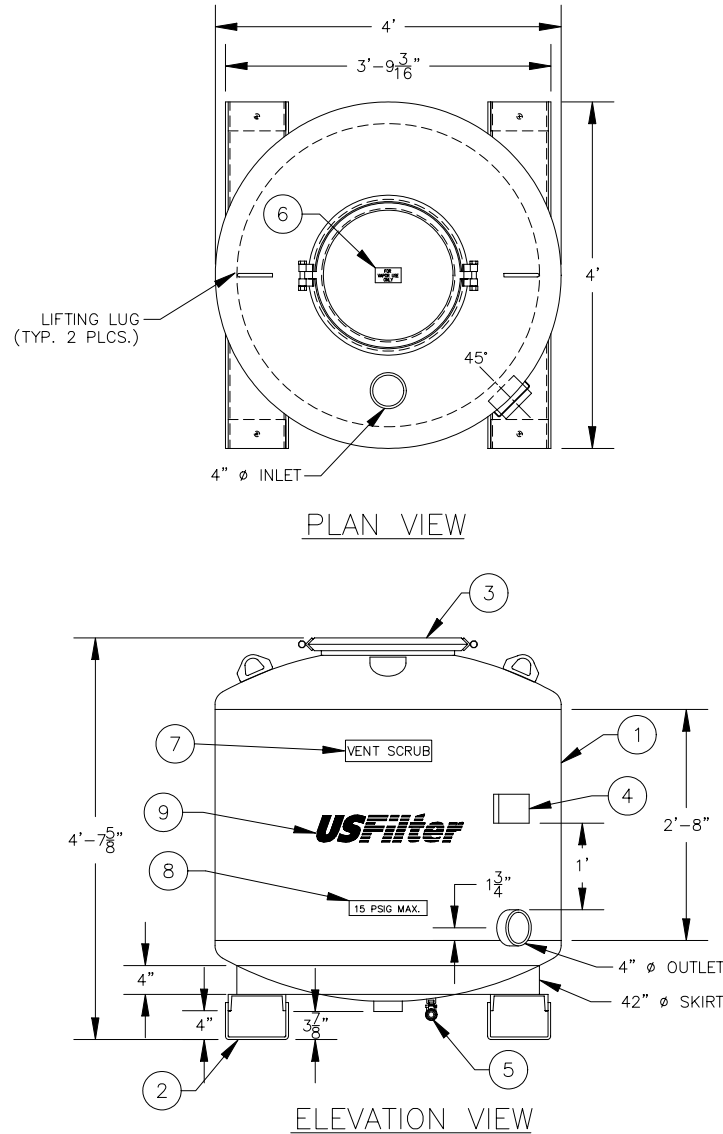
NOTES:

1. CARBON:
AS REQUIRED.
2. MATERIALS OF CONSTRUCTION:
VESSEL:CARBON STEEL
EXTERNAL COATING:HIGH GLOSS PAINT, WESTATES BLUE
INTERNAL COATING:CURED EPOXY
INTERNAL DISTRIBUTION:PVC
3. SPECIFICATIONS:
FLOW * - CFM (MAX): 300
PRESSURE - PSIG (MAX): 6
TEMPERATURE - DEG F (MAX): 140
CARBON FILL VOLUME - CU FT: 14.0
CROSS SECTION - SQ FT: 4.9
SHIPPING WEIGHT - LBS: (APPROX,) 480
OPERATING WEIGHT - LBS: (APPROX,) 480

* NOTE: ACTUAL DESIGN SHOULD BE BASED ON SUPERFICIAL BED VELOCITY (SBV) AS REQUIRED FOR SPECIFIC CONTAMINANTS.

COMPANY CONFIDENTIAL
THIS DOCUMENT AND ALL INFORMATION CONTAINED HEREIN ARE THE PROPERTY OF THE USFILTER AND/OR ITS AFFILIATES ("USF"). THE DESIGN CONCEPTS AND INFORMATION CONTAINED HEREIN ARE PROPRIETARY TO USF AND ARE SUBMITTED IN CONFIDENCE. THEY ARE NOT TRANSFERABLE AND MUST BE USED ONLY FOR THE PURPOSE FOR WHICH THE DOCUMENT IS EXPRESSLY LOANED. THEY MUST NOT BE DISCLOSED, REPRODUCED, LOANED OR USED IN ANY OTHER MANNER WITHOUT THE EXPRESS WRITTEN CONSENT OF USF. IN NO EVENT SHALL THEY BE USED IN ANY MANNER DETRIMENTAL TO THE INTEREST OF USF. ALL PATENT RIGHTS ARE RESERVED. UPON THE DEMAND OF USF, THIS DOCUMENT, ALONG WITH ALL COPIES AND EXTRACTS, AND ALL RELATED NOTES AND ANALYSES, MUST BE RETURNED TO USF OR DESTROYED, AS INSTRUCTED BY USF. ACCEPTANCE OF THE DELIVERY OF THIS DOCUMENT CONSTITUTES AGREEMENT TO THESE TERMS AND CONDITIONS.

DESIGNER AJA	DATE 5-2-01	TITLE VSC400 GENERAL ASSEMBLY	
CHECKER	DATE	CLIENT	
ENGINEER	DATE		
MANAGER	DATE		
FILE:		 USFILTER/WESTATES RED BLUFF, CA 1-800-795-2664	
SCALE:			
PROJECT		DRAWING VSC400.DWG	SHEET 1 OF 1
			REV



LIST OF COMPONENTS

ITEM	QTY	DESCRIPTION
1	1	TANK ASSEMBLY
2	1	SKID ASSEMBLY
3	1	MANWAY ASSEMBLY, 18" DIA.
4	1	PLATE, I.D. & SERIAL NUMBER
5	1	BRONZE BALL VALVE, 3/4"
6	1	DECAL, "FOR VAPOR USE ONLY", 2 1/2" x 4 1/4"
7	2	DECAL, "VENT-SCRUB", WHITE MYLAR
8	2	DECAL, "15 PSIG MAX", WHITE MYLAR
9	2	DECAL, "USFILTER/WESTATES" WHITE MYLAR W/BUE LETTERS

NOTES:

- DESIGN DATA:**
48" DIAMETER PRESSURE VESSEL-15 PSIG(MAX)
VACUUM RATING - 15" HG
@ 120°F-NOT ASME CODE STAMPED FOR VAPOR USE ONLY
600 CFM
1000 LBS. ACTIVATED CARBON
- MATERIAL:**
HEADS - SA 36-HR
SHELL - SA 36-HR
SKID - SA 36-HR
- SURFACE PREPARATION:**
INTERIOR:
SANDBLAST: SSPC-SP-5 WHITE METAL
ABRASIVE: GARNET OR GRIT - PROFILE: 1.5-2 MILS
COATING: 3M BRAND SCOTCHKOTE 134
THICKNESS: 10-15 DFMT - COLOR: GREEN
EXTERIOR:
SANDBLAST: SSPC-SP-10 NEAR WHITE METAL
ABRASIVE: GARNET OR GRIT - PROFILE: 1.5-2 MILS
PRIMER COAT: RUST PREVENTATIVE EPOXY PRIMER
(CARBOLINE 893)
THICKNESS: 4-6 DFMT - COLOR: RED
FINISH COAT: HIGH BUILD POLYURETHANE (CARBOLINE 134HG)
THICKNESS: 3-4 DFMT - COLOR: WHITE (FED. I.D.#17925)
- LIFTING REQUIREMENTS:**
5200 LBS. MINIMUM RATING.
EST. WEIGHTS:
890 LBS. - EMPTY VESSEL
1890 LBS. - WITH CARBON

COMPANY CONFIDENTIAL
THIS DOCUMENT AND ALL INFORMATION CONTAINED HEREIN ARE THE PROPERTY OF THE USFILTER AND/OR ITS AFFILIATES ("USF"). THE DESIGN CONCEPTS AND INFORMATION CONTAINED HEREIN ARE PROPRIETARY TO USF AND ARE SUBMITTED IN CONFIDENCE. THEY ARE NOT TRANSFERABLE AND MUST BE USED ONLY FOR THE PURPOSE FOR WHICH THE DOCUMENT IS EXPRESSLY LOANED. THEY MUST NOT BE DISCLOSED, REPRODUCED, LOANED OR USED IN ANY OTHER MANNER WITHOUT THE EXPRESS WRITTEN CONSENT OF USF. IN NO EVENT SHALL THEY BE USED IN ANY MANNER DETRIMENTAL TO THE INTEREST OF USF. ALL PATENT RIGHTS ARE RESERVED. UPON THE DEMAND OF USF, THIS DOCUMENT, ALONG WITH ALL COPIES AND EXTRACTS, AND ALL RELATED NOTES AND ANALYSES, MUST BE RETURNED TO USF OR DESTROYED, AS INSTRUCTED BY USF. ACCEPTANCE OF THE DELIVERY OF THIS DOCUMENT CONSTITUTES AGREEMENT TO THESE TERMS AND CONDITIONS.

DESIGNER	DATE
AJA	10-8-01
CHECKER	DATE
ENGINEER	DATE
MANAGER	DATE
FILE:	
SCALE:	NONE

TITLE	VSC1000 GENERAL ASSEMBLY
CLIENT	
USFilter USFILTER/WESTATES RED BLUFF, CA 1-800-795-2664	
PROJECT	DRAWING VSC1000SHEET1.DWG
SHEET	REV
1 OF 2	

NOTES:

1. DESIGN DATA:

60" DIAMETER PRESSURE VESSEL – 5 PSIG (MAX.)
 @ 120°F – NOT ASME CODE STAMPED
 FOR VAPOR USE ONLY, MAX. FLOW = 1,500 CFM
 102 CU. FT. ACTIVATED CARBON

2. MATERIAL:

CARBON STEEL

3. SURFACE PREPARATION:

INTERIOR:

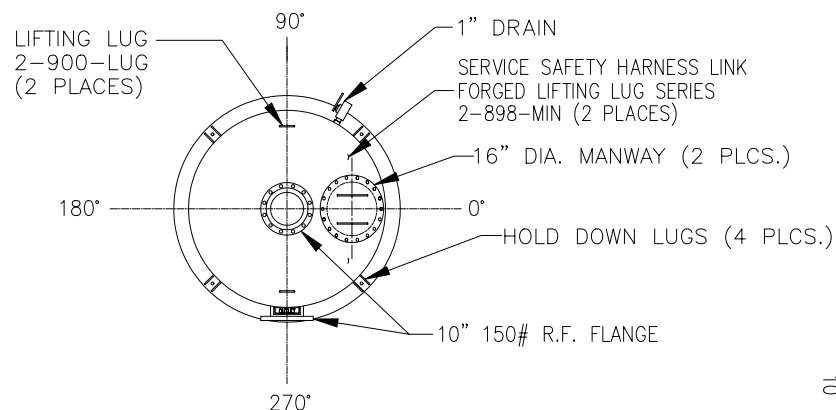
SANDBLAST: SSPC-5 WHITE METAL
 ABRASIVE: STEEL GRIT – PROFILE 1.5-2.5 MILS
 COATING: CARBOLINE 891
 THICKNESS: 10-15 MILLS – COLOR: WHITE

EXTERIOR:

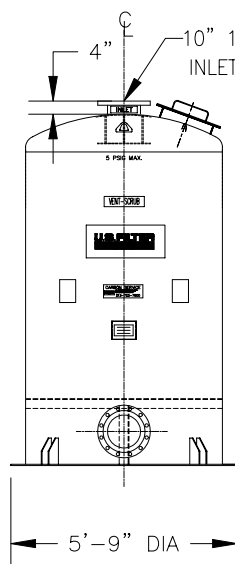
SANDBLAST: SSPC-10 NEAR WHITE METAL
 ABRASIVE: STEEL GRIT – PROFILE 1.5-2.5 MILS
 PRIMER COAT: CHEMICAL RESISTANCE CATALYZED EPOXY COATING
 THICKNESS 3-5 MILS – COLOR: GREY
 FINISH COAT: POLYURETHANE PROTECTIVE FINISH
 THICKNESS 2-4 MILS – COLOR: WHITE
 FEDERAL STANDARD COLOR 17925

4. APPROXIMATE WEIGHT:

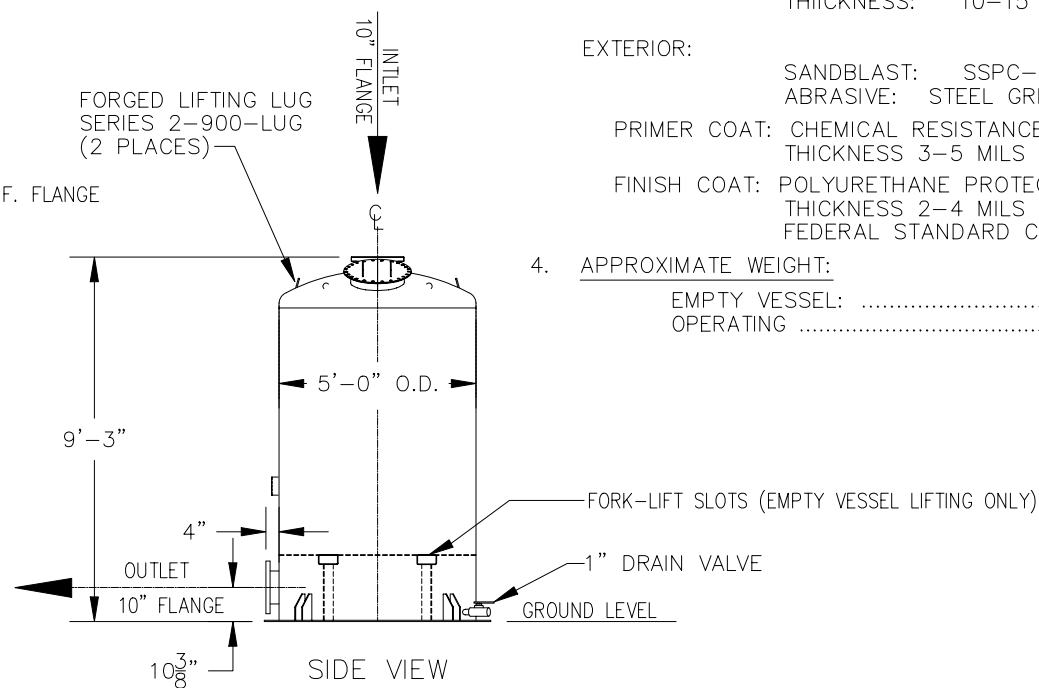
EMPTY VESSEL: 4,400 LBS
 OPERATING 7,400 LBS



PLAN VIEW



ELEVATION VIEW



SIDE VIEW

COMPANY CONFIDENTIAL
 THIS DOCUMENT AND ALL INFORMATION CONTAINED HEREIN ARE THE PROPERTY OF THE USFILTER AND/OR ITS AFFILIATES ("USF"). THE DESIGN CONCEPTS AND INFORMATION CONTAINED HEREIN ARE PROPRIETARY TO USF AND ARE SUBMITTED IN CONFIDENCE. THEY ARE NOT TRANSFERABLE AND MUST BE USED ONLY FOR THE PURPOSE FOR WHICH THE DOCUMENT IS EXPRESSLY LOANED. THEY MUST NOT BE DISCLOSED, REPRODUCED, LOANED OR USED IN ANY OTHER MANNER WITHOUT THE EXPRESS WRITTEN CONSENT OF USF. IN NO EVENT SHALL THEY BE USED IN ANY MANNER DETRIMENTAL TO THE INTEREST OF USF. ALL PATENT RIGHTS ARE RESERVED. UPON THE DEMAND OF USF, THIS DOCUMENT, ALONG WITH ALL COPIES AND EXTRACTS, AND ALL RELATED NOTES AND ANALYSES, MUST BE RETURNED TO USF OR DESTROYED, AS INSTRUCTED BY USF. ACCEPTANCE OF THE DELIVERY OF THIS DOCUMENT CONSTITUTES AGREEMENT TO THESE TERMS AND CONDITIONS.

DESIGNER	DATE
LLR	7-6-01
CHECKER	DATE
ENGINEER	DATE
MANAGER	DATE

FILE:
 SCALE: NONE

TITLE VSC3000 GENERAL ASSEMBLY

CLIENT

USFilter

USFILTER/WESTATES
 RED BLUFF, CA
 1-800-795-2664

PROJECT

DRAWING
 VSC3000GENASSY

SHEET
 OF

REV