

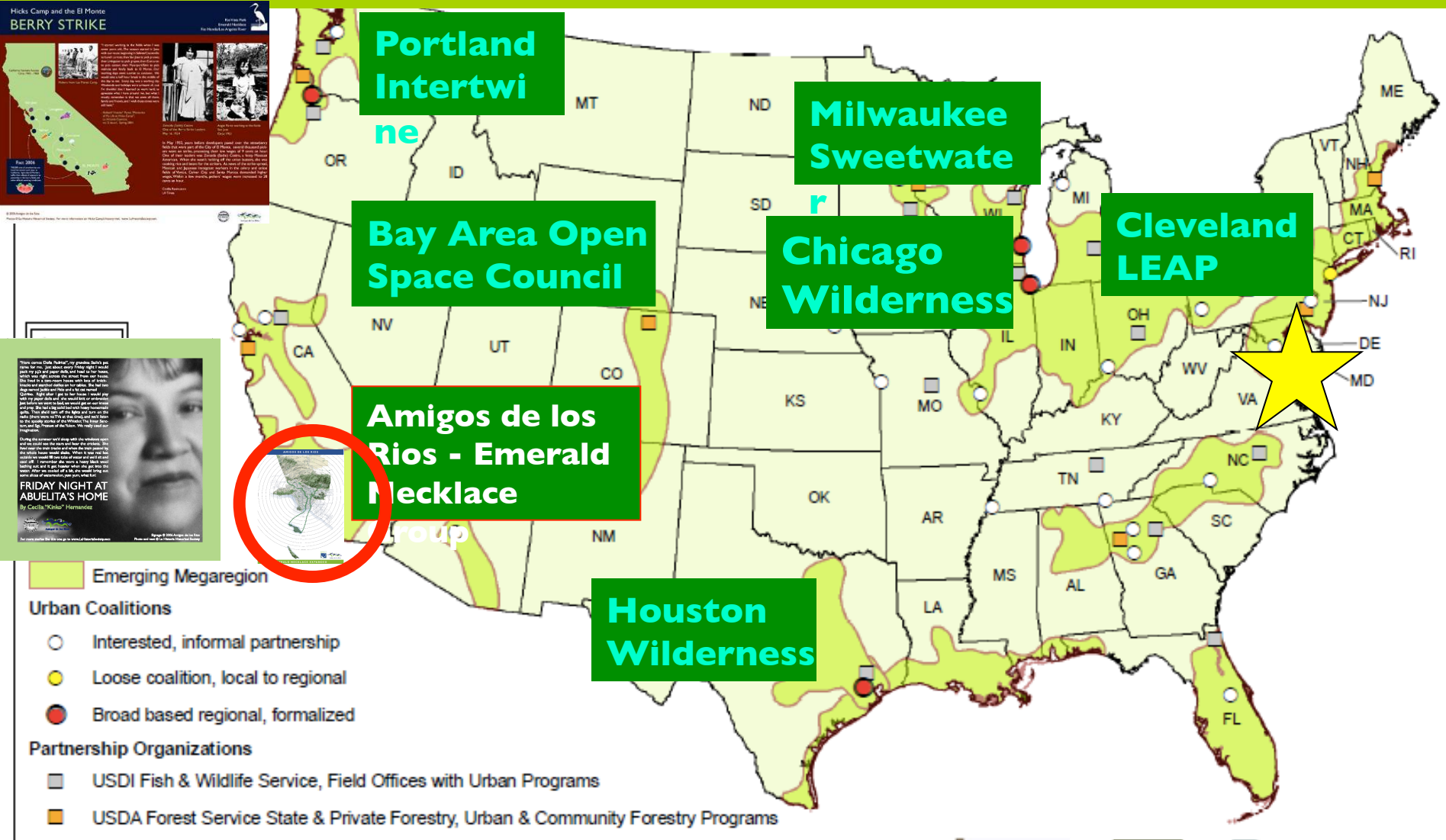
GREEN INFRASTRUCTURE PANEL

CITIES “Metropolitan Areas” AS ECOSYSTEMS

- Recognizing that cities are ecosystems – w/ interacting human, structural & ecological components – creates great potential for urban forests & **green infrastructure** to improve life in urban areas.



METROPOLITAN GREENSPACE ALLIANCE



GREEN INFRASTRUCTURE PROJECTS ACROSS THE COUNTRY

METROPOLITAN GREENSPACE ALLIANCE

- **URBAN WATERS FEDERAL PARTNERSHIP**

- DOI/ EPA/USDA/DOA/DOC/Corp for National and Community Service, USDHHS, DHUD/White House Domestic Policy Council (2 of 7 pilot projects)

- **URBAN RIVERS RESTORATION INITIATIVE - EPA/ACE**

- **Blueways Trails Initiative**

- (1 of 7 - Indiana River Initiative)

- **NATIONAL RECREATION AREA DESIGNATIONS - DOI**

- **Wilderness Protection Acts - NPS**

- **Federal Clean Water Act Compliance**

- Green Infrastructure/Storm Water Rule - EPA

Chicago

With 259 member organizations, the Chicago Wilderness Green Infrastructure Vision (GIV) paints a bold picture of the region - protection of the natural areas, corridors, open spaces critical to our quality of life.

Nearly 370,000 acres of natural areas that make up Chicago's Wilderness comprise our "green infrastructure," and are as critical to the people in this region as our built environment and transportation systems.

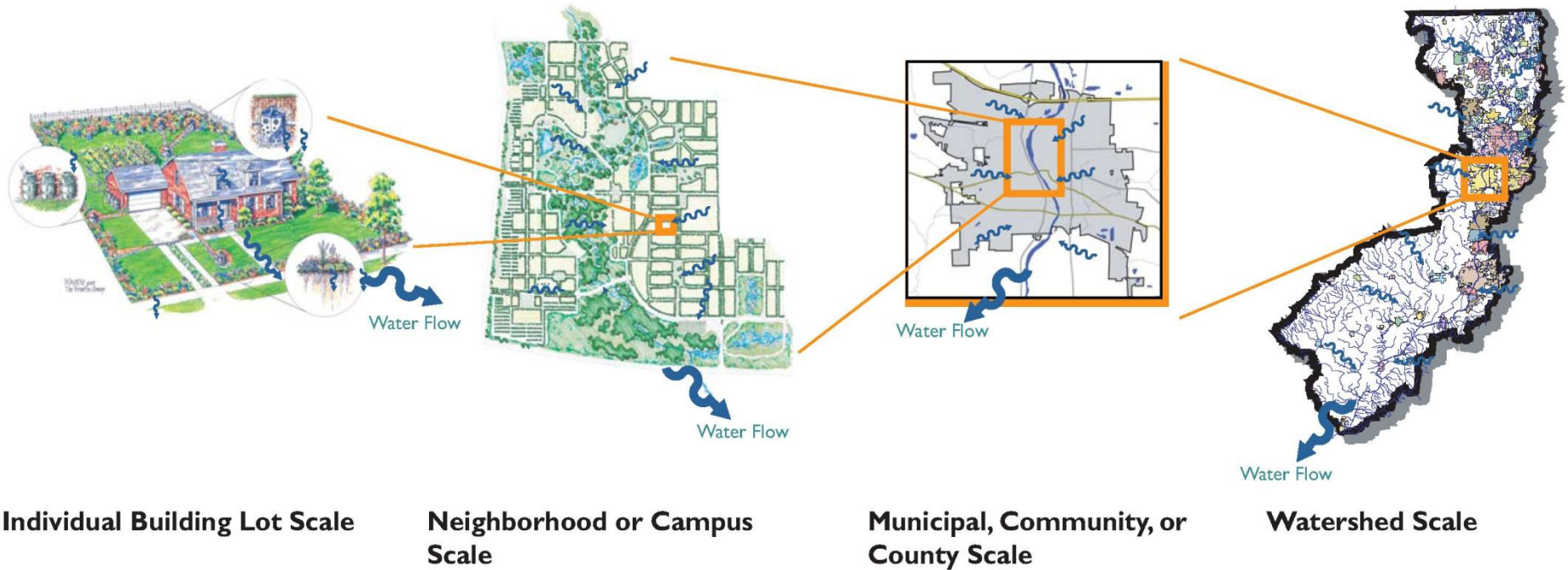
GIV identifies 1.8 million acres of prospective protection and restoration areas in the Chicago Wilderness region — spanning from southeast Wisconsin, through northeast Illinois into northwest Indiana and southwest Michigan.



Chicago Wilderness works to implement green infrastructure at multiple scales

"The nation behaves well if it treats the natural resources as assets which it must turn over to the next generation increased, and not impaired in value."

- Theodore Roosevelt



METROPOLITAN GREENSPACE ALLIANCE

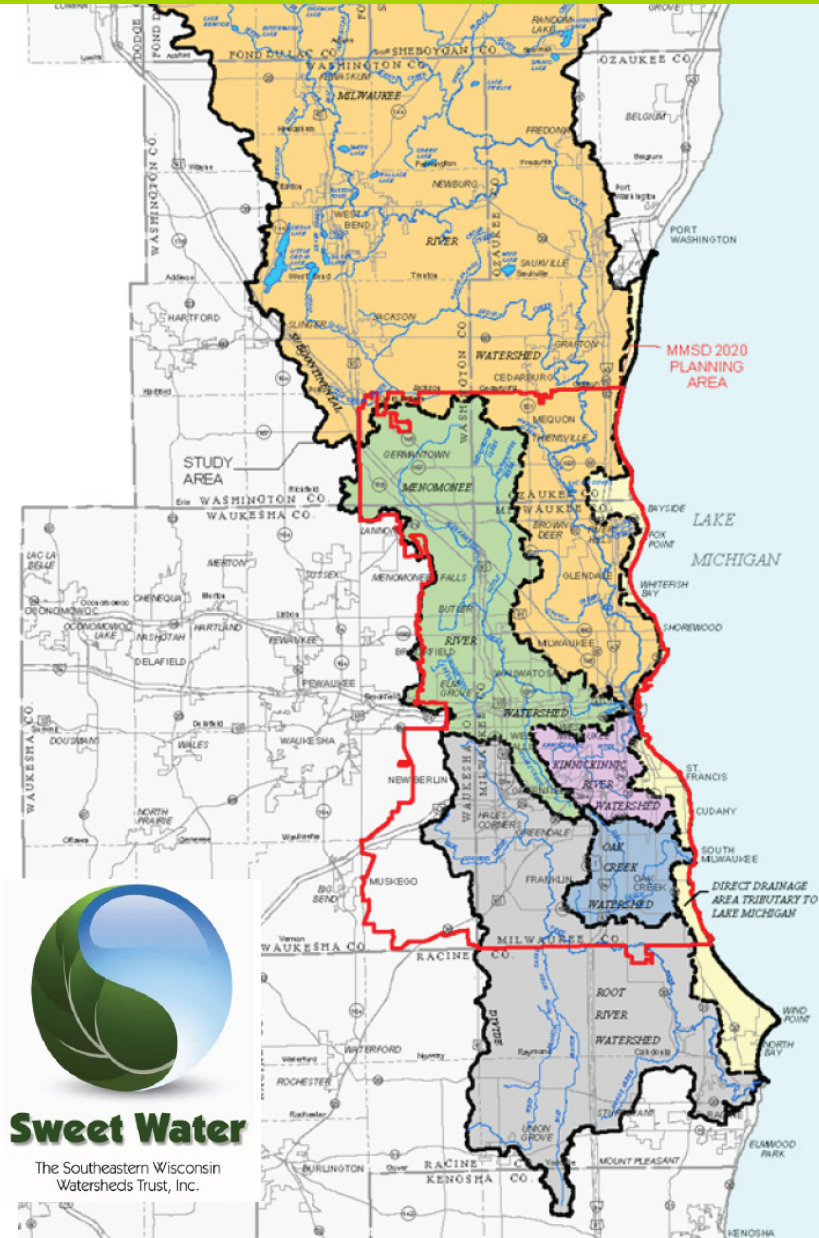
Milwaukee

Sweet Water, the Southeastern Wisconsin Watersheds Trust, Inc., is an award-winning nonprofit partnership established to achieve healthy water resources throughout the 1,100 square mile Greater Milwaukee watersheds. Recognizing that our rivers travel through the region irrespective of governmental boundaries, Sweet Water addresses the issues facing our five watersheds and near shore Lake Michigan through a cooperative, basin-wide approach. Members include local governments, special purpose districts, non-profits, residents and representatives of business and academia.



Sweet Water

The Southeastern Wisconsin
Watersheds Trust, Inc.



Our Southeastern Wisconsin Watersheds

Area:

Watershed:

(in sq. miles)

Kinnickinnic River 24.7

Menomonee River 135.8

Milwaukee River 700.0

Oak Creek 28.2

Root River 197.6

**Lake Michigan Direct
Drainage Area 40.7**

Total Square Miles: 1,127.0

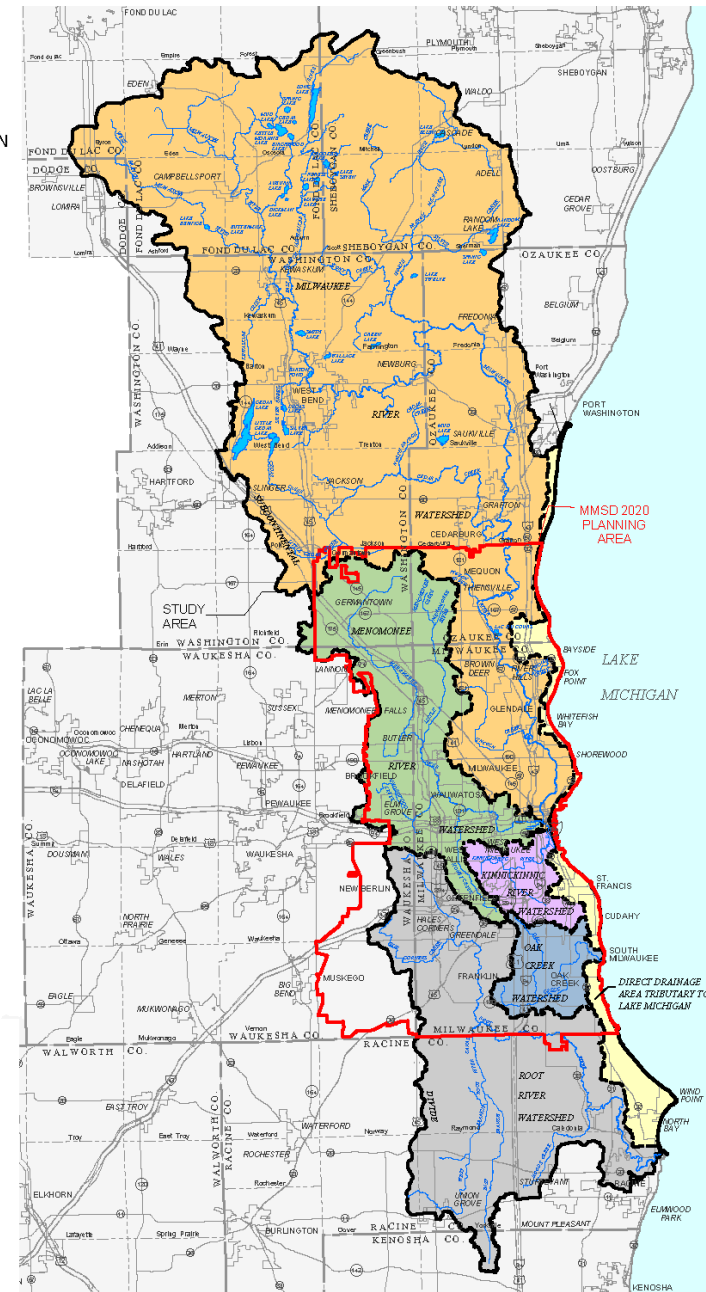
Total Perennial River Miles: 600+

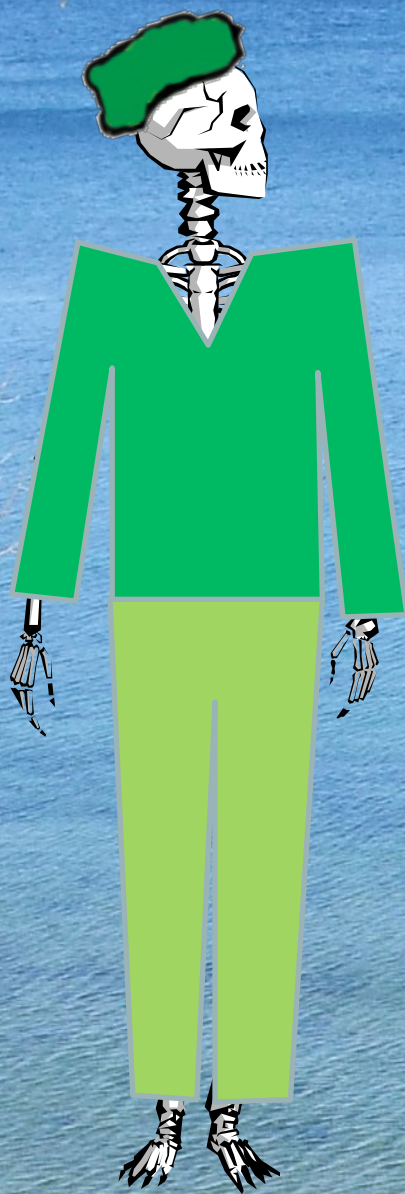
Number of Counties: 9

Number of Local Municipalities: 83

Map 17

SURFACE DRAINAGE
AND SURFACE WATER IN
THE REGIONAL WATER
QUALITY MANAGEMENT PLAN
UPDATE STUDY AREA





**RESPECT
OUR WATERS**
.COM



To go Green...

- Rain Barrels
- Rain Gardens
- Porous Pavement
- Roof Gardens 8.4 acres...
- ROW Planters



Residential Green Infrastructure Planning & Design Along the Kinnickinnic River BMP Implementation Plan: South 14th, 15th, 16th Streets (Milwaukee, WI)





26,000+ Plants Sold Since
2006

mmmm Rain barrels



More than
17,000
SOLD
Since 2002

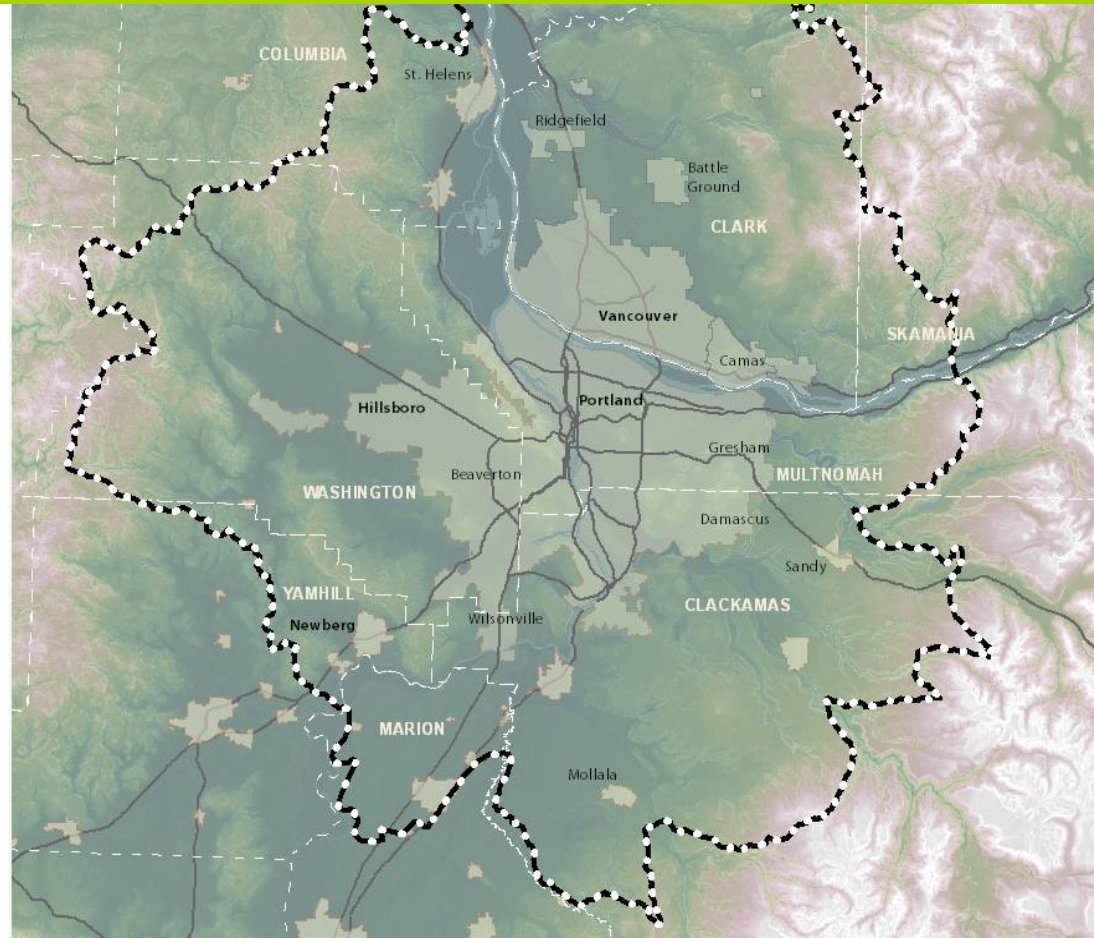
METROPOLITAN GREENSPACE ALLIANCE

Portland Intertwine

is our connected network of parks, trails, natural areas in Portland, Oregon, Vancouver, Washington region.

Intertwine provides unparalleled opportunities to preserve natural areas, open spaces, water and wildlife habitat.

Intertwine reflects region's passion for quality of life encouraging recreation, connection to nature, and active transportation: walking, running and biking.



**As urban areas grow denser,
Intertwine promotes the
health & happiness we
so dearly value**





South Waterfront District

Pennoyer Street Green Street Design



I N T E R V I W I N E



New Columbia Neighborhood

- 98 % of stormwater onsite
- 101 pocket swales
- 31 flow-through planter boxes
- 40 public infiltration dry wells



California Academy of Sciences: The Living Roof



BioTray®



Releasing the Heat



Above the Museum

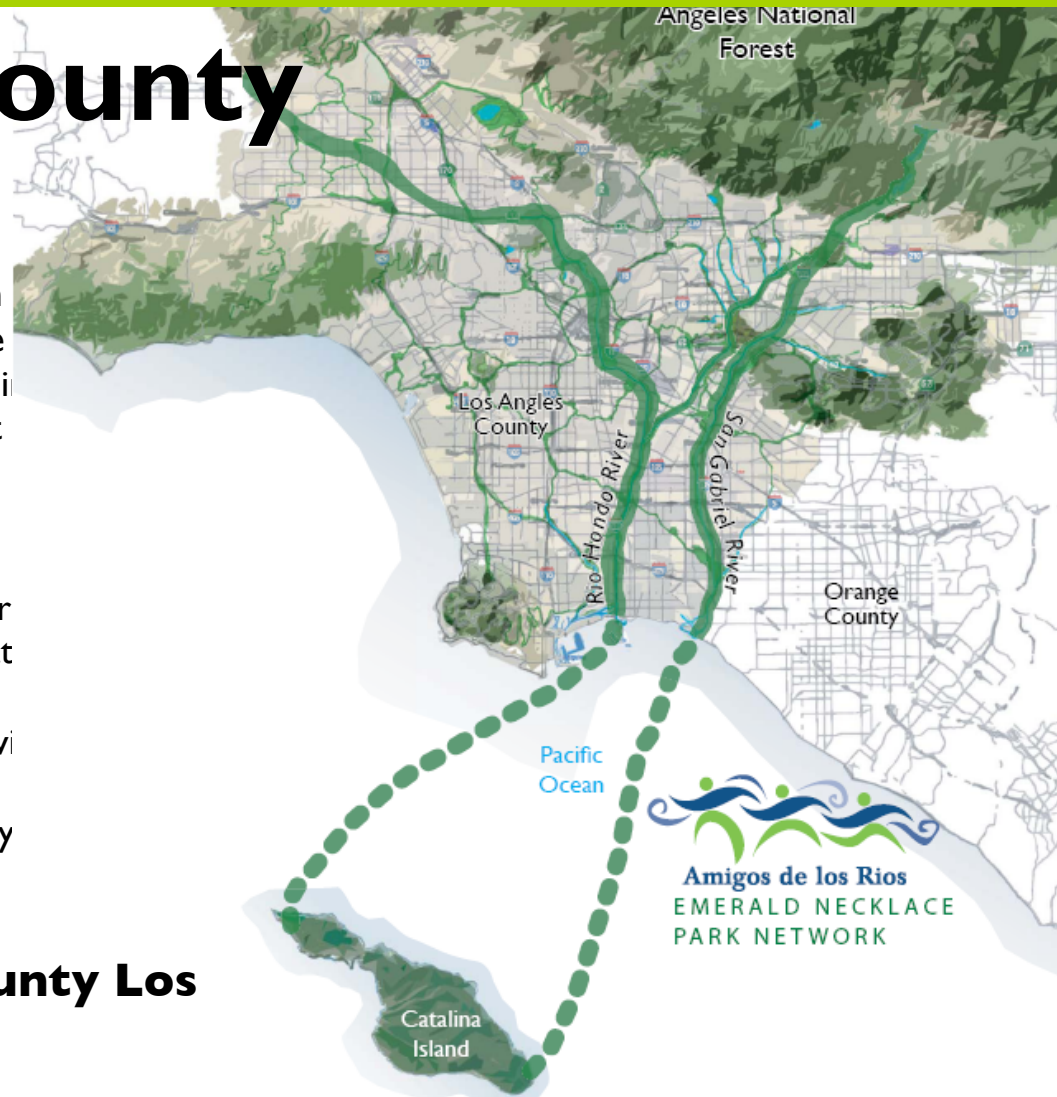
- Renzo Piano's masterstroke of design lies in making the park's environment such a visible part of the building itself. The rooftop's seven undulating green hillocks pay homage to the iconic topography of San Francisco and blurs the boundary between building and parkland.

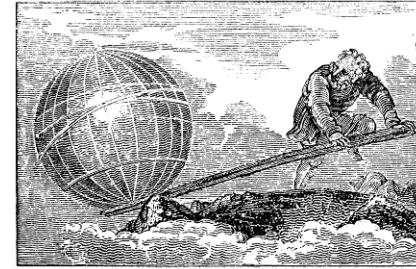
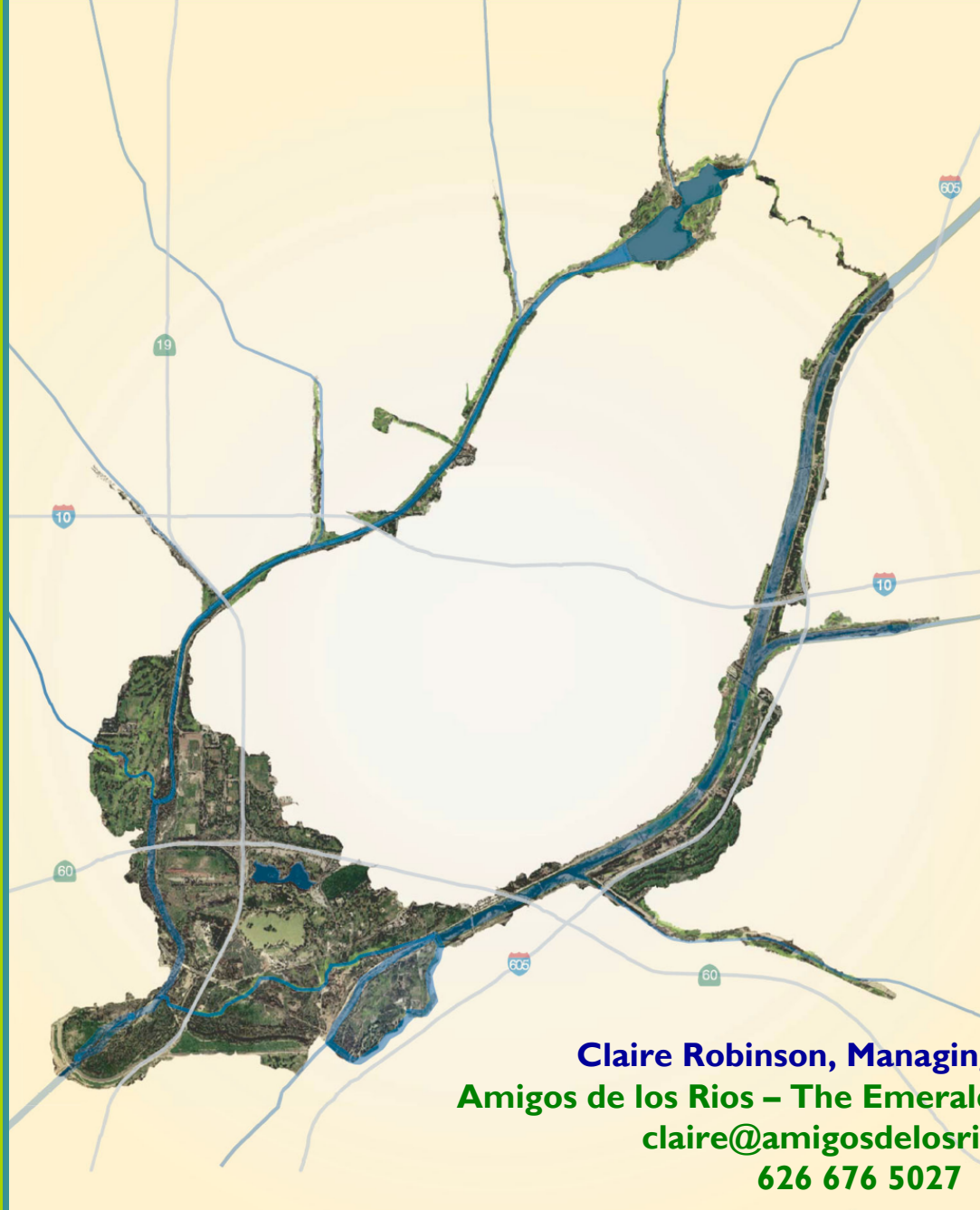
METROPOLITAN GREENSPACE ALLIANCE

Los Angeles County

The Emerald Necklace is a regional Green Infrastructure plan for a 68 mile-long interconnected loop of multi benefit parks and greenways. The network will serve 62 cities in the region and over 2.5 million residents of the Rio Hondo and San Gabriel River Watersheds in East Los Angeles County. Nestled in the heart the San Gabriel Valley and extending from the Angeles National Forest down to the Pacific Ocean, the necklace will provide desperately needed recreation areas for communities suffer from health challenges and social issues associated with a lack of open space and recreation opportunities. The Emerald Necklace will provide alternative transportation corridors, habitat restoration areas, improve air and water quality and celebrate local cultural heritage

- **Serving 62 cities in East County Los Angeles**
- **5000 plus Acres of Land**
- **68 Miles of Multi-Benefit River Trails**





San Gabriel Emerald Necklace

East Los Angeles County

**EPA URBAN WATERS
NATIONAL TRAINING**

OCTOBER 25, 2012

Claire Robinson, Managing Director
Amigos de los Rios – The Emerald Necklace Group
claire@amigosdelosrios.org
626 676 5027

EMERALD NECKLACE | PARK NETWORK





Necessity of Green Infrastructure:

Majority of the population
live in urban areas:

•PUBLIC HEALTH

- Access to Recreation
- Social Equity/Environmental Justice
- Nature Deficit Disorder

•ENVIRONMENTAL HEALTH

- Air & Water Quality
- Greenhouse Gas Uptake
- Heat Island Mitigation

•COMPLIANCE FEDERAL & STATE MANDATES

- Clean Water & Air Acts
- Ms4 Permits, SB375...

•BEAUTY...CULTURE

Olmsted Bartholomew 1929 Green Infrastructure Vision



San Gabriel Mountains



The Rio Hondo is a seasonal river and is especially powerful during periods of excessive rain. It is important to know that the Rio Hondo is also quite dangerous even when there is not much water in the channel. The smooth, trapezoidal shape of the channel forces the water to move with great force. As the sides and bottom of the channel are slippery, it is very difficult to escape the strong currents of the river. To someone who has not seen the river, its awesome power is at all water levels.

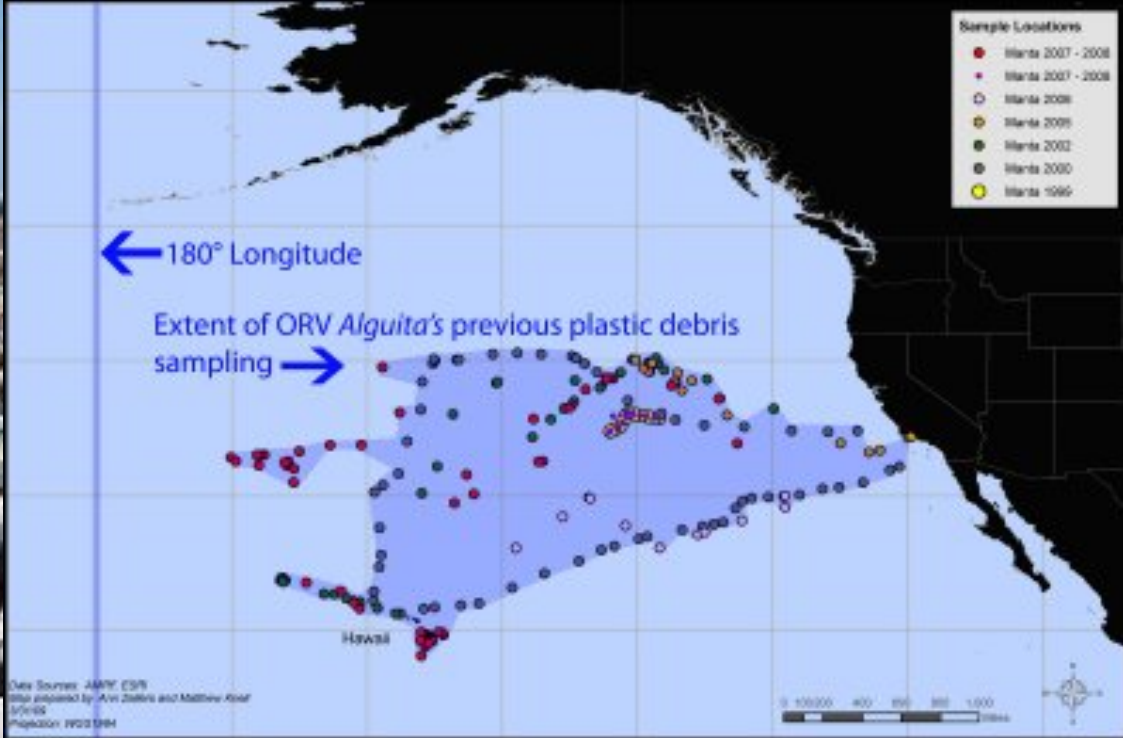
The Rio Hondo did not always look as it does today. Until the river was concreted in the 1950s, the Rio Hondo covered extensive areas in farms, fields, and homes. The braided streams of the river meandered through the area, **switching** the soil with rich sediments from the San Gabriel Mountains. Channeling the river did prevent the area from flooding, but it also took away the valuable recreational space along the river banks. Lashbrook Park gives a piece of the Rio Hondo's original green space back to the community and people of El Monte.



From top: El Monte boys using the Rio Hondo as a recreational space (© La Brea's Society El Monte); the 1956 flood confuses the river to control the river (© Arroyo Historical Society); Big Hogs: 1991 world of the Rio Hondo's braided streams (© UICLA Geography Archives)

Rio Hondo





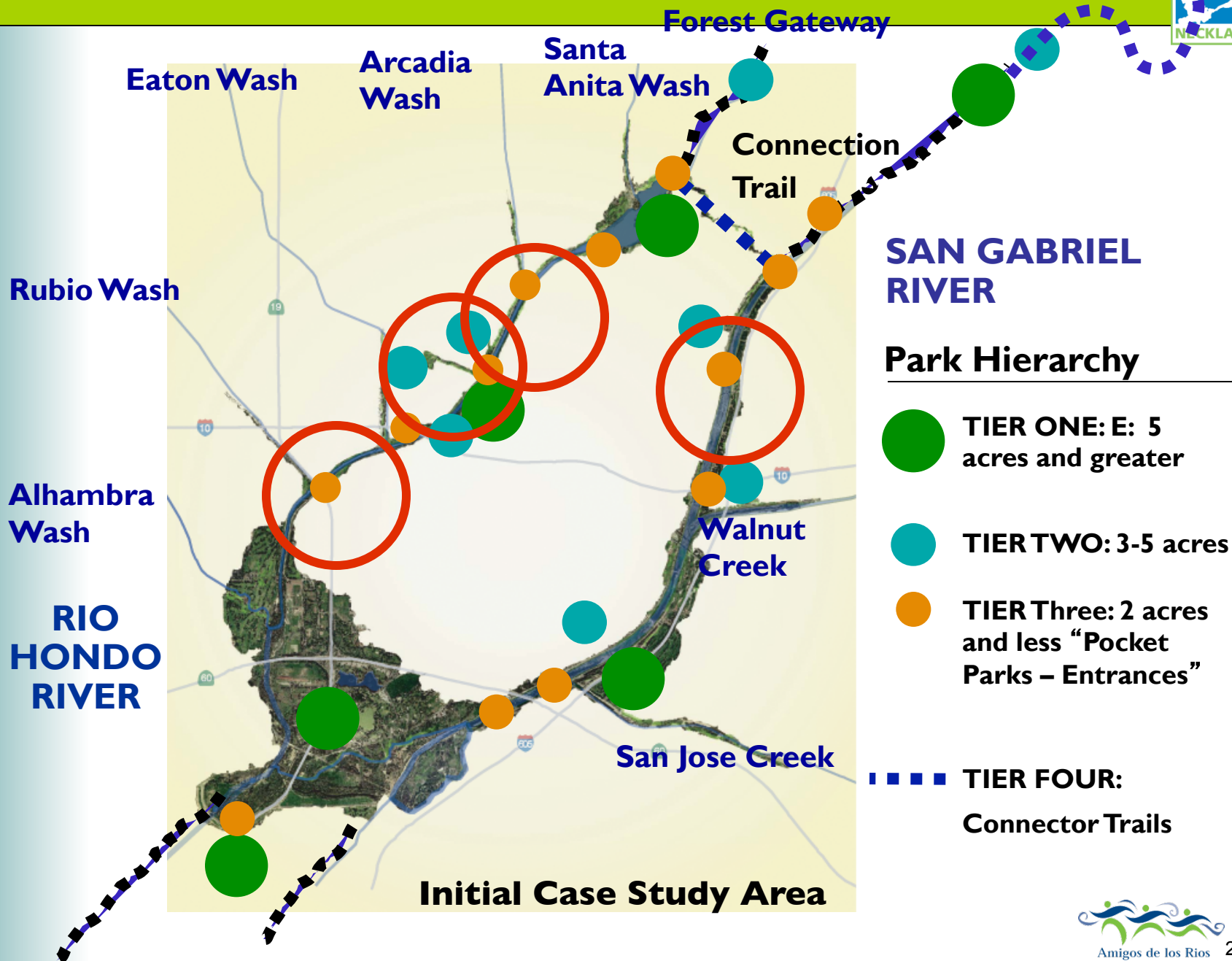
STORM DRAIN SYSTEM



Catalina Island



Emerald Necklace Park Network



'Multi Benefit' Project Components

Amigos de Los Rios needs your help!

We have volunteer opportunities at various parks and sites along the Emerald Necklace. Be a part of making the Emerald Greenway a reality. This would be a great opportunity for families to get outside to do some good for the environment and their communities. If you have questions, we'd like to hear from you.



EMERALD NECKLACE



SAN GABRIEL RIVER

Sign up by contacting us by phone or email:
626.444.8665
volunteer@amigosdelosrios.org



El Collar Esmeralda

El Collar Esmeralda es una visión de una 17 milla cadena de interconectados senderos, parques y caminos verdes tocando a 17 ciudades y casi la mitad de un millón de residentes a lo largo de los Río Hondo y San Gabriel Ríos. La cadena de senderos va conectar 1,500 acres de parques, terrenos abiertos y corredores de hábitat, al mismo tiempo históricamente conectando los ríos de Río Hondo y San Gabriel. El multi-beneficial sistema de parques y senderos va ofrecer crítica oportunidades recreacional y fomentar la salud del público.

Proyecto Detalles: (A un vistazo)

Herencia de Naturaleza y Cultura: Con restauración de hábitat, el carácter original de la tierra y las comunidades del pasado regresan a vida. Las historias de los Latinos, los barrios y los Americanos Nativos están presentes. Esto ofrece a generaciones del pasado y futuro una vislumbre del pasado.

Oportunidades de Recreación y la Salud Publica: El collar Esmeralda ofrece muy importante y necesario oportunidades de recreación para residentes sufriendo de enfermedades crónicas como hipertensión, asma, diabetes y obesidad. También crea alternativas corredores de transportación con oportunidades para caminar y andar en bicicleta para trabajo o la escuela.

La Salud y Restauración del Medio Ambiente: La restauración del medio ambiente y la salud del medio ambiente van mano y mano. Limpiando áreas afectadas con quemadura y haciendo restauración de hábitat ayuda a mejorar la salud de los ecosistemas biológicos interconectados.

Biodiversidad Urbana y Hábitat Restauración: Restauración de hábitat ofrece una plataforma para el desarrollo de Biodiversidad Urbana, reforzando el nativo flora y fauna.

Acceso a Naturaleza/Multi Modal Aprendiendo para Jóvenes Marginados: Escenas naturales forman lugares muy dinámicos donde podemos aprender y esto se ha conectado muy fuerte con mejor funcionamiento en la escuela. Salones de la escuela afuera crean una conexión dentro de los jóvenes de la a cuido y la naturaleza.

Instrucción de Trabajo Para Jóvenes: El Amigos de los Ríos 'Green Jobs Corp' programa no solamente es para crear trabajos en una economía que lo necesita, pero también da a los jóvenes las habilidades y experiencia para entrar a los trabajos del nuevo y creciendo verde economía. **Gestión de Recursos de Agua:** El plantando de árboles a lo largo de la Collar Esmeralda ofrece un viable sistema de la gestión de tempestad agua—un árbol intercepta 3,000 galones de lluvia cada año. Además, los proyectos a lo largo de la Collar Esmeralda mejoran la calidad de agua, y también animan conservación por utilizando practicas sostenibles de panorama.



Water Resources

Land Use /Infrastructure

- Parks & Parkways
- Contours and Topography
- Porosity & Permeability
- Matching Sources & Uses of Water

California Friendly Plants

- Knowledge of Native Soils
- Interest in Native Habitat
- Cultural & Natural History



SWALE CULTURE

Amigos de los Rios – The Emerald Necklace

"Here comes Dolita Pedrital", my grandma Sadie's pet name for me. Just about every Friday night I would pack my pj's and paper dolls, and head to her house, which was right across the street from our house. She lived in a two-room house with lots of knick-knacks and starched dollies on her tables. She had two dogs named Jodie and Fido and a fat cat named Quilino. Right after I got to her house I would play with my paper dolls and she would knit or embroider. Just before we went to bed, we would get on our knees and pray. She had a big solid bed with heavy homemade quilts. Then she'd turn off the lights and turn on the radio (there were no TVs at that time), and we'd listen to the spooky stories of the Whistler, The Inner Sanctum, and Sgt. Preston of the Yukon. We really used our imagination.

During the summer we'd sleep with the windows open and we could see the stars and hear the crickets. She lived near the train tracks and when the train passed by, the whole house would shake. When it was real hot outside we would fill two tubs of water and we'd sit and cool off. I remember she wore a heavy black wool bathing suit and it got heavier when she got into the water. After we cooled off a bit, she would bring out some slices of watermelon, yum yum, what fun!

FRIDAY NIGHT AT ABUELITA'S HOME

By Cecilia "Kinko" Hernandez



For more stories like this one go to www.LaHistoriaSociety.com

Signage © 2006 Amigos de los Rios
Photo and text © La Historie Historical Society



Green Infrastructure – What is it?



CONSERVATION



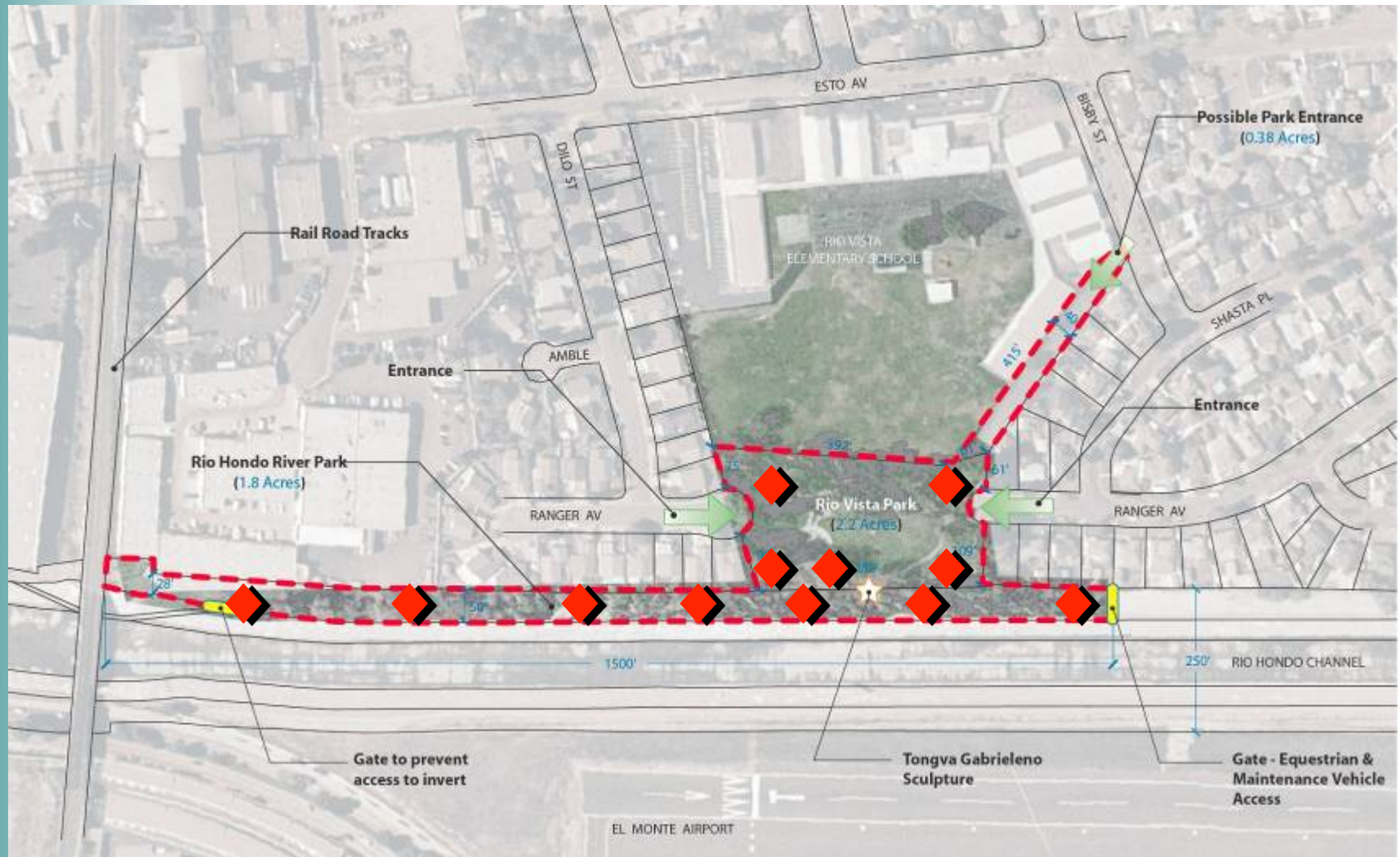
EXERCISE AREAS



A young girl with brown hair, wearing a white shirt, is holding up a drawing. The drawing features a large blue butterfly with orange and black markings, a red ladybug, and a yellow flower. The words "Pete" and "Katherine" are written on the drawing.



Rio Vista Park



Water Resources: Conservation, Infiltration



Tongva Gabrielino Tribe



Tongva Homes KICH (Keesh)

Rio Vista Park
Emerald Necklace
Rio Hondo/Los Angeles River

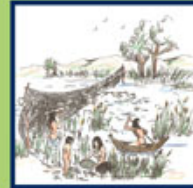


One of the great Tongva Myths describes the origin of the Kich. One of the seven giants who hold up the world was TEHOVET NEKICH. This giant wore a wonderful woven cap that CHEHOOT, the Earth Mother had made for him because she loved him very much. When TEHOVET NEKICH realized that people needed to have shelter from the sun and a warm place to go at night, he took off the wonderful woven cap and placed it on the ground and invited people inside. This became the first Kich or Tongva home. Birds and squirrels came and made an opening for people could enter the giant's cap and dwell in their new shelter.

This decorated dome structure exemplifies the typical Tongva Kich (home). Family and friends helped build these structures made from willow and other natural construction materials. The homes were built to be thirty five feet in diameter and twelve to fourteen feet high. Extended family members shared sections of the homes. One could come into the home by crouching through a low entrance that faced east. Movement within the home was counter clockwise in reference to the cycle of the sun.

Life along the River TONGVA

Rio Vista Park
Emerald Necklace
Rio Hondo/Los Angeles River



The men are hunting water fowl with nets and bow and arrow. The woman is gathering duck eggs.



Acorn gathering. The men are pulling down the acorns and the women are storing the acorns in gathering baskets.

The Tongva/Gabrielino lived, for thousands of years, in the area that is now covered by Los Angeles County and parts of Orange County. They started each day with a prayer to bring out the sun and bathed in the waters of the river. Food was abundant and men chanted while fishing and hunting, women sang while they gathered plums, seeds, and shell fish, and children laughed while playing in the river. The sound of Shamans chanting in their sacred house was ever present. If you listen closely, you can still hear the Shamans' chants in the wind and their whispers in the water.

Tongva/Gabrielino hunted and fished the sea in great red wood and pine plank canoes called Te-ott and fished along the shore using large tule canoes. They also crossed to the island areas to trade with their fellow Tongva who chose to inhabit the island areas.

They spent the months from spring to fall gathering food and preparing it for the rest of the year. They also gathered reeds and

grass to make the different items they needed for daily life. Their houses were dome shaped, and were made by bending and tying willow branches into the shape needed and river reeds and grasses were then attached as thatching. The domes had one entrance and a "smoke hole" in the ceiling to let out the smoke from the small fire that was used for light and for keeping warm.

Plants and animals could not be collected or hunted unless prayers were made to ask the permission of the plant and animal people. Songs were sung and melodies were hummed to ensure the goodness of the food and to maintain the all important balance and connection in nature.

Tongva/Gabrielino, through their culture and rituals, have marked an important era in the history of this area and their significance will forever be present.

Hunting Tools and Artifacts



Traditional Tongva Hunting Tool



Traditional Tongva Hunting Tool



Traditional Tongva Hunting Tool



Traditional Tongva Hunting Tool



Traditional Tongva Hunting Tool



Traditional Tongva Hunting Tool



Traditional Tongva Hunting Tool





© Amigos de los Rios





This plant palette has been selected to represent plants that are native to our watershed for an urban greenway. The palette is consistent with the Los Angeles River Master Plan Landscaping Guidelines and Plant Palettes.

The **Gabrielino-Tongva** knowledge and use of native plants extends from the medicinal and spiritual, to constructional and dietary. **Medicinal** plants were used for all types of healing from



Re- Vegetation of Asphalt Quilt – Global Climate Action/Heat Island Mitiga



Native Plants at RIO VISTA PARK



- Native
- Oak Woodland
- Coastal Sage Scrub
- Chaparral
- Desertscrub

The plants shown here are native to the area and are important for the local ecosystem. They are also beautiful and can be used in landscaping. The plants shown here are native to the area and are important for the local ecosystem. They are also beautiful and can be used in landscaping.



regional signage system



"We didn't care for playgrounds...the **RIVER** was better!"

1. "Our recreation was in the evenings, when all the children played games like hide and seek."

2. "Our playground was the riverbed and all open space around Hicks Camp."

3. "We were all there, family, friends, and I wish those times were still here."

4. "We didn't have much, the roads were dirt, some homes were made of cardboard, but we were all one family."

5. "Every celebration, every funeral, every event, we all knew that it was for everyone."

6. "We went to school barefoot."

7. "Residents of the barrios were sons and daughters of the Rio Hondo. They played in it and depended on it."

© 2006 Amigos de los Rios. Photos © La Historia Historical Society. For more information on the history of the Rio Hondo, visit www.LaHistoriaHistoricalSociety.com.

Author's Quotes:


- 1, 3, 4, 5, and 6: Richard (Huelco) Perez - former resident of Hicks Camp.
- 2: Dr. Ben Campos - former resident of Hicks Camp.
- 7: Sergio Jimenez - historian and grandson of Hicks Camp residents.


CELEBRATE Natural & Cultural HISTO

Natural & Cultural History


Hicks Camp and the El Monte BERRY STRIKE

Rio Hondo Park
Emerald Necklace
Rio Hondo/Los Angeles River






Katherine Tabor's Recollections
c.1910 - 1913 - 1919




Katherine's House Los Flores, Calif.

"I started working in the fields when I was seven years old. The season started in June with our route beginning in Salinas/Causilla to Turlock/Lodi/Hood then San Joaquin to pack grapes then Ukiah/Oakland to pack grapes then Colusa to pack walnuts and finally back to El Monte. Our working days were sunrise to sundown. We would take a half hour break in the middle of the day to eat. Every day was a working day. Weekends and holidays were unheard of. Just for goodness sake I learned to work hard, to appreciate what I have around me, but what I mostly remember is that no one at home, family or friends, and I wish those times were still here."

Robert "Macario" Perez, President of the Life in Hicks Camp"
La Jolla, CA, ca. 3 Month, Spring 2010.



Zenaida (Daddy) Castro
One of the Berry Strike leaders.
May 14, 1914




Angie Perez working in the fields
Oct 1911

In May, 1913, years before developers paved over the fields that were part of the City of El Monte, several men went on strike, protesting their low wages of \$9. One of their leaders was Zenaida (Daddy) Castro, a Mexican. When she wasn't holding off the union by cooking rice and beans for the strikers. As news of the Mexican and Japanese immigrant workers in the call fields of Venice, Culver City and Santa Monica, they began to hear. Within a few months, pickets' wages were increased as well.

Credit: Reimundo
LA Times


Fact 2006

100,000 acres of strawberries are grown in Southern California annually. In California, approximately 10 percent of the state's strawberry production is attributable to berrying fields and some difficult working conditions.



FRIDAY NIGHT ABUELITA'S

By Cecilia "Kinko" Hernandez



For more stories like this one go to [http://www.fridaynightabuelitas.com](#)

Green Infrastructure -- Nexus of Natural & Cultural Hi



HICKS CAMP
circa 1948



La Historia Society



Making a difference LEADERS

Rio Vista Park
Emerald Necklaces
Rio Honda/Los Angeles River



Lexington School Classes, Hicks Camp
Circa 1930s



Lexington School Classes, Hicks Camp
Circa 1940s



Red Ramage Circa 1980

The Lexington School was the first and only school in El Monte up until 1923. At this time, a second school, Columbia, was built to accommodate the increased student population in the city. White students were permitted to attend the new school, while students of Mexican-American and Japanese descent were confined to the old Lexington School. This was the beginning of school segregation in El Monte. Segregation existed in housing and public places as well. Segregation was rationalized with the argument of language barriers

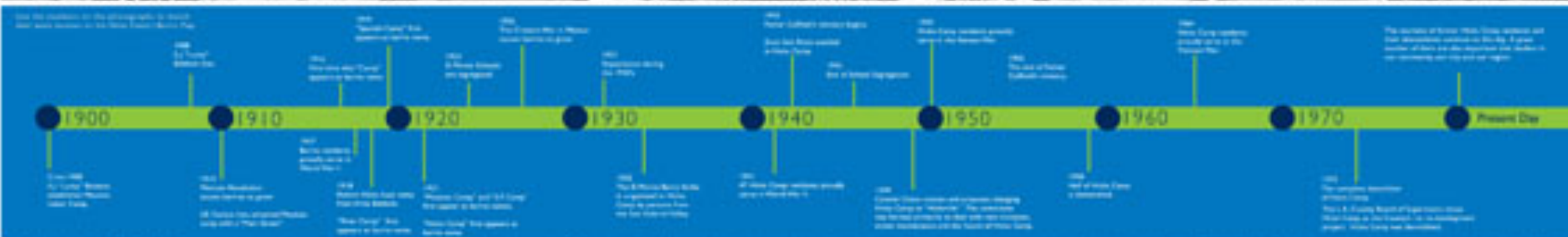
between the Spanish speaking and English speaking students, although the Mexican and Japanese students spoke English. In 1942, when Reverend Dwight Ramage and his family moved to El Monte, he joined Father Coffield of the Hicks Camp Catholic Church, in a quest to desegregate the local schools. A large community meeting was held at Columbia School in 1945 in order to address desegregation of the students. Shortly afterwards, El Monte Schools were integrated and have been ever since.



Father Coffield during a Christmas event at Hicks Camp
Circa 1954

The History of HICKS CAMP

Rio Vista Park
Emerald Necklaces
Rio Honda/Los Angeles River







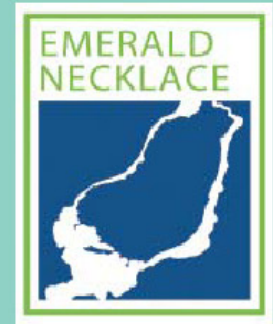
RIO VISTA PARK



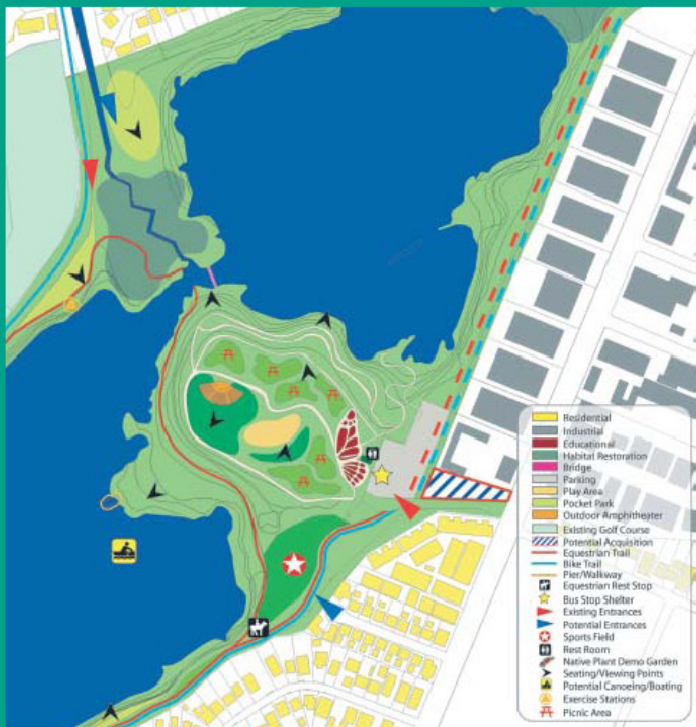


NEW PARKS

-QUARRY REDEVELOPED



www.amigosdelosrios.org | 3244 Santa Anita Ave | Altadena, CA 91001 | t: [626] 676.5027 | f: [626] 798.2835



- Sustainably designed parks
- Recreation opportunities & public health
- Cultural & natural heritage
- Air quality & stormwater management
- Habitat restoration
- Environmental education
- Wayfinding & interpretive signage



> peck park water conservation park



City of El Monte Department of Community Services:
Gibson Park Community Profile Questionnaire

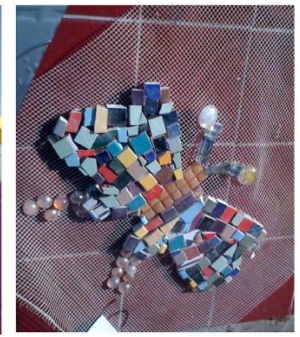
Office Use Only / Para Uso Oficial

Interviewer: Nue / Clara / Minnie Lopez
Location: Shawson School Parent
Date/Time of Interview: Dec 8, 2003 Between 1-3pm

- Name / Nombre: Christine Mora (willy to add to register)
- Residence in area (1/4 mile of park)? ¿Casa dentro de la area (1/4 mile del parque)? ☒ Yes / Si ☐ No
- What language(s) do you speak? ¿Qué idioma(s) habla usted? Spanish & English
- Would you like to have a neighborhood park? ¿Le gustaría tener un parque del barrio? ☒ Yes / Si ☐ No
- Why? ¿Porqué? Because its very dangerous for the children to play in the streets on cross valley to Baldwin mini park we need a park in our area.
- Do you have children that would use a park? ¿Tiene hijos que les gustaría a un parque? ☒ Yes / Si ☐ No How many? ¿Cuántos? 4
- What would you like to see in a neighborhood park? ¿Qué le gustaría ver en un parque del barrio?
☐ Trees / Arboles ☐ Paths / Senderos ☐ Flowers / Flores
☐ Benches / Bancos ☐ Playground / Patio de recreo ☐ Habitat / Hábitat
☐ Slides / Plátanos ☐ swings / columpios ☐ Barbecue / Parrilla
☐ Basketball courts / Canchas de baloncesto ☐ Picnic Tables / Mesas para picnic
☐ Volleyball courts / Canchas de voleibol ☐ Other / Otro:



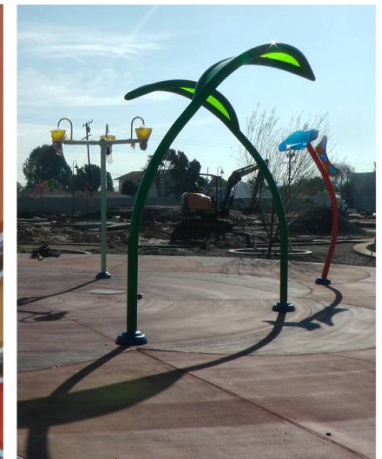
DESIGN WORKSHOP JUNE 4, 2011 @Garcia Hospital			DESIGN WORKSHOP JUNE 4, 2011 @Lopez Garcia			DESIGN WORKSHOP JUNE 13, 2011 @Troyda Pastoral			DESIGN WORKSHOP JUNE 13, 2011 @Cabrera Endicott			TOP 15 CHOICES FROM EACH WORKSHOP																																																																																																																																																																																																																																																																																																																																																																																																																																																																																																																																																																																																																																																																																																																																																																																																																																						
Id	Choice	Id	Id	Choice	Id	Id	Choice	Id	Id	Choice	Id	Id	Choice	Id																																																																																																																																																																																																																																																																																																																																																																																																																																																																																																																																																																																																																																																																																																																																																																																																																																				
1	Playground / Patio de recreo	27	Playground / Patio de recreo	27	Open Park / Lugar de agua	23	Water / Agua	10	Water / Agua	7	Water / Agua	10	Water / Agua	7	Open Park / Lugar de agua	23	Water / Agua	10	Water / Agua	7	Water / Agua	10	Water / Agua	7	Water / Agua	10	Water / Agua	7	Water / Agua	10	Water / Agua	7	Water / Agua	10	Water / Agua	7	Water / Agua	10	Water / Agua	7	Water / Agua	10	Water / Agua	7	Water / Agua	10	Water / Agua	7	Water / Agua	10	Water / Agua	7	Water / Agua	10	Water / Agua	7	Water / Agua	10	Water / Agua	7	Water / Agua	10	Water / Agua	7	Water / Agua	10	Water / Agua	7	Water / Agua	10	Water / Agua	7	Water / Agua	10	Water / Agua	7	Water / Agua	10	Water / Agua	7	Water / Agua	10	Water / Agua	7	Water / Agua	10	Water / Agua	7	Water / Agua	10	Water / Agua	7	Water / Agua	10	Water / Agua	7	Water / Agua	10	Water / Agua	7	Water / Agua	10	Water / Agua	7	Water / Agua	10	Water / Agua	7	Water / Agua	10	Water / Agua	7	Water / Agua	10	Water / Agua	7	Water / Agua	10	Water / Agua	7	Water / Agua	10	Water / Agua	7	Water / Agua	10	Water / Agua	7	Water / Agua	10	Water / Agua	7	Water / Agua	10	Water / Agua	7	Water / Agua	10	Water / Agua	7	Water / Agua	10	Water / Agua	7	Water / Agua	10	Water / Agua	7	Water / Agua	10	Water / Agua	7	Water / Agua	10	Water / Agua	7	Water / Agua	10	Water / Agua	7	Water / Agua	10	Water / Agua	7	Water / Agua	10	Water / Agua	7	Water / Agua	10	Water / Agua	7	Water / Agua	10	Water / Agua	7	Water / Agua	10	Water / Agua	7	Water / Agua	10	Water / Agua	7	Water / Agua	10	Water / Agua	7	Water / Agua	10	Water / Agua	7	Water / Agua	10	Water / Agua	7	Water / Agua	10	Water / Agua	7	Water / Agua	10	Water / Agua	7	Water / Agua	10	Water / Agua	7	Water / Agua	10	Water / Agua	7	Water / Agua	10	Water / Agua	7	Water / Agua	10	Water / Agua	7	Water / Agua	10	Water / Agua	7	Water / Agua	10	Water / Agua	7	Water / Agua	10	Water / Agua	7	Water / Agua	10	Water / Agua	7	Water / Agua	10	Water / Agua	7	Water / Agua	10	Water / Agua	7	Water / Agua	10	Water / Agua	7	Water / Agua	10	Water / Agua	7	Water / Agua	10	Water / Agua	7	Water / Agua	10	Water / Agua	7	Water / Agua	10	Water / Agua	7	Water / Agua	10	Water / Agua	7	Water / Agua	10	Water / Agua	7	Water / Agua	10	Water / Agua	7	Water / Agua	10	Water / Agua	7	Water / Agua	10	Water / Agua	7	Water / Agua	10	Water / Agua	7	Water / Agua	10	Water / Agua	7	Water / Agua	10	Water / Agua	7	Water / Agua	10	Water / Agua	7	Water / Agua	10	Water / Agua	7	Water / Agua	10	Water / Agua	7	Water / Agua	10	Water / Agua	7	Water / Agua	10	Water / Agua	7	Water / Agua	10	Water / Agua	7	Water / Agua	10	Water / Agua	7	Water / Agua	10	Water / Agua	7	Water / Agua	10	Water / Agua	7	Water / Agua	10	Water / Agua	7	Water / Agua	10	Water / Agua	7	Water / Agua	10	Water / Agua	7	Water / Agua	10	Water / Agua	7	Water / Agua	10	Water / Agua	7	Water / Agua	10	Water / Agua	7	Water / Agua	10	Water / Agua	7	Water / Agua	10	Water / Agua	7	Water / Agua	10	Water / Agua	7	Water / Agua	10	Water / Agua	7	Water / Agua	10	Water / Agua	7	Water / Agua	10	Water / Agua	7	Water / Agua	10	Water / Agua	7	Water / Agua	10	Water / Agua	7	Water / Agua	10	Water / Agua	7	Water / Agua	10	Water / Agua	7	Water / Agua	10	Water / Agua	7	Water / Agua	10	Water / Agua	7	Water / Agua	10	Water / Agua	7	Water / Agua	10	Water / Agua	7	Water / Agua	10	Water / Agua	7	Water / Agua	10	Water / Agua	7	Water / Agua	10	Water / Agua	7	Water / Agua	10	Water / Agua	7	Water / Agua	10	Water / Agua	7	Water / Agua	10	Water / Agua	7	Water / Agua	10	Water / Agua	7	Water / Agua	10	Water / Agua	7	Water / Agua	10	Water / Agua	7	Water / Agua	10	Water / Agua	7	Water / Agua	10	Water / Agua	7	Water / Agua	10	Water / Agua	7	Water / Agua	10	Water / Agua	7	Water / Agua	10	Water / Agua	7	Water / Agua	10	Water / Agua	7	Water / Agua	10	Water / Agua	7	Water / Agua	10	Water / Agua	7	Water / Agua	10	Water / Agua	7	Water / Agua	10	Water / Agua	7	Water / Agua	10	Water / Agua	7	Water / Agua	10	Water / Agua	7	Water / Agua	10	Water / Agua	7	Water / Agua	10	Water / Agua	7	Water / Agua	10	Water / Agua	7	Water / Agua	10	Water / Agua	7	Water / Agua	10	Water / Agua	7	Water / Agua	10	Water / Agua	7	Water / Agua	10	Water / Agua	7	Water / Agua	10	Water / Agua	7	Water / Agua	10	Water / Agua	7	Water / Agua	10	Water / Agua	7	Water / Agua	10	Water / Agua	7	Water / Agua	10	Water / Agua	7	Water / Agua	10	Water / Agua	7	Water / Agua	10	Water / Agua	7	Water / Agua	10	Water / Agua	7	Water / Agua	10	Water / Agua	7	Water / Agua	10	Water / Agua	7	Water / Agua	10	Water / Agua	7	Water / Agua	10	Water / Agua	7	Water / Agua	10	Water / Agua	7	Water / Agua	10	Water / Agua	7	Water / Agua	10	Water / Agua	7	Water / Agua	10	Water / Agua	7	Water / Agua	10	Water / Agua	7	Water / Agua	10	Water / Agua	7	Water / Agua	10	Water / Agua	7	Water / Agua	10	Water / Agua	7	Water / Agua	10	Water / Agua	7	Water / Agua	10	Water / Agua	7	Water / Agua	10	Water / Agua	7	Water / Agua	10	Water / Agua	7	Water / Agua	10	Water / Agua	7	Water / Agua	10	Water / Agua	7	Water / Agua	10	Water / Agua	7	Water / Agua	10	Water / Agua	7	Water / Agua	10	Water / Agua	7	Water / Agua	10	Water / Agua	7	Water / Agua	10	Water / Agua	7	Water / Agua	10	Water / Agua	7	Water / Agua	10	Water / Agua	7	Water / Agua	10	Water / Agua	7	Water / Agua	10	Water / Agua	7	Water / Agua	10	Water / Agua	7	Water / Agua	10	Water / Agua	7	Water / Agua	10	Water / Agua	7	Water / Agua	10	Water / Agua	7	Water / Agua	10	Water / Agua	7	Water / Agua	10	Water / Agua	7	Water / Agua	10	Water / Agua	7	Water / Agua	10	Water / Agua	7	Water / Agua	10	Water / Agua	7	Water / Agua	10	Water / Agua	7	Water / Agua	10	Water / Agua	7	Water / Agua	10	Water / Agua	7	Water / Agua	10	Water / Agua	7	Water / Agua	10	Water / Agua	7	Water / Agua	10	Water / Agua	7	Water / Agua	10	Water / Agua	7	Water / Agua	10	Water / Agua	7	Water / Agua	10	Water / Agua	7	Water / Agua	10	Water / Agua	7	Water / Agua	10	Water / Agua	7	Water / Agua	10	Water / Agua	7	Water / Agua	10	Water / Agua	7	Water / Agua	10	Water / Agua	7	Water / Agua	10	Water / Agua	7	Water / Agua	10	Water / Agua	7	Water / Agua	10	Water / Agua	7	Water / Agua	10	Water / Agua	7	Water / Agua	10	Water / Agua	7	Water / Agua	10	Water / Agua	7	Water / Agua	10	Water / Agua	7	Water / Agua	10	Water / Agua	7	Water / Agua	10	Water / Agua	7	Water / Agua	10	Water / Agua	7	Water / Agua	10	Water / Agua	7	Water / Agua	10	Water / Agua	7	Water / Agua	10	Water / Agua	7	Water / Agua	10	Water / Agua	7	Water / Agua	10	Water / Agua	7	Water / Agua	1



فراشة

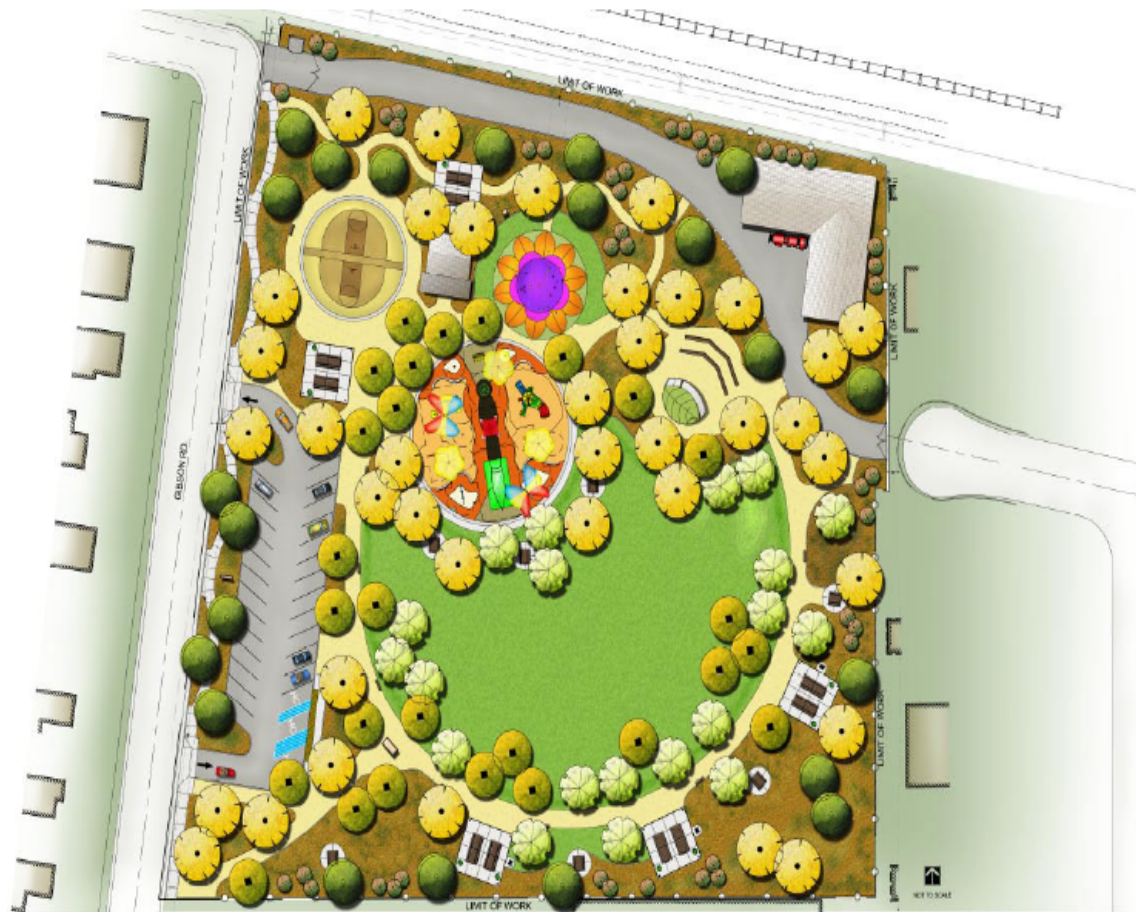
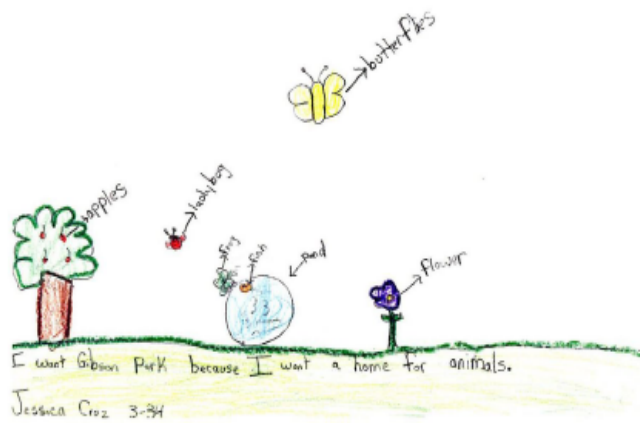
butterfly

蝶



COMMUNITY BASED DESIGN PROCESS

The fluttering of a butterfly's wings can effect climate changes on the other side of the planet.





Pollinators of Flowers

Butterflies can travel longer distances, ensuring coverage of equal amounts of flowering plants in a larger area. Butterflies pollinate a wide variety of flowers that open during the day. They frequent big, beautiful, brightly colored blooms. Butterflies have superior color vision, sensing more "wavelengths" than either humans or bees.

IN DANGER OF EXTINCTION

The numbers of these pollinators are being reduced in alarming rates by habitat loss, through urbanization and the overuse of pesticides.

COLLECTING POLLEN

Butterflies like to perch on larger flower heads when they hunt nectar, collecting pollen on their legs and body as they search for food.



The Amazing Migration

Monarchs are especially noted for their lengthy annual migration, which can take up to three generations to complete. The migration cycle of the monarch presents numerous obstacles in which many lose their lives.



The migrational pattern presently observed originated in the distant past when the monarchs were following the milkweed species which were spreading westward.

ENDANGERMENT

Rising climate changes threaten to disrupt this annual migratory pattern on which the Monarch's existence depends by affecting weather conditions in both wintering and breeding grounds. Colder and wetter winters could be lethal; hotter, drier summers could shift suitable habitats north.



Rio Hondo







The Green Collar Environmental Certification Program

WORKING IN THE WATERSHED,
be part of the



Apply through:
Felicia Vann
Recruitment and Training
Los Angeles Conservation Corps
3655 South Grand Avenue, Suite 280
Los Angeles, CA 90007
Tel. 213.747.1872

OR

Fill out an application and mail to:

Amigos de los Rios
3244 Santa Anita Ave
Altadena, CA 91001

Applications are available online at:
www.amigosdelosrios.org

Term Dates:

1st Term 11.1.2006 - 1.30.2007

2nd Term 3.12.2007 - 6.12.2007

* LIMITED AVAILABILITY

Information will be provided on
continuing education and job
opportunity in the environmental sector

© Amigos de los Rios 2006, all rights reserved

Offers exposure to
a broad spectrum of
professions in the
environmental sector

TRAINING PROVIDED IN
Watershed Management
Urban Planning
Park Design
Public Art
Park Construction
Community Outreach
Park Maintenance
Computer Training



The Green Collar Program
is funded with a grant from the
United States Department of Labor.
Priority given to veterans and
spouses of veterans.



Supported by

Southern California Edison
Metropolitan Water District
Congresswoman Hilda Solis
Upper San Gabriel Valley Water District

A special thanks to the following California Conservation Corps, Los Angeles Conservation Corps, and San Gabriel Valley Conservation Corps Members who have built Lashbrook Park for the benefit of current and future generations:

Adrian Dominguez	Andres Garcia	Chris Hernandez	Eric Guerrero	Hilario Riera	Jane Salas	Larry Phibbs	Wesley Rios	Yolky Trujillo	Yovani Horta
Adrian Hernandez	Angel Davis	Christian Flores	Erin Suarez	Jessal Davis	Jessal Davis	Leslie Newman	Nicholas Rios	Rodolfo Rios	Thomas Rodriguez
Adriana Castaneda	Anthony Delgado	Christian Pina	Felipe Salas	James Martinez	Jose Duran	Leo May	Nicole Salas	Raula Espinoza	Thomas Pineda
Albert Dukes	Anthony Pineda	Christina Chaves	Fernando Davila	Jimmy Hays	Jose Gonzalez	Leo Aguilar	Orlando Rios	Rafael Chaves	Timothy Rios
Alfredo Corona	Arnel Torres Jr	Christopher Zancos	Fernando Ruiz	Jose Galindo	Jose Lopez	Orlando Duran	Peter Thurner	Salvador Garcia	Ulysses Gallegos
Alan Carmona	Kyle Martinez	Daniel Gomez	Gary Snyder	Jose Villan	Jose Lopez	Orlando Chaves	Phillip Zancos	Sean Chaves	Walter Santiago
Alfredo Gonzalez	Brandon Taylor	Daniel Lopez	Gary Salas	Jose Villan	Jose Lopez	Orlando Chaves	Rafael Martinez	Sebastian Torres	William Gonzalez
Alfredo Jimenez	Brice Pineda	Daniel Pineda	Colleen Duran	Jose Villan	Jose Lopez	Orlando Chaves	Rafael Martinez	Sebastian Torres	William Gonzalez
Andre De La Cruz	Camacho Gomez	Daniel Pineda	Colleen Duran	Jose Villan	Jose Lopez	Orlando Chaves	Rafael Martinez	Sebastian Torres	William Gonzalez
Andres Garcia	Caplan Rios	Daniel Pineda	Colleen Duran	Jose Villan	Jose Lopez	Orlando Chaves	Rafael Martinez	Sebastian Torres	William Gonzalez
Andres Hernandez	Carla Garcia	Eric Salas	Colleen Duran	Jose Villan	Jose Lopez	Orlando Chaves	Rafael Martinez	Sebastian Torres	William Gonzalez

Habitat Creation/Biodiversity



Re- Vegetation of Asphalt Quilt – Global Climate Action/Heat Island Mitigation

> lashbrook park



benefits & opportunities

> Water Conservation



> Play & Exercise Areas



> Health



> Beauty



Lashbrook Park

Funder: Supervisor Gloria Molina, Prop A & RMC
Project Team: Bob Perry, San Gabriel Valley, Los Angeles County
and California Conservation Corps, Storm Water Solutions
Consultant 3, cost analysis; Consultant 4, signage and graphics.

Lashbrook Park

El Monte, California





Emerald Necklace Coalition

Member Agencies



Emerald Necklace Region



Local Cities

- City of Azusa
- City of Bell
- City of Downey
- City of Duarte
- City of Irwindale
- City of Baldwin Park
- City of El Monte
- City of South El Monte
- City of San Gabriel
- City of South Gate
- City of Whittier
- City of Monrovia
- City of Montebello
- City of La Puente
- Gateway Authority:
– 20 Cities

Unincorporated Areas

- Hacienda Heights Homeowners' Association
- Workman Mill Road Homeowners' Association

State & County Agencies

- Rivers & Mountains Conservancy
- Los Angeles County Board of Supervisors

Community Based Organizations

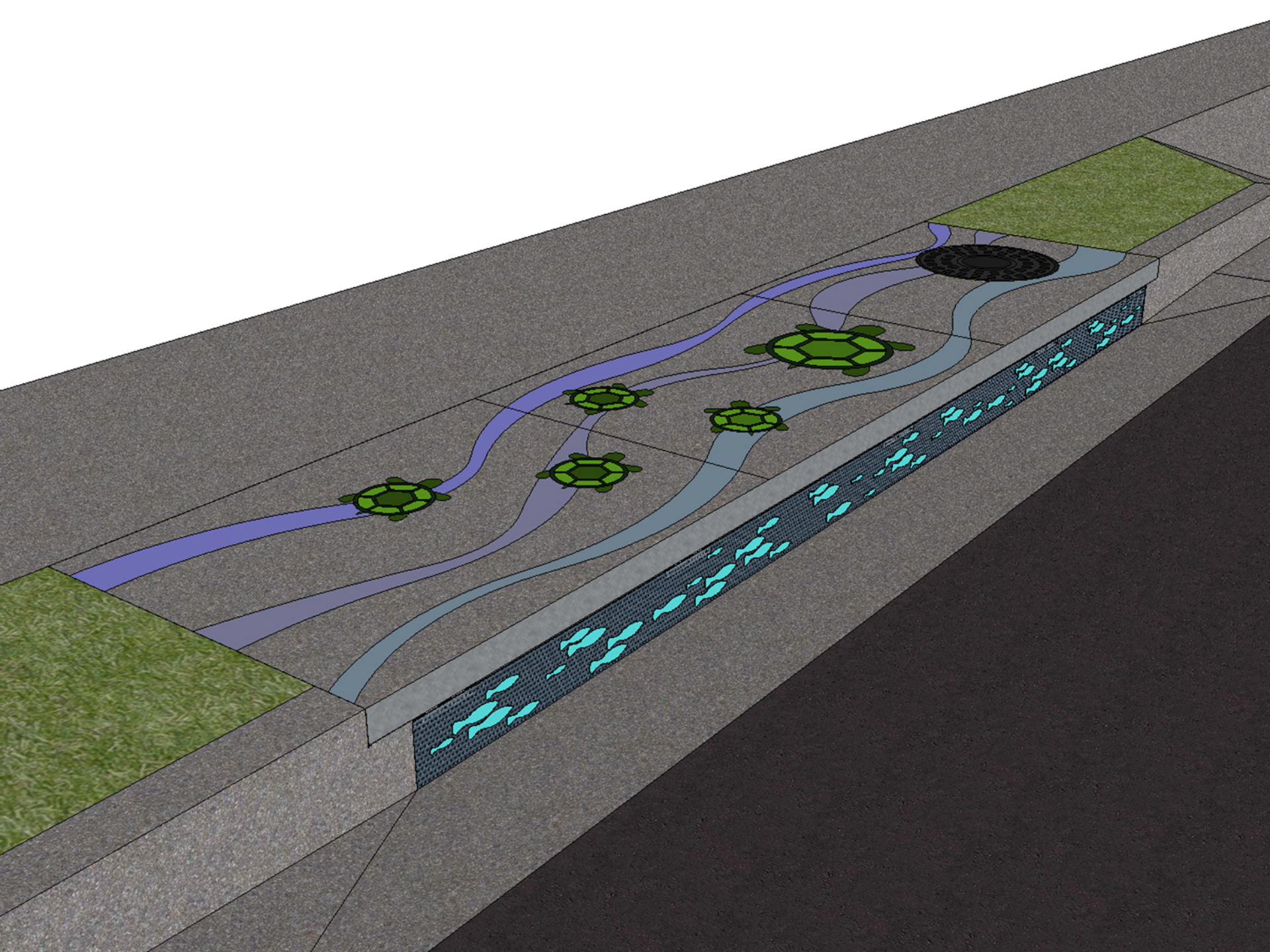
- Charro Equestrian Joint Council
- Park El Monte Improvement Association

School Districts

- El Rancho Unified - Pico River
- El Monte Union
- El Monte City
- Rosemead
- Mountain View



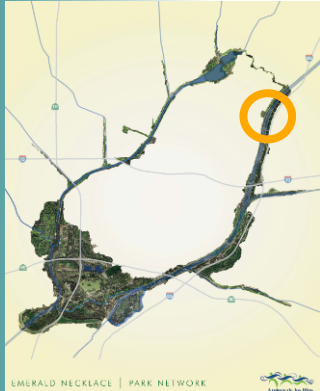
Green Infrastructure – Multi Modal Learning – Green Civitas



Durfee/Thompson School

PASSIVE ACTIVE INTERLACE

- State-of-the-art: Sports Field and Perimeter Nature Trail
- Outdoor Interpretive Area / Reconnect with Nature



City of El Monte

*Congressional Appropriation- Congresswoman, Hilda Solis partial funding

school joint use trail

> Outdoor Classroom



> Therapy Area

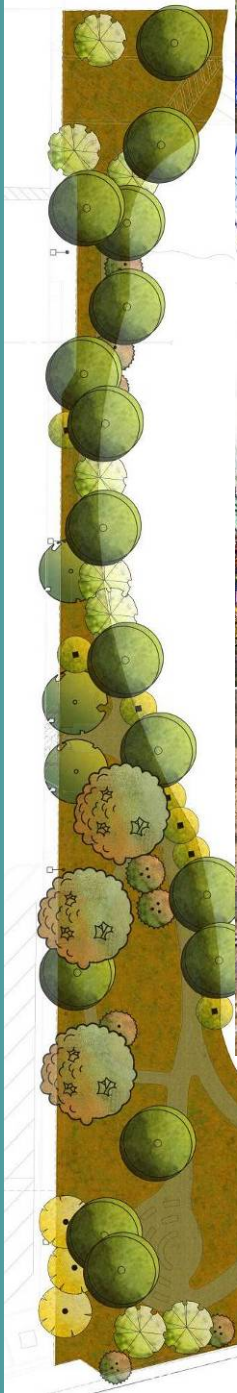


> Educational Signage



> Nature Trail





Main - tenir

- Hand = To Hold





VOLUNTEER for our PARK RESTORATION EVENTS!

SPEND SOME TIME OUTDOORS!

We will be caring for native plants & habitat restoration areas and for park amenities & interpretive signage.

We will supply the materials, work gloves and tools.

ALL YOU NEED TO BRING IS ELBOW GREASE!



SUPPORT THE EMERALD NECKLACE!



December 17, 2011

Durfee Thompson School
12233 Star St. El Monte, CA 91732

January 7, 2012

Peck Water Conservation Park
5401 N. Peck Rd Arcadia, CA 91006

January 14, 2012

Columbia Elementary School
3400 California Ave, El Monte, CA 91731

February 4, 2012

Peck Water Conservation Park
5401 N. Peck Rd Arcadia, CA 91006

February 18, 2012

Rio Vista Park
4275 RAnger Ave, El Monte, CA 91732

March 3, 2012

Peck Water Conservation Park
5401 N. Peck Rd Arcadia, CA 91006

March 17, 2012

Lashbrook Park
3141 Lashbrook Ave, El Monte, CA 91733



COMMUNITY ENGAGEMENT & STEWARDSHIP
www.facebook.com/emeraldnecklace

GREEN INFRASTRUCTURE



- **Multi - Jurisdictional - Re-purpose & Adaptive Re-use**
- **Public Health & Environmental Health**
- **Water & Air Resources Protection – AB375**
- **Urban “Green Collar Economy”/Project Implementation**
- **Recreation Opportunities in Underserved Communities**
- **Urban Biodiversity Protection & Habitat Creation**
- **Access to Nature/Multi Modal Learning – Cultural History**
- **Embody Identity as a State - Local Natural & Cultural Heritage**
- **Alternative “Non Vehicular” Transportation**
- **Energy Savings**

Global Climate Action/Heat Island Mitigation



**Claire Robinson,
President**

**Amigos de los Rios –
The Emerald
Necklace Group**

**[claire@amigosdelos
rios.org](mailto:claire@amigosdelosrios.org)**

626 676 5027