

**SECTION
J**

SOLID WASTE MANAGEMENT UNITS

**Siemens Water Technologies Corp.
2523 Mutahar Street
Parker, Arizona 85344**

**February 2007
Revision 0**

TABLE OF CONTENTS

<u>Section</u>	<u>Page</u>
J.1 CHARACTERIZATION OF THE SOLID WASTE MANAGEMENT UNITS	J-1
J.2 RELEASES.....	J-2

TABLES

<u>Table No.</u>	<u>Page</u>
J-1 SOLID WASTE MANAGEMENT UNIT IDENTIFICATION.....	J-3

FIGURES

<u>Figure No.</u>	<u>Follows Page</u>
J-1 SOLID WASTE MANAGEMENT UNIT LOCATIONS	J-7
J-2 SOLID WASTE MANAGEMENT UNIT LOCATIONS	J-7
J-3 SOLID WASTE MANAGEMENT UNIT LOCATIONS	J-7

SOLID WASTE MANAGEMENT UNITS

This section identifies each of the known solid waste management units at the facility and provides the information required by 270.14(d)(1) and (2). The EPA has initiated a RCRA Facility Assessment (RFA), however as of the time of submittal of this Part B Permit Application, that assessment is on-going, and no results are available. Therefore, all information is provided based on facility knowledge of the past and current operations, and draft information received from EPA.

J.1 Characterization of the Solid Waste Management Units

The facility has identified three operating areas on the facility containing solid waste management units and one past operating area containing solid waste management units at the facility as required by 270.14(d)(1). The areas containing solid waste management units are:

- 1) The container storage area,
- 2) The storage tank area, consisting of tanks T-1, T-2, T-5, T-6, and T-18,
- 3) The carbon reactivation furnace and associated emission control equipment (RF-2), and
- 4) The inactive carbon reactivation furnace and associated emission control equipment (RF-1) as well as T-8.

Within these areas, a list of SWMUs has been compiled for inclusion with this Part B Permit Application. Table J-1 lists the identified SWMUs and provides the following information for each identified SWMU. Following completion of the Facility Assessment, the following information pertaining to these solid waste management units will be assembled:

- 1) The designation of each type of unit (name, description);
- 2) The general dimensions and structural description of each unit;
- 3) The date each unit was first operated; and
- 4) Specification of all wastes that have been managed in each unit, to the extent available.

The location of each solid waste management unit is shown on a series of drawings designated as Figures J-1 through J-3.

J.2 Releases

Any leaks, drips, or spills from any of the solid waste management units identified in Section J-1, above, are routinely cleaned up as soon as practical and the area decontaminated to remove any hazardous wastes or hazardous waste constituents. The facility has experienced four reportable releases of hazardous wastes or hazardous waste constituents from the solid waste management units, as follows:

Nov 10, 1994 – Facility Lift Station Overflow – Reported to NRC, CRIT, LEPC – overflow caused by a power outage.

April 17, 1995 - Facility Lift Station Overflow – Reported to NRC, CRIT, LEPC – overflow caused by power outage.

February 15, 1996 - Facility discharge line was accidentally cut by Southwest Gas contractor relocating natural gas line - Reported to NRC, CRIT, LEPC

September 26, 1998 – Spill of recycle water from a trailer outside the facility gate - Reported to NRC, CRIT, LEPC.

For each release, a complete investigation and report has been compiled and is kept at the facility. The following information, at a minimum, is recorded for any release from a solid waste management unit identified in Section J.1 above:

- 1) Date, type, quantity, and nature of any release;
- 2) Groundwater monitoring and other analytical data;
- 3) Physical evidence of stressed vegetation;
- 4) Historical evidence of any releases;
- 5) Any state, federal, or local enforcement action to address releases;
- 6) Any public citizen complaints that indicate a release; and
- 7) Any other information showing the migration of a release.

TABLE J-1. SOLID WASTE MANAGEMENT UNIT IDENTIFICATION

No.	SWMU Type/Designation	Location	General Dimensions and Structural Description	Date Unit was First Operated	Identification of Wastes Managed in Unit	Releases from Unit
1	Spent carbon reactivation furnace - RF-1 and Associated Equipment (Dewater screw, Weigh Belt)	South of RF-2	14'-2" H 9'-3" OD Four hearths	August 1992	Spent activated carbon. See Part A Application for list of applicable waste codes	None
2	Spent carbon reactivation furnace RF-2 and Associated Equipment (Dewater Screw, Weigh Belt)	East of warehouse	See Appendix X	July 1996	Spent activated carbon. See Part A Application for list of applicable waste codes	None
3	Spent carbon unloading hopper H1	North end of facility on containment	5000 lb capacity; mild steel	July 1996	Spent activated carbon. See Part A Application for list of applicable waste codes	None
4	Spent carbon unloading hopper H2	Inside warehouse facing east wall	500 lb capacity; mild steel	August 1992	Spent activated carbon. See Part A Application for list of applicable waste codes	None
5	Spent carbon slurry and recycle water transfer system	East of the warehouse on containment	4" pipes hopper to tank; 3" pipes T-tank to furnace feed tank; 300-series SS	August 1992	Spent activated carbon. See Part A Application for list of applicable waste codes	None

TABLE J-1. SOLID WASTE MANAGEMENT UNIT IDENTIFICATION

No.	SWMU Type/Designation	Location	General Dimensions and Structural Description	Date Unit was First Operated	Identification of Wastes Managed in Unit	Releases from Unit
6	Spent carbon storage warehouse	Inside warehouse	Approx 80' x 80' concrete/metal	August 1992	Spent activated carbon. See Part A Application for list of applicable waste codes	None
7	Spent carbon unloading area	North area of facility	Approx 44' x 152' concrete	August 1992	Spent activated carbon. See Part A Application for list of applicable waste codes	None
8	Spent carbon slurry storage tank, T-1, T-2, T-5, T-6 and Ancillary Equipment	East of warehouse on containment	See Appendix IX	August 1992	Spent activated carbon. See Part A Application for list of applicable waste codes	None
9	T-8 and Ancillary Equipment	RF-1 Structure	905 gal 300-series SS	August 1992	Spent activated carbon. See Part A Application for list of applicable waste codes	None
10	T-18 and Ancillary Equipment	RF-2 structure	5000 gal 300-series SS	July 1996	Spent activated carbon. See Part A Application for list of applicable waste codes	None

TABLE J-1. SOLID WASTE MANAGEMENT UNIT IDENTIFICATION

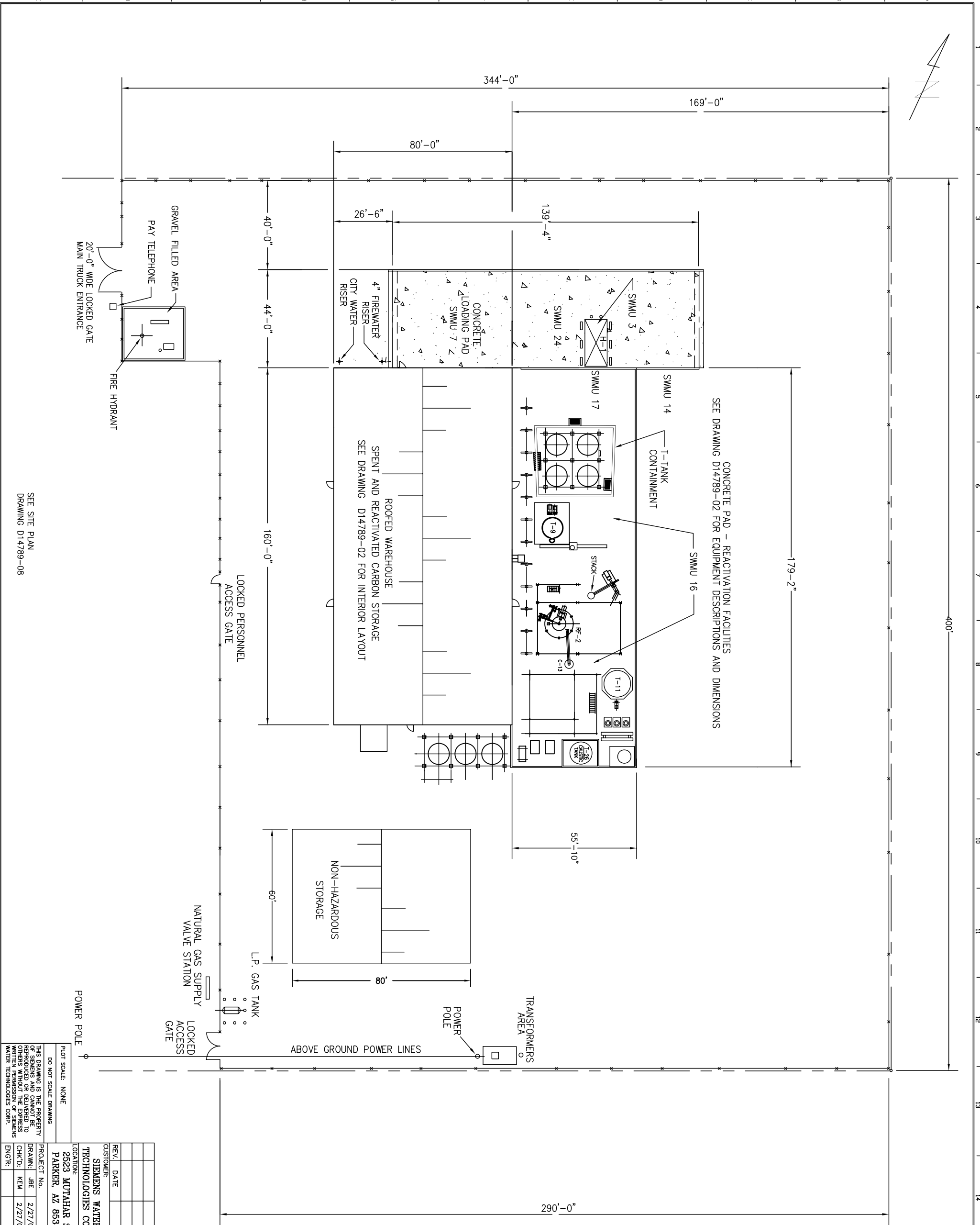
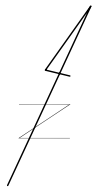
No.	SWMU Type/Designation	Location	General Dimensions and Structural Description	Date Unit was First Operated	Identification of Wastes Managed in Unit	Releases from Unit
11	Recycled motive water storage tank, T-9	East of warehouse on containment	10,500 gal 300-series SS	August 1992	Spent activated carbon. See Part A Application for list of applicable waste codes	None
12	Wastewater storage tank, T-11 System	East of the warehouse and south of RF -2	10' Dia x 20' H; Approx 12,000 gal fiberglass	August 1992	Spent activated carbon. See Part A Application for list of applicable waste codes	None
13	RF-2 scrubber water equalization tank, T-19	Under RF-2 Structure	Approx 1000 gal fiberglass	July 1996	Spent activated carbon. See Part A Application for list of applicable waste codes	None
14	Hazardous waste debris bin	North of warehouse on containment by H-1	Approx 20 cu yd, mild steel	August 1992	Spent activated carbon. See Part A Application for list of applicable waste codes	None
15	Spent carbon storage warehouse grated trenches and sump	Warehouse in containment area	Trench 3'-4" square; U-drain 50' L x 16" W; Cross drains 40' x 16"; concrete	August 1992	Spent activated carbon. See Part A Application for list of applicable waste codes	None

TABLE J-1. SOLID WASTE MANAGEMENT UNIT IDENTIFICATION

No.	SWMU Type/Designation	Location	General Dimensions and Structural Description	Date Unit was First Operated	Identification of Wastes Managed in Unit	Releases from Unit
16	Bermed containment in process area	East of Warehouse	Approx 180' x 55'; concrete	August 1992	Spent activated carbon. See Part A Application for list of applicable waste codes	None
17	Sump by H-1	South of H-1	3'-4" square; concrete	July 1996	Spent activated carbon. See Part A Application for list of applicable waste codes	None
18	Sump by storage tank, T-9	East of warehouse in between T-9 and RF-2	3'-4" square; U-drain 30' x 16"; concrete	August 1992	Spent activated carbon. See Part A Application for list of applicable waste codes	None
19	Sump by cooling screw under Venturi scrubber tank	East of warehouse beside RF-2	3'-4" square; concrete	July 1996	Spent activated carbon. See Part A Application for list of applicable waste codes	None
20	Wastewater conveyance piping to wastewater treatment tank	East of RF-2 structure	3" PVC piping	August 1992	Spent activated carbon. See Part A Application for list of applicable waste codes	None

TABLE J-1. SOLID WASTE MANAGEMENT UNIT IDENTIFICATION

No.	SWMU Type/Designation	Location	General Dimensions and Structural Description	Date Unit was First Operated	Identification of Wastes Managed in Unit	Releases from Unit
21	Wastewater lift station and piping system (old)	At the end of access road to plant. Old piping from Tank T-11 to the Lift Station	Approx 15' H x 5" Dia; mild steel, SS, and fiberglass. Ductile iron Piping	August 1992	Spent activated carbon. See Part A Application for list of applicable waste codes	See Section J.2
22	New Facility Discharge Piping System	New piping bypasses Lift Station to POTW	3" PVC	February 1996	Spent activated carbon. See Part A Application for list of applicable waste codes	See Section J.2
23	Carbon adsorber - PV1000	North of Containment Pad for Storage Tanks	1000 lb carbon capacity; mild steel. New canisters substituted.	August 1992	Spent activated carbon. See Part A Application for list of applicable waste codes	None
24	Hopper containment pad	Outside H-1 structure	Approx 60' x 44'; concrete	July 1996	Spent activated carbon. See Part A Application for list of applicable waste codes	None
25	WWTP	Inside warehouse	Fiberglass, mild steel modular water treatment system. Separate containment.	October 2003	Spent activated carbon. See Part A Application for list of applicable waste codes	None



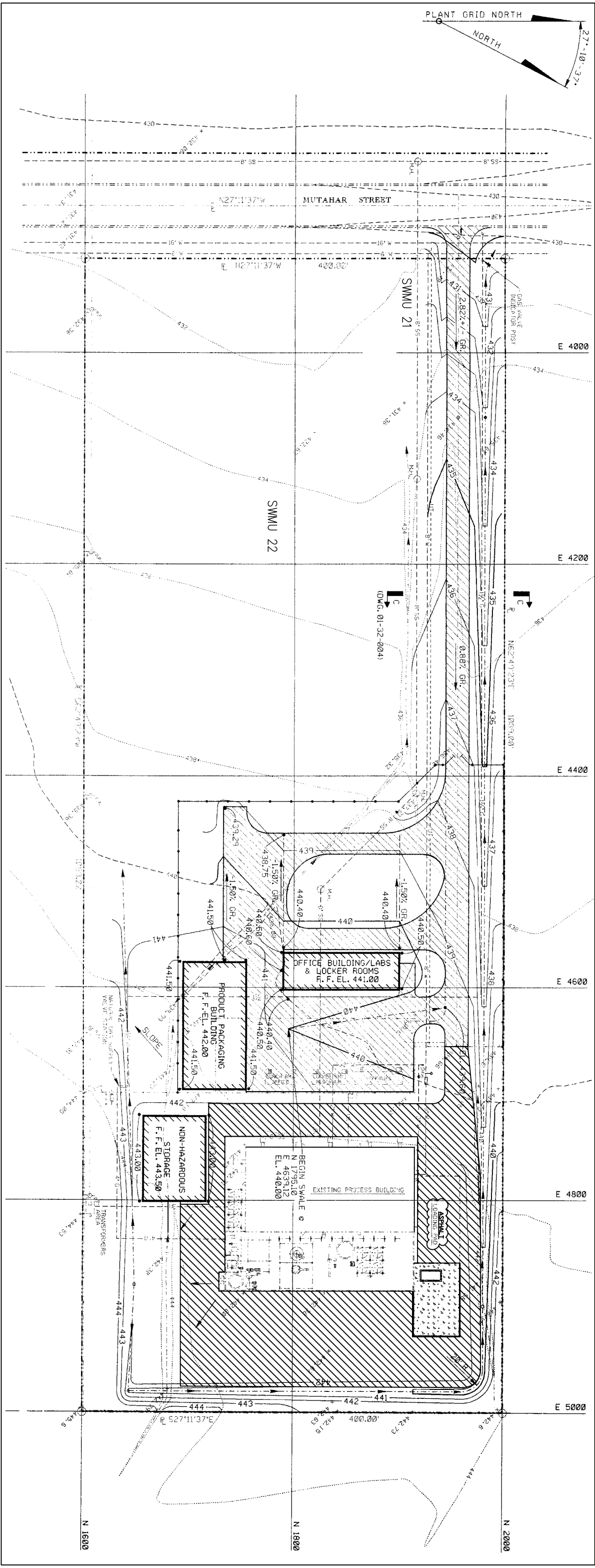
SMMU IDENTIFICATION LIST:

- RF-1 AND ASSOCIATED EQUIPMENT
- RF-2 AND ASSOCIATED EQUIPMENT
- H-1 HOPPER
- H-2 HOPPER
- RECYCLE WATER TRANSFER SYSTEM
- SPENT CARBON STORAGE WAREHOUSE
- SPENT CARBON UNLOADING AREA
- T-1, T-2, T-5, T-6 AND ANCILLARY EQUIPMENT
- T-8 AND ANCILLARY EQUIPMENT
- T-18 AND ANCILLARY EQUIPMENT
- RECYCLED WATER T-9
- T-11 WASTEWATER SYSTEM
- T-19
- HAZARDOUS WASTE DEBRIS BIN
- GRATED TRENCHES AND SLUMP
- SLUMP BY H-1
- SLUMP BY T-9
- SLUMP BY COOLING SCREEN
- WASTE WATER PUMP AND WWT TANK (OLD)
- WASTE WATER PUMP AND PIPING SYSTEM
- FACILITY DISCHARGE PIPING SYSTEM
- CARBON ADSORBER
- H-1 BERMED UNLOADING PAD
- WMP

NOTES:

- THIS DRAWING INCLUDES COMPONENTS OF THE FACILITY THAT ARE EXEMPT FROM PERMITTING UNDER VARIOUS PROVISIONS OF RCRA. DATA RELATED TO THESE COMPONENTS IS PROVIDED FOR INFORMATIONAL PURPOSES AND EASE OF REVIEW ONLY, AND THEY ARE NOT INTENDED TO BECOME REGULATED COMPONENTS OF THE HAZARDOUS WASTE FACILITY.

--	--	--	--	--	--	--	--	--	--	--	--	--	--	--	--	--	--	--	--	--	--	--	--	--	--	--	--	--	--	--	--	--	--	--	--	--	--	--	--	--	--	--	--	--	--	--	--	--	--	--	--	--	--	--	--	--	--	--	--	--	--	--	--	--	--	--	--	--	--	--	--	--	--	--	--	--	--	--	--	--	--	--	--	--	--	--	--	--	--	--	--	--	--	--	--	--	--	--	--	--	--	--	--	--	--	--	--	--	--	--	--	--	--	--	--	--	--	--	--	--	--	--	--	--	--	--	--	--	--	--	--	--	--	--	--	--	--	--	--	--	--	--	--	--	--	--	--	--	--	--	--	--	--	--	--	--	--	--	--	--	--	--	--	--	--	--	--	--	--	--	--	--	--	--	--	--	--	--	--	--	--	--	--	--	--	--	--	--	--	--	--	--	--	--	--	--	--	--	--	--	--	--	--	--	--	--	--	--	--	--	--	--	--	--	--	--	--	--	--	--	--	--	--	--	--	--	--	--	--	--	--	--	--	--	--	--	--	--	--	--	--	--	--	--	--	--	--	--	--	--	--	--	--	--	--	--	--	--	--	--	--	--	--	--	--	--	--	--	--	--	--	--	--	--	--	--	--	--	--	--	--	--	--	--	--	--	--	--	--	--	--	--	--	--	--	--	--	--	--	--	--	--	--	--	--	--	--	--	--	--	--	--	--	--	--	--	--	--	--	--	--	--	--	--	--	--	--	--	--	--	--	--	--	--	--	--	--	--	--	--	--	--	--	--	--	--	--	--	--	--	--	--	--	--	--	--	--	--	--	--	--	--	--	--	--	--	--	--	--	--	--	--	--	--	--	--	--	--	--	--	--	--	--	--	--	--	--	--	--	--	--	--	--	--	--	--	--	--	--	--	--	--	--	--	--	--	--	--	--	--	--	--	--	--	--	--	--	--	--	--	--	--	--	--	--	--	--	--	--	--	--	--	--	--	--	--	--	--	--	--	--	--	--	--	--	--	--	--	--	--	--	--	--	--	--	--	--	--	--	--	--	--	--	--	--	--	--	--	--	--	--	--	--	--	--	--	--	--	--	--	--	--	--	--	--	--	--	--	--	--	--	--	--	--	--	--	--	--	--	--	--	--	--	--	--	--	--	--	--	--	--	--	--	--	--	--	--	--	--	--	--	--	--	--	--	--	--	--	--	--	--	--	--	--	--	--	--	--	--	--	--	--	--	--	--	--	--	--	--	--	--	--	--	--	--	--	--	--	--	--	--	--	--	--	--	--	--	--	--	--	--	--	--	--	--	--	--	--	--	--	--	--	--	--	--	--	--	--	--	--	--	--	--	--	--	--	--	--	--	--	--	--	--	--	--	--	--	--	--	--	--	--	--	--	--	--	--	--	--	--	--	--	--	--	--	--	--	--	--	--	--	--	--	--	--	--	--	--	--	--	--	--	--	--	--	--	--	--	--	--	--	--	--	--	--	--	--	--	--	--	--	--	--	--	--	--	--	--	--	--	--	--	--	--	--	--	--	--	--	--	--	--	--	--	--	--	--	--	--	--	--	--	--	--	--	--	--	--	--	--	--	--	--	--	--	--	--	--	--	--	--	--	--	--	--	--	--	--	--	--	--	--	--	--	--	--	--	--	--	--	--	--	--	--	--	--	--	--	--	--	--	--	--	--	--	--	--	--	--	--	--	--	--	--	--	--	--	--	--	--	--	--	--	--	--	--	--	--	--	--	--	--	--	--	--	--	--	--	--	--	--	--	--	--	--	--	--	--	--	--	--	--	--	--	--	--	--	--	--	--	--	--	--	--	--	--	--	--	--	--	--	--	--	--	--	--	--	--	--	--	--	--	--	--	--	--	--	--	--	--	--	--	--	--	--	--	--	--	--	--	--	--	--	--	--	--	--	--	--	--	--	--	--	--	--	--	--	--	--	--	--	--	--	--	--	--	--	--	--	--	--	--	--	--	--	--	--	--	--	--	--	--	--	--	--	--	--	--	--	--	--	--	--	--	--	--	--	--	--	--	--	--	--	--	--	--	--	--	--	--	--	--	--	--	--	--	--	--	--	--	--	--	--	--	--	--	--	--	--	--	--	--	--	--	--	--	--	--	--	--	--	--	--	--	--	--	--	--	--	--	--	--	--	--	--	--	--	--	--	--	--	--	--	--	--	--	--	--	--	--	--	--	--	--	--	--	--	--	--	--	--	--	--	--	--	--	--	--	--	--	--	--	--	--	--	--	--	--	--	--	--	--	--	--	--	--	--	--	--	--	--	--	--	--	--	--	--	--	--	--	--	--	--	--	--	--	--	--	--	--	--	--	--	--	--	--	--	--	--	--	--	--	--	--	--	--	--	--	--	--	--	--	--	--	--	--	--	--	--	--	--	--	--	--	--	--	--	--	--	--	--	--	--	--	--	--	--	--	--	--	--	--	--	--	--	--	--	--	--	--	--	--	--	--	--	--	--	--	--	--	--	--	--	--	--	--	--	--	--	--	--	--	--	--	--	--	--	--	--	--	--	--	--	--	--	--	--	--	--	--	--	--	--	--	--	--	--	--	--	--	--	--	--	--	--	--	--	--	--	--	--	--	--	--	--	--	--	--	--	--	--	--	--	--	--	--	--	--	--	--	--	--	--	--	--	--	--	--	--	--	--	--	--	--	--	--	--	--	--	--	--	--	--	--	--	--	--	--	--	--	--	--	--	--	--	--	--	--	--	--	--	--	--	--	--	--	--	--	--	--	--	--	--	--	--	--	--	--	--	--	--	--	--	--	--	--	--	--	--	--	--	--	--	--	--	--	--	--	--	--	--	--	--	--	--	--	--	--	--	--	--	--	--	--	--	--	--	--	--	--	--	--	--	--	--	--	--	--	--	--	--	--	--	--	--	--	--	--	--	--	--	--	--	--	--	--	--	--	--	--	--	--	--	--	--	--	--	--	--	--	--	--	--	--	--	--	--	--	--	--	--	--	--	--	--	--	--	--	--	--	--	--	--	--	--	--	--	--	--	--	--	--	--	--	--	--	--	--	--	--	--	--	--	--	--	--	--	--	--	--	--	--	--	--	--	--	--	--	--	--	--	--	--	--	--	--	--	--	--	--	--	--	--	--	--	--	--	--	--	--	--	--	--	--	--	--	--	--	--	--	--	--	--	--	--	--	--	--	--	--	--	--	--	--	--	--	--	--	--	--	--	--	--	--	--	--	--	--	--	--	--	--	--	--	--	--	--	--	--	--	--	--	--	--	--	--	--	--	--	--	--	--	--	--	--	--	--	--	--	--	--	--	--	--	--	--	--	--	--	--	--	--	--	--	--	--	--	--	--	--	--	--	--	--	--	--	--	--	--	--	--	--	--	--	--	--	--	--	--	--	--	--	--	--	--	--	--	--	--	--	--	--	--	--	--	--	--	--	--	--	--	--	--	--	--	--	--	--	--	--	--	--	--	--	--	--	--	--	--	--	--	--	--	--	--	--	--	--	--	--	--	--	--	--	--	--	--	--	--	--	--	--	--	--	--	--	--	--	--	--	--	--	--	--	--	--	--	--	--	--	--	--	--	--	--	--	--	--	--	--	--	--	--	--	--	--	--	--	--	--	--	--	--	--	--	--	--	--	--	--	--	--	--	--	--	--	--	--	--	--	--	--	--



SWMU IDENTIFICATION LIST:

- RF-1 AND ASSOCIATED EQUIPMENT
- RF-2 AND ASSOCIATED EQUIPMENT
- H-1 HOPPER
- H-2 HOPPER
- RECYCLE WATER TRANSFER SYSTEM
- SPENT CARBON STORAGE WAREHOUSE
- T-1, T-2, T-5, T-6 AND ANCILLARY EQUIPMENT
- T-8 AND ANCILLARY EQUIPMENT
- T-18 AND ANCILLARY EQUIPMENT
- RECYCLED WATER T-9
- T-11 WASTEWATER SYSTEM
- T-19
- HAZARDOUS WASTE DEBRIS BIN
- GRADED TRENCHES AND SUMP
- BERMED PROCESS AREA
- SUMP BY H-1
- SUMP T-9
- SUMP BY COOLING SCREW
- WASTEWATER PIPING TO WWT TANK
- LIFT STATION AND PIPING SYSTEM (OLD)
- FACILITY DISCHARGE PIPING SYSTEM
- CARBON ADSORBER
- H-1 BERMED UNLOADING PAD
- WWTP

NOTES:

- THIS DRAWING INCLUDES COMPONENTS OF THE FACILITY THAT ARE EXEMPT FROM PERMITTING UNDER VARIOUS PROVISIONS OF RCRA. DATA RELATED TO THESE COMPONENTS IS PROVIDED FOR INFORMATIONAL PURPOSES AND EASE OF REVIEW ONLY AND THEY ARE NOT INTENDED TO BECOME REGULATED COMPONENTS OF THE HAZARDOUS WASTE FACILITY.
- THIS DRAWING IS BASED ON PARKER FACILITY DRAWING 01-32-002P

NO	DATE	APP	REVISIONS	DATE
1	2/27/07	KEM	2/27/07	

SIEMENS WATER TECHNOLOGIES CORP.
2523 MUTAHAR STREET, PARKER, AZ 85344

SCALE	DWG. NO.	REV.
AS SHOWN	D14789-12	0

REACTIVATION FACILITY
SWMU LOCATION - FIGURE J-3