



Romic Environmental Technologies Corporation - Southwest

U.S. ENVIRONMENTAL PROTECTION AGENCY • REGION 9 • SAN FRANCISCO, CA • JUNE 2004

Types of Hazardous Wastes Accepted/Stored/Treated On-Site

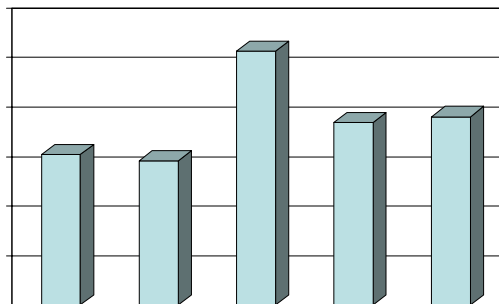
The Romic facility is located on the Gila River Indian Reservation at 6760 West Allison Road, in the Lone Butte Industrial Park just southwest of Chandler, AZ. Romic currently operates as a hazardous waste storage and treatment facility that is primarily engaged in recycling of solvents. The Environmental Protection Agency (EPA) seeks comments from the public on Romic's final permit application to continue to store and treat hazardous waste and to expand its operations.



What Kind of Hazardous Waste Does Romic Accept?

Some of the wastes accepted include:

- ☐ solvents
- ☐ waste oils
- ☐ oxidizers
- ☐ resins
- ☐ adhesives
- ☐ wastewaters
- ☐ paints
- ☐ batteries
- ☐ corrosive wastes
- ☐ metal scrap
- ☐ antifreeze
- ☐ aerosol cans
- ☐ paint thinner
- ☐ sludges
- ☐ fluorescent tubes
- ☐ freon
- ☐ debris
- ☐ laboratory chemicals

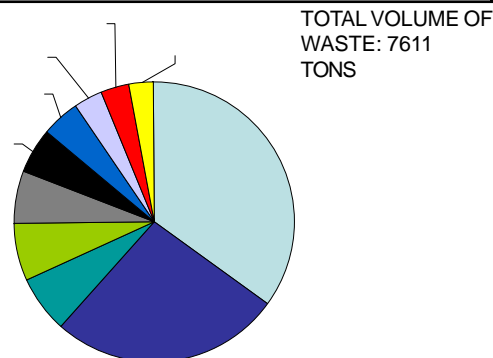


Source: Romic 2004

Waste types that Romic does not accept:

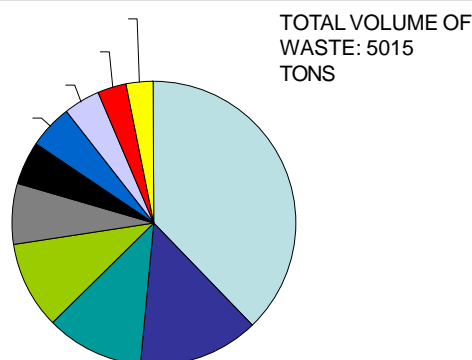
- ☐ radioactive waste
- ☐ explosives
- ☐ bio-hazards
- ☐ medical/infectious wastes
- ☐ waste containing polychlorinated biphenyl (PCB)

Top Ten Amounts of Hazardous Waste Received from Off-Site in 2003



Source: Romic 2004

Top Ten Amounts of Non-Hazardous Waste Received from Off-Site in 2003



Source: Romic 2004

CONTACT EPA:

If you have questions about Romic please contact:

Wenona Wilson

Community Involvement Coordinator

Phone: 415-972-3239

E-mail: wilson.wenona@epa.gov



Mailing Address:

Wenona Wilson (SFD-3)

U.S. EPA, Region 9

75 Hawthorne Street

San Francisco, CA 94105

or call our
toll free number:
1-800-231-3075

Hazardous Waste Types at Romic

What Contaminants are in the Waste Romic Accepts?

Most of the hazardous waste that Romic accepts contain volatile organic compounds. Volatile organic compounds are chemicals that readily evaporate at normal temperature and pressure.

Many of the wastes are also hazardous due to their flammability. Romic also accepts acids and caustics which are hazardous due to their corrosivity.

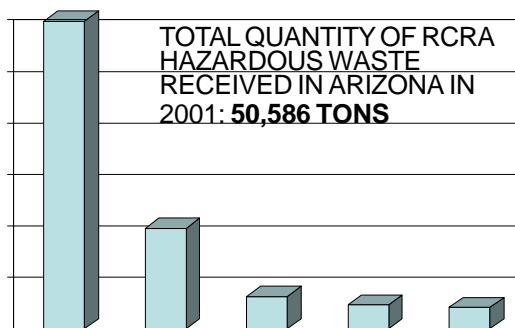
Some of Romic's wastes (such as the sludges, debris, paint, oil, and wastewater) also contain various metals such as cadmium, chromium, and lead. These wastes are hazardous due to their toxicity.

How does Romic Treat its Waste?

Romic reclaims, recycles, treats and stores hazardous waste in the following ways:

- Recycling of solvents and antifreeze
- Blending of ignitable wastes to produce fuels
- Bulking and consolidation of solid wastes for off-site shipment/treatment
- Emptying and crushing of aerosol cans and drums

Who are the Big Waste Receivers in Arizona?



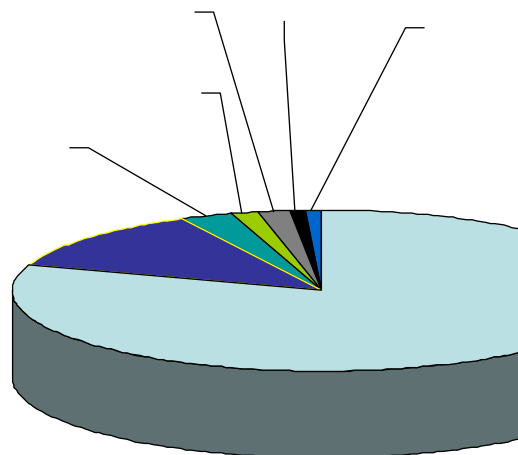
Source: U.S. EPA Biennial Waste Report 2001



Where Does Romic Get Its Waste From?

The majority of the waste that Romic receives comes from within Arizona. Romic also receives waste from across the US and from abroad. Less than 1% of the waste received in 2003 came from outside of the US. Waste from Mexico primarily comes from facilities owned by American companies which are required by the NAFTA treaty to return all wastes back to the United States.

Top Locations Romic Received Waste from in 2003



Source: Romic 2004