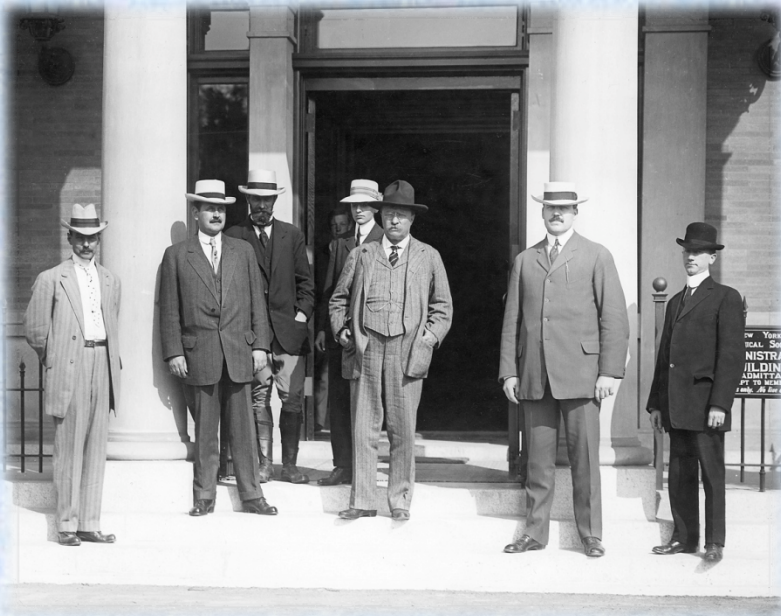


# Wildlife Conservation Society

The Wildlife Conservation Society saves wildlife and wild places worldwide. We do so through science, global conservation, education, and the management of the world's largest system of urban wildlife parks.



# WCS U.S. Economic Impact

WCS has the largest network of zoos and aquariums in the U.S. and is the fourth largest cultural institution in the New York City area

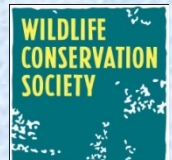
## 2010 Impacts

Visitors	4.4 million
Economic Activity	\$429 million
Jobs	2,662
Operating Expenses	\$65.7 million
Incremental Spending	\$21.7 million
Capital Spending	\$13.7 million



## National Stats

Members	87,392
Teachers Trained	15,473
Group Visits	10,032
E-supporters	444,761





# New York Government & Community Engagement

On the local level, the Wildlife Conservation Society advocates for capital and programmatic funds through its government partners annually. Traditionally, each level of government is allocated discretionary funds for programmatic and/or capital projects that impact the state, city a borough or a district (i.e. Senate district)

## **Our local government partners include:**

- Governor of New York State
- New York State Senate
- New York State Assembly
- Mayor of New York City
- Borough Presidents
- New York City Council

As a community partner it is important to establish new relationships and partnerships annually. Some examples are:

- Participation in community fairs, education summits, job fairs
- Partner with chambers of commerce and local business improvement districts on various community issues as well as special events.
  - Prevented the closing of two (2) post offices in the Bronx
- Develop community engagement opportunities
  - Community Access Program (CAP) WCS provides complimentary access to youth, special needs groups, seniors and community organizations.



# Other Supporting Governments

## U.S. Federal Agencies

Agency for International Development  
Bureau of Land Management  
Centers for Disease Control & Prevention  
Department of Agriculture  
Department of Defense  
Department of Education  
Department of Energy  
Department of the Interior  
Department of State  
Department of Transportation  
Environmental Protection Agency  
Forest Service  
Fish & Wildlife Service  
Geological Survey  
Institute of Museum and Library Services  
National Institutes of Health  
National Oceanic and Atmospheric  
Administration  
National Parks Service  
National Science Foundation  
Postal Service

## U.S. State Agencies

Alaska Department of Fish & Game  
Idaho Department of Fish & Game  
Idaho Department of Transportation  
Montana Fish, Wildlife & Parks  
New York State Department of Environmental  
Conservation  
New York State Energy Research and  
Development Authority (NYSERDA)  
New York State Office of Parks, Recreation  
and Historic Preservation  
Northeast States Research Cooperative

